

FOR LEASE

7000 Littlerock Road SW
Tumwater, WA 98512

NOW UNDER CONSTRUCTION
DELIVERY Q1/Q2 2025



7000 LITTLEROCK ROAD

Jameson Sullivan & Steve Erickson

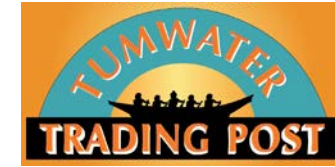
First Western Properties, Inc. | 425.822.5522
11621 97th Lane NE Kirkland, WA 98034 | fwp-inc.com

First Western Properties—Tacoma Inc. | 253.472.0404
6402 Tacoma Mall Blvd, Tacoma, WA 98409 | fwp-inc.com



7000 LITTLEROCK ROAD SW presents an exciting opportunity for businesses with a new retail building coming soon, adjacent to a brand-new fuel station. This prime location is situated in the heart of Tumwater, a rapidly growing market in the South Sound region, the property benefits from strong traffic counts and proximity to established residential and commercial areas. Don't miss the chance to be part of Tumwater's expanding economic landscape.

NOW OPEN



AVAILABLE:

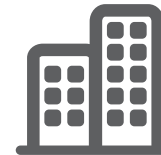
4,000 SF \$32.00 PSF PLUS NNN

NEARBY TENANTS



SUMMARY

- **Now Under Construction. Delivery Q1/Q2 2025**
- Drive Thru Available
- Located on-site with brand new fuel station
- 0.6 Miles from access to Interstate-5
- Near a new 54 acre retail development with box anchor, coming soon. Driving even more traffic to the area.



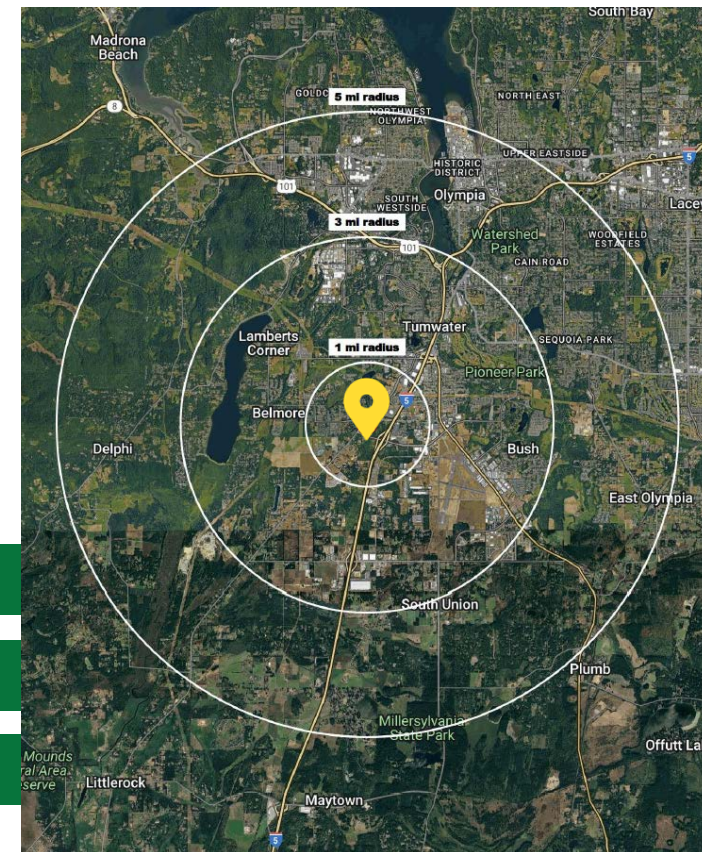
Regis - 2024

Population

Average HH Income

Daytime Population

	Population	Average HH Income	Daytime Population
Mile 1	4,687	\$126,030	4,334
Mile 3	32,270	\$126,271	27,536
Mile 5	87,835	\$120,042	81,470



SITE PHOTOS



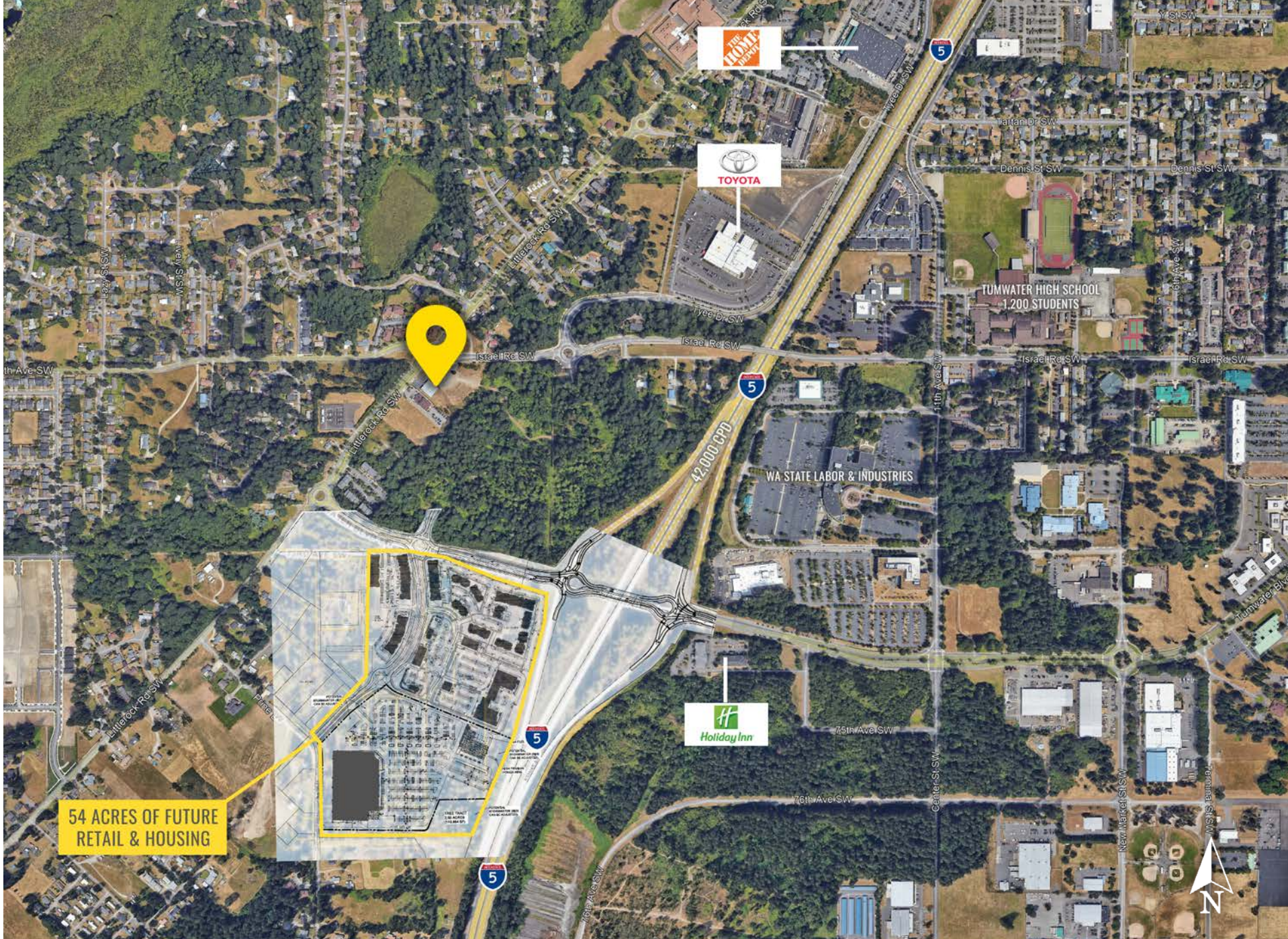
NOW UNDER CONSTRUCTION. DELIVERY Q1/Q2 2025



TUMWATER
TRADING POST

NOW OPEN!

LOCATION DETAILS



54 ACRES OF FUTURE
RETAIL & HOUSING



9,000 CPD
Littlerock Rd SW



42,000 CPD
Interstate 5

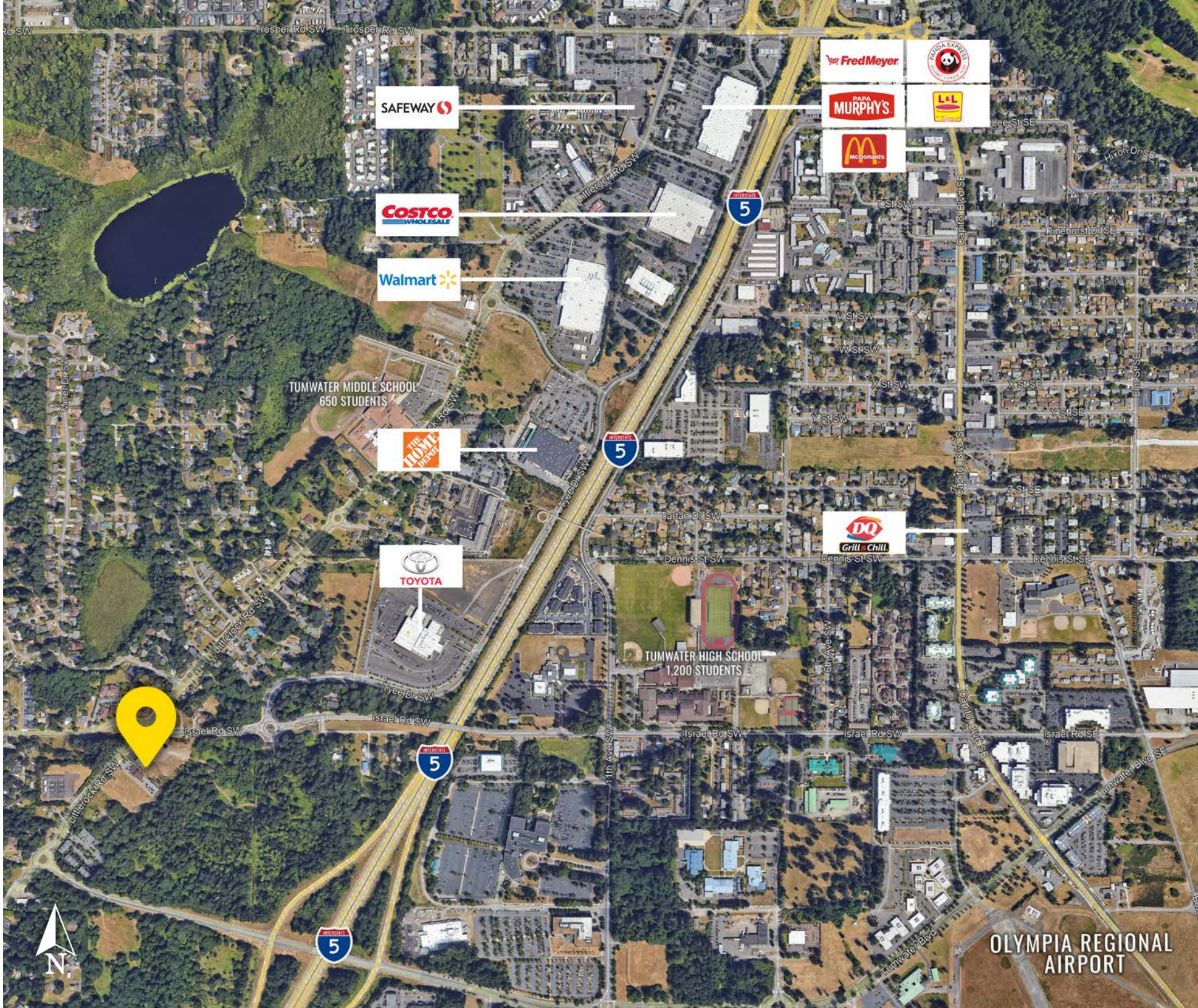


Located in the growing
Tumwater retail hub



Located moments
from I-5 access

LOCATION DETAILS



SAFeway

COSTCO WHOLESALE

Walmart

TUMWATER MIDDLE SCHOOL
650 STUDENTS

THE HOME DEPOT

TOYOTA

5

5

5

5

Fred Meyer

PAPA MURPHY'S

PAPA MURPHY'S

L&L

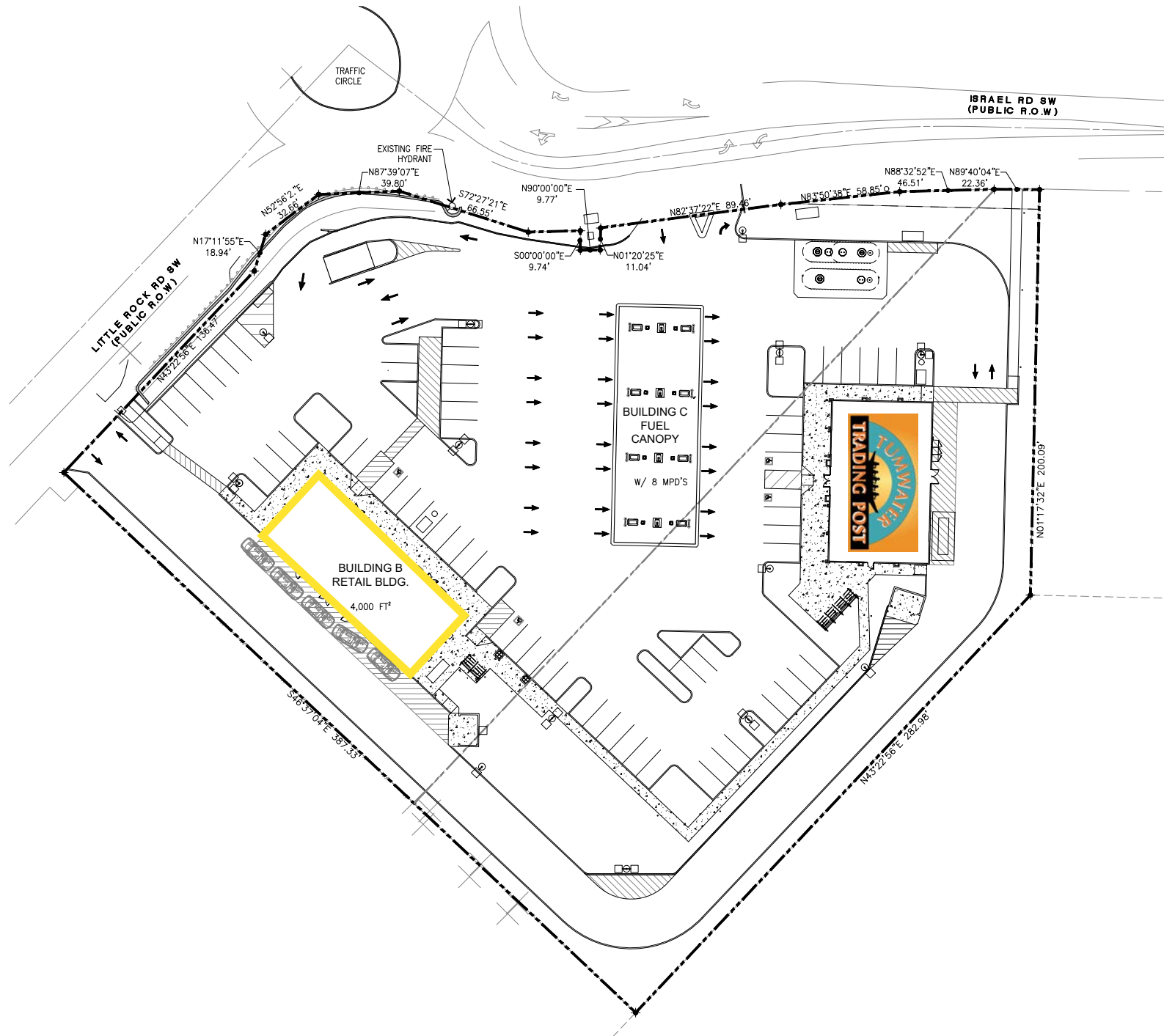
McDonald's

DQ
Grill & Chill

TUMWATER HIGH SCHOOL
1,200 STUDENTS

OLYMPIA REGIONAL AIRPORT

SITE PLAN




01 ARCHITECTURAL SITE PLAN
A0.2 SCALE: 1/32" = 1'-0"

TACOMA | KIRKLAND | PORTLAND | SEATTLE

RELATIONSHIP FOCUSED.
RESULTS DRIVEN.

JAMESON SULLIVAN

 253.471.5508

 jsullivan@firstwesternproperties.com

STEVE ERICKSON

 425.822.5522

 serickson@fwp-inc.com



First Western Properties, Inc. | 425.822.5522
11621 97th Lane NE Kirkland, WA 98034 | fwp-inc.com

First Western Properties—Tacoma Inc. | 253.472.0404
6402 Tacoma Mall Blvd, Tacoma, WA 98409 | fwp-inc.com

© First Western Properties, Inc. DISCLAIMER: The above information has been secured from sources believed to be reliable, however, no representations are made to its accuracy. Prospective tenants or buyers should consult their professional advisors and conduct their own independent investigation. Properties are subject to change in price and/or availability without notice.