

Prime Frontage Retail in Journal Square

60 Sip Avenue, Jersey City, NJ (Store #3)

Between Summit Ave / Bergen Ave

Approximately 700 Rentable Sq Feet

Asking Rent Available Upon Request

25' of Glass Frontage

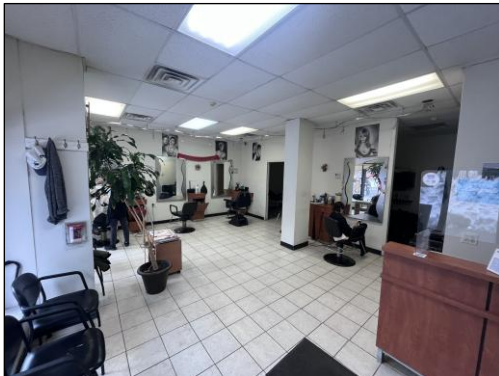
Currently a Barbershop / Salon

1 Block to Journal Square PATH Station

Adjacent to Hudson County College

Currently a barbershop / hair salon with 25' of frontage on a prime block in Journal Square. Tons of traffic on this strip and located right next to the Hudson County Community College campus, a block from Journal Sq PATH Station and surrounded by new developments. Great space with hvac, bathroom and great display windows. A prime opportunity for any retail, salon, non-vented food use in a very busy area of Journal Square. Possession available June 2026.

Neighbors include: New Jersey State Office Building / DMV • Hudson County Community College • Dunkin' CPR (Cell Phone Repair) • Chipotle • Starbucks • 7-11 • Journal Square PATH Station and new developments including: One Journal Square • The Journal • 499 Summit (2026) • 505 Summit (2026) • Journal Squared



For More Information Please Contact

Jeffrey Angel

212-719-7017

Jeffrey.angel@resnewyork.com

R·E·S

The information contained herein has been provided by sources that we deem reliable. However, no expressed or implied warranties are made as to the accuracy of the information and it should not be relied upon in any way. All information contained herein, including but not limited to square footage, zoning, uses, availability and/or all other information, should be independently verified prior to anyone entering into any form of legal binding agreement to purchase, lease or otherwise procure the premises presented herein. Information is subject to change or withdrawal without notice and may contain errors and/or omissions.