

Single Tenant Building For Lease

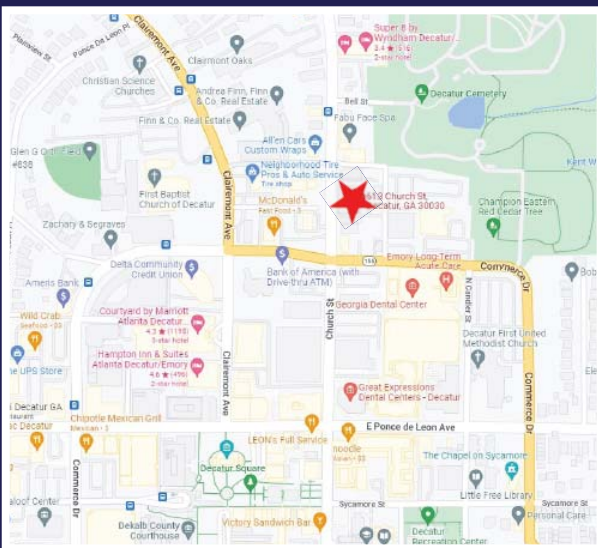
**613 Church Street
Decatur, GA 30030
(DeKalb County)**



**Space Available: 3,400sf
Lease Rate: \$25.75/sf (NNN)**

Property Details:

- Tremendous Visibility in Downtown Decatur!
- Single-Tenant, Free Standing Building
- Suitable for Office / Medical Office / Retail
- Ample, Free Parking (20 Spaces)
- 3 Blocks from Decatur Square and MARTA Rail Station
- Less than 2 Miles to Emory/Decatur Hospital
- Huge Walkable Amenity Base
- Traffic Count of 17,770 Vehicle Per Day



For more information, please contact:

Bella Clifton

(c) 678-665-6772

(o) 770-393-2006

bclifton@rg-re.com

Austin Miller

(c) 404-229-6351

(o) 770-393-2006

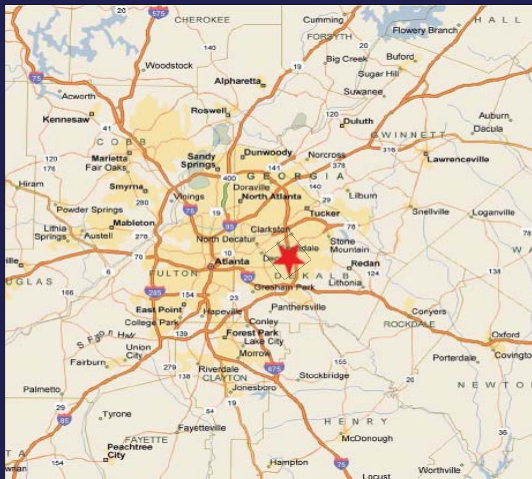
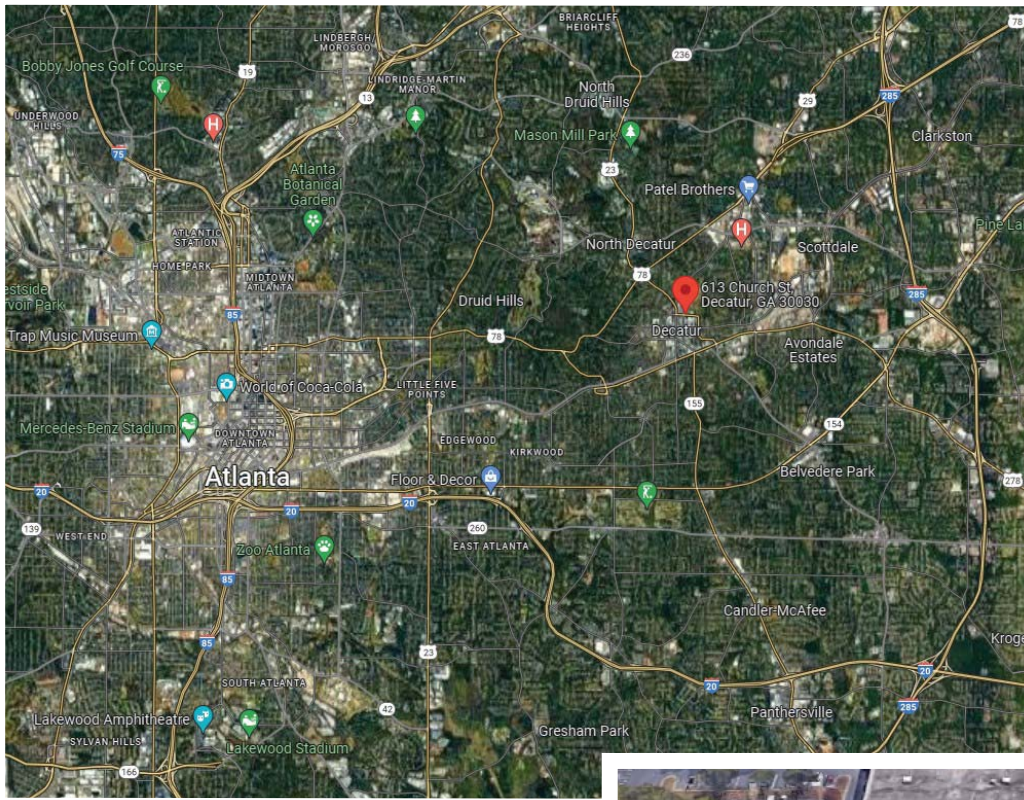
amiller@rg-re.com



1835 Savoy Drive | Suite 101 | Atlanta, GA 30341 | Work. 770-393-2006 | www.rg-re.com

(Information contained herein has been obtained from sources we deem reliable. We have no reason to doubt its accuracy, but we do not guarantee it.)

613 Church Street, Decatur



For more information, please contact:

Bella Clifton

(c) 678-665-6772

(o) 770-393-2006

bclifton@rg-re.com

Austin Miller

(c) 404-229-6351

(o) 770-393-2006

amiller@rg-re.com

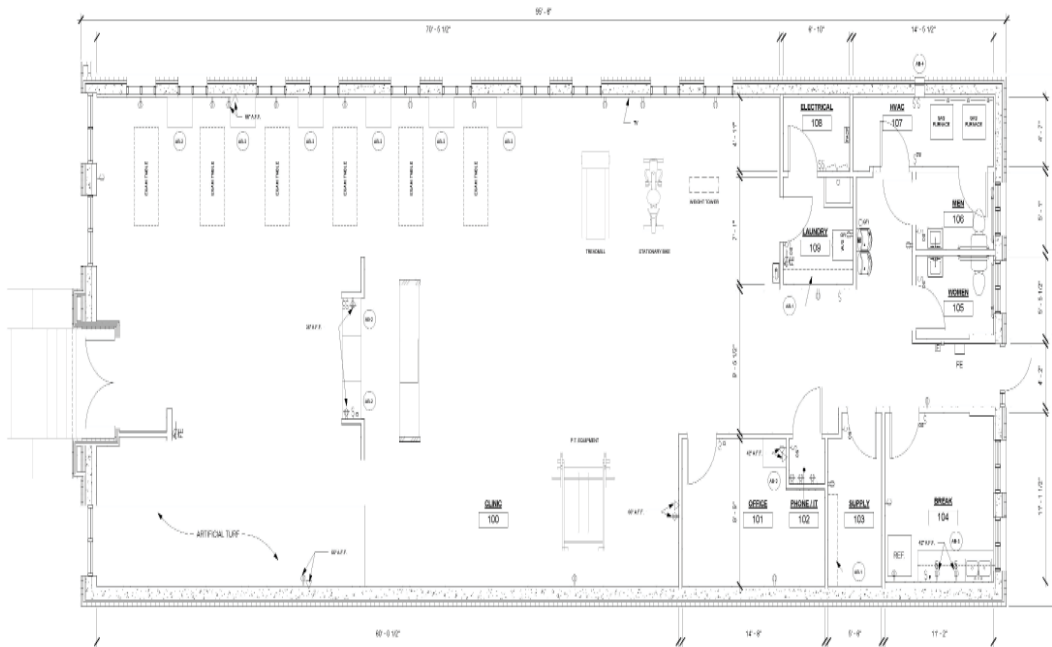


1835 Savoy Drive | Suite 101 | Atlanta, GA 30341 | Work. 770-393-2006 | www.rg-re.com

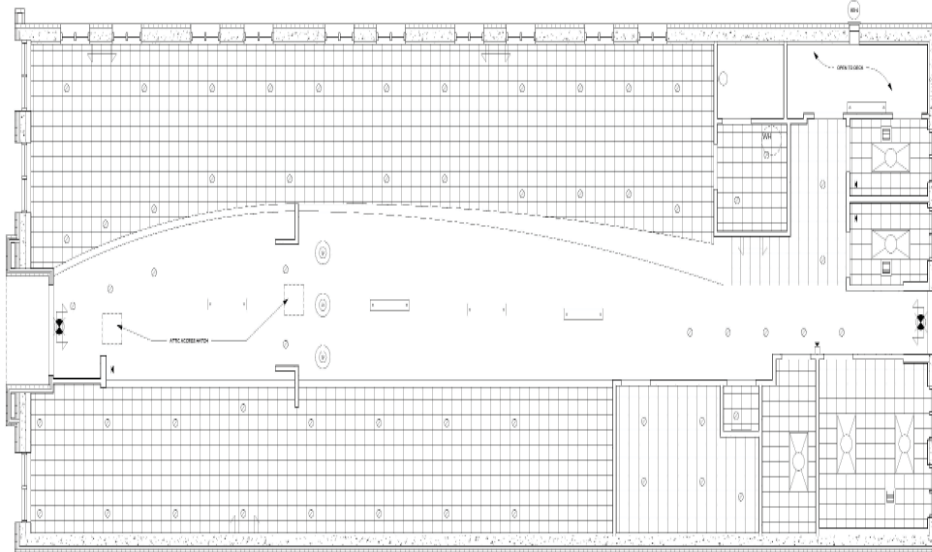
(Information contained herein has been obtained from sources we deem reliable. We have no reason to doubt its accuracy, but we do not guarantee it.)

613 Church Street

FLOOR PLAN



EXISTING CONDITIONS
1/4" = 1'-0"



AS BUILT LEGEND	
SYMBOL	DESCRIPTION
[Symbol]	EXISTING EXTERIOR PARTITION
[Symbol]	EXISTING PARTITION OR BASE BUILDING/GUILDING CORE
[Symbol]	LOW WALL/LOWER AT (D)Y A/F
[Symbol]	LOCATION OF FIRE EXTINGUISHER - 4.5 LB. (FLUSH MOUNTED AND REM-REMOVABLE CANISTER)
[Symbol]	BUILDING STANDARD 4'X4' FLUORESCENT (3 X 4 - 400H) CEILING
[Symbol]	BUILDING STANDARD DOWN LIGHT
[Symbol]	BUILDING STANDARD EXHAUST FAN
[Symbol]	WALL MOUNTED LAMP
[Symbol]	PENDANT SCENE
[Symbol]	BUILDING STANDARD 4'X2' BULB FLUORESCENT FIXTURES
[Symbol]	BUILDING STANDARD WALL MOUNTED EMERGENCY EGRESS LIGHT WITH BATTERY BACKUP
[Symbol]	BUILDING STANDARD COMBINATION EMERGENCY EXIT SIGN / EGRESS LIGHT WITH BATTERY BACKUP
[Symbol]	BUILDING STANDARD AODD / VISUAL ALARMATOR
[Symbol]	BUILDING STANDARD ELECTRICAL PANEL
[Symbol]	BUILDING STANDARD FIRE ALARM PULL STATION
[Symbol]	BUILDING STANDARD WATER HEATER MOUNTED ABOVE WOP SINK
[Symbol]	BUILDING STANDARD FIRE ALARM CONTROL PANEL
[Symbol]	LOCATION OF INTERIOR CASING
[Symbol]	BUILDING STANDARD WALL MOUNTED LOW VOLTAGE 1" BOX
[Symbol]	BUILDING STANDARD DUPLEX RECEPTACLE
[Symbol]	BUILDING STANDARD QUADREX OUTLET
[Symbol]	BUILDING STANDARD CIRCUIT BREAKER INTERRUPT DEVICE
[Symbol]	BUILDING STANDARD SINGLE POLE SWITCH
[Symbol]	BUILDING STANDARD EXHAUST FAN SWITCH
[Symbol]	BUILDING STANDARD OWNER SWITCH
[Symbol]	BUILDING STANDARD OCCUPANCY SENSOR SWITCH
[Symbol]	BUILDING STANDARD WIRE SHELVING
[Symbol]	BUILDING STANDARD BASE CABINETS AND COUNTER
[Symbol]	BUILDING STANDARD BASE CABINETS, COUNTER AND UPPER CABINETS
[Symbol]	BUILDING STANDARD WALL VENT TO EXTERIOR

For more information, please contact:

Bella Clifton

(c) 678-665-6772

(o) 770-393-2006

bclifton@rg-re.com

Austin Miller

(c) 404-229-6351

(o) 770-393-2006

amiller@rg-re.com

