

200 Hardman Avenue N South St. Paul, MN

For Sale

Real Estate & Business For Sale

Sale Price: \$8,900,000.00



For More Information, Please Contact:

Heather Mickelson

952-484-2856

heather@jhcallahan.com

George Novak

612-723-5450

george@jhcallahan.com



RESIDENTIAL • COMMERCIAL • INVESTMENT

"We never promise more than we can deliver but we deliver more than we can promise"

Parcel ID: 36-80175-01-030

85

170

WHS, BLKDST
(14450)

170

85

Card 2 of 2 Cards - [Back](#)

Code	Description	Area	Living Area
458	WHS, BLKDST	14450.00	0.00

200 Hardman Avenue N South St. Paul, MN

For Sale

Property Details

Sale Price: \$8,900,000.00

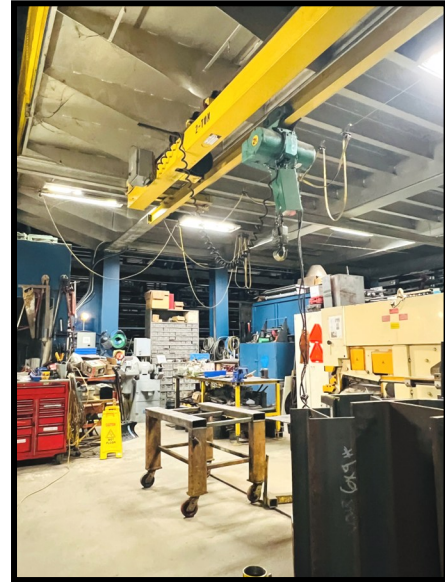
Parcel: 36 80175 01 030

Current Use: Manufacturing

Zoning: Industrial

Acres: 3.38

2025 Taxes: \$92,060.00



Real Estate & Business For Sale

Sale Price: \$8,900,000.00

*****Plus Inventory at Closing*****

The South St. Paul Steel Supply Co., Inc, (SSPSS) book of business, internal service center equipment, internal office furnishings, fixtures and operating equipment, and ISO 90001 business certification, and bridge & gantry cranes.

**Total package for the sale of real-estate, business
& equipment \$8,900,000.00**

South Saint Paul Steel Supply Co., Inc. procures, stock-holds, processes and distributes quality steel and alloy products, and procures subcontracting services that meet the expectations of our customers. When and where they need it.

200 Hardman Avenue N South St. Paul, MN

For Sale

Equipment List

OVERHEAD CRANE

2 TON P&H

SINGLE HOIST UNDERHUNG BEAM GIRDER 16'
PENDANT CONTROL
HOIST SERIAL# PN50646 HOIST MODEL
#ZIPIII

7.5 TON SCHUETTE

PENDANT CONTROL
SINGLE HOIST TOP RIDING DOUBLE BEAM GIRDER GANTRY 50' Clear Span
CRANE/HOIST SERIAL # 940

20 TON SCHUETTE

DOUBLE HOIST TOP RIDING DOUBLE BOX GIRDER 100' Clear Span
DIGITAL REMOTE CONTROL WITH EMERGENCY PENDANT BACK UP
TWO HOIST A&B 10/10 TON REULAND ELECTRIC MOTORS
CRANE/HOIST SERIAL # 90934

10 TON R&M MATERIALS HANDLING

DOUBLE HOIST TOP RIDING DOUBLE BEAM GIRDER 50' Wide Span
DIGITAL REMOTE CONTROL WITH EMERGENCY PENDANT BACK UP BRIDGE SERIAL# 10230
HOIST A 5-TON SERIAL # HGW06278
HOIST B 5-TON SERIAL # HGW06279

10 TON DEMAG

DOUBLE HOIST TOP RIDING DOUBLE BOX GIRDER 85'
DIGITAL REMOTE CONTROL WITH EMERGENCY PENDANT BACK UP
BRIDGE SERIAL# 08011
HOIST A 5-TON SERIAL # 96954448
HOIST B 5-TON SERIAL# 96954447

CHAIN SLINGS FOR CRANES

8EA 3/8" LINK 12'
2EA 1/2" LINK 16'
BUCKET OF 3/8" LINK CHAIN 250LBS

POWER EQUIPMENT

ZIEGLER/CAT 300 KWGENERATOR

DIESEL FUEL MODEL#SR4B
SERJAL # *9CR01838*

GENERATOR TRAILER

FELLING TRAILERS MODEL# FT-14

AUTOMATIC SWIRCHGEAR

ASCO SERIES 300 SERIAL #FP102320
CAT# A3003120091



200 Hardman Avenue N South St. Paul, MN

For Sale

Equipment List

FABRICATION/ EQUIPMENT/ WELDERS & TOOLING

IRONWORKER

GEKA HDRACROP 110/SD SERIAL # 17289
CAPACITY 110 TON

CLAUSING DRILL PRESS

MODEL#2287 SERIAL# 20 532935

ACCUPRESS-BRAKE PRESS

MODEL# 717514 SERIAL # 4227
BED LENGTH 14' CAPACITY 175 TON

ACCUPRESS-SHEAR

MODEL# 850012 SERIAL# 1243
CUT LENGTH 12' CAPACITY ½" CARBON STEEL

DOALL HORIZONTAL SAW

MODEL# C-260A-2 SERIAL# 483-91155
46' HEAVY DUTY IN/OUT ROLLER TABLE

DOALL VERTICAL SAW

MODEL# TF2021M SERIAL# 447-92208
49' HEAVY DUTY IN/OUT ROLLER TABLE

ELECTRIC CONVEYER SYSTEM

HYTROLCONVEYERCO
JONESBORO, AK
11 EA 8' AUTOMATED ROLLER SECTIONS

BRIDGEPORT

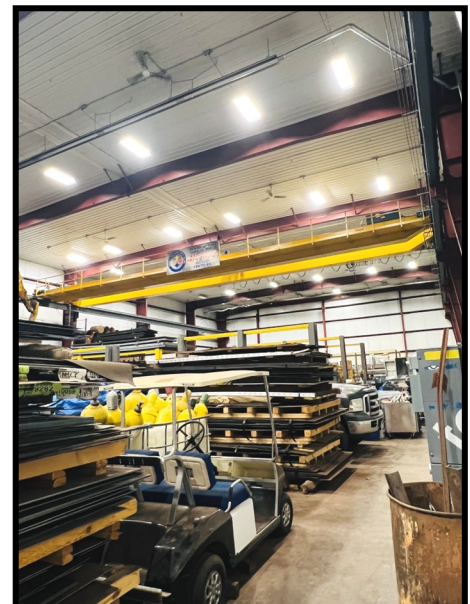
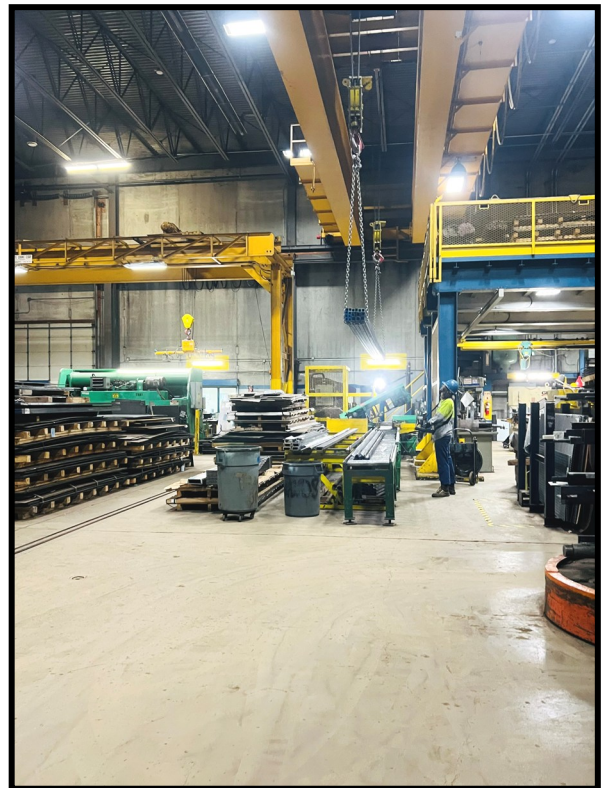
MODEL# 111141
SERIAL # 2861 R 1986

RIDGID PIPE THREADER

MODEL# 1224 SERIAL# EB21298 JOI
WITH COMPLETE TOOLING KIT 0"-4"

CINCINNATI INDUSTRIAL SHOP GRIDER

WHEEL SIZE 12" 1800RPM
TYPE 606-293 MODEL# 101
SERIAL # 250472



200 Hardman Avenue N South St. Paul, MN

For Sale

Equipment List

FABRICATION/ EQUIPMENT/ WELDERS & TOOLING

PROWELD STUD WELDER

LAGRANGE, OHIO SERIAL# 1850-119-0100

HOBART ULTRA FEED 1000

SPEC. 500233-001 SERIAL# 296WA04764

HOBART ULTRAFLEX 350

SPEC. 500237-001

SERIAL# 197PS11441

MILLER WELDER MODEL # CP-300

SERIAL# JE808141

MILLERMATIC MODEL # S-52A

SERIAL# JG125537

COBRAMATIC MODEL# M.K 3A

SERIAL # 21602F83

MILLER MAX STAR 200 SERIAL # LB062893

STOCK# 903701

AIR VAC SHEET LIFTER MODEL # E200M4-86

-2/44 SERIAL# 973287

CAPACITY 2000 LBS

LIFT TABLE MODEL# M-1170-L7

SERIAL# 73765-2

CAPACITY 24,000 LBS



AIR COMPRESSOR GARDNER-DENVER

25HP 175PSI OUTPUT MODEL # APNR-

KA SERIAL # A29651 ID#AFAAJA

THREE-300GALON AIR TANKS

AIR COMPRESSOR GARDNER-DENVER

5HP 175PSI OUTPUT MODEL# ARDRD SERIAL # A20475

GEKA TOOLING

ROUND PUNCH & DIE 7/32" THRU 1 1/4" (58 PIECES) SQUARE PUNCH

& DIE 7/8" THRU 1" (4 PIECES)

SLOTTED PUNCH & DIE 3/8" X 3/4" THRU 13/16 X 1 1/2 (26 PIECES) OFFSET PUNCHES 1/4"-1" (30 PIECES)

OFFSET DIE HOLDERS (5 PIECES)

TUBE NOTCHER (COPING DIE) 1 1/4" - 2" "V" NOTCHER

200 Hardman Avenue N South St. Paul, MN

For Sale

Equipment List

FABRICATION/ EQUIPMENT/ WELDERS & TOOLING

SLUGGER DRILL USA5

(2EA) JANCY ENGINEERING CO SERIAL # 59880 RS

MFG DATE 08-30-04

SERIAL# 052131

SLUGGER DRILL BITS

7/16" THRU 2 1/16" (45 PIECES)

TOLEDO SCALE COMPANY

MODEL# 31-1541 FC

SERIAL# 350

FACTORY# 2150-0-353-01

CAPACITY 6250 LBS

CHOP SAW

GAS HUSQVARNA SAW 12' HAND SAW

RIDGID 12" WOOD SAW WITH TABLE

2 EA SAWS/TABLES

General Equipment

YELLOW SAW HORSES

10EA 35" TALL BY 96" LONG

HARDWARE CABINETS

5EA GREY 120 DRAWER UNITS

FLAMABLE STORAGE

3EA YELLOW SAFETY CABINETS

PROTECTOSEAL 45GAL 5545

SECURAL-CABINETS NFPA CODE 30

LOCKER ROOM LOCKERS

3EA LYON 54"WIDE 19"DEEP 78"TALL

14EA REPUBLIC STORAGE SYSTEMS 12"WIDE 15"DEEP 72"TALL

LADDERS

3EA HUSKEY 8'

2EA HUSKEY 12'

SHEET PLATE LIFTERS

CAPACITY 10,000 LBS MFG BELOW HOOK LIFTERS

CAPACITY 10,000 LBS C-F LIFTERS LENGTH 10' SERIAL #8786

MFG BY BADGER EQUIPMENT

CAPACITY 10,000 LBS C-F LIFTERS SERIAL #8785

MFG BY BADGER EQUIPMENT



200 Hardman Avenue N South St. Paul, MN

For Sale

Equipment List

General Equipment

STEEL & PALLET RACKING

BLUE & GREY PALLET RACKING

24 EA UPRIGHTS DROP STYLE
110 EA DROP IN ARMS

BLUE SPACE SAVER RACKING SYSTEM MFG BY STEEL STORAGE SYSTEMS

MODEL-SPACE SAVER
5 UNITS - THREE WITH AUTOMATED ELEVATOR BASKETS CAPACITY 10000 LBS PER LOCATION
CAPACITY 190000 TOTAL PER UNIT
BLUE UPRIGHT SHEET AND PLATE RACKING MFG SSPSS
4 X 13# BEAMS USED FOR RUNNERS AND UPRIGHTS

ORANGE CANTILEVER RACKS WITH PANS BEAM BASE AND UPRIGHTS

TOTAL HEIGHT 20' BOLT-TOGETHER RACK ARMS
2 PALETS OF SPARE ARMS 50 EACH PALLET ARM CAPACITY 5000 LBS
12' PANS 64 EA
20' PANS 368 EA
24' PANS 1120 EA

GREY CANTILEVER RACKS WITH PANS

FORMED BASE AND UPRIGHTS TOTAL HEIGHT 16' DROP IN STYLE ARMS WITH
PIN.

THREE PALETS OF SPARE ARMS 50 EACH PALLET ARM CAPACITY 5000 LBS

12' PANS 24 EA
24' PANS 112 EA

BLUE SHEET/EXPANDED METAL RACKING 35 STACKABLE UNITS

5' X 12'

PIGEON HOLE RACKS 4EA MULTI SIZE STORAGE SLOTS

12' DEEP

TRUCKS & FORKLIFTS

RAYMOND SIDE LOADER MODEL# 75-SLI00TN SERJAL # 075-SLIO0TN-495 CAPACITY 5-TON TO 20'
FUEL ELECTRIC 2904HOUR

RAYMOND SIDE LOADER MODEL# 76-SLIO0TN SERJAL # 076-91-00473 CAPACITY 5-TON TO 20'
FUEL ELECTRJC 2079HOUR

RAYMOND MAN LIFT MODEL# 152-OPC30TT SERIAL# 152-89-02308 CAPACITY 1.5-TON UP TO 204"
FUEL ELECTRJC

TCM FORKLIFT CAPACITY 6000LBS MAX FORK HEIGHT 1181N MODEL# FG30NG SERJAL # 3360179
FUEL PROPANE

RAYMOND SIDE LOADER MODEL# 940-SLI00TN SERIAL# 940-11'-00106 CAPACITY 5-TON TO 20'
FUEL ELECTRIC 2,250 HOUR

RAYMOND SIDE LOADER MODEL# 940-SLI00TN SERIAL# 940-11'-00107 CAPACITY 5-TON TO 20'
FUEL ELECTRIC 2,170 HOUR

200 Hardman Avenue N South St. Paul, MN

For Sale

