

# 2620 NORTH MILWAUKEE AVENUE

logan square / chicago, il

AVAILABLE IMMEDIATELY



\*CONCEPTUAL RENDERING



MID-AMERICA® URBAN

# 2620 NORTH MILWAUKEE AVENUE

logan square / chicago, il

## ADDRESS

2620 N. Milwaukee Avenue  
Chicago, Illinois 60647

## AVAILABILITY

1,968 SF Ground Floor Space with  
Full Lower Level for Storage

## DEMOGRAPHICS

	1 Miles	1.5 Miles	2 Miles
POPULATION	72,358	137,197	238,179
HOUSEHOLDS	31,105	57,586	97,031
AVG HOUSEHOLD INCOME	\$109,890	\$115,149	\$123,772
DAYTIME POPULATION	49,171	104,915	184,695

## NEIGHBORING RETAILERS



sweetgreen



BILLY SUNDAY



## FEATURES

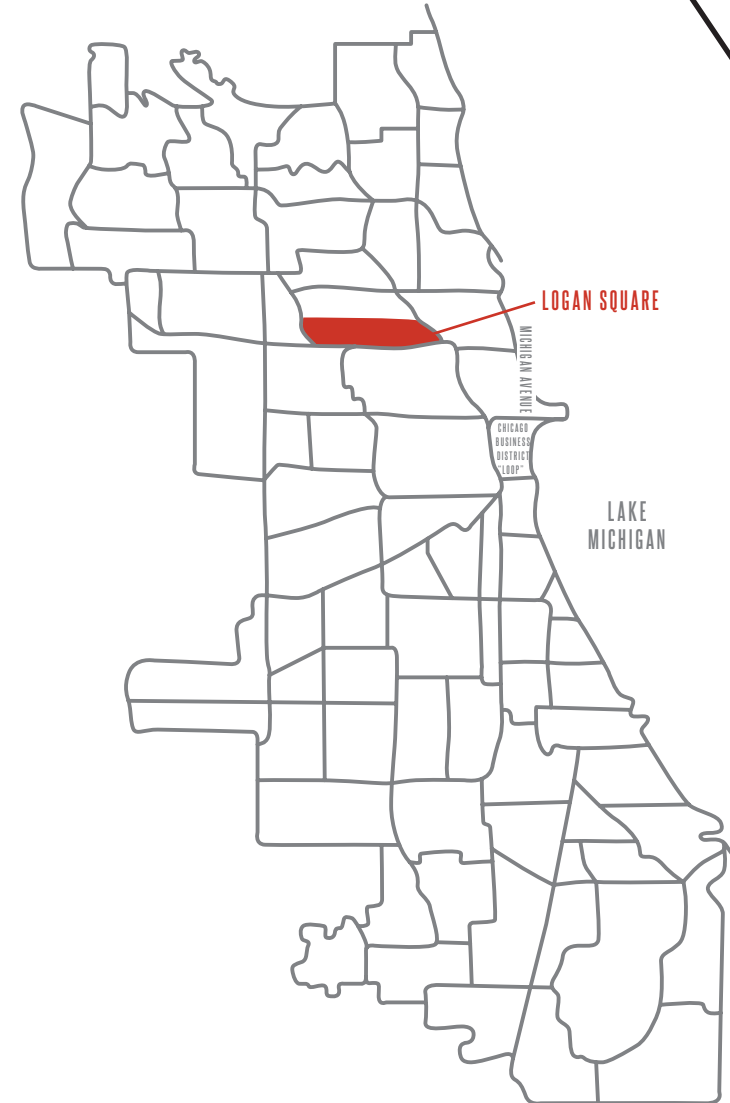
Jewel box opportunity immediately adjacent to proposed Logan Square Chicago Athletic Club (Grace's Furniture Building Redevelopment)

Landlord to renovate building, and replace storefront/repair façade

Across the street from the CTA Blue Line Logan Square Station with 2M riders annually

Ideal for a cocktail bar or small café/restaurant

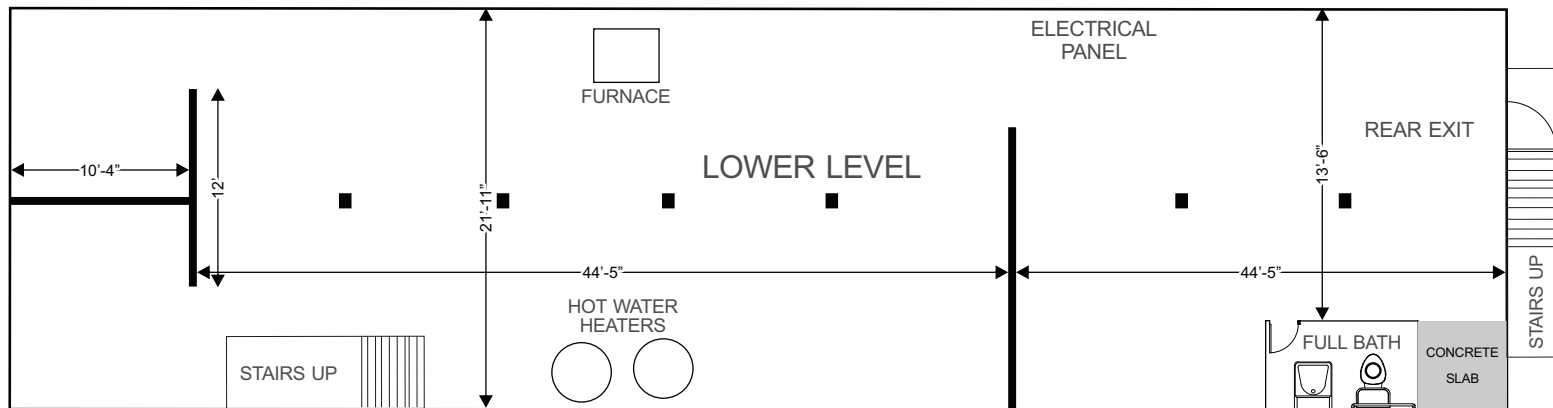
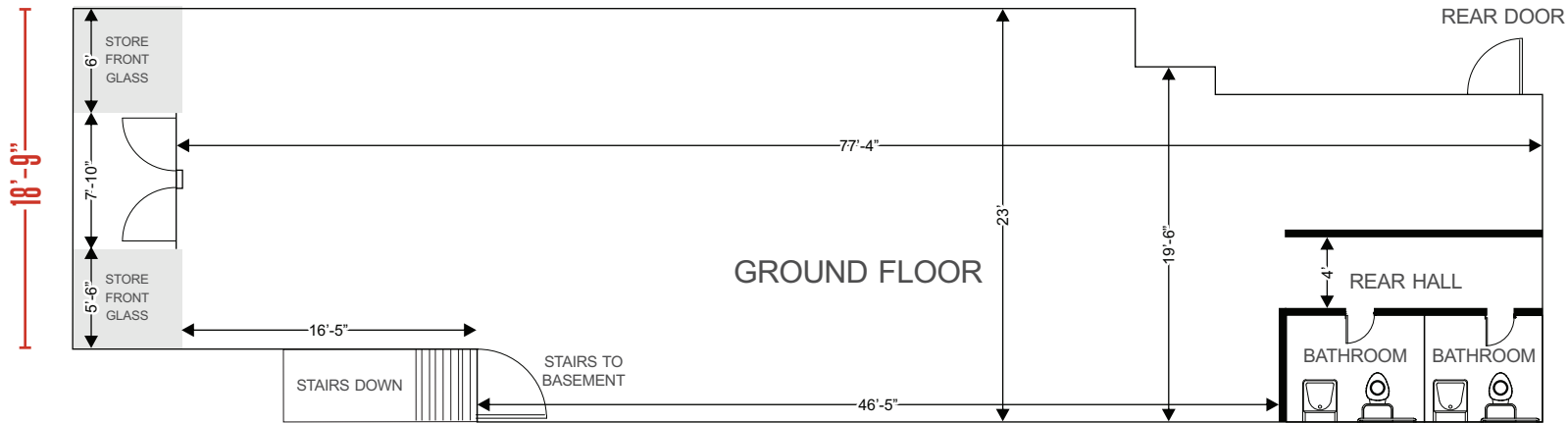
## SPACE DETAILS



# 2620 NORTH MILWAUKEE AVENUE

logan square / chicago, il

## FLOOR PLANS



## SPACE DETAILS

1,968 SF Ground Floor Space with Full Lower Level for Storage



# 2620 NORTH MILWAUKEE AVENUE

logan square / chicago, il

TRADE AREA MAP



let's  
talk. **BIG**  
**IDEAS?**

**PAUL BRYANT**

Mid-America Real Estate Corporation

630.954.7354

PBryant@MidAmericaGrp.com

**KELLY NICKELE**

Mid-America Real Estate Corporation

630.954.7513

KNickele@MidAmericaGrp.com



**MID-AMERICA<sup>®</sup> URBAN**