

SEA CLIFF, NY**FOR SALE****208, 212, 216 Sea Cliff Ave. & 39 Roslyn Ave.****RARE INVESTMENT/REDEVELOPMENT OPPORTUNITY****LOCATED IN THE HEART OF THE QUAIN &
CHARMING DOWNTOWN AREA****PROPERTY HIGHLIGHTS**

- Tenants include: a 'farm-to-table' restaurant, a retail emporium, a dental office and a craft beer market.
- Excellent exposure with over 180' frontage on Sea Cliff Avenue
 - Lot 1: .13 acres + Lot 2: .34 acres = Total .47 acres
 - Zoning: Business A

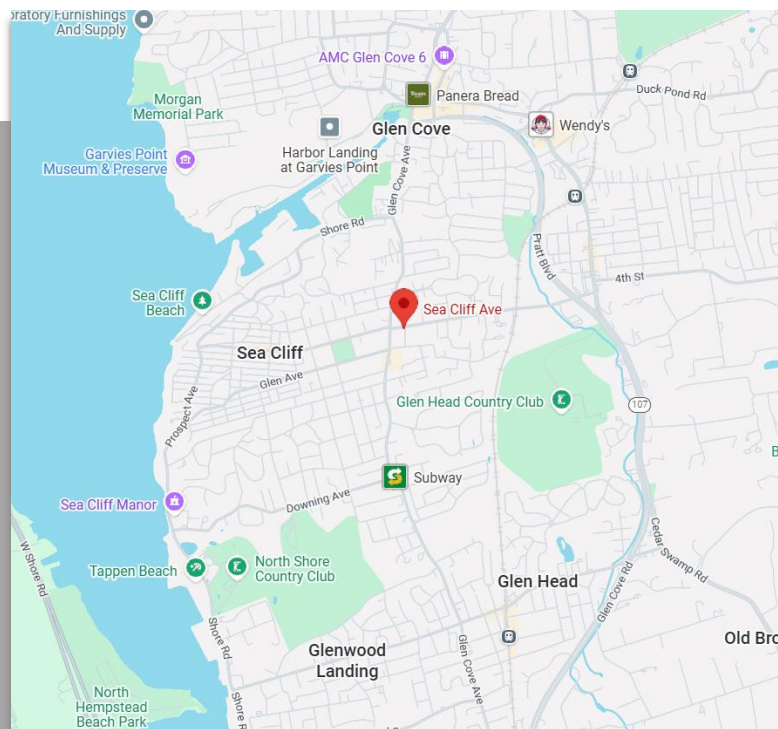
For pricing, further information or to arrange an inspection, please call:**Gerry Krush**

Managing Director

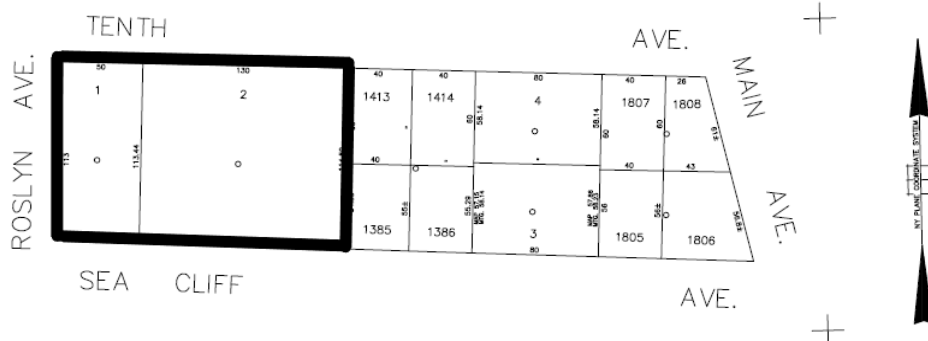
516-942-8319 (office) 516-768-7511 (cell)

gkrush@resltd.com500 North Broadway • Suite 165 • Jericho • New York 11753 • 516.942.8300 • 516.942.8311 • www.resltd.com

All information furnished regarding either property for sale, rental or the financing is from sources deemed reliable. No representation is made as to the accuracy thereof and submitted subject to errors, change of price, rental rates or other conditions, prior sale, lease or financing, or withdrawal without notice. All areas and dimensions are approximate.



Locator Map





39 Roslyn Ave: Restaurant/Outdoor Dining



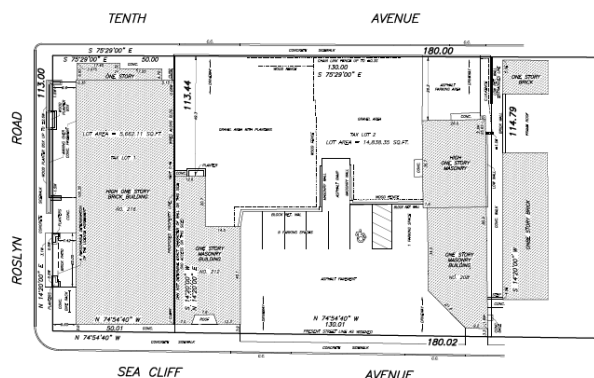
212 Sea Cliff Ave: Retail Emporium
216 Sea Cliff Ave: Dental office

500 North Broadway ▪ Suite 165 ▪ Jericho ▪ New York 11753 ▪ 516.942.8300 ▪ 516.942.8311 ▪ www.resltd.com

All information furnished regarding either property for sale, rental or the financing is from sources deemed reliable. No representation is made as to the accuracy thereof and submitted subject to errors, change of price, rental rates or other conditions, prior sale, lease or financing, or withdrawal without notice. All areas and dimensions are approximate.



208 Sea Cliff Ave: Craft Beer Market and Parking



Property Survey: Lots 1 & 2

500 North Broadway ▪ Suite 165 ▪ Jericho ▪ New York 11753 ▪ 516.942.8300 ▪ 516.942.8311 ▪ www.resltd.com

All information furnished regarding either property for sale, rental or the financing is from sources deemed reliable. No representation is made as to the accuracy thereof and submitted subject to errors, change of price, rental rates or other conditions, prior sale, lease or financing, or withdrawal without notice. All areas and dimensions are approximate.