

FOR LEASE

2101 MISSION STREET

+/- 5,000 – 35,000 Square Feet
Office Space & PDR / R&D Space

TCP
TOUCHSTONE
COMMERCIAL PARTNERS

Corp. Lic. 01112906
www.tcp.com
www.zm-tcp.com



**FOUR
CORNERS**
properties

PROPERTY SUMMARY

2101 MISSION STREET

ADDRESS

2101 Mission Street, San Francisco CA 94110

AVAILABLE SPACE

Second Floor +/- 8,000 - 23,000 Square Feet

Ground Floor +/- 5,000 - 12,000 Square Feet

TOTAL +/- 5,000 - 35,000 Square Feet

AVAILABLE

Immediately

- + Office Space* & PDR / R&D Space
- + Property Sits on BART Line
- + On-Site Parking Available
- + Tenant Improvement Allowance Available
- + Institutional Quality Ownership and Management
- + New Coffee Shop on Site
- + Popular Gym on Site Offering Daily Fitness Classes
- + Highly Visible Corner at 17th and Mission
- + Premier Mission Location Near Many Amenities

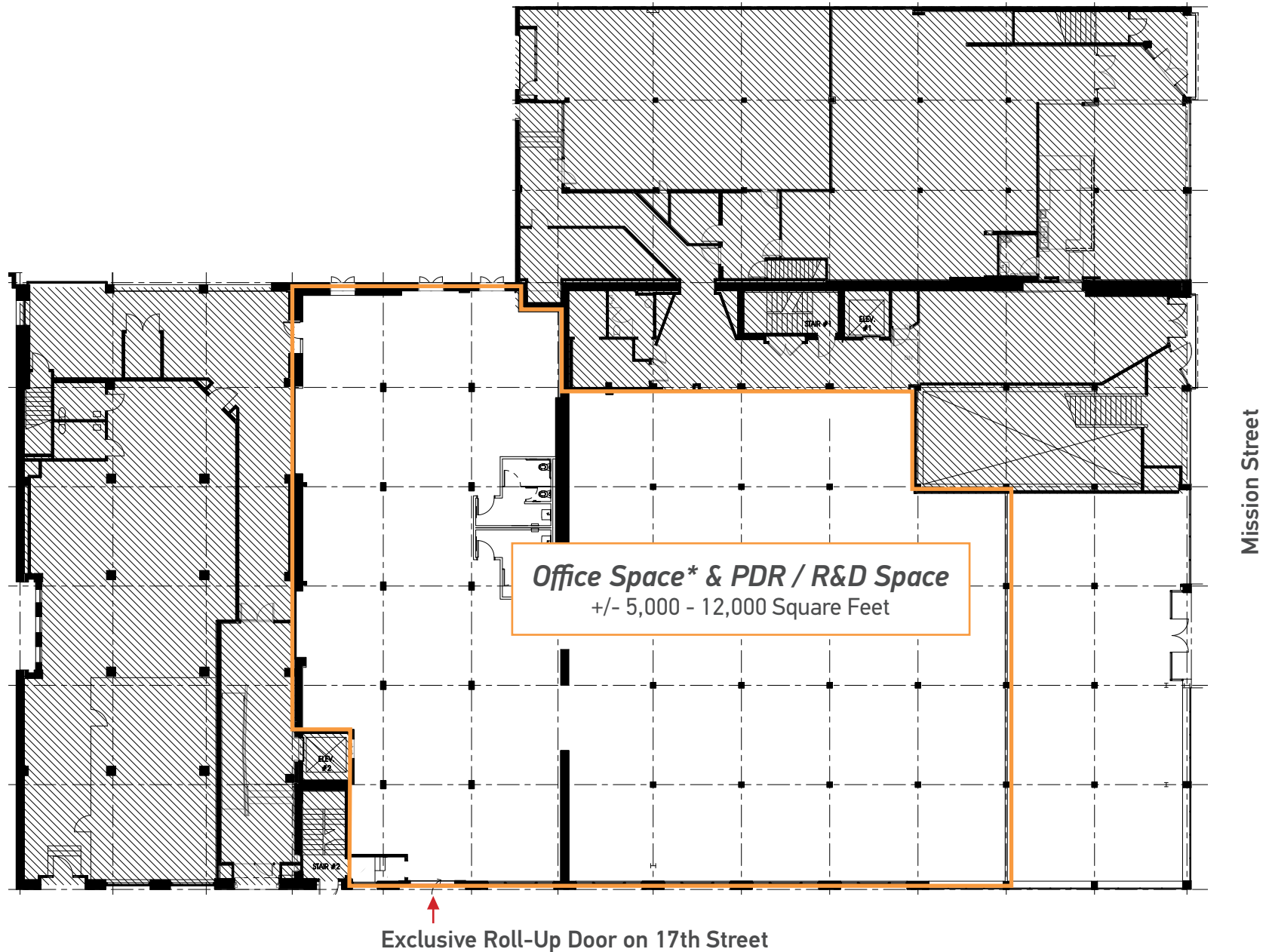
*Office is Mission Street NCT Zoning

TOUCHSTONE COMMERCIAL PARTNERS, INC.
www.tcpre.com // www.zm-tcpre.com

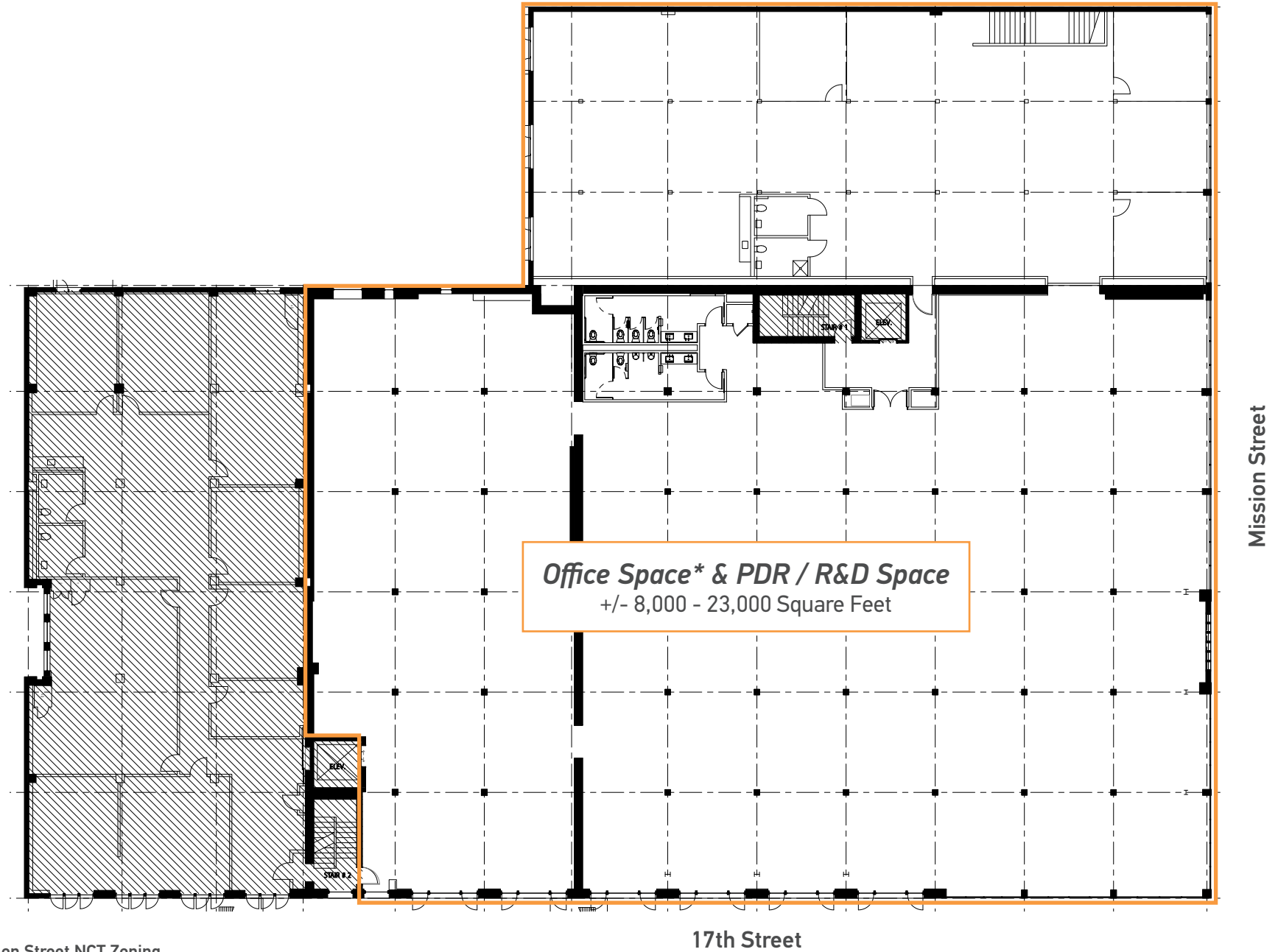
- + Office Space* & PDR / R&D
- + +/- 5,000 - 35,000 Square Feet
- + New Spec Work Underway, Including Restrooms & Lighting
- + Parking Available
- + Dock High Loading / Drive-In Access
- + Brick and Timber Building
- + Seismically Retrofitted
- + Tenant Improvement Allowance Available



*Office is Mission Street NCT Zoning

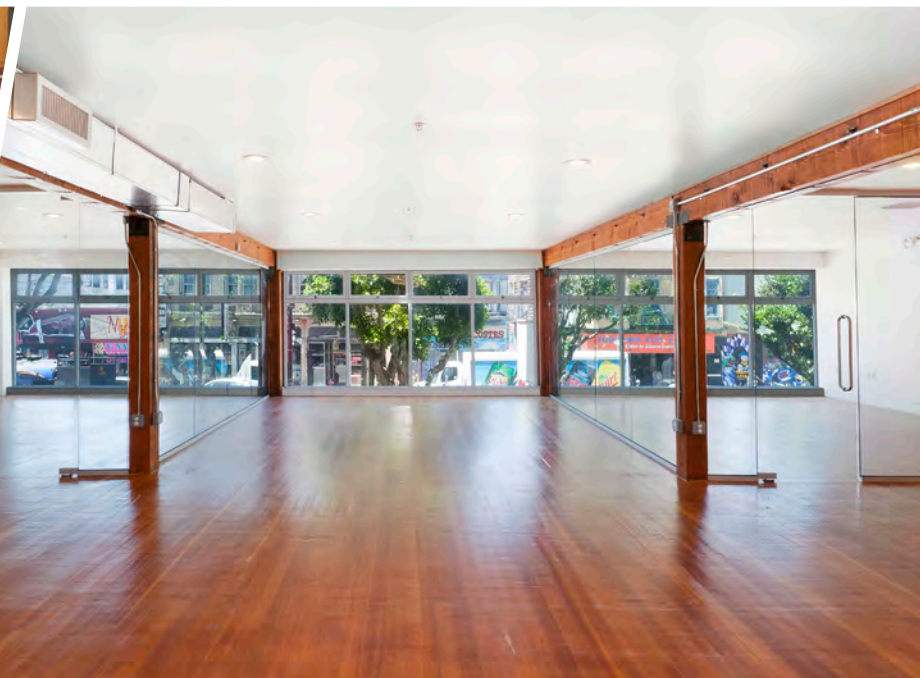
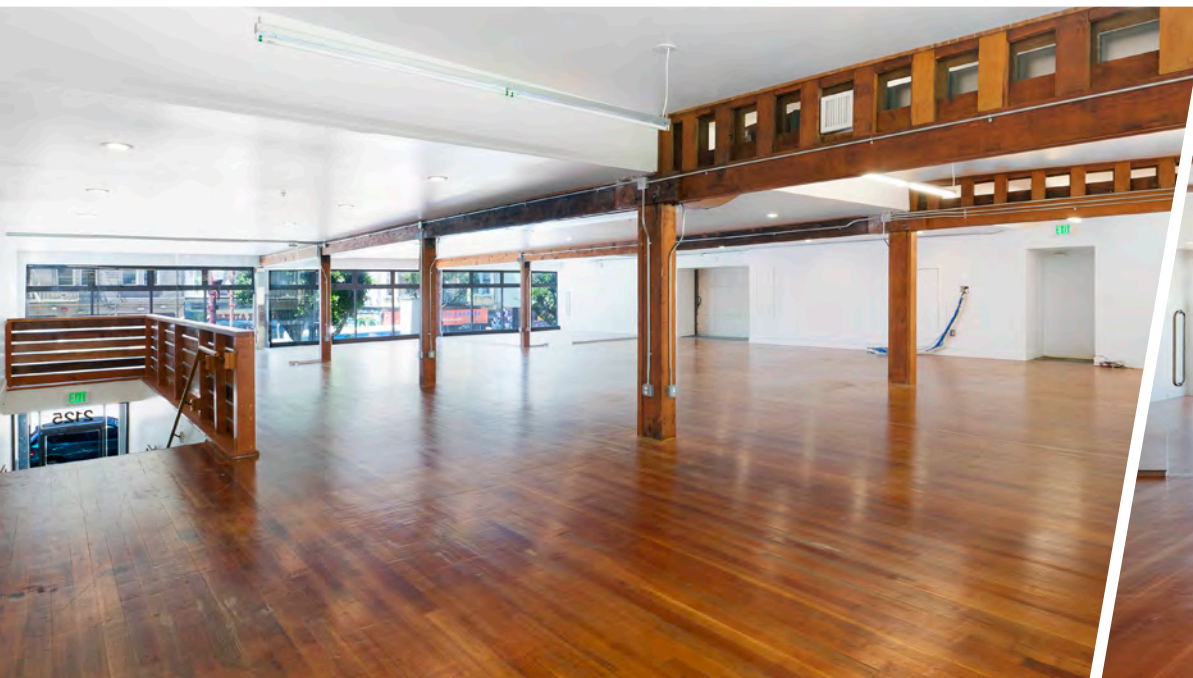


*Office is Mission Street NCT Zoning



*Office is Mission Street NCT Zoning







OTHER AMENITIES WITHIN WALKING DISTANCE

- | | |
|---------------------------|---------------------------|
| GRACIAS MADRE (2 min) | EL TECHO (10 Min) |
| ALBA RAY'S (3 min) | ALAMO DRAFTHOUSE (10 min) |
| TACOLICIOUS (6 min) | URBAN PUTT (11 min) |
| TARTINE BAKERY (8 min) | DOLORES PARK (11 min) |
| SOUTHERN PACIFIC (10 Min) | RITUAL COFFEE (11 min) |

MARSHALL ELEMENTARY

WALGREENS

16TH & VALENCIA AMENITIES

- WELLS FARGO
- BOND BAR
- LOVE STORY YOGA
- CASANOVA LOUNGE
- THE LITTLE CHIHUAHUA
- KILOWAT
- ABV
- THE MONK'S KETTLE
- LEERS ROS
- LIMON ROTISSERIE

16TH & HOFF GARAGE

YOGA TO THE PEOPLE

THE SANDWICH PLACE



GUS'S COMMUNITY MARKET

RITE SPOT CAFE

17TH & FOLSOM
PARKING LOT

MISSION BOWLING CLUB

STABLE CAFE
ODC THEATRE

17TH STREET

MISSION STREET

ZACH HAUPERT

direct (415) 539-1121 // cell (415) 812-1219
zhaupert@tcpre.com // BRE # 01822907

MICHAEL SANBERG

direct (415) 539-1103 // cell (415) 697-6088
msanberg@tcpre.com // BRE # 01930041

TREVOR GUDIM

direct (415) 539-1122 // cell (858) 922-2632
trevor@tcpre.com // BRE # 01979980



Corp. Lic. 01112906
www.tcpre.com
www.zm-tcpre.com