

Multi-Use Flex Space For Lease

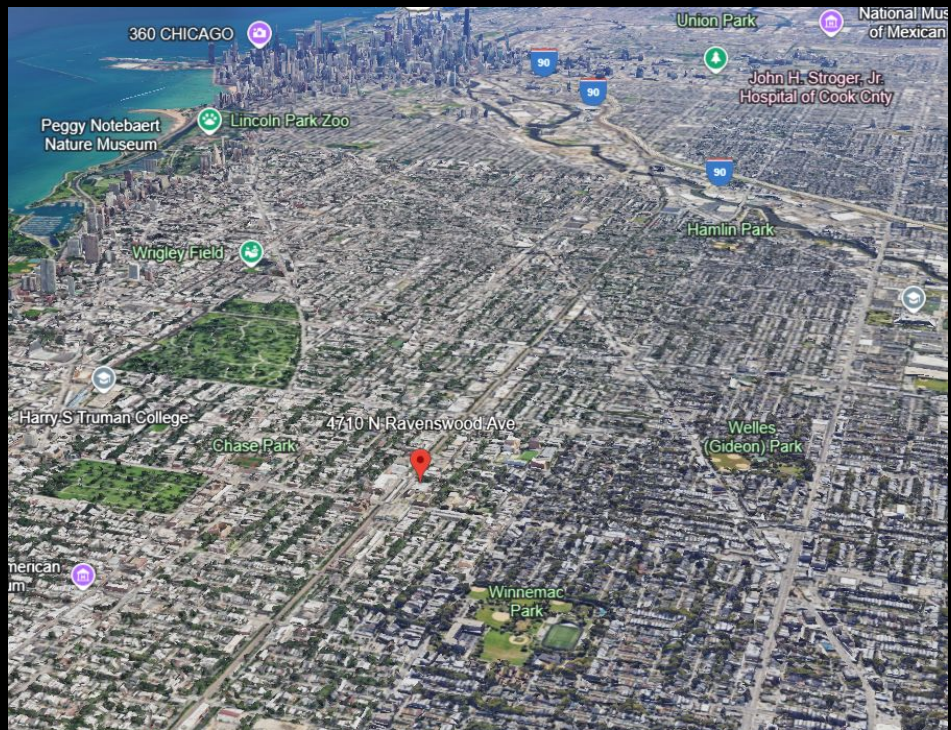
847.409.4900

coordinate
properties

4710 N Ravenswood Ave. Chicago, IL



info@coordinateproperties.com



- 6,300 Sqft
- C Zoning
- Desirable Ravenswood neighborhood on Chicago's North Side
- Across the street from Ravenswood Metra station
- Close proximity to the Damen CTA Brown Line station
- Central HVAC system
- Quiet yet highly visible street

847.409.4900

4710 N Ravenswood Ave, Chicago, IL

info@coordinateproperties.com

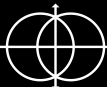
Notable Neighbors



847.409.4900

4710 N Ravenswood Ave, Chicago, IL

info@coordinateproperties.com



01.

Facilities

- Soaring ceilings
 - 12 ft at lowest and 20+ ft at highest



847.409.4900

4710 N Ravenswood Ave, Chicago, IL

info@coordinateproperties.com



02.

Facilities

- Flooded with natural light coming from storefront windows and multiple original skylights



847.409.4900

4710 N Ravenswood Ave, Chicago, IL

info@coordinateproperties.com



03.

Facilities

- Built out locker rooms with steam rooms and showers
- Laundry hookups



847.409.4900

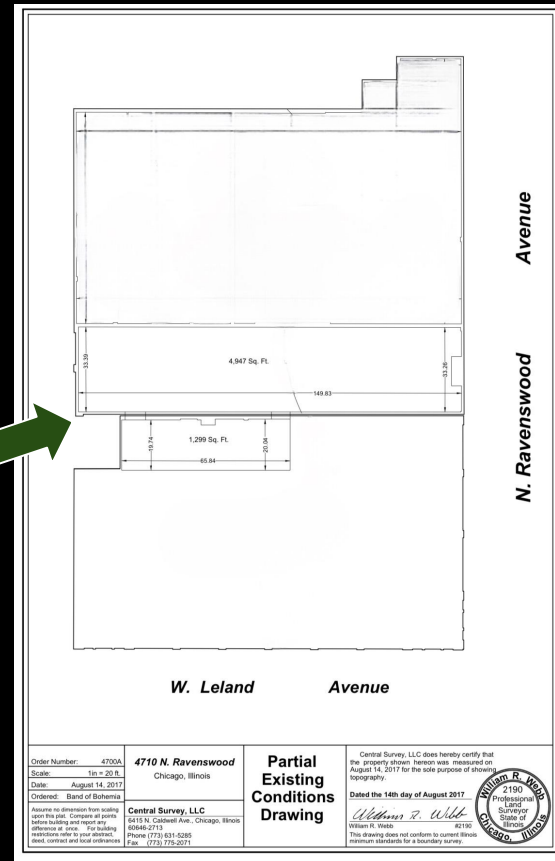
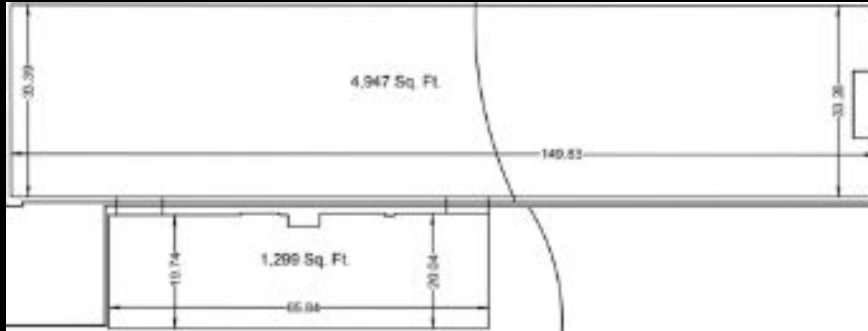
4710 N Ravenswood Ave, Chicago, IL

info@coordinateproperties.com



04.

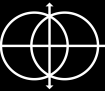
Floor Plan



847.409.4900

4710 N Ravenswood Ave, Chicago, IL

info@coordinateproperties.com



Coordinate Properties

“GET ON THE GRID”



Who we are?

We are a commercial real estate brokerage based in Chicago holding a deep understanding of trends within the local market, embracing growth at every step.



What we do?

Uphold a dedication to client service and market expertise for all real estate needs.



Amanda Stamelos
Managing Broker
amanda@coordinateproperties.com

847.409.4900

815 W Armitage Ave, Chicago, IL

info@coordinateproperties.com
