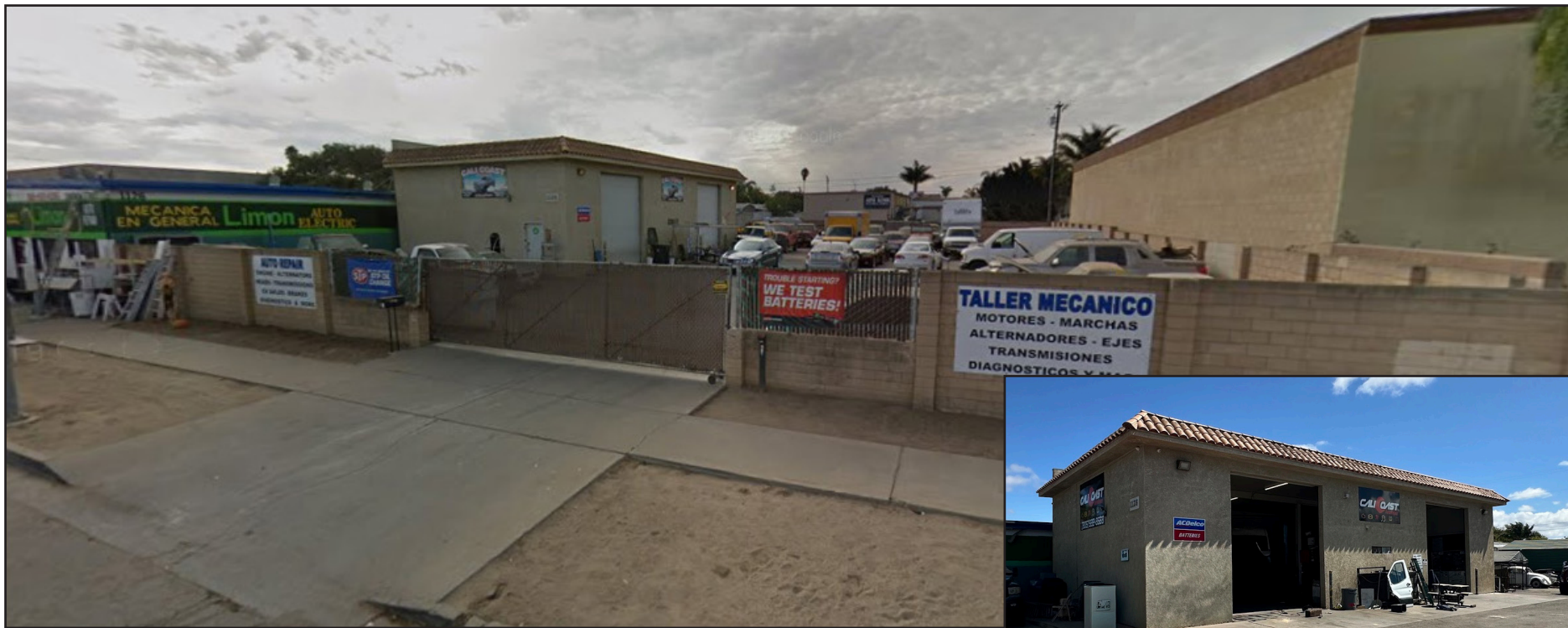


FOR SALE Industrial Building | +/-1,800 SF Plus Fenced Yard



1128 W. Church | Santa Maria, CA

Industrial Building with fenced yard area in the CM zone located near the intersection of West Main St. and South Blosser Rd. The +/-60' x 30' building includes two 12' x 14' roll-up doors and a restroom.

Building is leased by an auto repair tenant through May 31, 2026. **Business is not for sale. Please do not disturb tenant.**

Mike Kelly

805.928.2800 ext. 113

Mike@PacificaCRE.com

Lic #01800988

Jerry Schmidt

805.928.2800 ext. 107

Jerry@PacificaCRE.com

Lic #00956042

Pat Palangi

805.928.2800 ext. 105

Pat@PacificaCRE.com

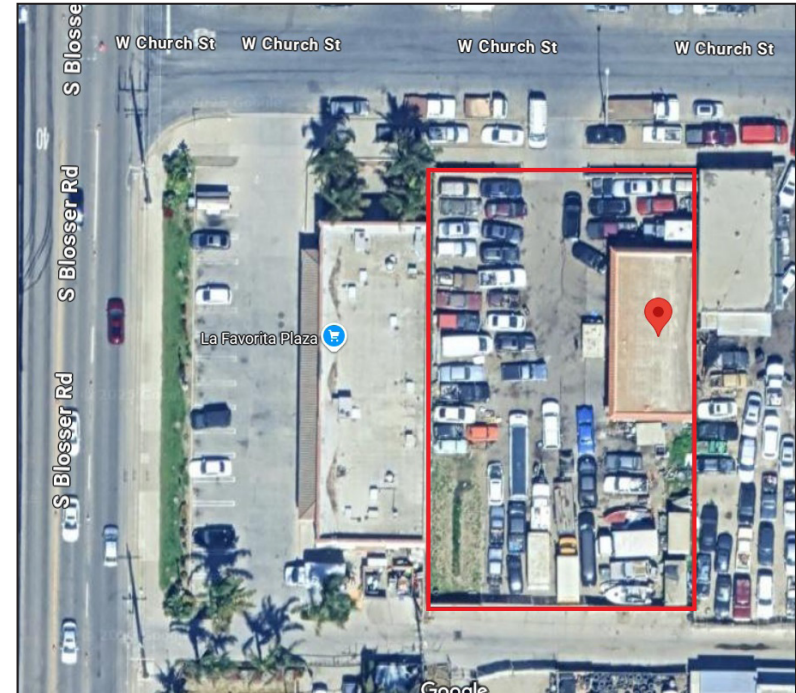
Lic #01105680



PO Box 250 | Santa Maria, CA 93456 | PacificaCommercialRealty.com

Information contained herein has been obtained from the owner of the property or from other sources deemed reliable. We have no reason to doubt its accuracy, but we do not guarantee it.

FOR SALE 1128 W. Church | Santa Maria, CA



Sale & Property Details

- Price: \$875,000
- Square Footage: +/-1,800sf
- Parcel Size: +/-17,000sf
- Zoning: Commercial Manufacturing (CM)
- Year Built: +/-1996
- APN: 123-012-022



PO Box 250 | Santa Maria, CA 93456 | PacificaCommercialRealty.com

Information contained herein has been obtained from the owner of the property or from other sources deemed reliable. We have no reason to doubt its accuracy, but we do not guarantee it.