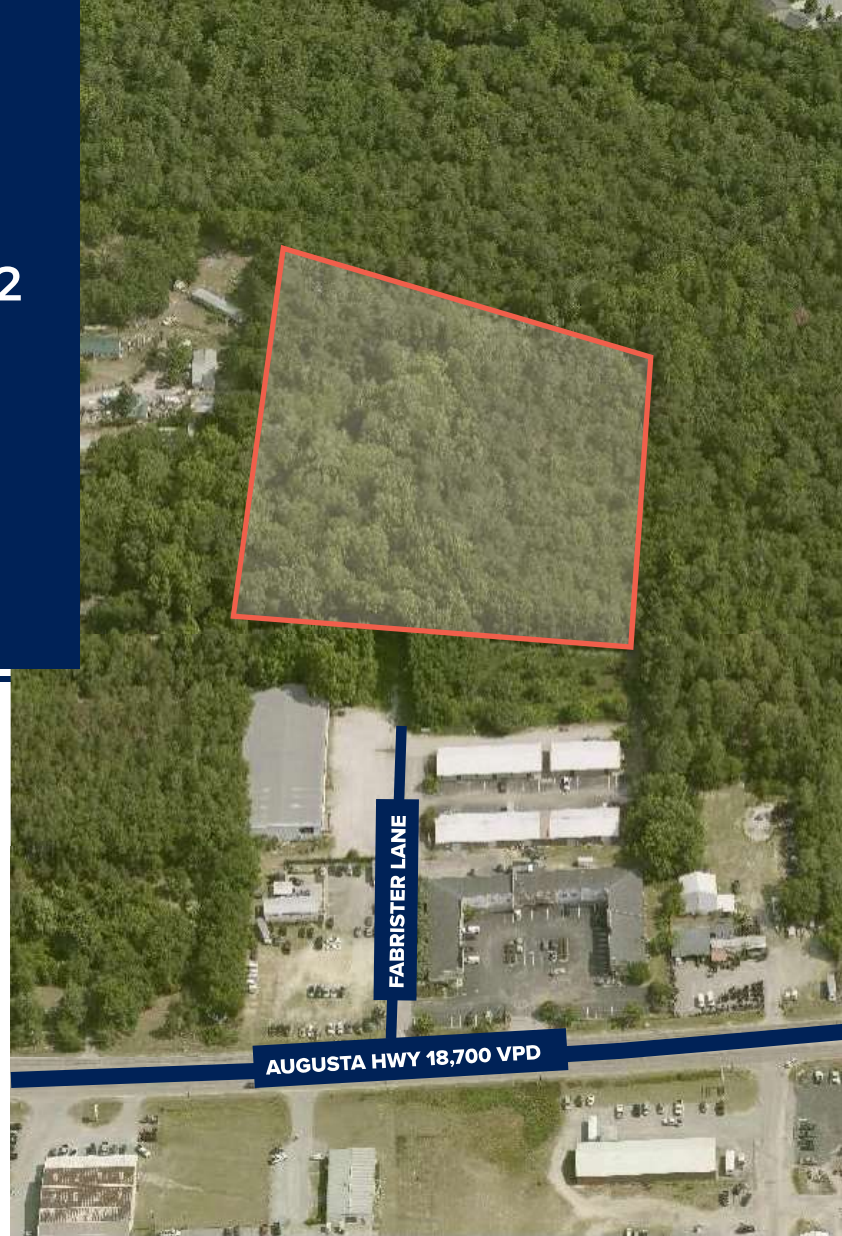


FOR SALE

**FABRISTER LANE
LEXINGTON, SC 29072**

±6.74 AC PARCEL FOR SALE ALONG
AUGUSTA HWY IN LEXINGTON

SALE PRICE: \$225,000



ASSET SUMMARY

ADDRESS	Fabrister Lane
CITY, STATE	Lexington, South Carolina
COUNTY / ZIP	Lexington / 29072
CURRENT USE	Unimproved Property

ZONING	ID (Intensive Development)
SITE SIZE (AC)	6.74
PARCEL NO.	004200-03-262
WATER	Available on Site
SEWER	Available on Site

FOR MORE INFO, CONTACT

Roger Winn, SIOR
rwinn@trinity-partners.com
803.567.1455

Braden Shockley
bshockley@trinity-partners.com
803.567.1373

Will McGregor
wmcgregor@trinity-partners.com
803.567.1912





EASY ACCESS

Situated in a great location for industrial development, future users will enjoy direct access to Augusta Highway and proximity to downtown Lexington. This parcel is located roughly 3.6 miles from I-20 Exit 55A.

SURROUNDED BY AMENITIES

The surrounding area of Fabrister Lane in Lexington, South Carolina offers an abundance of amenities. This parcel is situated directly between Lexington High School and downtown Lexington. In addition to the highly trafficked Augusta Highway, the area features various nearby amenities from shopping to dining and entertainment.

FOR MORE INFO, CONTACT

Roger Winn, SIOR

rwinn@trinity-partners.com
803.567.1455

Braden Shockley

bshockley@trinity-partners.com
803.567.1373

Will McGregor

wmcgregor@trinity-partners.com
803.567.1912

**TRINITY
PARTNERS**