

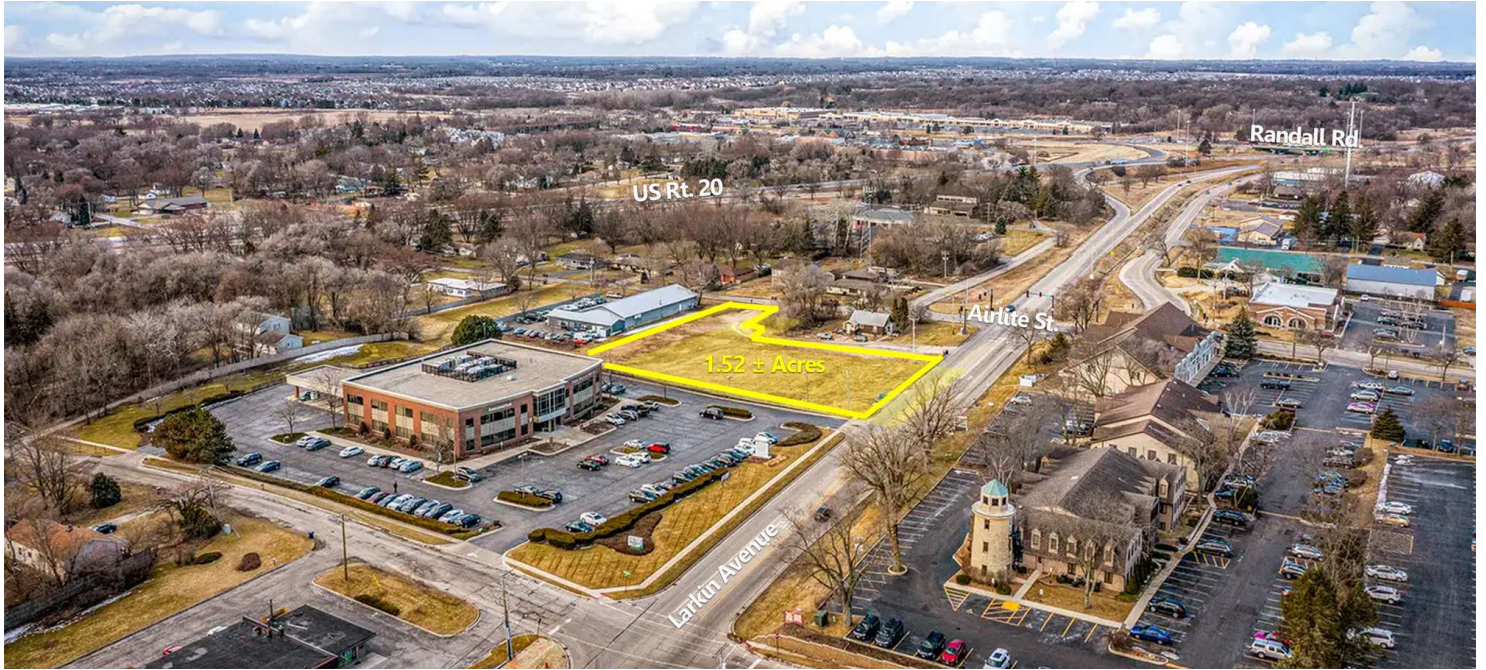
1.52± Acres

Land Property For Sale



BROWN
COMMERCIAL GROUP, INC.

2075 LARKIN AVE., ELGIN, IL 60123

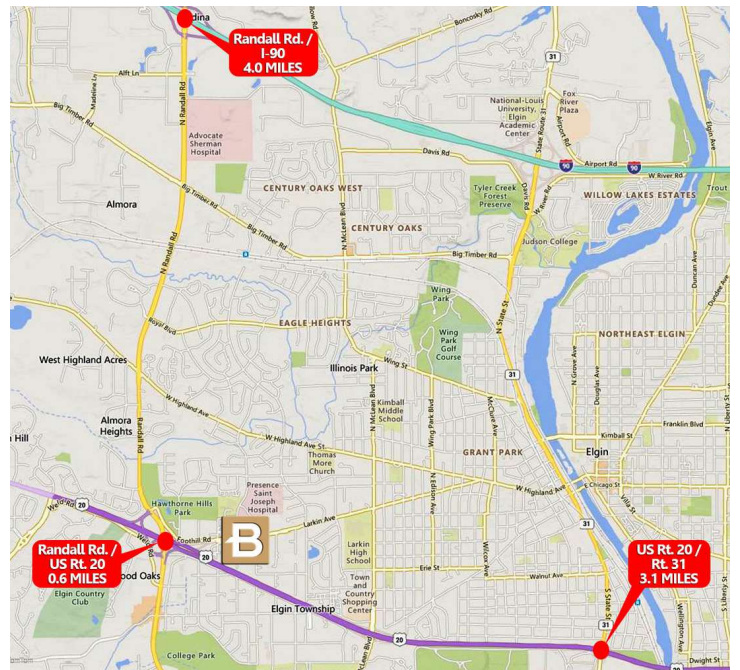


LOCATION DESCRIPTION

Located on Business Route US 20, close to Randall Road/US Rt. 20 interchange.

PROPERTY OVERVIEW

- 1.52± Acre Site
- Zoned AB
- Kane County
- Utilities To Site
- 2 Ingress/Egress Points
- Close To Major Transportation Routes
- Great Visibility, Access
- Sale Price Subject To Offer



DAN BROWN

847.758.9200 x302

DBROWN@BROWNCOMMERCIAL.COM

BROWNCOMMERCIALGROUP.COM

// 1400 E. HIGGINS RD. SUITE A, ELK GROVE VILLAGE, IL 60007

// 847.758.9200

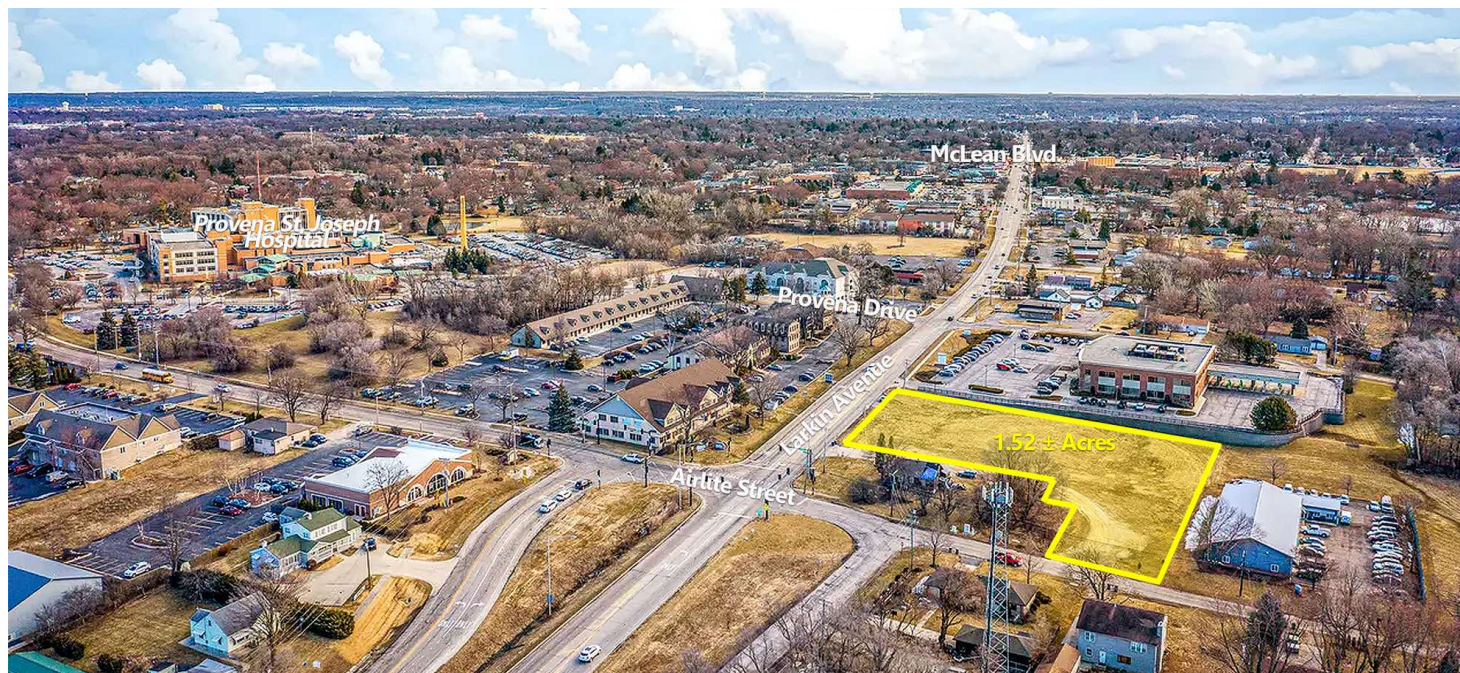
No warranties or representations is made as to the accuracy of the foregoing information. Terms and availability are subject to changes or withdrawal without notice



BROWN
COMMERCIAL GROUP, INC.

Land Property For Sale

2075 LARKIN AVE. ELGIN, IL 60123



DAN BROWN

847.758.9200 x302

DBROWN@BROWNCOMMERCIAL.COM

BROWNCOMMERCIALGROUP.COM // 1400 E. HIGGINS RD. SUITE A, ELK GROVE VILLAGE, IL 60007 // 847.758.9200

No warranties or representations is made as to the accuracy of the foregoing information. Terms and availability are subject to changes or withdrawal without notice