

ARG

For Lease

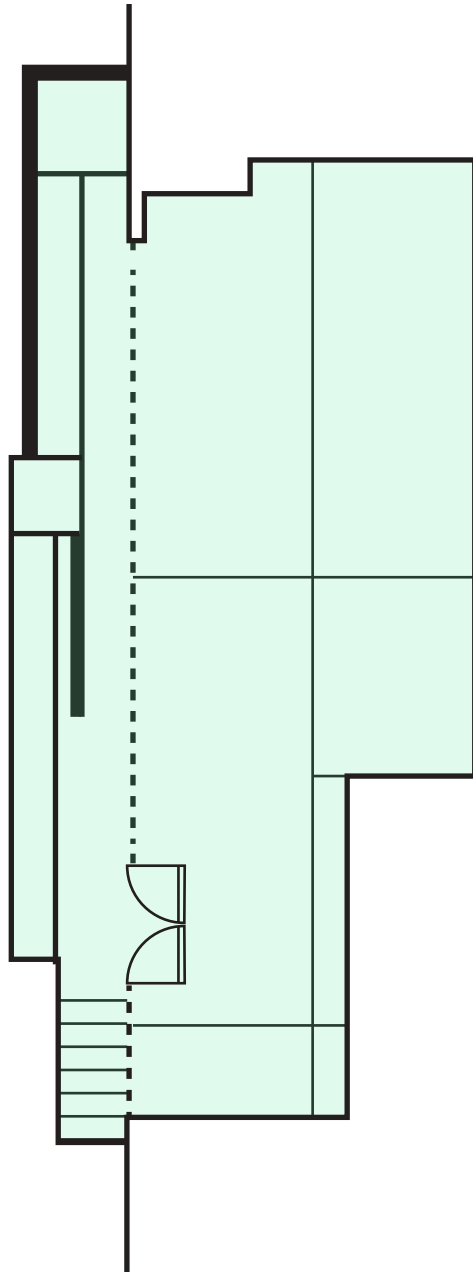
2927
W 16th St

Retail Space For Lease

1,420 sq ft | 2927 W 16th St | Brooklyn, NY 11224

PROPERTY DETAILS

2927 W 16th St, Brooklyn, NY 11224



OVERVIEW

- **Address:** 2927 W 16th St, Brooklyn, NY 11224
- **Cross Streets:** Mermaid Ave and Surf Ave
- **Neighborhood:** Coney Island

SPACE DETAILS

- **Size:** 1,420 sq ft
- **Ceiling Height:** 14 ft
- **Frontage:** 40 ft

HIGHLIGHTS

- Brand New Development
- ADA Accessible
- HVAC

TRANSPORTATION

- 🚇 Coney Island–Stillwell Ave Station (D, F, N, Q lines) – ~5 min walk
- 🚗 None nearby
- ✈️ JFK Airport – 30 min drive (12 mi), LaGuardia Airport – 35 min drive (13 mi)

DEMOGRAPHICS

- **Population:** 48,469
- **Median Household Income:** \$41,449
- **Median Home Value:** \$512,900

NEIGHBORS

Quick Service deli food, Coney bakery, Footprints cafe, Chow Time, 7&7 Gourmet deli, Pizza on the run, Gargiulo's, Mi Candileja

INTERIOR PHOTOS



MRG

2927
W 16th St
Brooklyn, NY 11224

FOR MORE INFORMATION
PLEASE CONTACT:

MOSHE AKIVA
212-314-4684 Ext. 103
Moshe@mrigny.com



Retail Space For Lease