

9W/57

SOLOVIEV



PLAZA DISTRICT NEW YORK, NY

ATLAS
REAL ESTATE NEW YORK

LAUREN WEINER
646.494.9441
lauren@atlas-ny.com

9W57

Location

57th to 58th St, Near 5th Ave

Approximate Size

Ground Floor 7,259 sq/ft

Ceiling Height 18 ft

(58th St Entrance Area, 26 ft Ceiling)

Term

Long-Term

Frontage Exposure

57th Street 69 ft

58th Street 60 ft

Possession

Arranged

Site Status

White Box

Building Tenants

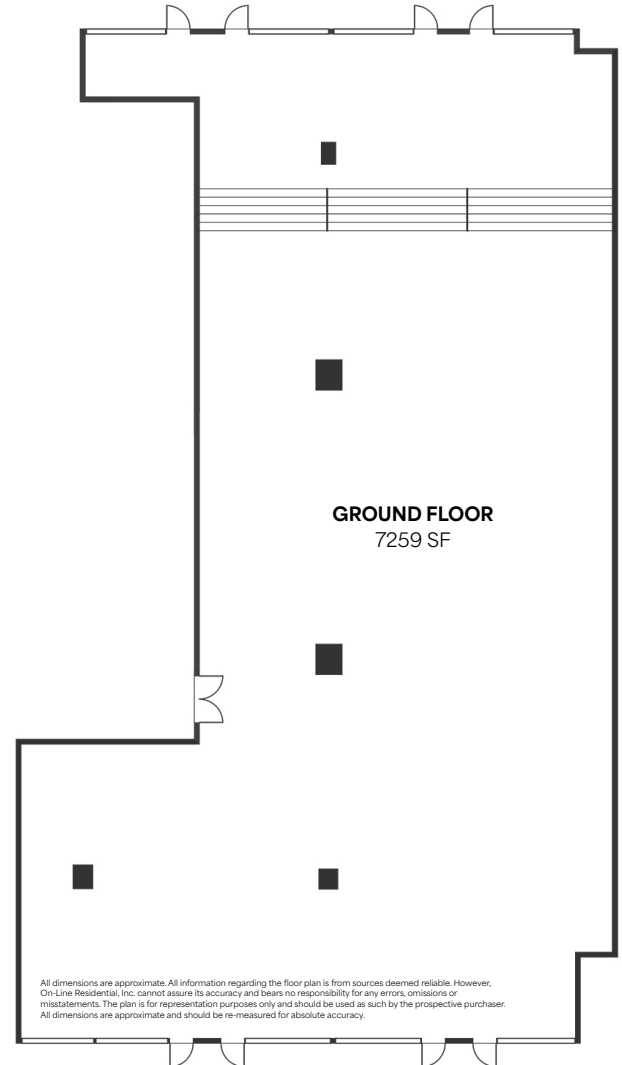
Apollo Global Management, Chanel, Loews, SHL Investments, Coatue Management, D1 Capital Partners and others.

Neighbors

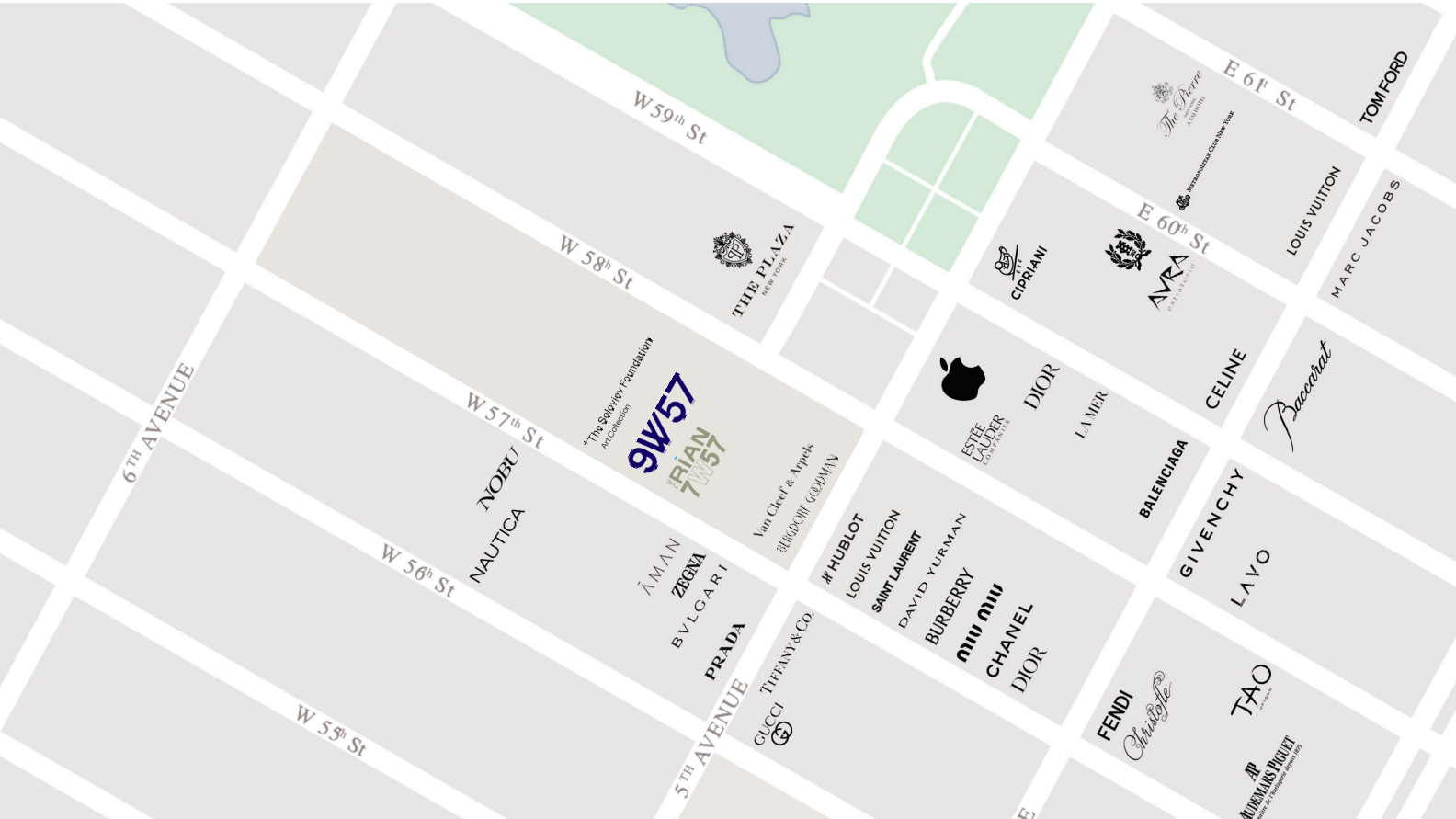
Bergdorf Goodman, Bvlgari, Luis Vuitton, Nobu, Aman Hotel and Residences, Tiffany, The Plaza Hotel, Cipriani, Zenga, Apple, Avra and more. (See map on Page 3 for more information.)

Comments

Located in the iconic 9W57 in the heart of Midtown Manhattan's Billionaire's Row.



9W57



©2025 SOLOVIEV GROUP The information contained herein has been obtained from sources deemed reliable but has not been verified and no guarantee, warranty or representation, either express or implied, is made with respect to such information. Terms of sale or lease and availability are subject to change or withdrawal without notice.

ATLAS
REAL ESTATE NEW YORK

LAUREN WEINER
646.494.9441
lauren@atlas-ny.com