

CARSONBAY10



UP TO ±440,000 SF FOR LEASE
3722 KILGORE PARKWAY | BAYTOWN, TX

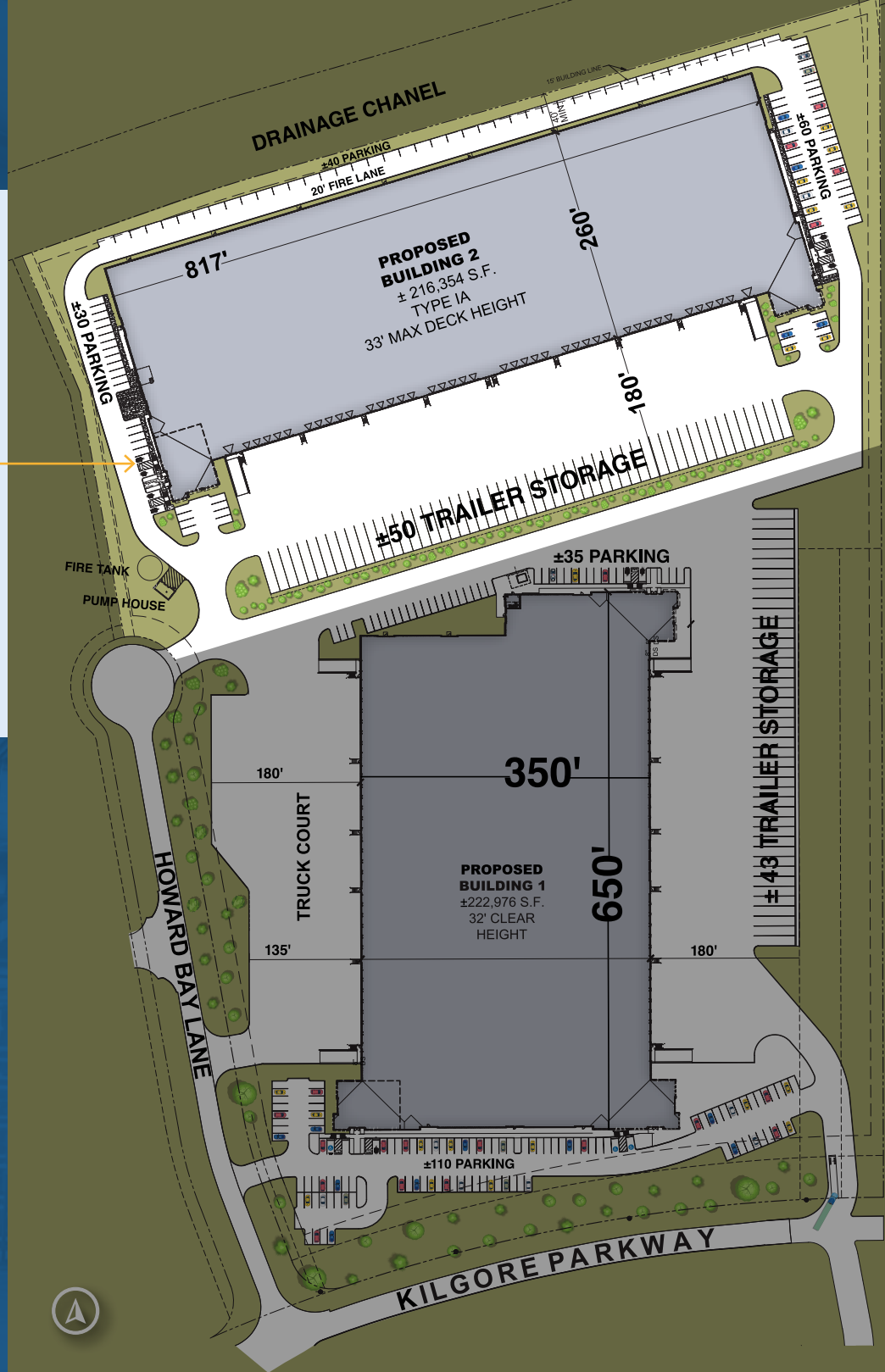
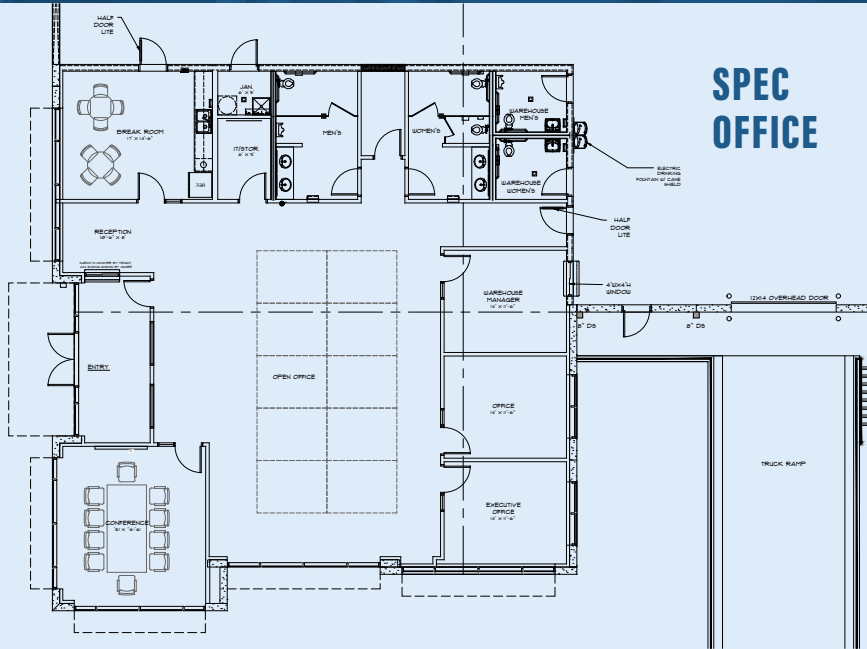
JOSEPH BERWICK
+1 713 425 5842
joseph.berwick@jll.com

ELIZA KLEIN
+1 713 425 1816
eliza.klein@jll.com

RICHARD QUARLES
+1 713 888 4019
richard.quarles@jll.com



PHASE I OVERVIEW



BUILDING 2

TOTAL SF AVAILABLE:
±216,354 SF

SPEC OFFICE SIZE:
±3,376 SF

CONFIGURATION:
Front Load

CLEAR HEIGHT:
32'

BUILDING DEPTHS:
817' X 260'

POWER:
3Phase/480V/4000 Amps

DOCK DOORS:
40 (9' X 10')

DRIVE-IN RAMPS:
4 (12' x 14')

PARKING SPACES:
130 Spaces

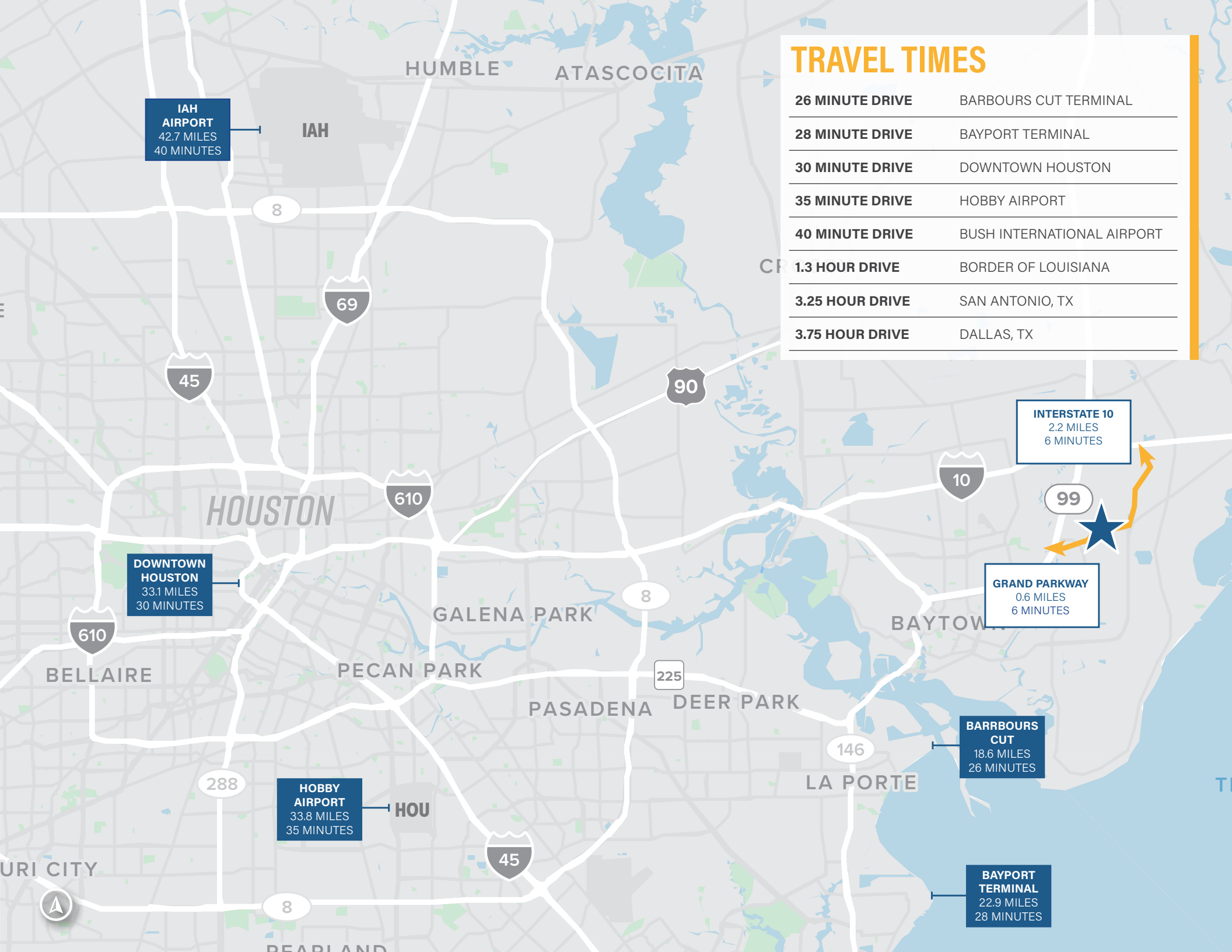
SPRINKLER:
ESFR

TRUCK COURT:
180'

TRAILER PARKING:
50 Spaces

Strategically positioned in a well established industrial corridor, **Carson Bay10** offers a prime location approximately 30 miles east of downtown Houston. This positioning provides direct access to the Grand Parkway and close proximity to I-10, enabling seamless connectivity to Houston's Ship Channel, Port of Houston, and major petrochemical facilities. The area benefits from a robust energy sector workforce and established infrastructure supporting the region's extensive petrochemical and logistics operations, making it an ideal location for industrial and distribution activities serving the greater Houston market.





IAH AIRPORT
42.7 MILES
40 MINUTES

DOWNTOWN HOUSTON
33.1 MILES
30 MINUTES

HOBBY AIRPORT
33.8 MILES
35 MINUTES

INTERSTATE 10
2.2 MILES
6 MINUTES

GRAND PARKWAY
0.6 MILES
6 MINUTES

BARRBOURS CUT
18.6 MILES
26 MINUTES

BAYPORT TERMINAL
22.9 MILES
28 MINUTES

TRAVEL TIMES

26 MINUTE DRIVE	BARBOURS CUT TERMINAL
28 MINUTE DRIVE	BAYPORT TERMINAL
30 MINUTE DRIVE	DOWNTOWN HOUSTON
35 MINUTE DRIVE	HOBBY AIRPORT
40 MINUTE DRIVE	BUSH INTERNATIONAL AIRPORT
1.3 HOUR DRIVE	BORDER OF LOUISIANA
3.25 HOUR DRIVE	SAN ANTONIO, TX
3.75 HOUR DRIVE	DALLAS, TX

CARSON BAY 10



Site
Work



Pad
Ready



Walls Being
Tilted



Under
Roof



Ready for
Occupancy

For more information, contact the leasing team:

JOSEPH BERWICK

+1 713 425 5842

joseph.berwick@jll.com

ELIZA KLEIN

+1 713 425 1816

eliza.klein@jll.com

RICHARD QUARLES

+1 713 888 4019

richard.quarles@jll.com



Although information has been obtained from sources deemed reliable, JLL does not make any guarantees, warranties or representations, express or implied, as to the completeness or accuracy as to the information contained herein. Any projections, opinions, assumptions or estimates used are for example only. There may be differences between projected and actual results, and those differences may be material. JLL does not accept any liability for any loss or damage suffered by any party resulting from reliance on this information. If the recipient of this information has signed a confidentiality agreement with JLL regarding this matter, this information is subject to the terms of that agreement.

©2025 Jones Lang LaSalle IP, Inc. All rights reserved.