

LAKE NONA®



## LAKE NONA TOWN CENTER II

13485 Veteran's Way | Orlando, FL 32827



**TAVISTOCK**  
DEVELOPMENT COMPANY

CLASS A  
OFFICE SPACE  
FOR LEASE

FOR MORE INFO, CONTACT:

**GINGER VETTER**  
C: (407) 619-5245  
[gvetter@tavistock.com](mailto:gvetter@tavistock.com)





## LAKE NONA TOWN CENTER II



**TAVISTOCK**  
DEVELOPMENT COMPANY

CLASS A  
OFFICE SPACE  
FOR LEASE

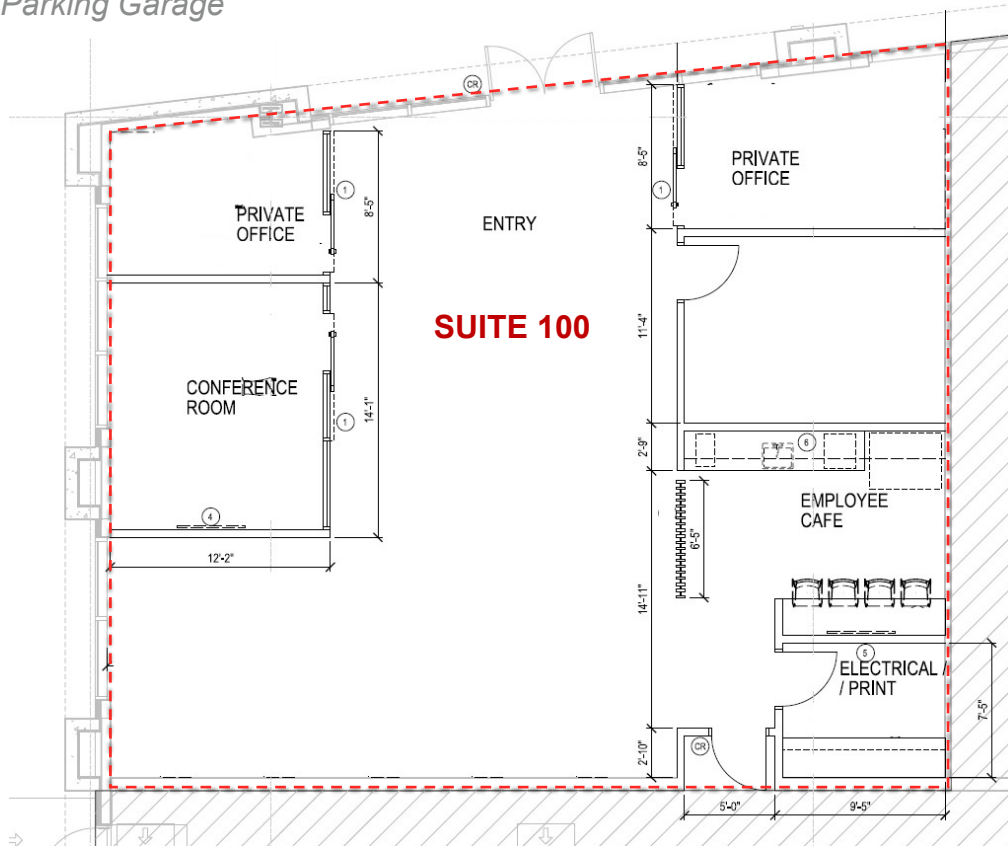
FOR MORE INFO, CONTACT:

**GINGER VETTER**  
C: (407) 619-5245  
[gvetter@tavistock.com](mailto:gvetter@tavistock.com)

# Suite 100 - 1,903 RSF

## 2<sup>nd</sup> Generation Office Space

Parking Garage



*Some furniture may be available.*

**Occupied space, please do not disturb the tenant.**

Parking Garage



Veterans Way

## LAKE NONA TOWN CENTER II: AVAILABLE SPACE



**TAVISTOCK**  
DEVELOPMENT COMPANY

CLASS A  
OFFICE SPACE  
FOR LEASE

FOR MORE INFO, CONTACT:

**GINGER VETTER**  
C: (407) 619-5245 | D: (407) 816-6686  
gvetter@tavistock.com





## LAKE NONA TOWN CENTER II: AVAILABLE SPACE



**TAVISTOCK**  
DEVELOPMENT COMPANY

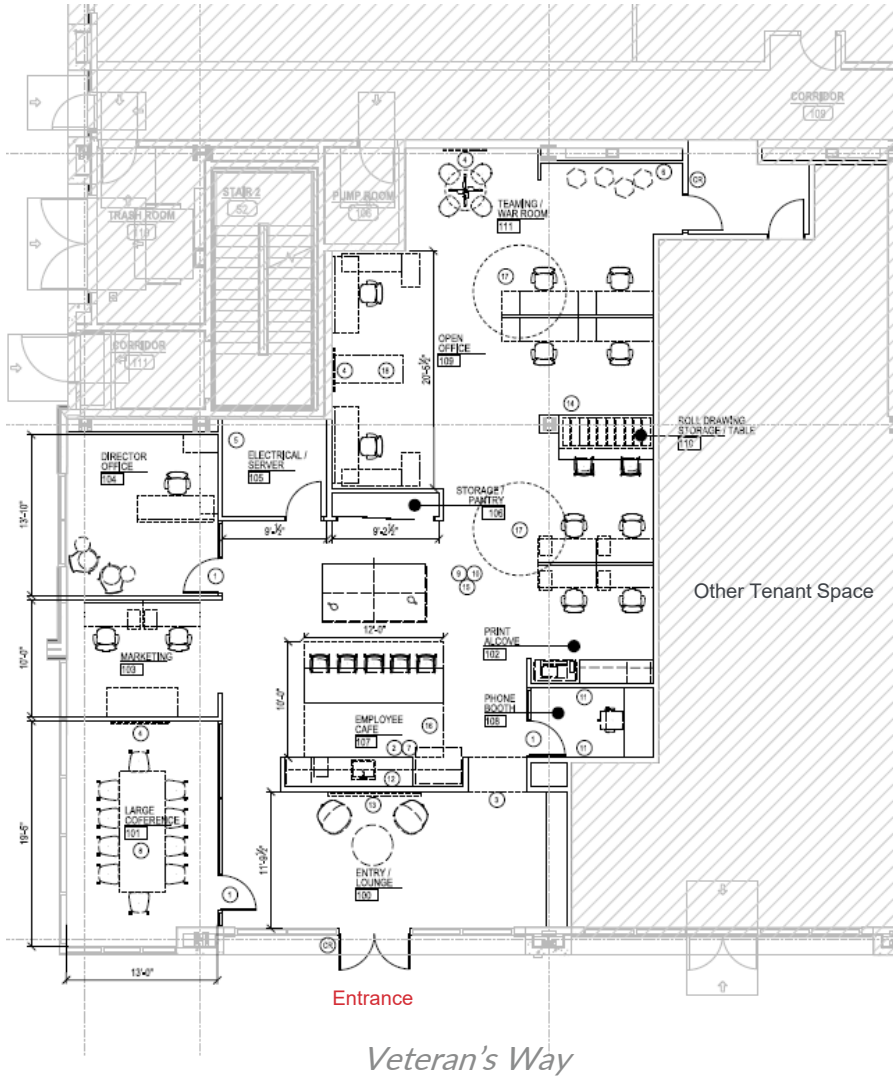
**CLASS A  
OFFICE SPACE  
FOR LEASE**

*FOR MORE INFO, CONTACT:*

**GINGER VETTER**  
C: (407) 619-5245 | D: (407) 816-6686  
[gvetter@tavistock.com](mailto:gvetter@tavistock.com)

## 2<sup>nd</sup> Generation Office Space

**3,034 RSF**



***Some furniture may be available.***

***Occupied space, please do not disturb the tenant.***

## LAKE NONA TOWN CENTER II: AVAILABLE SPACE



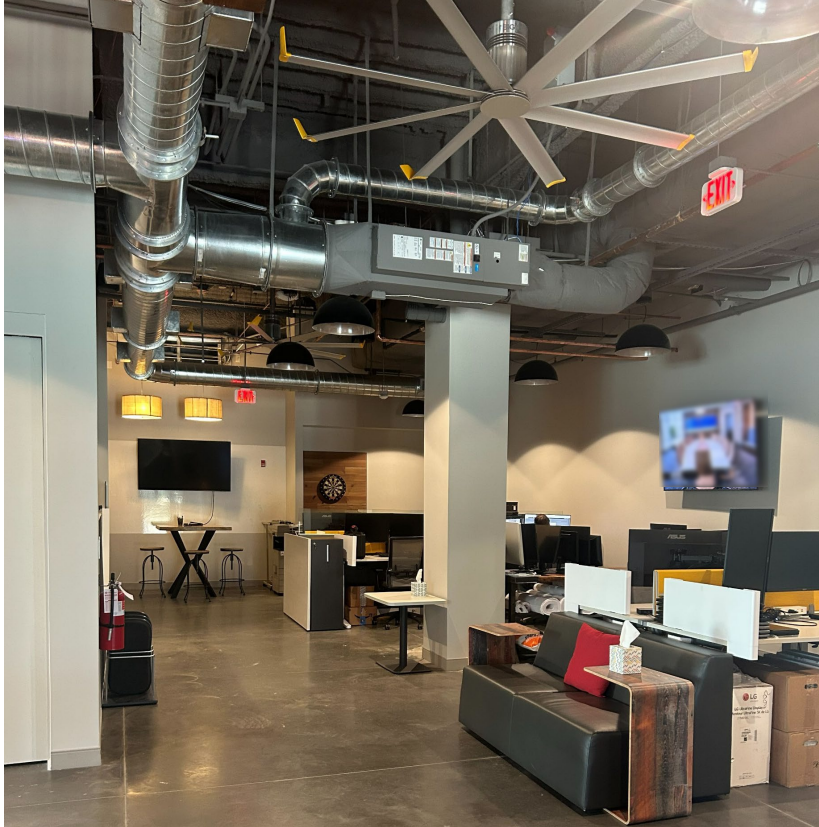
**TAVISTOCK**  
DEVELOPMENT COMPANY

# CLASS A OFFICE SPACE FOR LEASE

FOR MORE INFO, CONTACT:

**GINGER VETTER**  
C: (407) 619-5245  
gvetter@tavistock.com





## LAKE NONA TOWN CENTER II: AVAILABLE SPACE



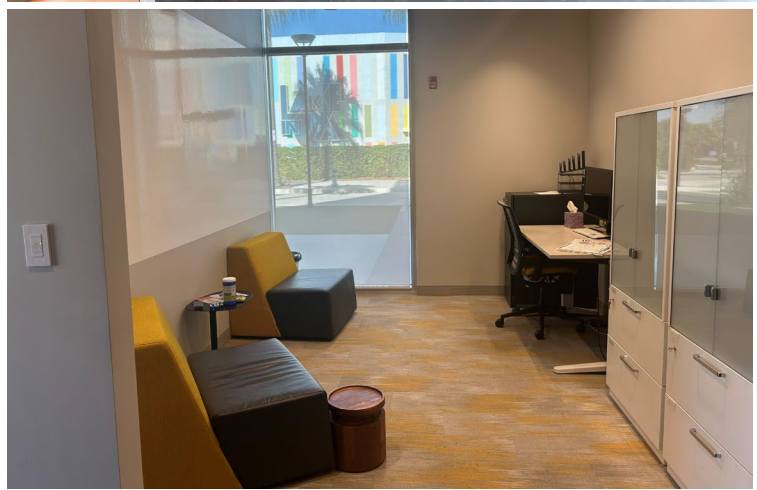
**TAVISTOCK**  
DEVELOPMENT COMPANY

**CLASS A  
OFFICE SPACE  
FOR LEASE**

*FOR MORE INFO, CONTACT:*

**GINGER VETTER**  
C: (407) 619-5245  
[gvetter@tavistock.com](mailto:gvetter@tavistock.com)





## LAKE NONA TOWN CENTER II: AVAILABLE SPACE



**TAVISTOCK**  
DEVELOPMENT COMPANY

**CLASS A  
OFFICE SPACE  
FOR LEASE**

*FOR MORE INFO, CONTACT:*

**GINGER VETTER**  
C: (407) 619-5245  
[gvetter@tavistock.com](mailto:gvetter@tavistock.com)



# LAKE NONA TOWN CENTER



## PROPERTY FEATURES

- Six-story, multi-tenant office building
- Smoke-free community
- Parking in multi-level garage at no additional parking costs - Electric Vehicle charging stations available
- Walking distance to Residence Inn & Courtyard by Marriott, Lake Nona Wave Hotel & Conference Center, restaurants, retail, and state-of-the-art fitness center—Lake Nona Performance Club
- Multiple housing options nearby, some a short walk to Town Center
- Situated along Move Nona's autonomous shuttle route
- Easy access to SR 417, SR 528, Florida's Turnpike, and I-4.
- Only a 10-minute drive Orlando International Airport, which includes Brightline's Orlando Rail Service - a high-speed intercity rail connecting major cities along the southeastern coast, including Orlando, West Palm Beach, Fort Lauderdale, and Miami.



**TAVISTOCK**  
DEVELOPMENT COMPANY

CLASS A  
OFFICE SPACE  
FOR LEASE

FOR MORE INFO, CONTACT:

**GINGER VETTER**  
C: (407) 619-5245  
gvetter@tavistock.com