



AIRLINE PARK SHOPPING CENTER

Metairie, Louisiana

Airline Park Shopping Center is a 53,380 square foot neighborhood shopping center located in Metairie, Louisiana, at the northeast corner of Airline Drive (Highway 61) and Airline Park Boulevard, four miles from the Louis Armstrong International Airport.



\$82,031

AVERAGE
HOUSEHOLD INCOME

Primary Trade Area

CENTER PROFILE

Total Square Feet	53,380
Number of Stores/Services	8
Number of Levels	1
Number of Parking Spaces	295

MAJOR TENANTS

Family Dollar	13,838 SF
Harbor Freight	14,494 SF
Dollar Tree	10,896 SF

MARKET DEMOGRAPHICS

1 Mile	
Population	14,190
Number of Households	6,232
Average Household Income	\$77,036

3 Mile	
Population	129,909
Number of Households	55,954
Average Household Income	\$77,651

5 Mile	
Population	245,112
Number of Households	102,937
Average Household Income	\$82,031

Daily Vehicle Count	
Airline Highway	34,638

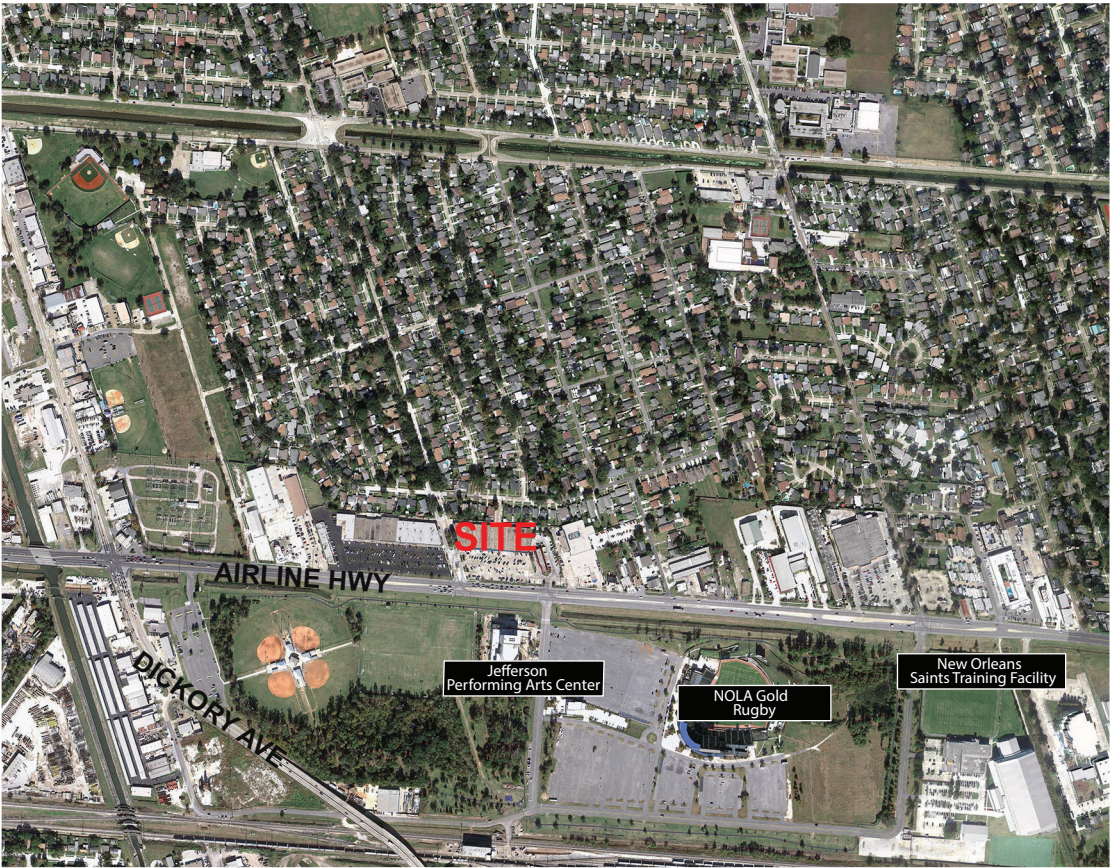


AIRLINE PARK SHOPPING CENTER
6125-6425 Airline Drive
Metairie, LA 70003

AIRLINE PARK SHOPPING CENTER

TENANT LIST

APPLIANCES	
City Appliances	6423
RESTAURANT/FOOD	
CiCi's Pizza	6311
McDonald's	6309
Subway	6415
SERVICES	
H&R Block	6421
MAJOR TENANTS	
Dollar Tree	6315
Family Dollar	6425
Harbor Freight	6409



LEASING INQUIRIES

Morguard Management Company Inc.
6305 Airline Drive, Metairie, LA 70003
Phone 504-904-8546
Amanda Punch-Gill Apunchgill@morguard.com
morguard.com



Real Estate Potential. *Realized.*

AIRLINE PARK SHOPPING CENTER

