



TRI STATE
COMMERCIAL®
REAL ESTATE EXPERTS

For Lease



7th Floor Penthouse For Lease

1,300 - 3,300 SF

2067 Broadway • New York • NY

For Pricing **Call: 718-437-6100**

Shlomi Bagdadi
📞 718.437.6100
sb@tristatecr.com

Chandler Slate
📞 718.437.6100 x108
ChandlerS@TriStateCR.com

Ely Akiva
📞 718.437.6100 x152
Ely.A@TriStateCR.com



Location Overview

Located in the Lincoln Square neighborhood of Manhattan between W 71st St & W 72nd St, steps away from the 72nd St subway station.

Nearest Transit: 1, 2, & 3 trains at 72nd St and the M104, M72, & M5 bus lines.

Nearby tenants include Walgreens, Pinkberry, Cafe Luxembourg, Gong Cha, Trader Joe's, Citibank, Chipotle, Capital One, Dunkin', Bloomingdale's, Chase Bank, The Vitamin Shoppe, Vanguard Wine Bar, and more!

Main Highlights

- ▶ 7th Floor - Penthouse
- ▶ 2nd generation fitness space
- ▶ Elevator
- ▶ Building lobby slated for renovation
- ▶ Divisible
- ▶ Space A - 2,000 SF
- ▶ Space B - 1,300 SF
- ▶ Total Space - 3,300 SF



20,790 SF

Total Building Size



3,123 SF

Lot Size



C4-6A

Zoning

FOR LEASE • 1,300 - 3,300 SF • For Pricing

Call: 718-437-6100

Shlomi Bagdadi
📞 718.437.6100
sb@tristatecr.com

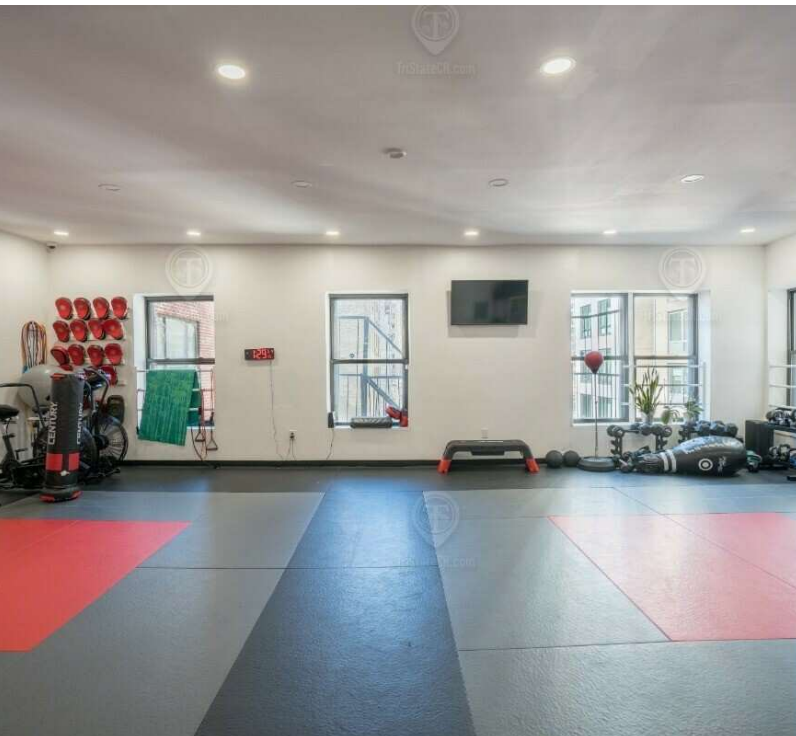
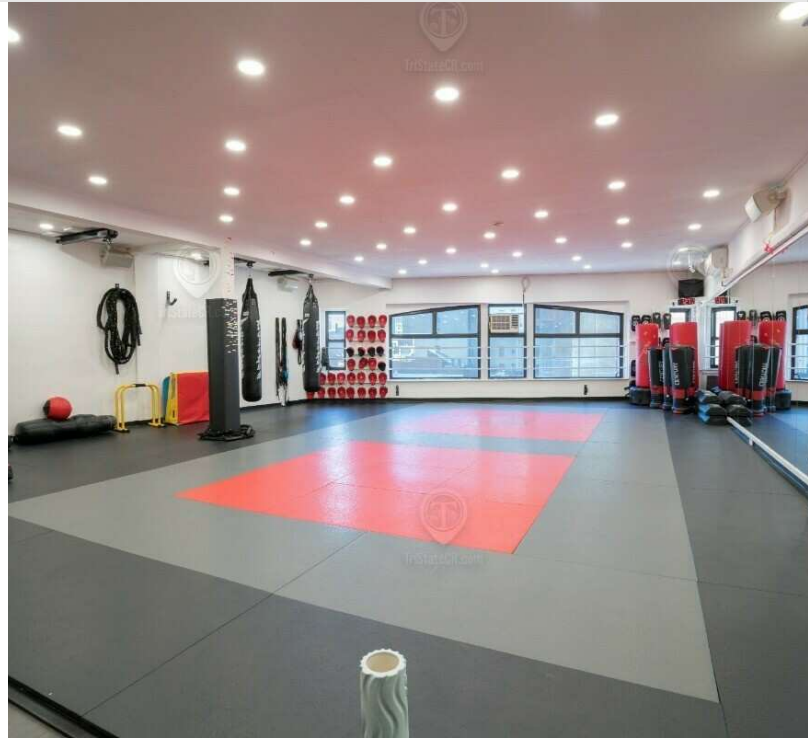
Chandler Slate
📞 718.437.6100 x108
ChandlerS@TriStateCR.com

Ely Akiva
📞 718.437.6100 x152
Ely.A@TriStateCR.com

Broker is relying on Landlord or other Landlord-supplied sources for the accuracy of said information and has no knowledge of the accuracy of it. Broker makes no representation and/or warranty, expressed or implied, as to the accuracy of such information.

Additional Photos

2067 Broadway, New York, NY 10023



FOR LEASE • 1,300 - 3,300 SF • For Pricing

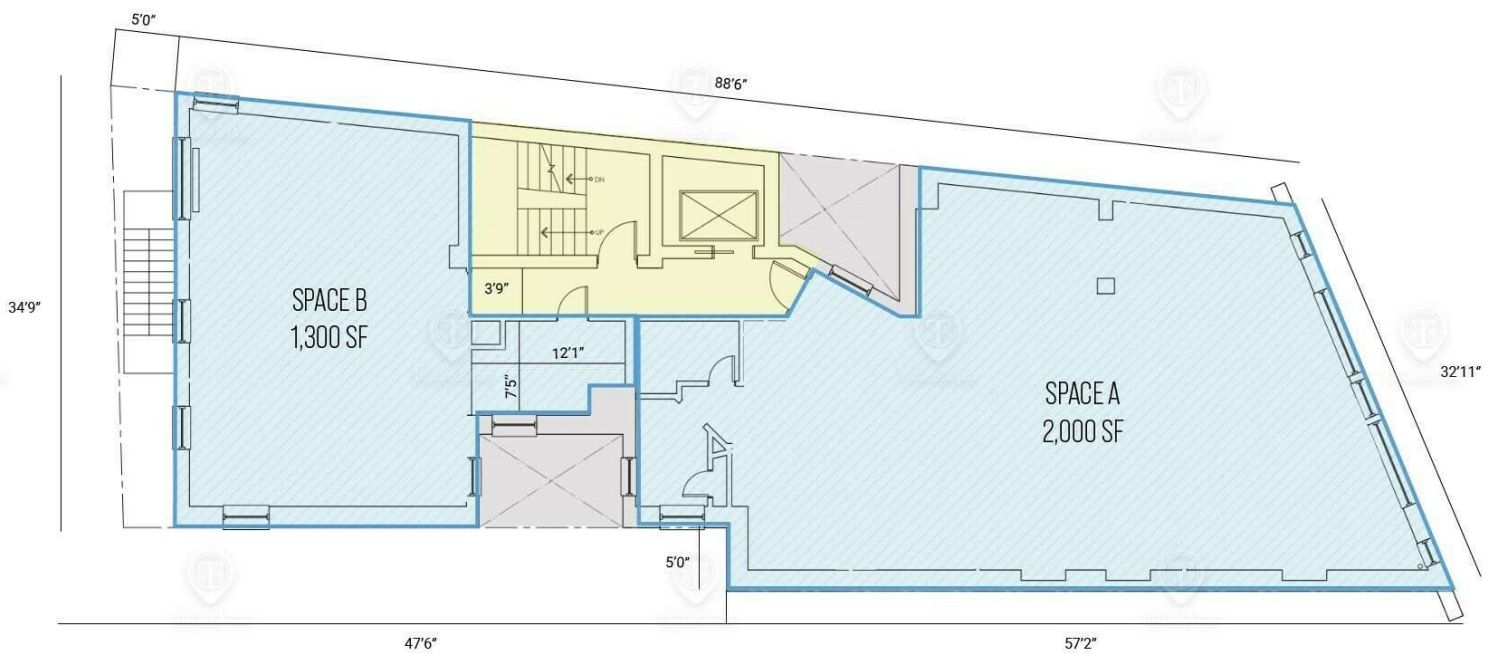
Call: 718-437-6100

Shlomi Bagdadi
☎ 718.437.6100
sb@tristatecr.com

Chandler Slate
☎ 718.437.6100 x108
ChandlerS@TriStateCR.com

Ely Akiva
☎ 718.437.6100 x152
Ely.A@TriStateCR.com

Broker is relying on Landlord or other Landlord-supplied sources for the accuracy of said information and has no knowledge of the accuracy of it. Broker makes no representation and/or warranty, expressed or implied, as to the accuracy of such information.



2067 BROADWAY
 7TH FLOOR
 TOTAL AVAILABLE SPACE: 3,300 SF
 ALL SQUARE FOOTAGES
 ARE APPROXIMATE

FOR LEASE • 1,300 - 3,300 SF • For Pricing

Call: 718-437-6100

Shlomi Bagdadi
 ☎ 718.437.6100
 sb@tristatecr.com

Chandler Slate
 ☎ 718.437.6100 x108
 ChandlerS@TriStateCR.com

Ely Akiva
 ☎ 718.437.6100 x152
 Ely.A@TriStateCR.com

Broker is relying on Landlord or other Landlord-supplied sources for the accuracy of said information and has no knowledge of the accuracy of it. Broker makes no representation and/or warranty, expressed or implied, as to the accuracy of such information.



Map data ©2024 Google

FOR LEASE • 1,300 - 3,300 SF • For Pricing

Call: 718-437-6100

Shlomi Bagdadi
 718.437.6100
 sb@tristatecr.com

Chandler Slate
 718.437.6100 x108
 ChandlerS@TriStateCR.com

Ely Akiva
 718.437.6100 x152
 Ely.A@TriStateCR.com

Broker is relying on Landlord or other Landlord-supplied sources for the accuracy of said information and has no knowledge of the accuracy of it. Broker makes no representation and/or warranty, expressed or implied, as to the accuracy of such information.



POPULATION **0.25 MILES** **0.5 MILES** **1 MILE**

Total Population	28,521	73,764	161,373
Average Age	46.3	44.6	43.2
Average Age (Male)	47.5	44.6	43.4
Average Age (Female)	45.4	44.9	43.7



161,373

People within 1 Mile

HOUSEHOLDS & INCOME **0.25 MILES** **0.5 MILES** **1 MILE**

Total Households	19,512	48,596	103,702
# of Persons per HH	1.5	1.5	1.6
Average HH Income	\$183,572	\$187,590	\$188,964
Average House Value	\$1,203,810	\$1,305,106	\$1,241,132





\$188,964


Avg Household Income

FOR LEASE • 1,300 - 3,300 SF • For Pricing

Call: 718-437-6100

Shlomi Bagdadi
 718.437.6100
 sb@tristatecr.com

Chandler Slate
 718.437.6100 x108
 ChandlerS@TriStateCR.com

Ely Akiva
 718.437.6100 x152
 Ely.A@TriStateCR.com

Broker is relying on Landlord or other Landlord-supplied sources for the accuracy of said information and has no knowledge of the accuracy of it. Broker makes no representation and/or warranty, expressed or implied, as to the accuracy of such information.

For Lease



TriStateCR.com

1,300 - 3,300 SF | 2067 Broadway
7th Floor Penthouse For Lease

1,300 - 3,300 SF • For Pricing **Call: 718-437-6100**

2067 Broadway • New York • NY

Shlomi Bagdadi
☎ 718.437.6100
sb@tristatecr.com

Chandler Slate
☎ 718.437.6100 x108
ChandlerS@TriStateCR.com

Ely Akiva
☎ 718.437.6100 x152
Ely.A@TriStateCR.com

