

Gateway 270

*Gateway Center Drive
Clarksburg, MD*

DC LIGHT
Gateway 270



**JLL
LEASING TEAM**

Bernie McCarthy
301.287.3263
bernie.mccarthy@jll.com

Amanda Davis
301.287.9970
amanda.davis@jll.com

Danny Sheridan
301.287.9922
danny.sheridan@jll.com

Patrick Hall
301.287.9931
patrick.hall@jll.com



**FLEX/
INDUSTRIAL
SPACE**



**IMMEDIATE
ACCESS TO
RT 28 & RT 50**



**HIGH QUALITY
OFFICE SPACE**



**INSTITUTIONALLY
OWNED AND
MANAGED**

E L I O N 

DC LIGHT
Gateway 270

22616 Gateway Center Drive

22610 Gateway Center Drive

22600 Gateway Center Drive

22530 Gateway Center Drive

22520 Gateway Center Drive

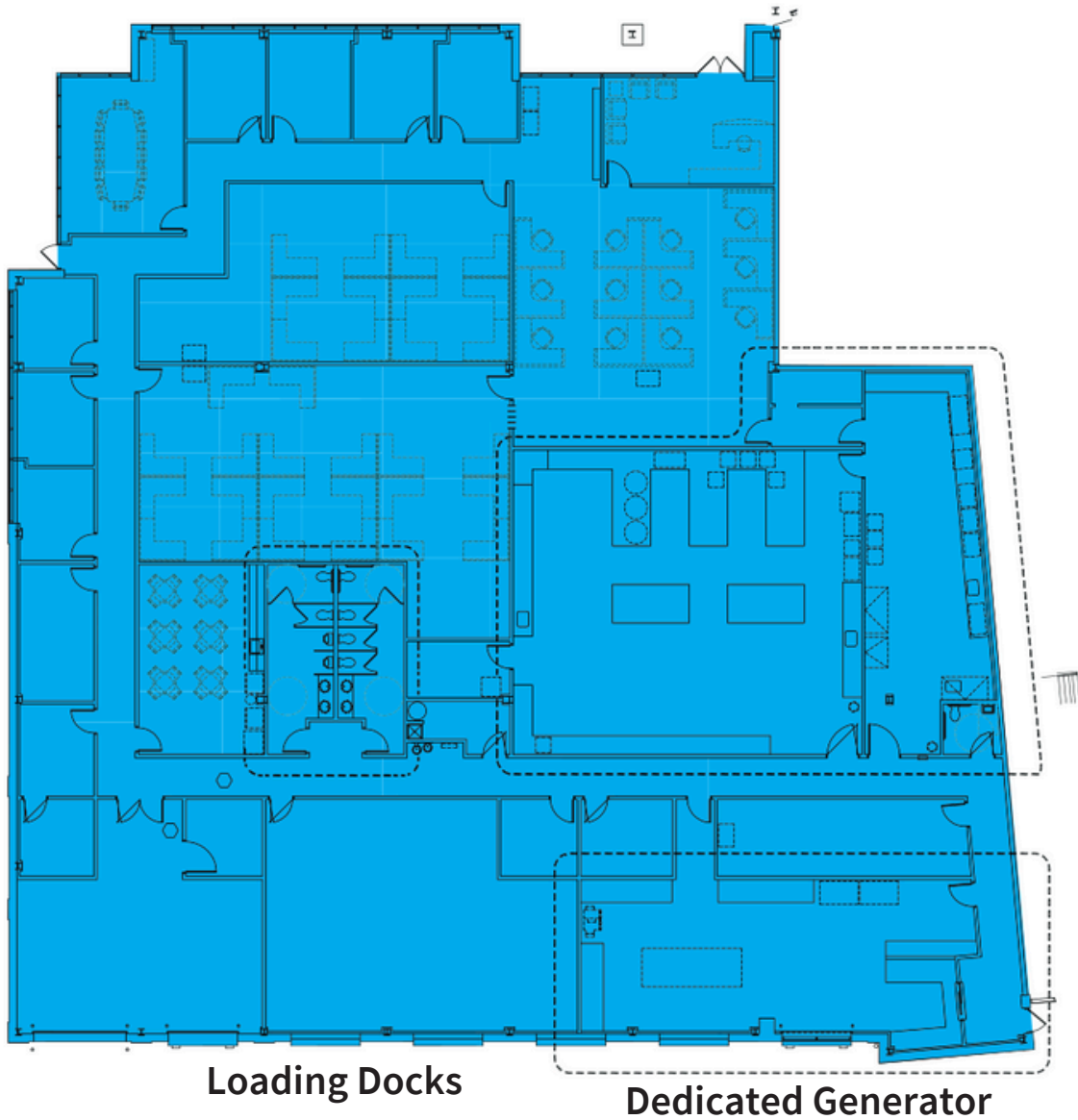
22516 Gateway Center Drive





22520 Gateway Center Drive

Suite 400 | 16,124 SF | 30/50 wet lab to office ratio

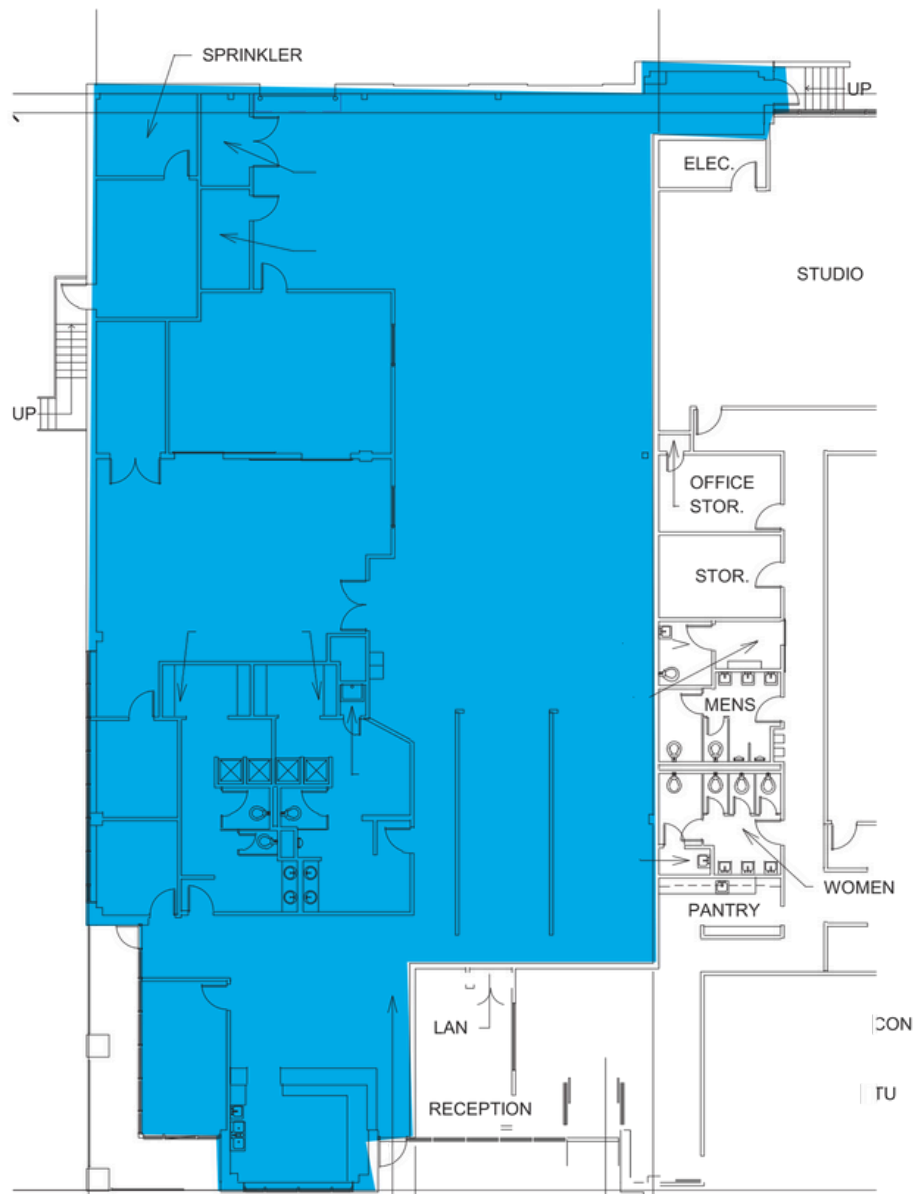


Space Highlights

- 10 foot finished office ceiling heights
- 20 foot clear ceiling heights in the lab/warehouse spaces
- Ideal for manufacturing

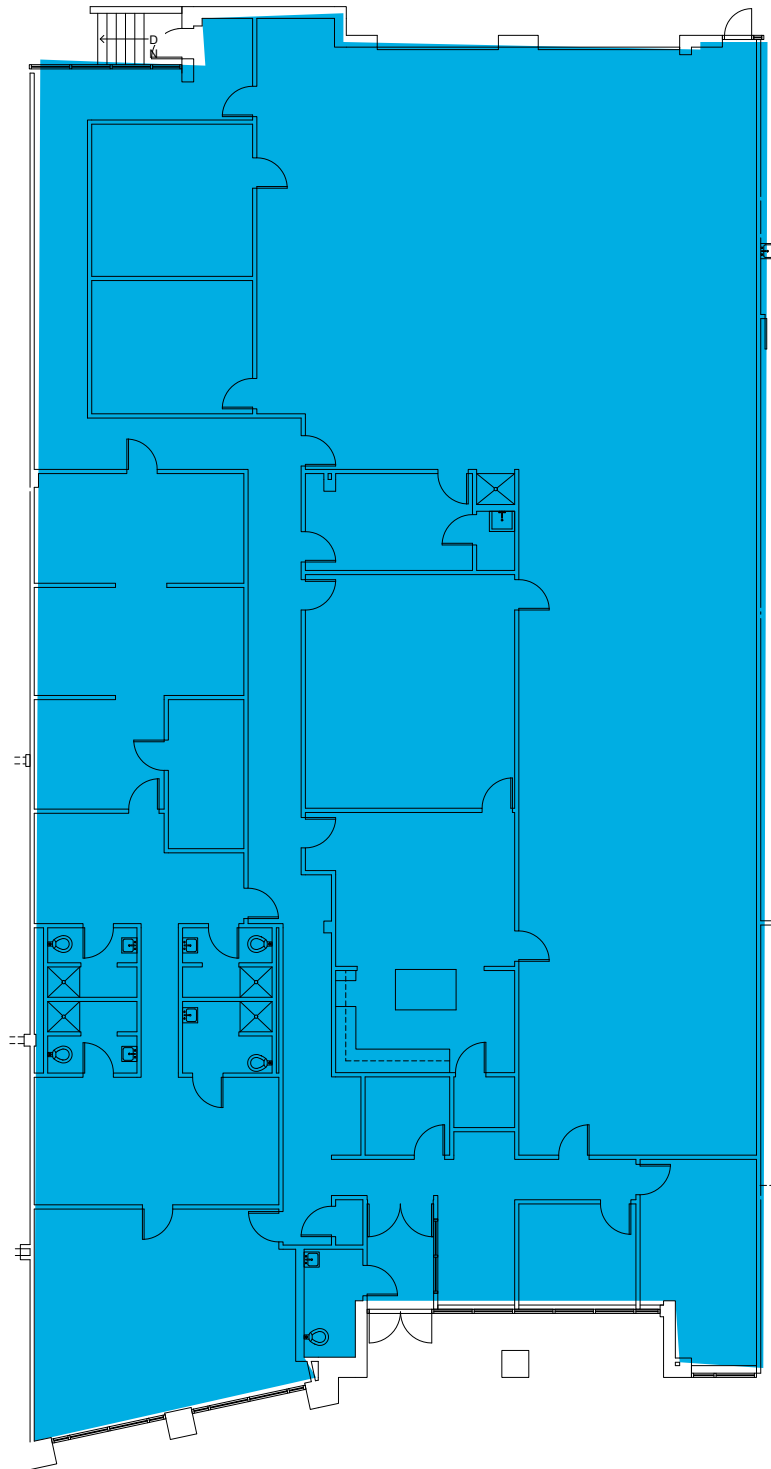
22530 Gateway Center Drive

Suite 100 | 8,135 SF



22610 Gateway Center Drive

Suite 300 | 9,823 SF



22616 Gateway Center Drive

Suite 400 | 10,909 SF



DC LIGHT
Gateway 270

**FOR MORE INFORMATION,
PLEASE CONTACT:**

Bernie McCarthy
301.287.3263
bernie.mccarthy@jll.com

Amanda Davis
301.287.9970
amanda.davis@jll.com

Danny Sheridan
301.287.9922
danny.sheridan@jll.com

Patrick Hall
301.287.9931
patrick.hall@jll.com



E L I O N

Although information has been obtained from sources deemed reliable, neither Owner nor JLL makes any guarantees, warranties or representations, express or implied, as to the completeness or accuracy of the information contained herein. Any projections, opinions, assumptions or estimates used are for example only. There may be differences between projected and actual results, and those differences may be material. The Property may be withdrawn without notice. Neither Owner nor JLL accepts any liability for any loss or damages suffered by any party resulting from reliance on this information. If the recipient of this information has signed a confidentiality agreement regarding this matter, this information is subject to the terms of that agreement. ©2025, Jones Lang LaSalle IP, Inc. All rights reserved.