

MEDICAL CENTER MCKINNEY II

4510 Medical Center Dr.
McKinney, TX 75069

Healthpeak®



Leasing Information:
214.461.2388

Douglas Maclay
214.461.2371
dmaclay@lpc.com

Zoë Mysing
504.982.5799
zmysing@lpc.com

Banks Newton
214.461.2388
bnewton@lpc.com

Lincoln

Lincoln Property Company
8140 Walnut Hill Lane Suite 700
Dallas, TX 75231

www.lpc.com

MEDICAL CENTER
MCKINNEY II

4510 Medical Center Dr. | McKinney, TX 75069

Outpatient Medical For Lease

2,622 - 3,013 SF



Property Overview

McKinney Medical Office Buildings I and II is a Class A, outpatient medical building with institutional ownership located on the campus of Medical City of McKinney. The building is conveniently located on the SEC of State Highway 121 and US Highway 75 with great interstate visibility. The building has multiple move-in ready spec suites, and multiple 2nd generation outpatient medical spaces where we can offer generous tenant improvement packages.

Property Highlights

- Class A, outpatient medical building with institutional ownership
- Located on the campus of Medical City McKinney
- Great interstate visibility
- Multiple move-in ready spec suites
- 2nd generation outpatient medical spaces available
- Generous tenant improvement packages

Availabilities	Size
Suite 309	2,622 SF
Suite 311	3,013 SF

Douglas Maclay

214.461.2371

dmaclay@lpc.com

Zoë Mysing

504.982.5799

zmysing@lpc.com

Banks Newton

214.461.2388

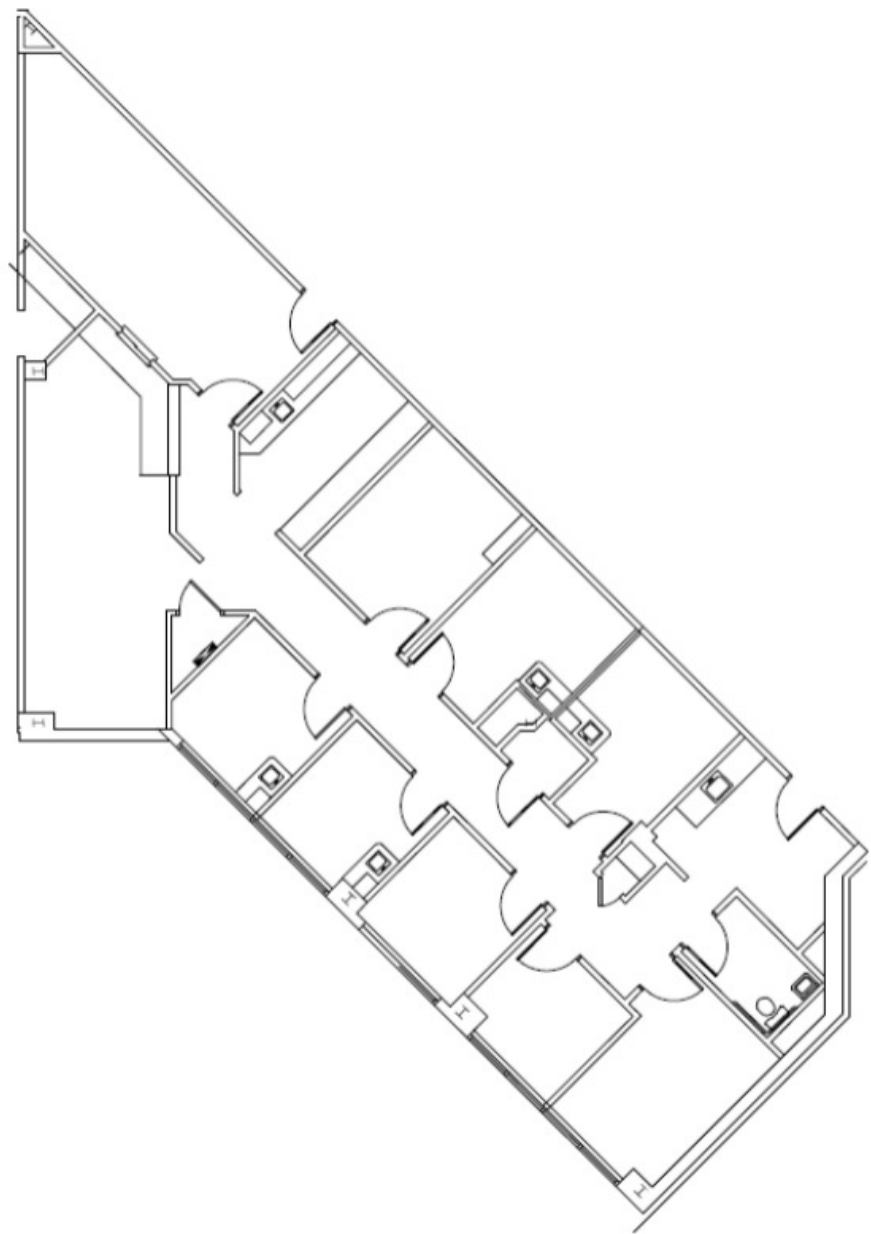
bnewton@lpc.com



MEDICAL CENTER MCKINNEY II

4510 Medical Center Dr. | McKinney, TX 75069

Suite 309
2,622 SF



Suite	Size
Suite 309	2,622 SF

Douglas Maclay
214.461.2371
dmaclay@lpc.com

Zoë Mysing
504.982.5799
zmysing@lpc.com

Banks Newton
214.461.2388
bnewton@lpc.com

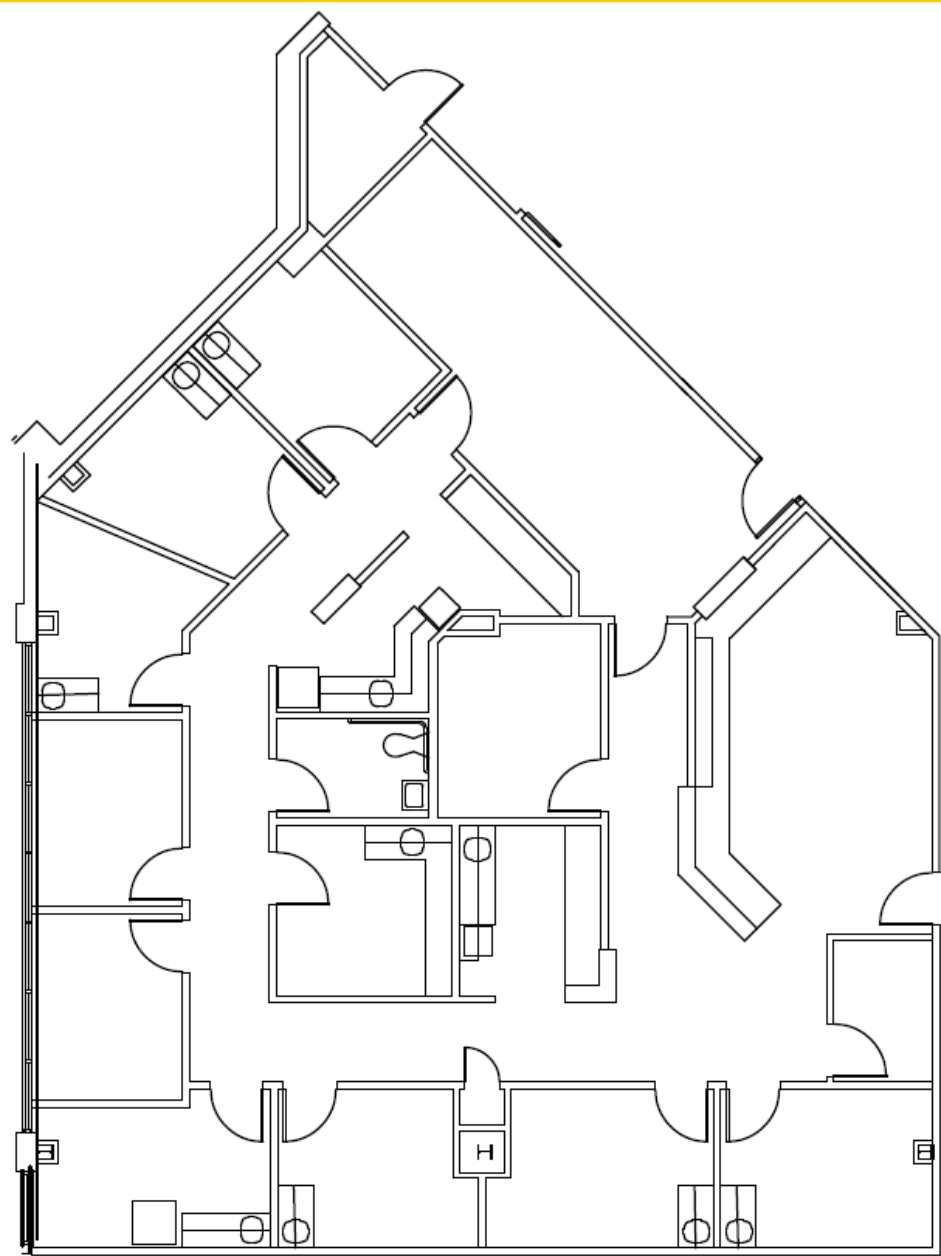
Lincoln

MEDICAL CENTER MCKINNEY II

4510 Medical Center Dr. | McKinney, TX 75069

Suite 311

3,013 SF



Suite	Size
Suite 311	3,013 SF

Douglas Maclay
214.461.2371
dmaclay@lpc.com

Zoë Mysing
504.982.5799
zmysing@lpc.com

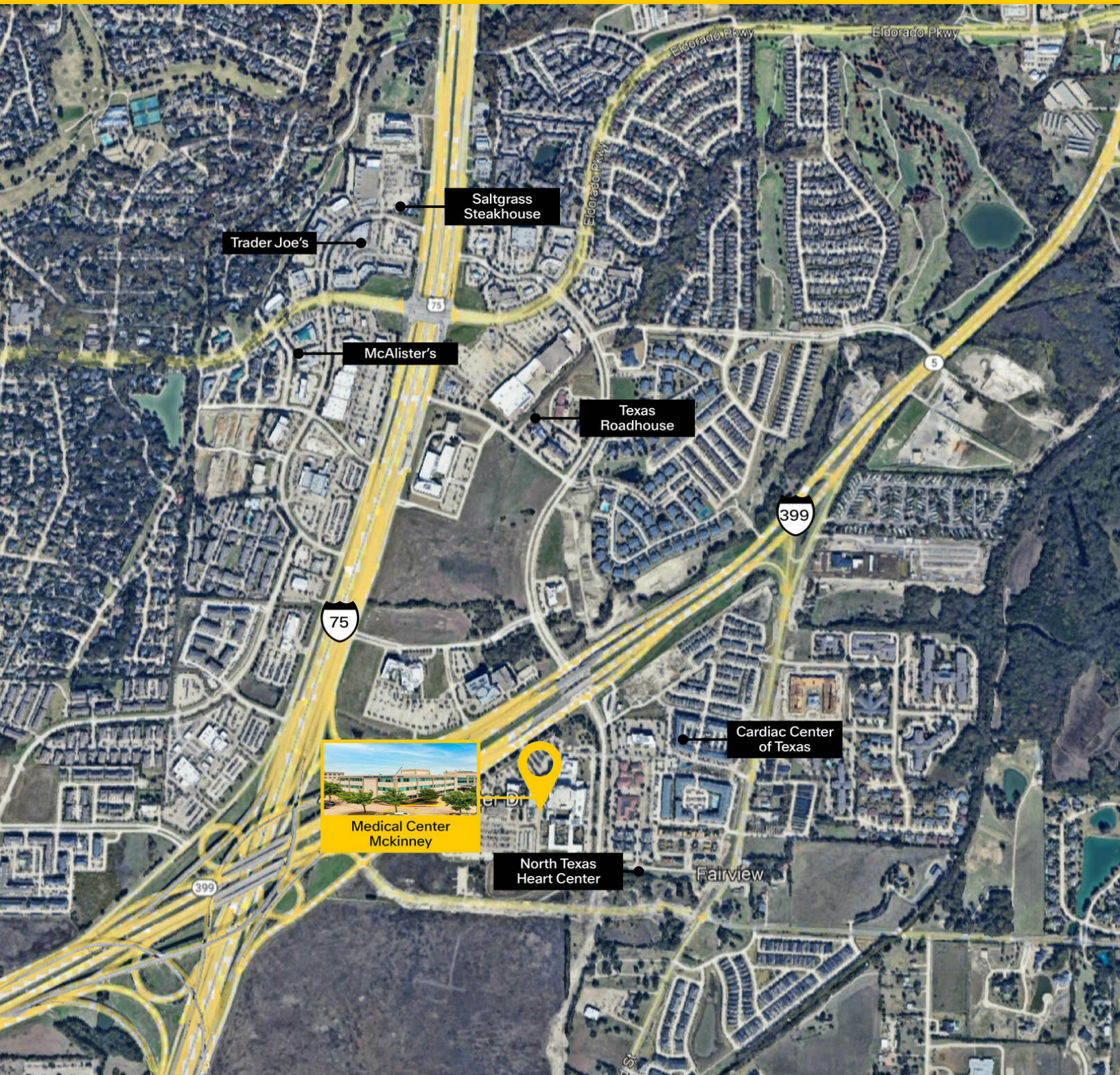
Banks Newton
214.461.2388
bnewton@lpc.com

Lincoln

MEDICAL CENTER MCKINNEY II

4510 Medical Center Dr. | McKinney, TX 75069

Nearby Amenities



Douglas Maclay

214.461.2371
dmaclay@lpc.com

Zoë Mysing

504.982.5799
zmysing@lpc.com

Banks Newton

214.461.2388
bnewton@lpc.com

Lincoln



MEDICAL CENTER MCKINNEY II

Healthpeak® | **DOC**
LISTED
NYSE

4510 Medical Center Dr.
McKinney, TX 75069

Leasing Information:
214.461.2388

Douglas Maclay
214.461.2371
dmaclay@lpc.com

Zoë Mysing
504.982.5799
zmysing@lpc.com

Banks Newton
214.461.2388
bnewton@lpc.com

Lincoln

Lincoln Property Company
8140 Walnut Hill Lane Suite 700
Dallas, TX 75231

www.lpc.com