



CBRE

**Hackman
Capital
Partners**



**240 n
5th street**

**2,582 TO 6,244
SF AVAILABLE**

FIND YOUR PERFECT SPACE in the historic american electric building

2,582 TO 6,244 SF AVAILABLE

240 N. Fifth Street is a three-story, multi-tenant building, constructed in 1944 and was first occupied by American Electric.

Expansive views of Downtown Columbus are framed by large windows on the tall, white brick walls. Updated lighting and flooring, and new bathrooms and kitchens make this modern warehouse a ready home for any variety of office user.

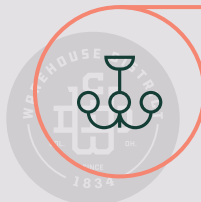
Landlords, Hackman Capital Partners, have completely renovated the entry way, lobby and other building common areas, as well as the available suites, all while celebrating the authentic character of the original vintage warehouse.



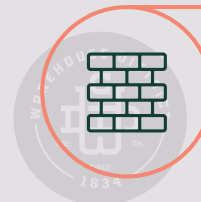
three-story, multi-tenant building with 49,742 SF total RBA



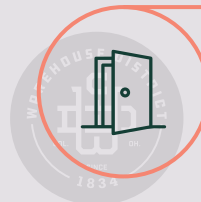
20' ceiling heights with panoramic views of downtown columbus



newly installed LED lighting throughout the space



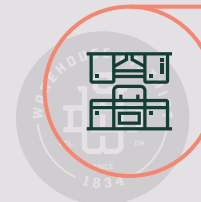
unique exposed brick and beam construction



completely renovated entryway and common areas

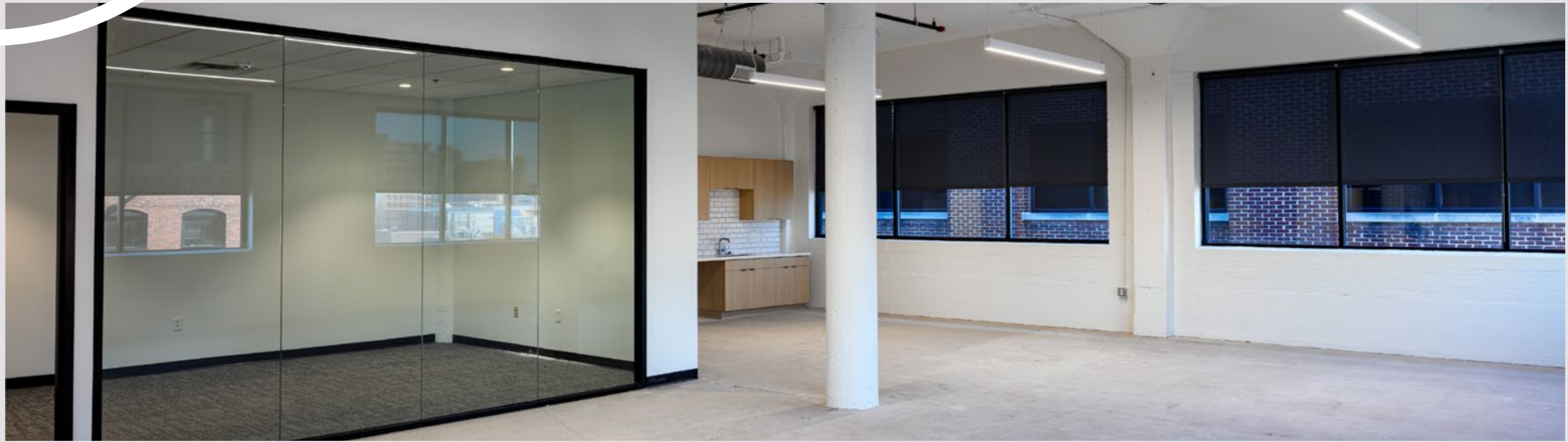


constructed in 1944, former home of american electric

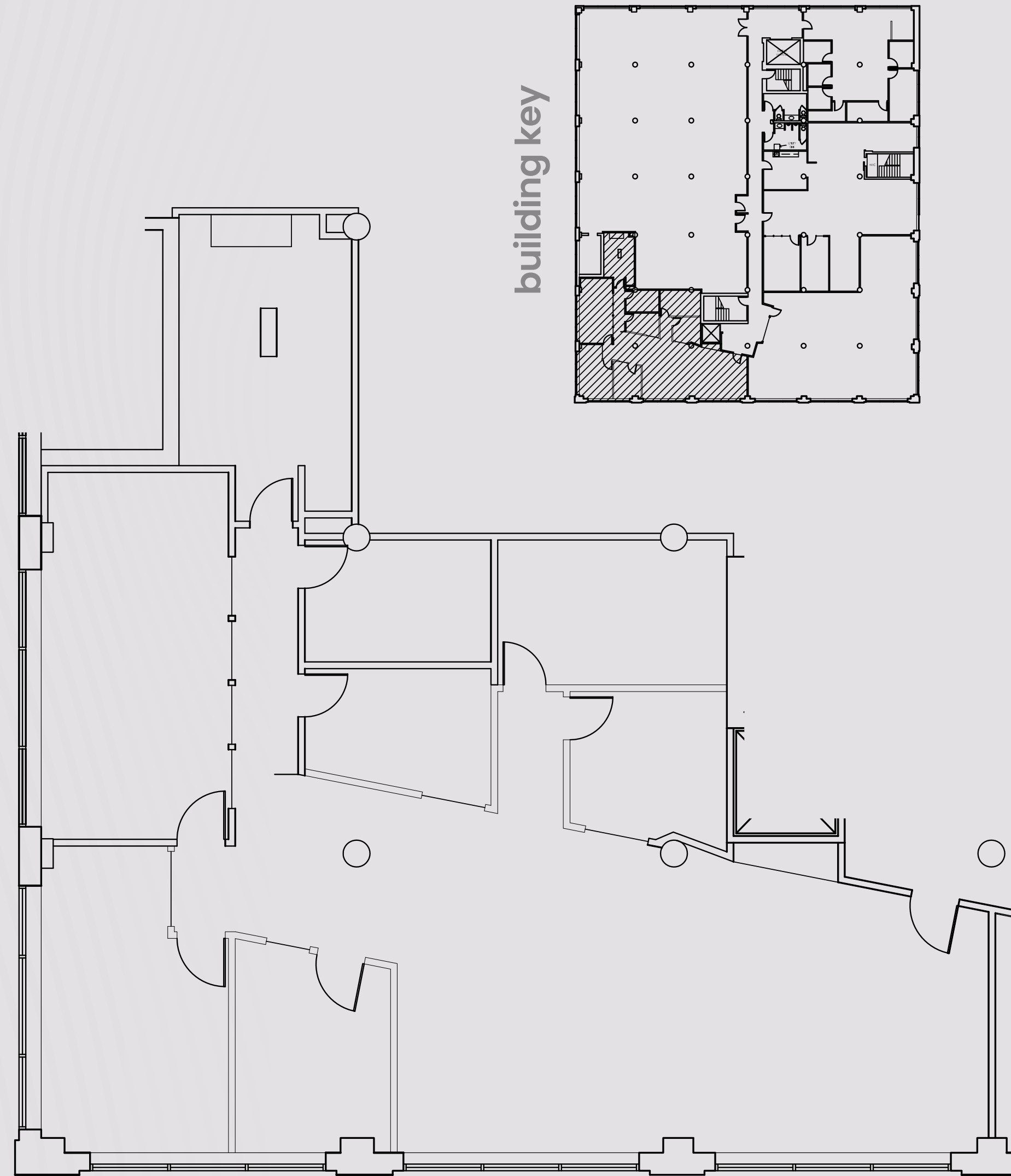


modernized suites with upgraded bathrooms and kitchens

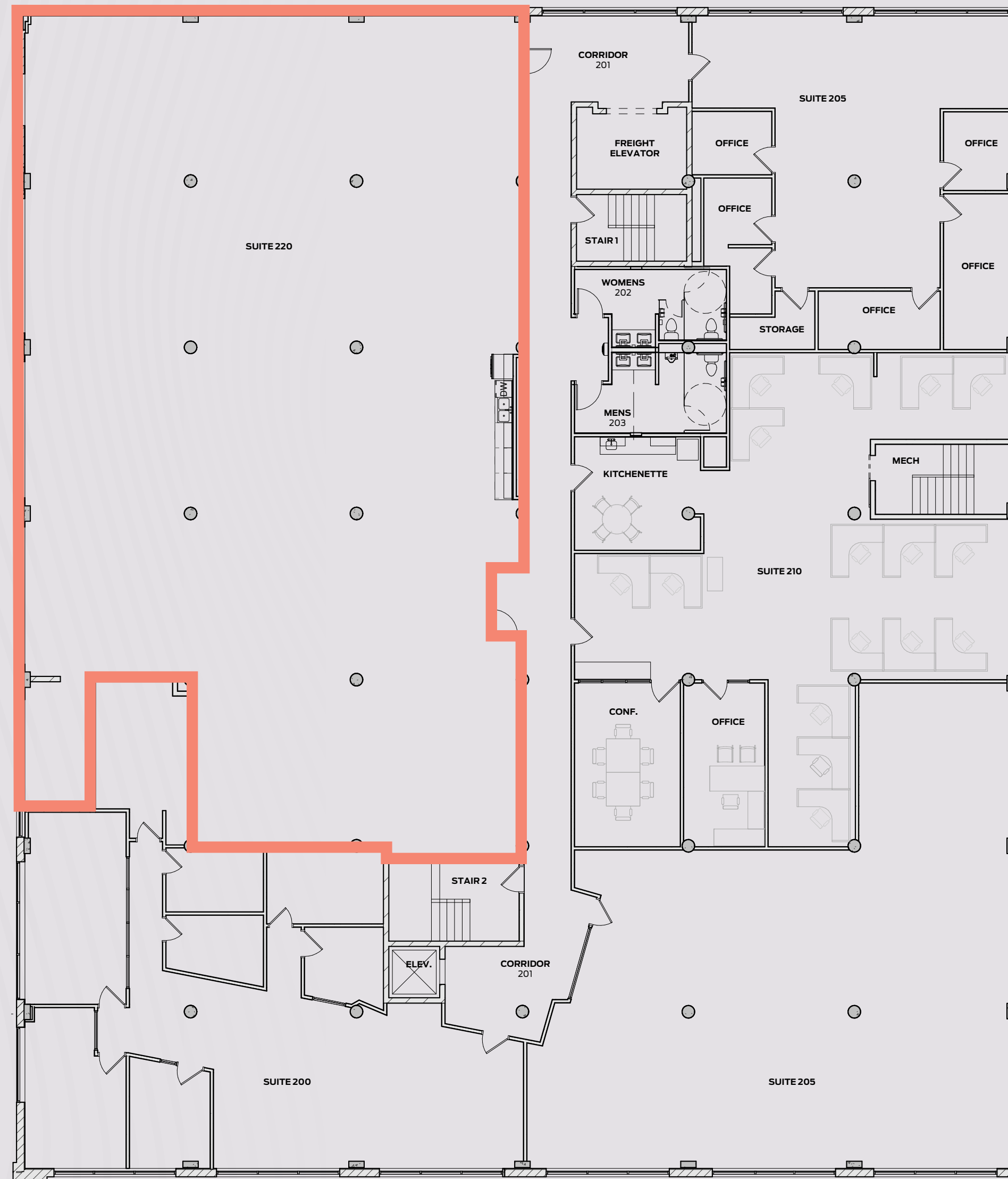




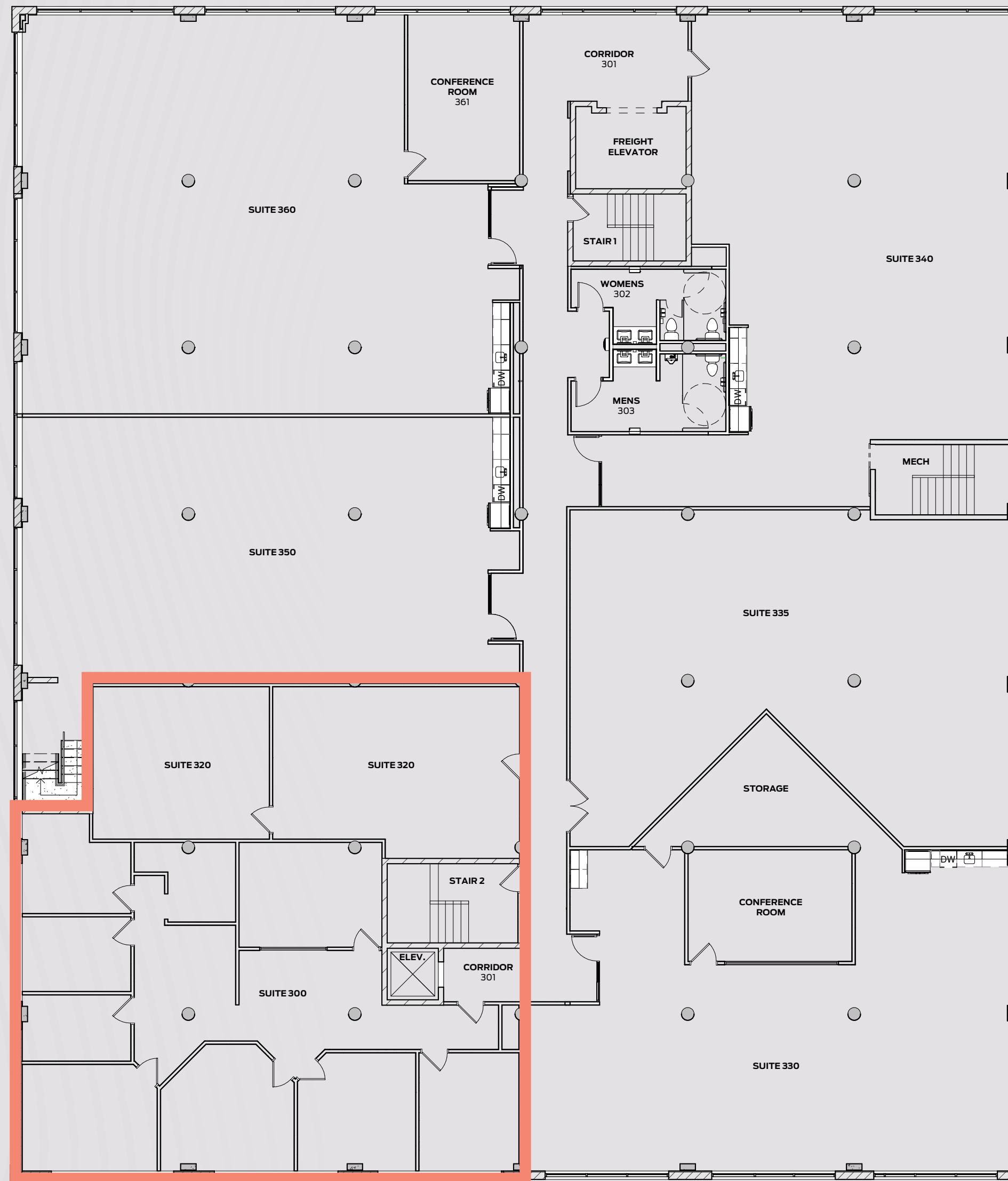
**240 n 5th
street
suite 200**
2,582 SQ FT



**240 n 5th
street
suite 220**
6,244 SQ FT



**240 n 5th
street
suite 300**
3,892 SQ FT



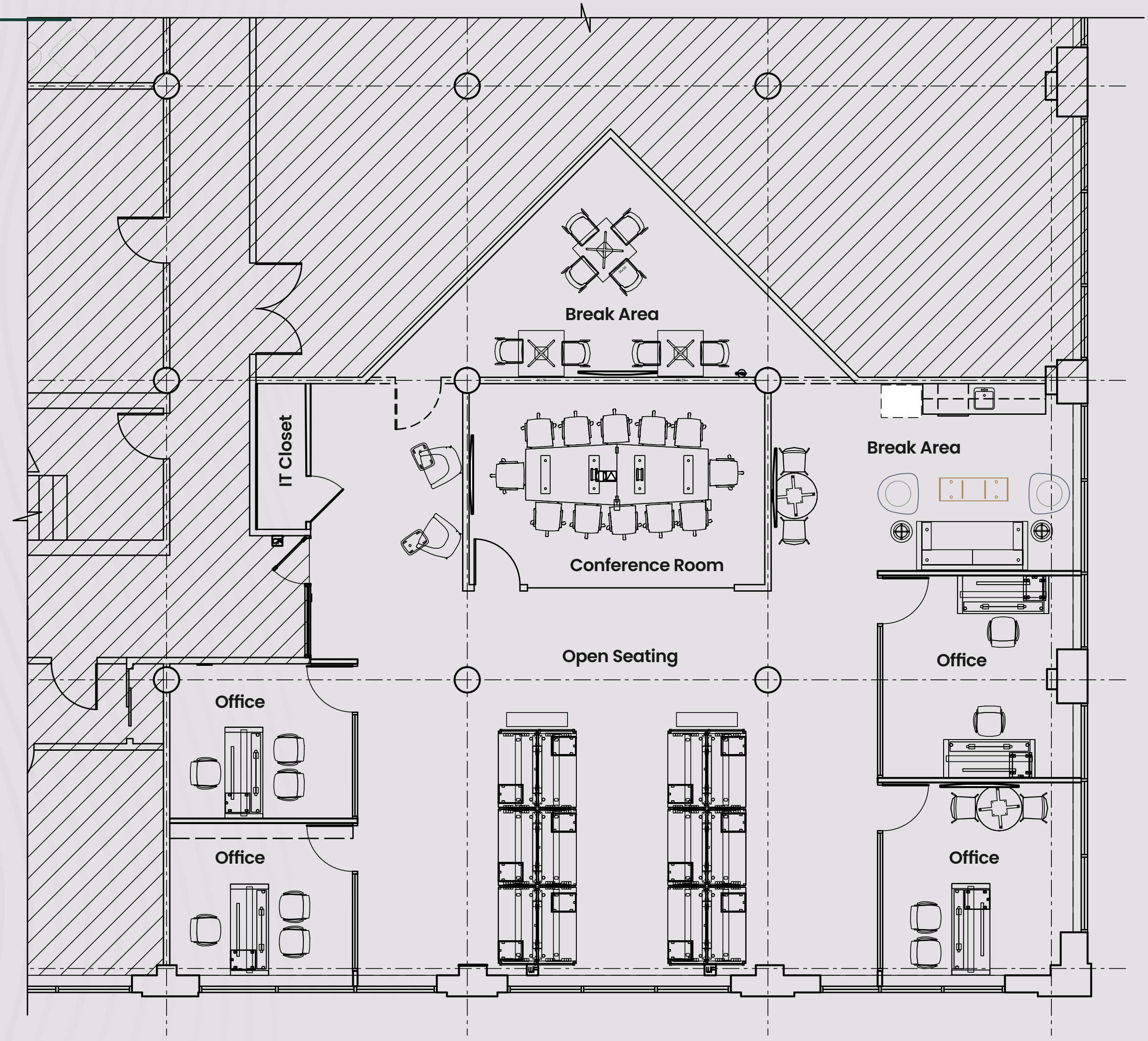
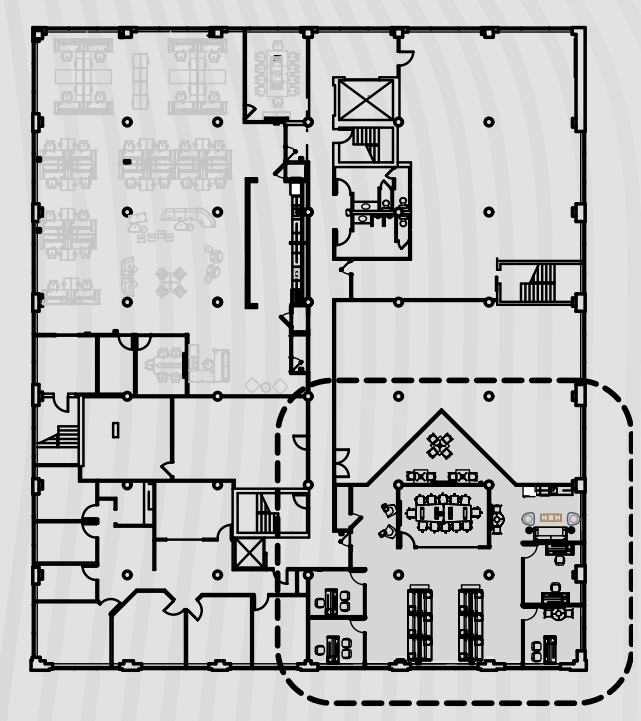


click to view virtual tour

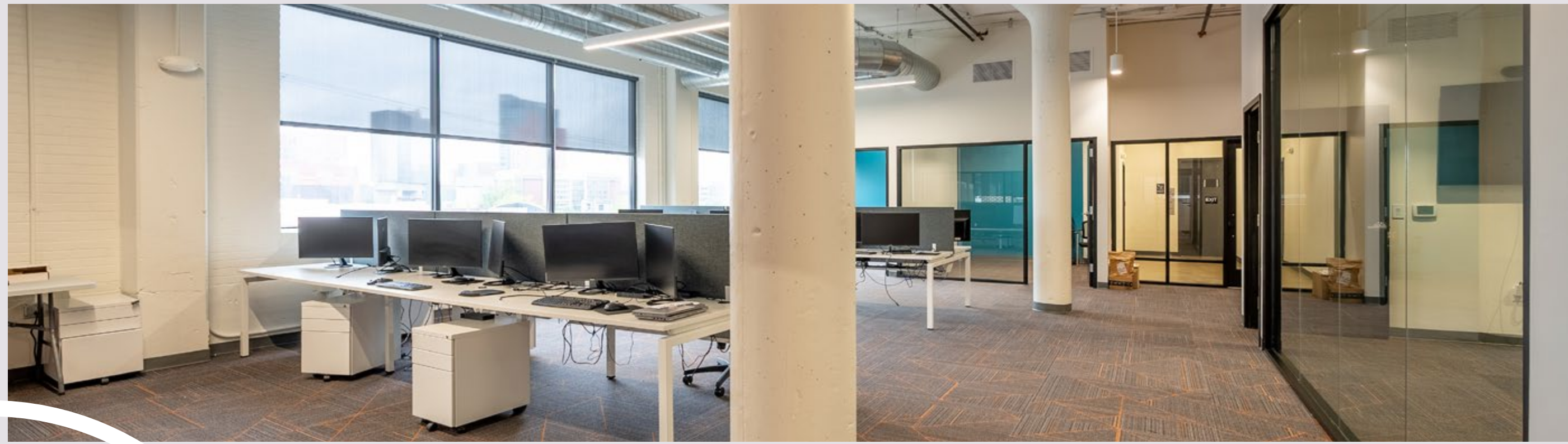
240 n 5th street suite 330

2,795 SQ FT

building key



suite 330
2,795 SQ FT



**collin
wheeler**

First Vice President
+1 614 430 5050
collin.wheeler@cbre.com

**aaron
duncan**

First Vice President
+1 614 430 5090
aaron.duncan@cbre.com



CBRE



©2023 CBRE, Inc. All rights reserved. This information has been obtained from sources believed reliable, but has not been verified for accuracy or completeness. You should conduct a careful, independent investigation of the property and verify all information. Any reliance on this information is solely at your own risk. CBRE and the CBRE logo are service marks of CBRE, Inc. All other marks displayed on this document are the property of their respective owners, and the use of such logos does not imply any affiliation with or endorsement of CBRE. Photos herein are the property of their respective owners. Use of these images without the express written consent of the owner is prohibited. PMStudio_May2023