

OFFICE SPACE FOR LEASE

430 PARK AVENUE
HIGHLAND PARK, IL

JAMESON.

STEVEN GOLDSTEIN
SENIOR VICE PRESIDENT
312.840.9002
STEVE@CHICAGOBROKER.COM



EXECUTIVE SUMMARY



BUILDING SIZE

26,800 SF

SPACE AVAILABLE

1,769 SF (SUITE 2C)

1,831 SF (SUITE 3B)

2,324 SF (SUITE 3A)

ZONING

B-5

CAM

\$7.56 PSF

TAXES

\$4.18 PSF

FOR LEASE:

\$25 - 30/SF MODIFIED GROSS

PROPERTY DESCRIPTION

The offices at 430 Park Avenue are ideally situated in downtown Highland Park close to the Metra, shops, restaurants and a short walk to Lake Michigan. This boutique office building offers a mix of high quality second generation office spaces providing a mix of private offices and open floor plans to suit many uses. Ownership is willing to provide build-outs for qualified long term tenants.

Contact us today to schedule a tour or discuss your needs.

AREA & TRANSPORTATION HIGHLIGHTS:

EASY ACCESS TO TO PUBLIC TRANSPORTATION WITH THE FOLLOWING TRANSIT STOPS NEARBY:

HIGHLAND PARK STATION (UNION PACIFIC NORTH LINE) - 1 MIN DRIVE

HIGHWOOD STATION (UNION PACIFIC NORTH LINE) - 3 MINUTE DRIVE

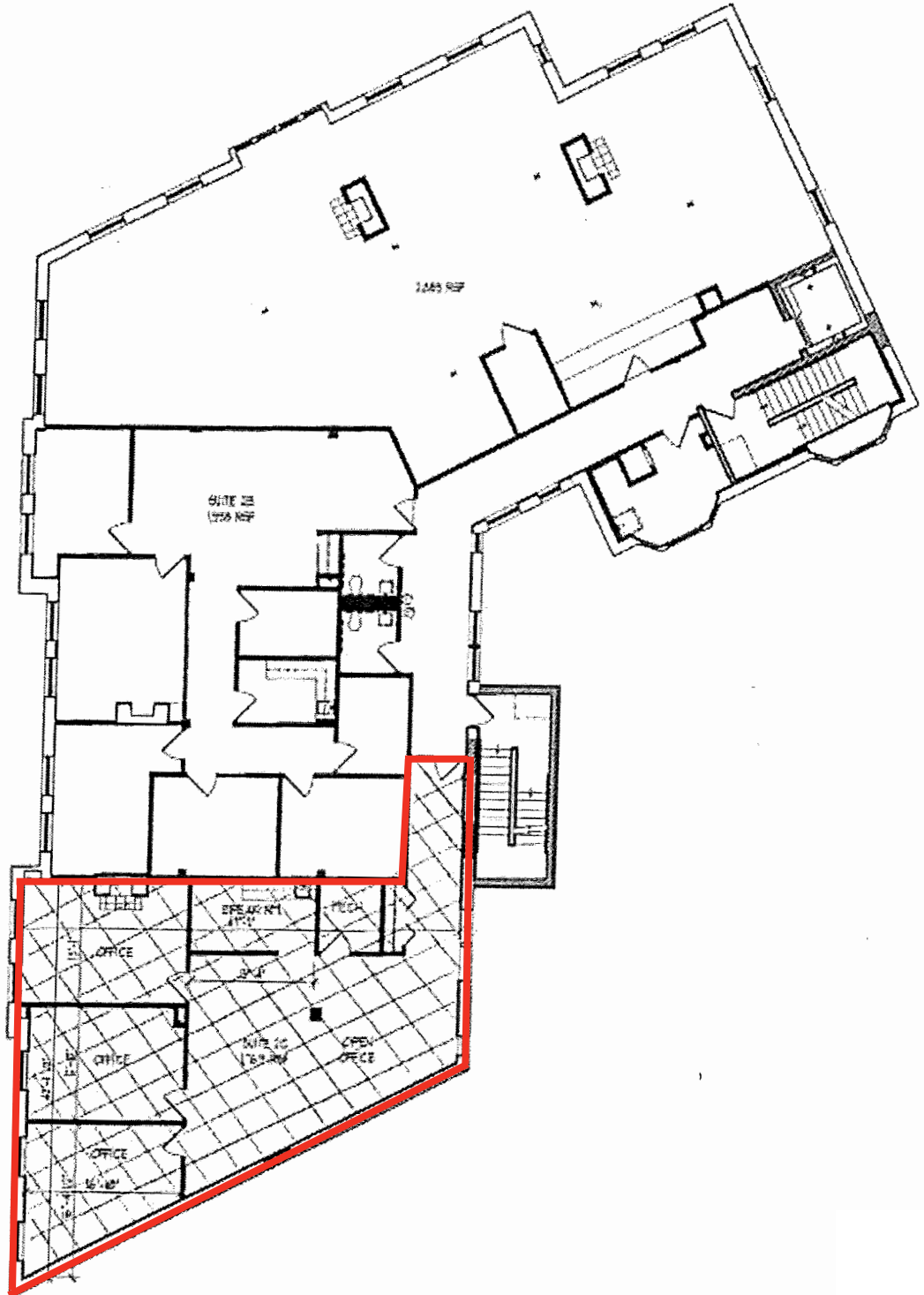
CHICAGO O'HARE INTERNATIONAL - 31 MINUTE DRIVE

CHICAGO MIDWAY INTERNATIONAL - 46 MINUTE DRIVE

AVAILABLE SUITE 2C - 1,769 SF

430 PARK AVENUE

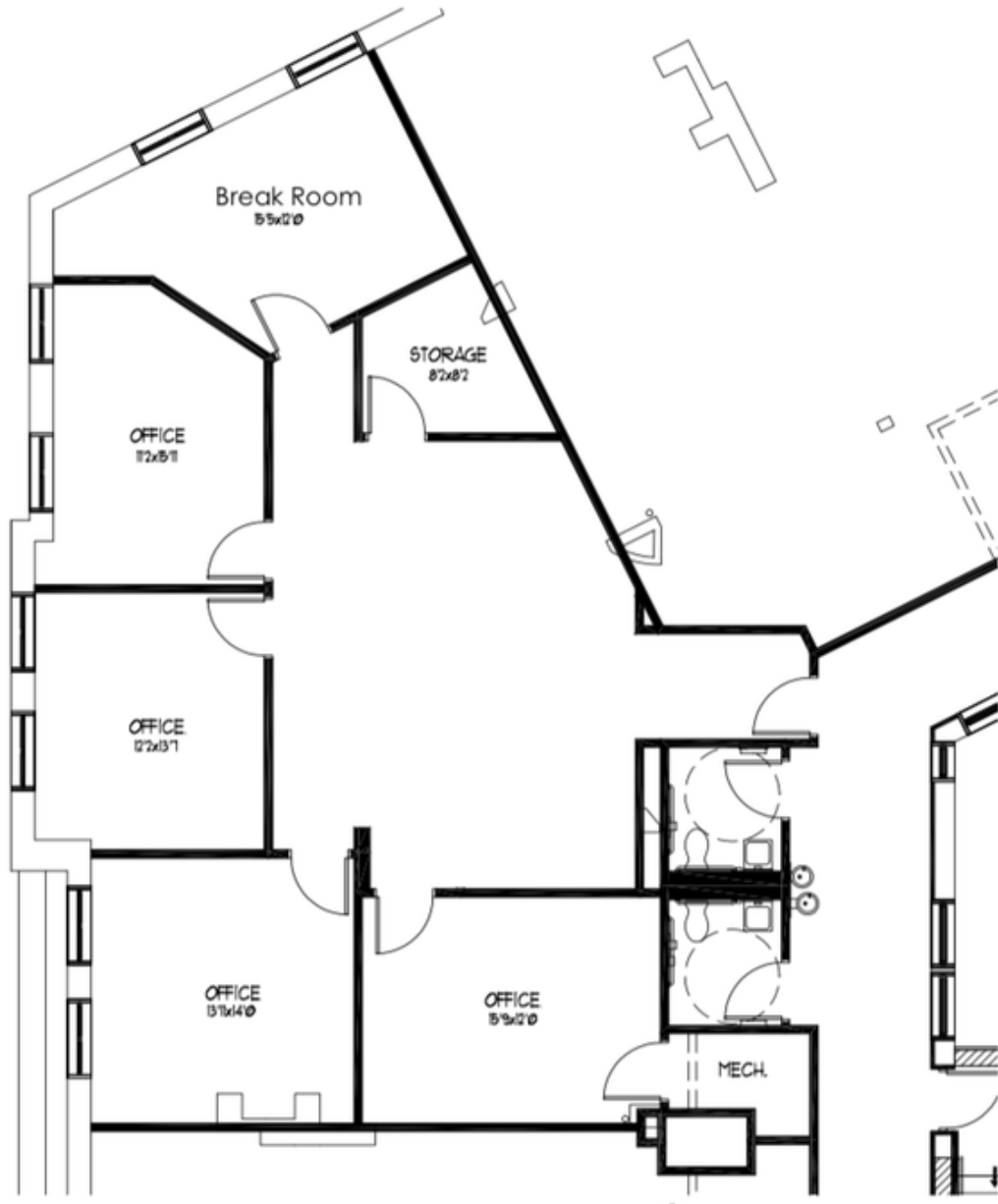
HIGHLAND PARK, IL



AVAILABLE SUITE 3B - 1,831 SF

430 PARK AVENUE

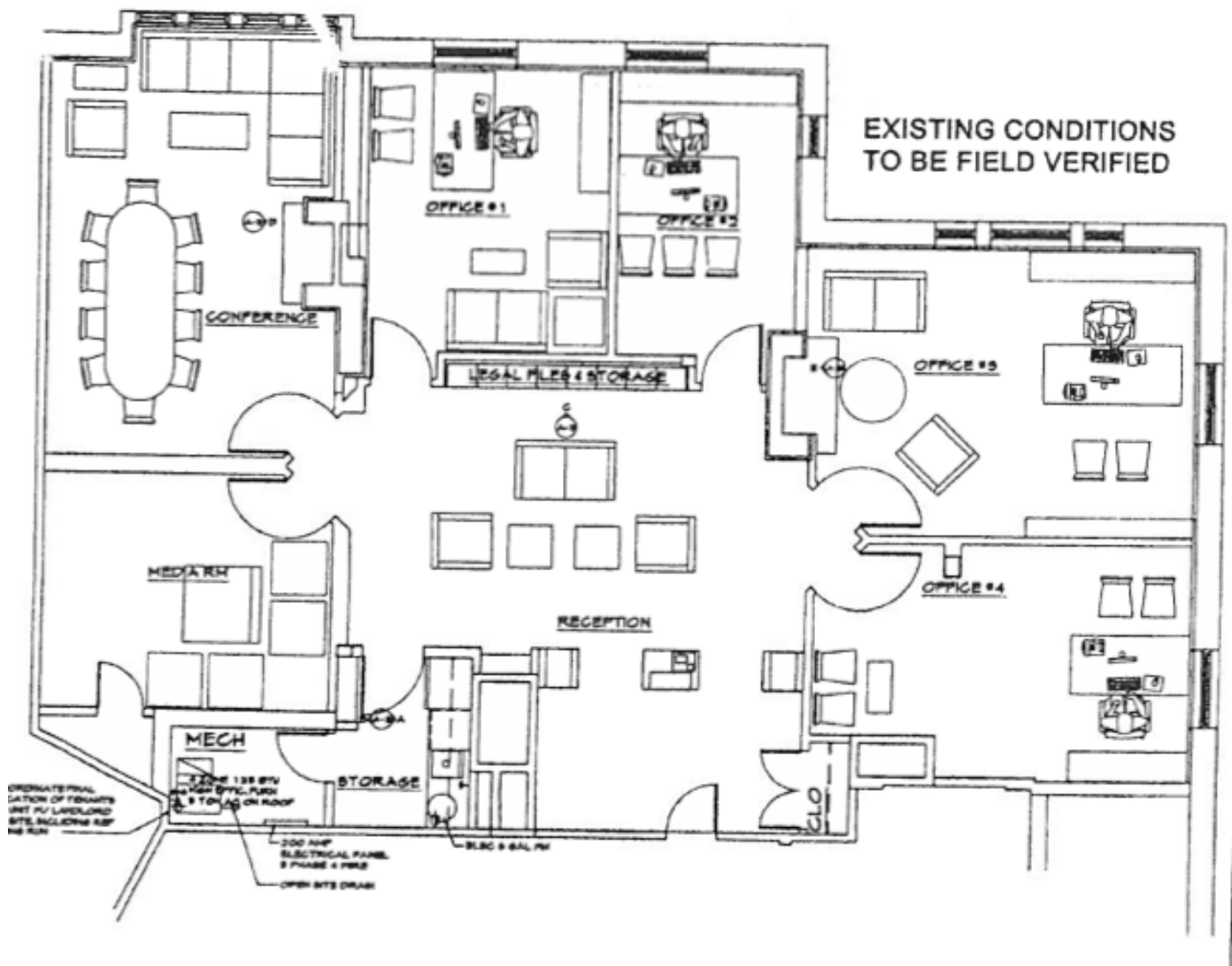
HIGHLAND PARK, IL



AVAILABLE SUITE 3A - 2,324 SF

430 PARK AVENUE

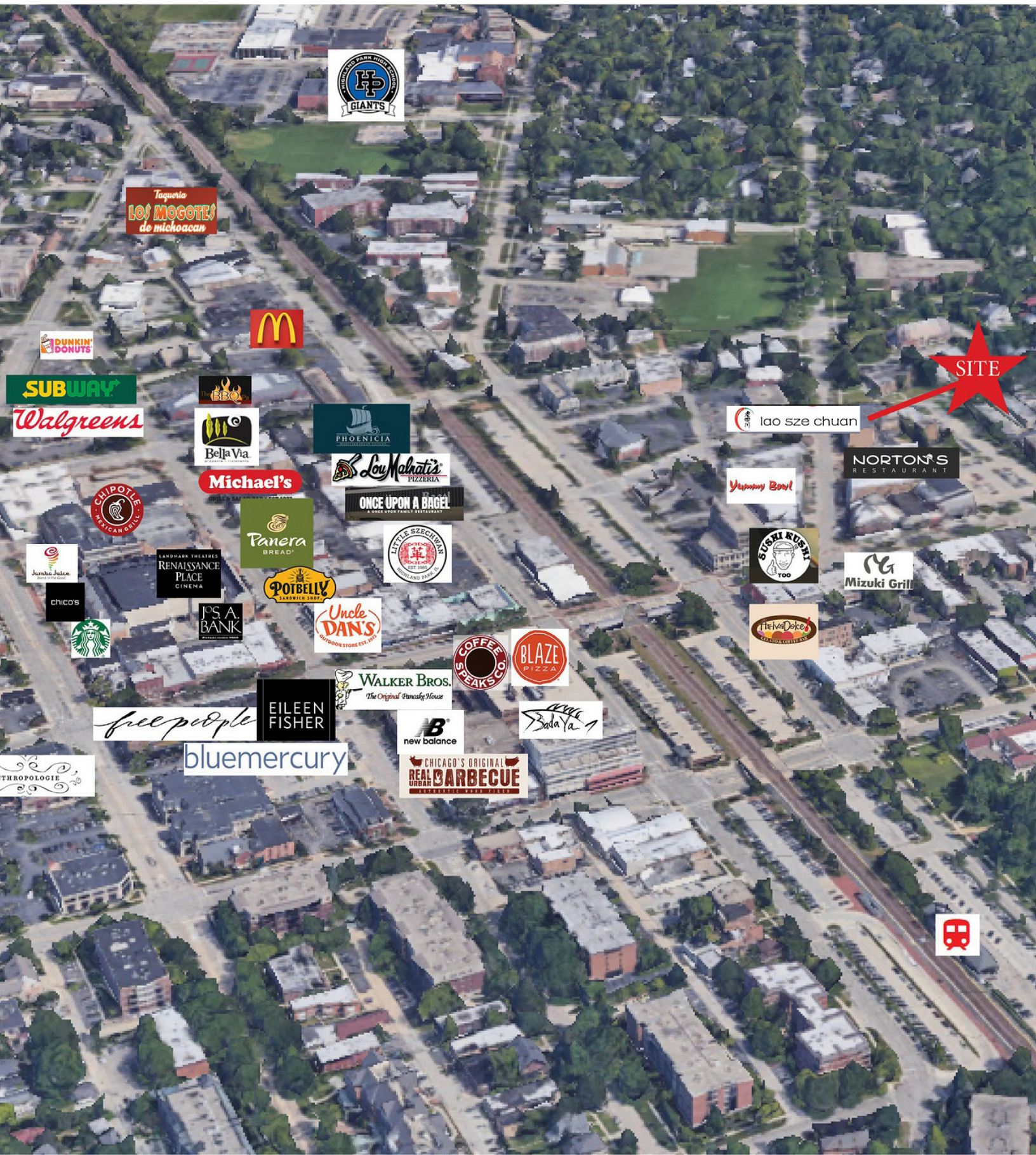
HIGHLAND PARK, IL



RETAIL MAP

430 PARK AVENUE

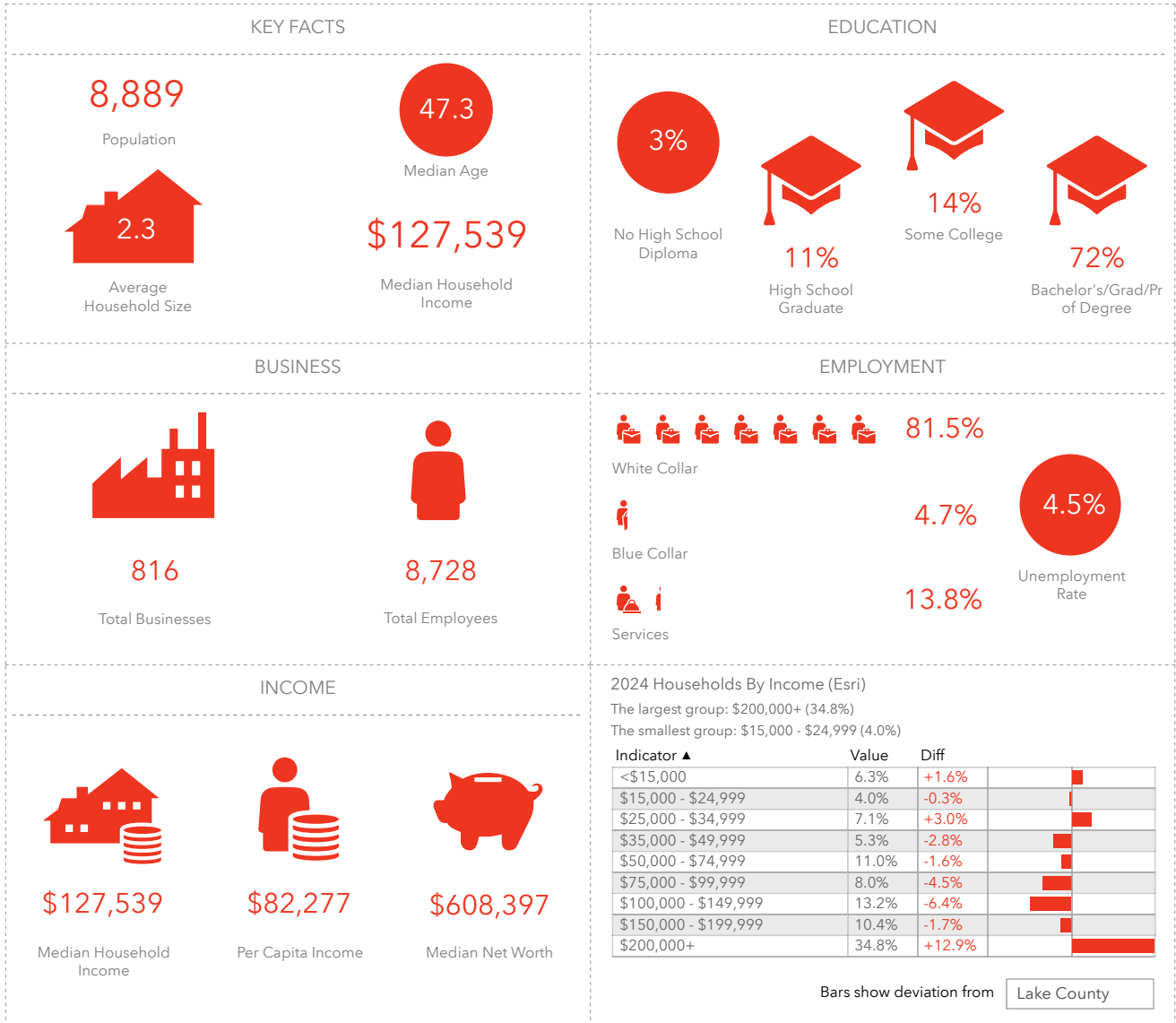
HIGHLAND PARK, IL



DEMOGRAPHIC INSIGHTS

430 PARK AVENUE

HIGHLAND PARK, IL



This infographic contains data provided by Esri, Esri-Data Axle. The vintage of the data is 2024, 2029.



JAMESON.

STEVEN GOLDSTEIN
SENIOR VICE PRESIDENT

312.840.9002
STEVE@CHICAGOBROKER.COM