



C O R P O R A T E  
C E N T R E



**NEWMARK**

1320 & 1390 | Willow Pass Road | Concord, CA

 **SIERRA PACIFIC**  
PROPERTIES, INC

# PROJECT HIGHLIGHTS



## **New Ownership Reimagining!**

Building renovation will include state-of-the-art conference center, fitness center, lobbies, common areas and more!



## **Project Consists of Two Class A Office Buildings Adjoined by a Serene Courtyard!**

**One** Corporate Centre  
1320 Willow Pass Rd  
7-story  
±136,000 RSF

**Two** Corporate Centre  
1390 Willow Pass Rd  
10-story  
±212,000 RSF



## **Efficient/Flexible Floor Plates With Mount Diablo Views!**

Continuous glass line on a perfectly rectangular floor plate highlights the abundance of natural light and sweeping views of Mount Diablo and the East Bay Foothills.



## **Convenient & Secure Parking!**

Ample surface and structure parking.



## **Freeway Access!**

Optimal freeway access to I-680 and Highway 242.



## **Proximity to Retail!**

The Willows and The Veranda retail centers within close walking distance.



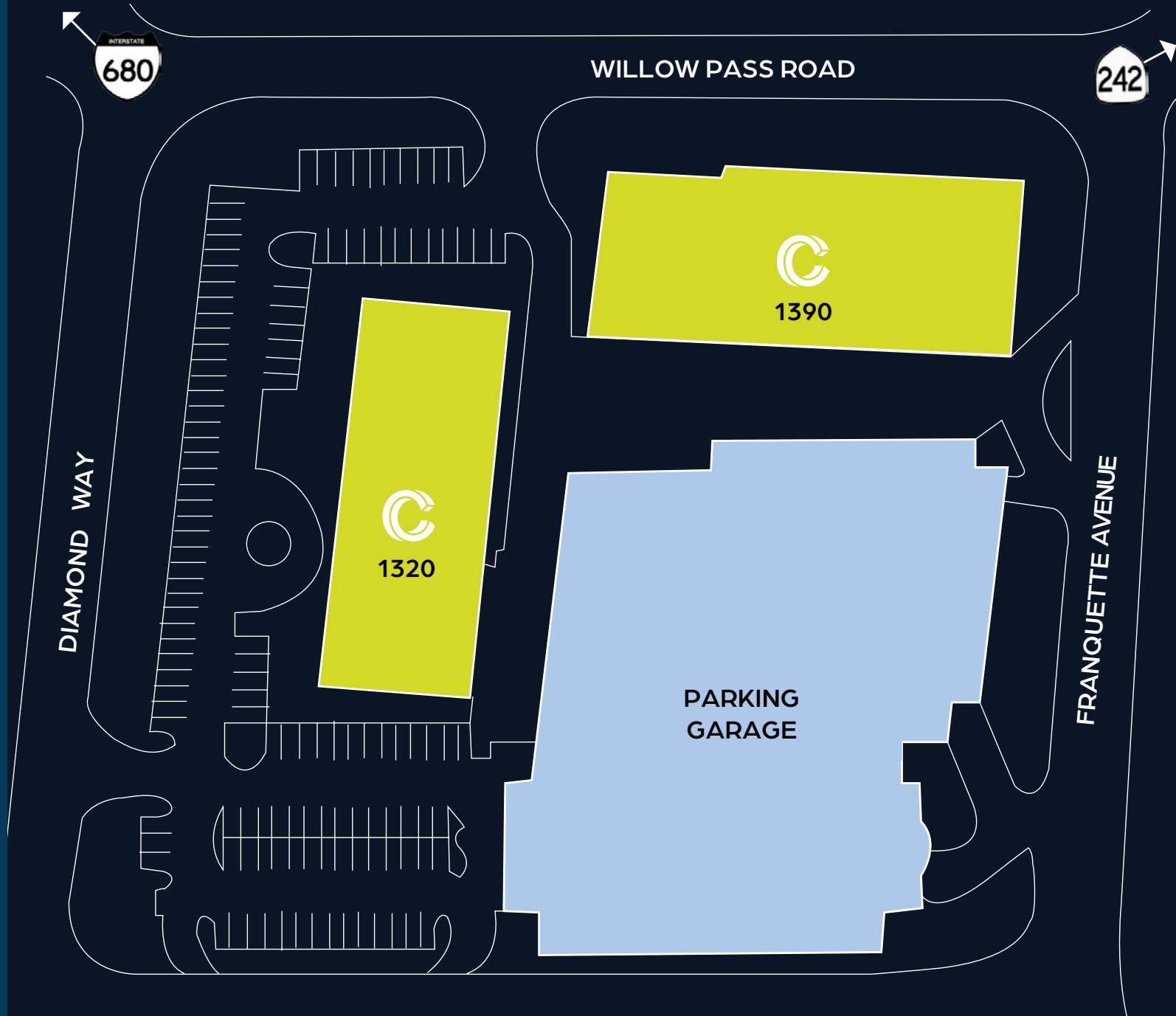
## **Signage Exposure!**

Building top, eyebrow and monument signage available.

# Multiple Ingress & Egress Points to and From The Project



CORPORATE  
CENTRE





# Abundant Amenities With Easy Access







CORPORATE  
CENTRE

## FULL SCALE RENOVATIONS INCLUDE:

Exterior Portal

Lobbies

Exterior Landscaping  
& Hardscape

Conference Center

Tenant Lounge

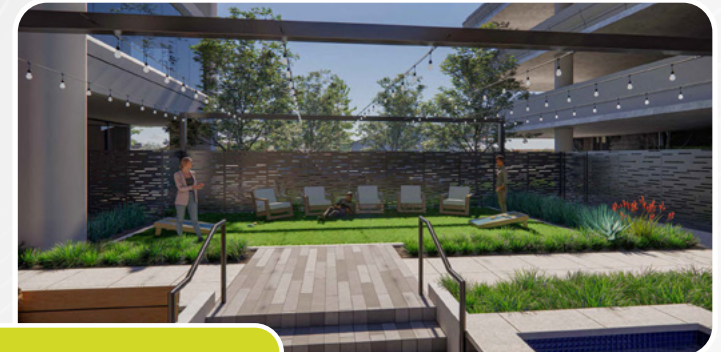
## UPGRADE TO EXISTING:

Fitness Center

Corridors & Elevator  
Lobbies

Restrooms

Secured Parking  
Structure



**IN PROGRESS**











# C O R P O R A T E C E N T R E

**1320 & 1390 | Willow Pass Road | Concord, CA**

**[www.corporatecentre.net](http://www.corporatecentre.net)**

**Danny Bartz**

925.708.8188

[danny.bartz@nmrk.com](mailto:danny.bartz@nmrk.com)

CA RE License #01971819

**Breck Lutz**

925.324.6321

[breck.lutz@nmrk.com](mailto:breck.lutz@nmrk.com)

CA RE License #00936859

**Alex Grell**

510.918.5236

[alex.grell@nmrk.com](mailto:alex.grell@nmrk.com)

CA RE License #01222891

**Alexis Williams**

510.915.2471

[alexis.williams@nmrk.com](mailto:alexis.williams@nmrk.com)

CA RE LICENSE #01892090

**NEWMARK**

The distributor of this communication is performing acts for which a real estate license is required. The information contained herein has been obtained from sources deemed reliable but has not been verified and no guarantee, warranty or representation, either express or implied, is made with respect to such information. Terms of sale or lease and availability are subject to change or withdrawal without notice.  
12/23

 **SIERRA PACIFIC**  
PROPERTIES, INC