

# For Lease Health & Wellness



1300 RIM DR, SUITE A

| FLAGSTAFF, AZ, 86001

This impressive professional space creates a strong first impression in an ideal location, with convenient access to Flagstaff Medical Center. A dedicated walking path connects the leased suite directly to FMC. The space has been fully remodeled and thoughtfully designed for medical or wellness use, offering a light, bright, and inviting environment. The lease is gross. In addition to the net square footage, tenants enjoy access to shared waiting rooms, a kitchen, and laundry facilities. NAZ MLS # 202892





## Property Features

KITCHEN  
LAUNDRY  
BATH

2 OFFICES  
WAITING ROOM  
\$3300 MONTHLY GROSS



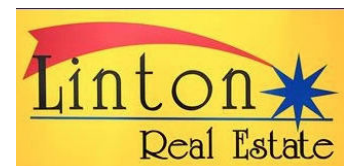
**Susan Weitzman**


BROKER/CCIM LIC: #BR006602000

C: 928-699-3499

susanweitzman@mac.com

www.lintonrealestate.net



<b>Active</b>	<b>List Number:</b> 202892	<b>Address:</b> 1300 N Rim DR A, Flagstaff, AZ 86001	<b>Unit #:</b> A	<b>List Price:</b> \$3,300
	<b>County:</b> Coconino	<b>Cross Street:</b> Fort Valley Rd		<b>Sold Price:</b>
		<b>Property Type:</b> Comm/Industry <b>Region:</b> 10 - North West City <b>Area:</b> 130 - NoHo <b>Year Built:</b> 1982 / <b>APN:</b> 10140-001 <b>Taxes:</b> \$0 / 0 <b>Zoned:</b> <b>ADOM/CDOM:</b> 5/5 <b>Geo Lat:</b> 35.209551 <b>Geo Lon:</b> -111.647586		
<b>Property Sub-Type:</b> Office Building <b>Lease Frequency:</b> <b>Gross SqFt:</b> 711 <b>List Price/SqFt:</b> 4.64 <b>Acres:</b> / <b>Acres:</b> <b>To Show:</b>				
<b>Listing Office:</b> Linton Real Estate				
<b>Legal Description:</b> Forest Hills Medical Condo Unit A (Part Of) <b>Directions:</b> 180 N. Right on W Forest Ave. Right on N Rim Drive. <b>Public Remarks:</b> This impressive professional space creates a strong first impression in an ideal location, with convenient access to Flagstaff Medical Center. A dedicated walking path connects the leased suite directly to FMC. The space has been fully remodeled and thoughtfully designed for medical or wellness use, offering a light, bright, and inviting environment. The lease is gross. In addition to the net square footage, tenants enjoy access to shared waiting rooms, a kitchen, and laundry facilities. <b>Private Remarks:</b> The CCRs show this as a medical or wellness office.				
<b>Construction:</b> One Story <b>Docs on File:</b> Other: Floor Plan <b>Exterior Amenities:</b> <b>Exis Fee/Docs:</b> <b>Freeway Turn Time:</b> 5-9 Min <b>Flood Zone:</b> None <b>General Land Info:</b> <b>Grnd Lease Amt \$:</b> <b>Grnd Lease From:</b> <b>Lease Expiration Date:</b>		<b>Heating:</b> Central <b>Interior Amenities:</b> Laundry <b>Inc/Exp (Annual):</b> <b>Location:</b> Condo. Bldg. <b>Lot Street Imprvmnts:</b> Paved Parking <b>Leases:</b> <b>Management:</b> Owner		
<b>Occupancy:</b> <b>Possession:</b> <b>Roof:</b> <b>Util Pd by Tenant:</b> <b>Terms of Sale:</b> <b>To Show:</b> <b>Utilities:</b> <b>Zoning - City:</b> <b>Zoning - County:</b>				
<b>Interior Amenities:</b> Laundry				
<b>Agreement Type:</b> Exclusive Authorization to Sell <b>Owner/Agent:</b> No		<b>Expire Date:</b> 06/03/2026 <b>Listing Agreement Date:</b> 12/15/2025 <b>Listing Agreement Date (Historical):</b>		
<b>Status Change Date:</b> 12/15/2025				

LO: Linton Real Estate 928-779-4411 Fax: 928-779-5935

LA: Susan Weitzman 928-779-4411 [susanweitzman@mac.com](mailto:susanweitzman@mac.com) BR006602000

LC558926000

Information is deemed to be reliable, but is not guaranteed. © 2025 [MLS](#) and [FBS](#). Prepared by NA MLS on Saturday, December 20, 2025 5:14 AM. The information on this sheet has been made available by the NA MLS and may not be the listing of the provider.



Photos for MLS # 202892

1300 N Rim DR A, Flagstaff, AZ 86001

\$3,300

Entrance



Courtyard



Courtyard



Waiting Room

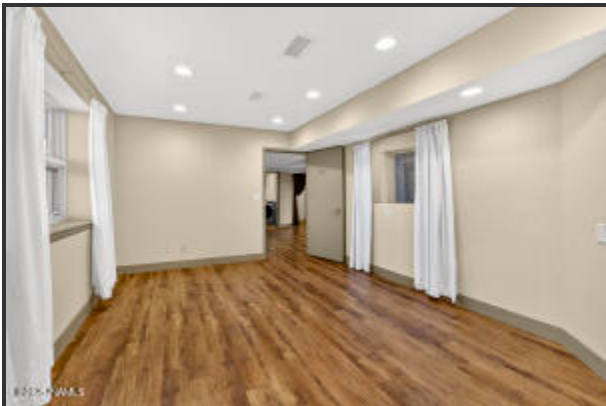


Courtyard

Waiting Room



Office 1



MLS # 202892

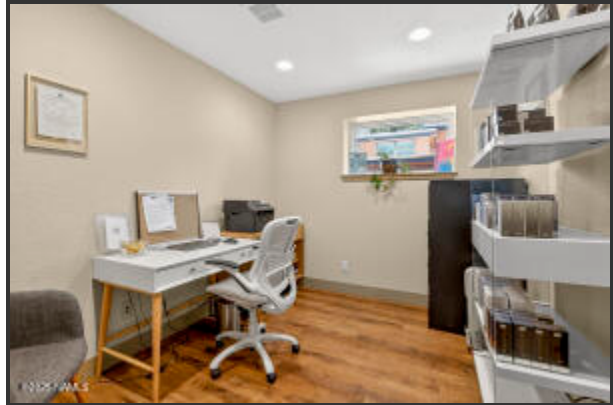
1300 N Rim DR A, Flagstaff, AZ 86001

\$3,300

Office 1



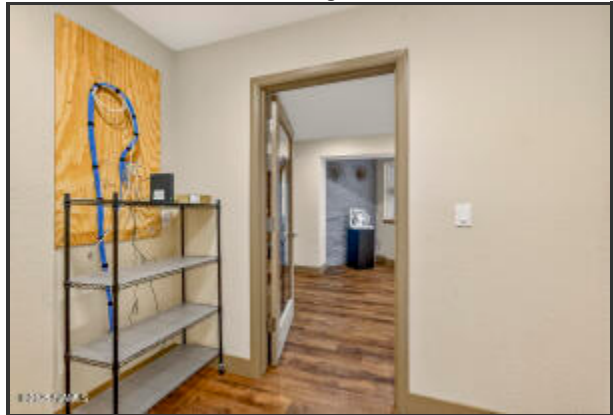
Office 2



Storage



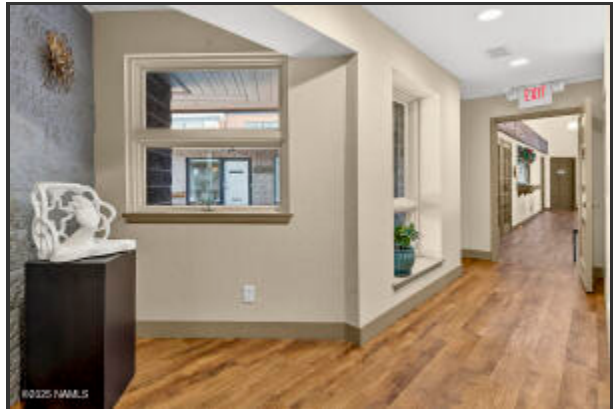
Storage



Common Area



Common Area



MLS # 202892

1300 N Rim DR A, Flagstaff, AZ 86001

\$3,300

Bathroom

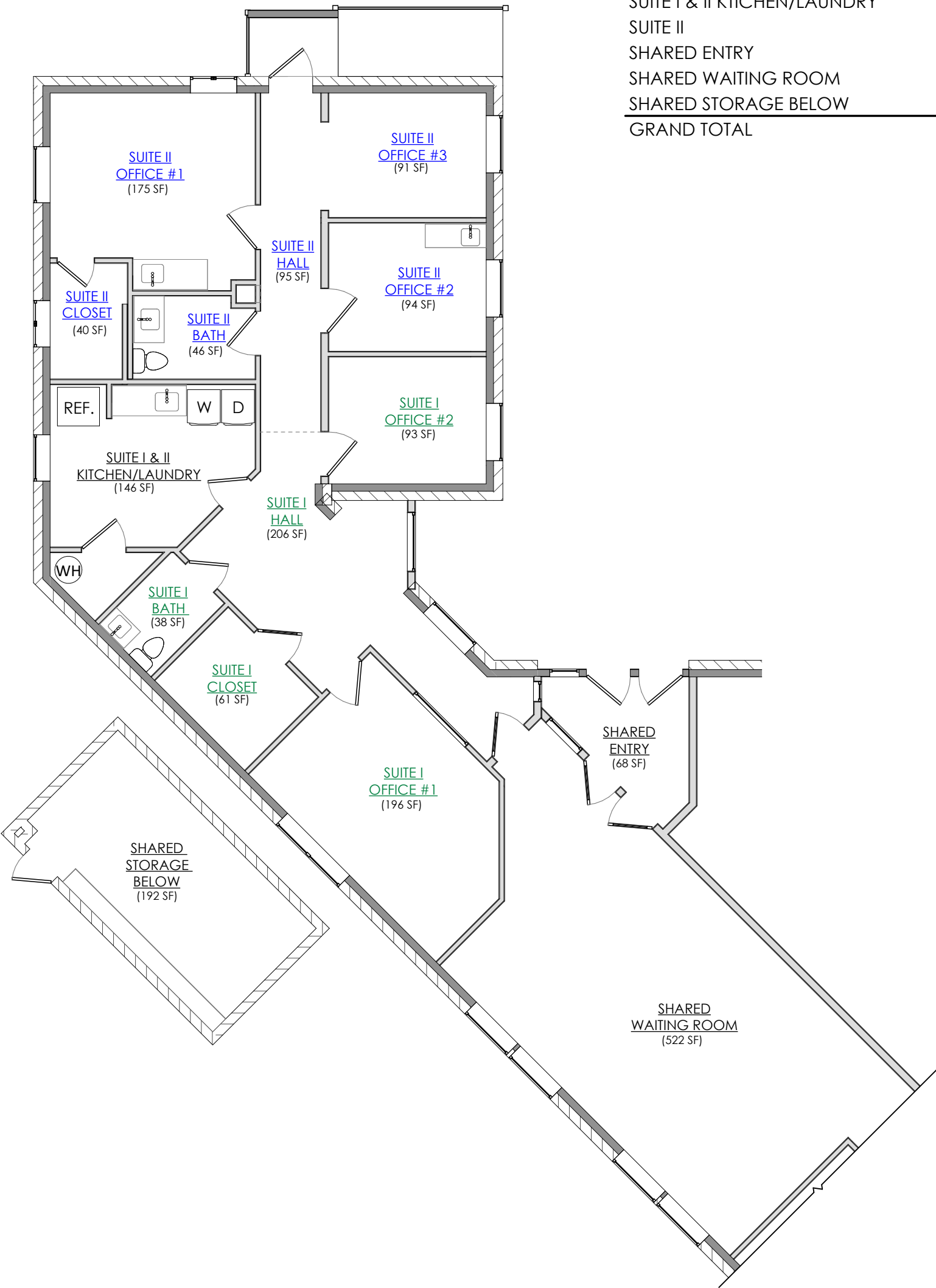


Shared Kitchen and Laundry



Shared Kitchen Laundry





SQUARE FOOTAGE

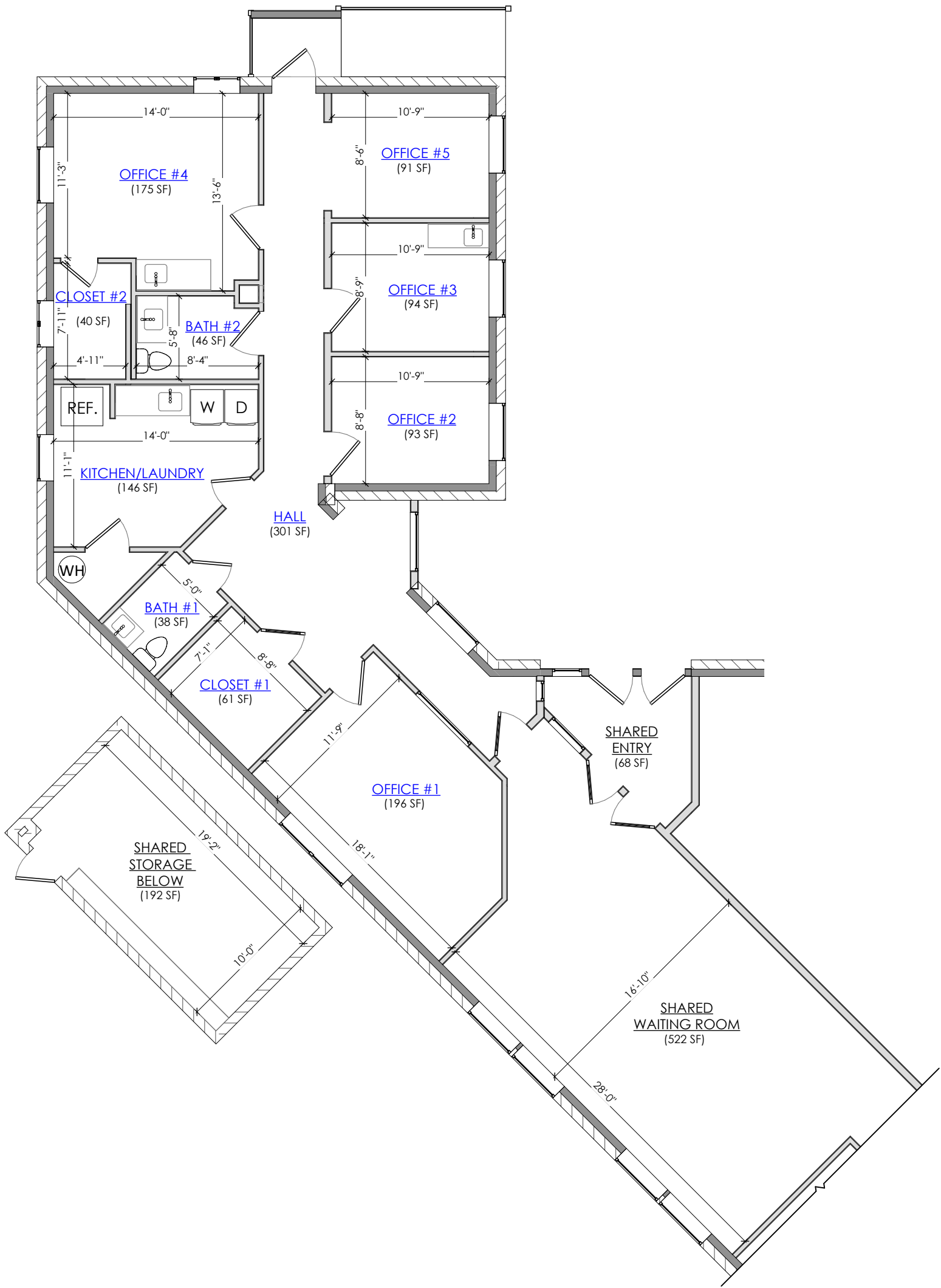
SUITE I	707 SF
SUITE I & II KTICHEN/LAUNDRY	200 SF
SUITE II	654 SF
SHARED ENTRY	38 SF
SHARED WAITING ROOM	302 SF
SHARED STORAGE BELOW	115 SF
GRAND TOTAL	2016 SF

1 FLOOR PLAN  
A 1/8" = 1'-0"

OFFICE BUILDING #A - LAYOUT

1300 N. RIM DRIVE  
FLAGSTAFF, ARIZONA 86001





1 FLOOR PLAN  
A 1/8" = 1'-0"