

MIDTOWN, NEW YORK, NY

244 MADISON AVENUE

Southwest Corner of 38th Street

VENTED RESTAURANT FOR LEASE

MØNSTRÜCK

STORE
FOR RENT

DANA COMMERCIAL
GARY DANA | gdana@elliman.com
Licensed Associate Real Estate Broker
516.946.7207
CALL OR TEXT
To view properties from
Douglas Elliman
REAL ESTATE



CLICK FOR VIDEO TOUR

THE DANA COMMERCIAL TEAM
EST. 1911
Douglas Elliman
REAL ESTATE

PROPERTY DETAILS

PREMISES

Ground Floor: 2,500 square feet

Mezzanine: 2,000 square feet

FRONTAGE

25 Foot Corner on Madison Avenue

POSSESSION

Immediate

RENT

\$25,000 per month

CEILINGS

20 Feet

TENANT

Previously Moonstruck Restaurant

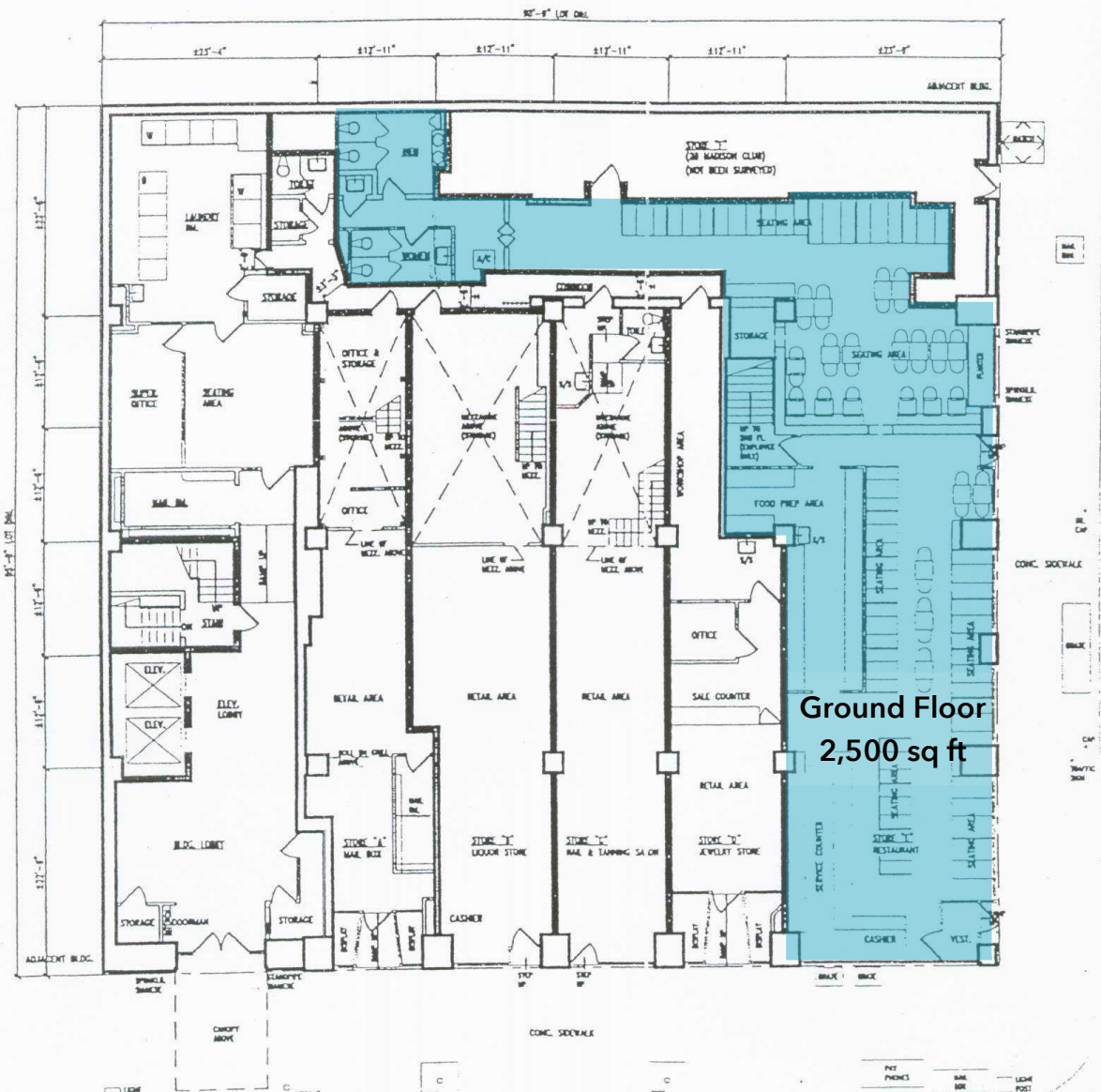
FEATURES

- On the corner of Madison Ave and 38th Street
- Fully Vented Restaurant
- Large kitchen in Mezzanine with Hood; 400 Amp Electric
- Beautiful glass frontage and 15 foot ceilings
- High foot traffic
- Long Lease Available
- Serves office and residential customers
- Located in Major apartment building
- Opportunity for substantial catering/delivery/take out

244 MADISON AVENUE

SOUTHWEST CORNER OF 38TH STREET





Exclusively Represented by:

THE DANA COMMERCIAL TEAM

At Douglas ELLIMAN Real Estate

GARY DANA 212.692.6183 CELL: 516.946.7207
 RICK DANA 212.692.6182 CELL: 917.952.0624
 CHRIS DANA 212.455.4721 CELL: 516.761.4317

gdana@elliman.com
rdana@elliman.com
cdana@elliman.com

© 2017 DOUGLAS ELLIMAN REAL ESTATE. ALL MATERIAL PRESENTED HEREIN IS INTENDED FOR INFORMATION PURPOSES ONLY. WHILE THIS INFORMATION IS BELIEVED TO BE CORRECT, IT IS REPRESENTED SUBJECT TO ERRORS, OMISSIONS, CHANGES OR WITHDRAWAL WITHOUT NOTICE. ALL PROPERTY INFORMATION, INCLUDING, BUT NOT LIMITED TO SQUARE FOOTAGE, ROOM COUNT, NUMBER OF BEDROOMS AND THE SCHOOL DISTRICT IN PROPERTY LISTINGS SHOULD BE VERIFIED BY YOUR OWN ATTORNEY, ARCHITECT OR ZONING EXPERT. IF YOUR PROPERTY IS CURRENTLY LISTED WITH ANOTHER REAL ESTATE BROKER, PLEASE DISREGARD THIS OFFER. IT IS NOT OUR INTENTION TO SOLICIT THE OFFERINGS OF OTHER REAL ESTATE BROKERS. WE COOPERATE WITH THEM FULLY. EQUAL HOUSING OPPORTUNITY.



THE DANA COMMERCIAL TEAM
Douglas Elliman EST. 1911
 REAL ESTATE