

FOR SALE OR LEASE

±9,984 SF INDUSTRIAL BUILDING

13810 Bentley Pl, Cerritos, CA 90703

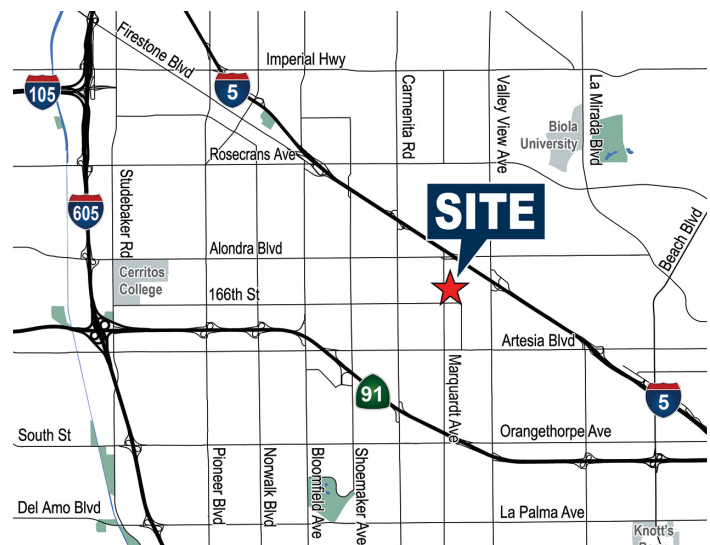
Voit

REAL ESTATE SERVICES



PROPERTY FEATURES

- Two (2) Ground Level Doors
- 16' - 18' Warehouse Clearance (Verify)
- Small Fenced Yard
- Reception, 4 Offices, Conference Room, 2 Restrooms
- Desirable Cerritos Location
- Close Proximity to 5 & 91 Freeways
- Ownership is Installing New Roof



Note: Measurements and sizes are approximate and are subject to change.

ZAC KOLANDER

Senior Associate

Lic #02096759

(714) 935-2301

zkolander@voitco.com

SELDEN MCKNIGHT

Vice President | Partner

Lic. #02027919

(714) 935-2323

smcknight@voitco.com

STAN S. KWAK

Senior VP | Partner

Lic. #01824776

(714) 935-2327

skwak@voitco.com

Voit

REAL ESTATE SERVICES

CLIENT
RESOURCE GROUP

2400 E. Katella Avenue, Suite 750
Anaheim, CA 92806

www.VoitCo.com

FOR SALE OR LEASE

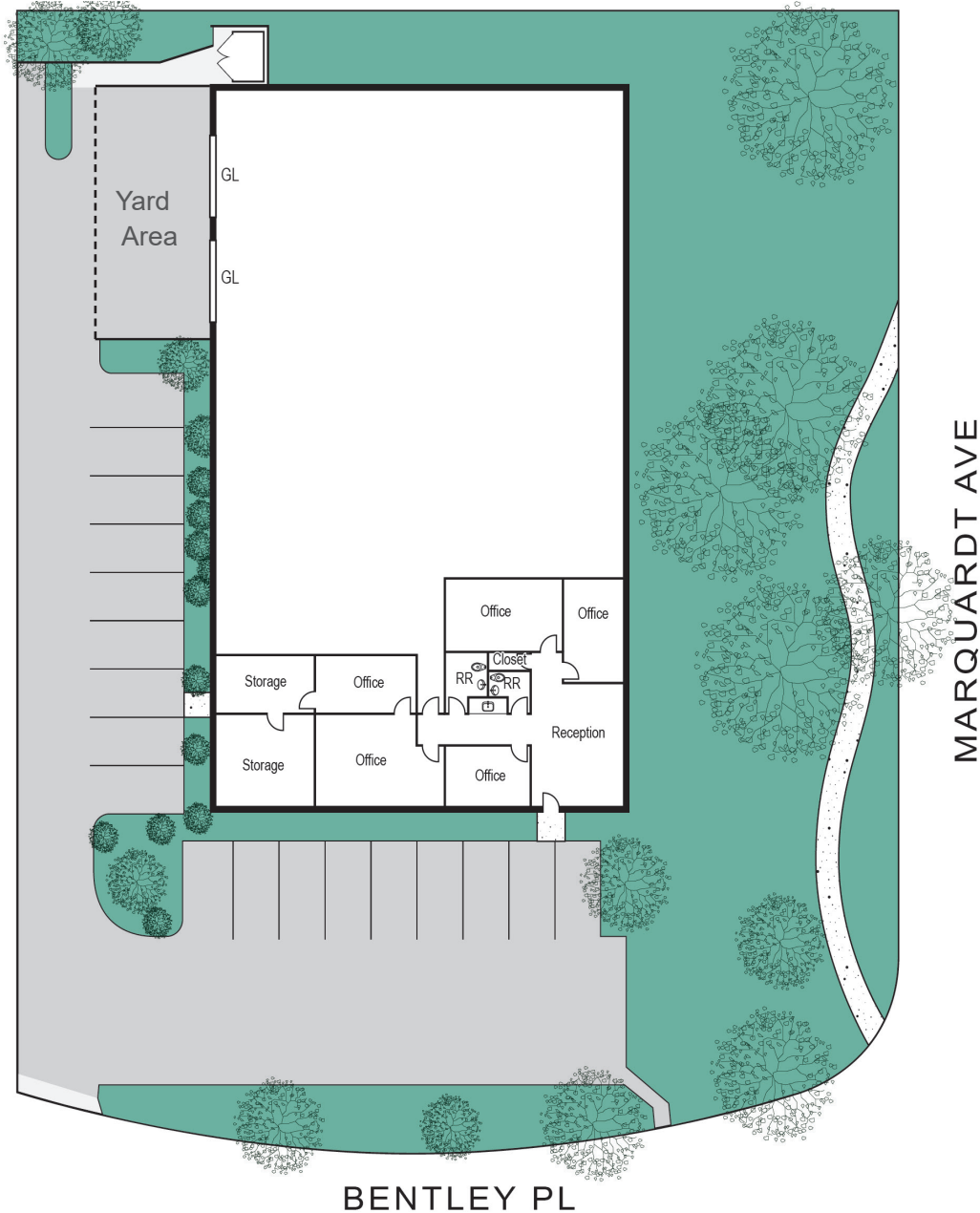
±9,984 SF INDUSTRIAL BUILDING

13810 Bentley Pl, Cerritos, CA 90703

Voit

REAL ESTATE SERVICES

SITE PLAN



NOT TO SCALE

Note: Measurements and sizes are approximate and are subject to change.

ZAC KOLANDER
Senior Associate
Lic #02096759
(714) 935-2301
zkolander@voitco.com

SELDEN MCKNIGHT
Vice President | Partner
Lic. #02027919
(714) 935-2323
smcknight@voitco.com

STAN S. KWAK
Senior VP | Partner
Lic. #01824776
(714) 935-2327
skwak@voitco.com

Voit

REAL ESTATE SERVICES

CLIENT
RESOURCE GROUP

2400 E. Katella Avenue, Suite 750
Anaheim, CA 92806
www.VoitCo.com