

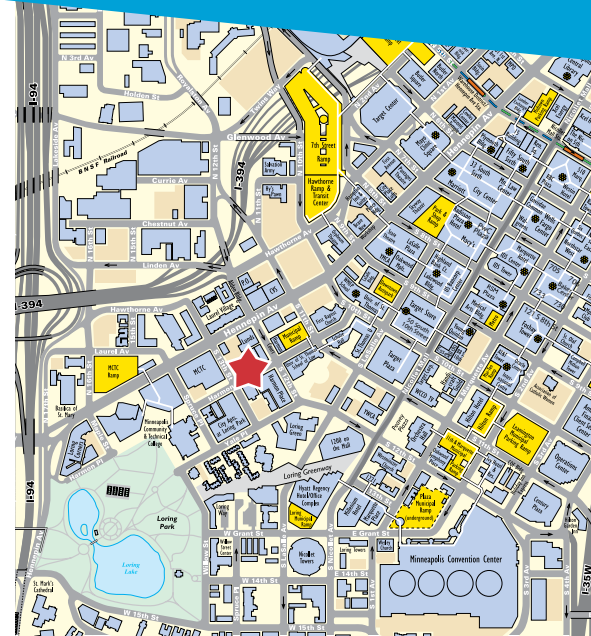
FOR LEASE > OFFICE SPACE

# Harmon Court

1128 Harmon Place | Minneapolis, MN 55403



Accelerating success.



Harmon Court is a unique, vibrant office building, offering creative, high-image suites. Hardwood floors, a sweeping staircase, and eclectic common areas are just a few of the features of this boutique building.

## BUILDING AMENITIES

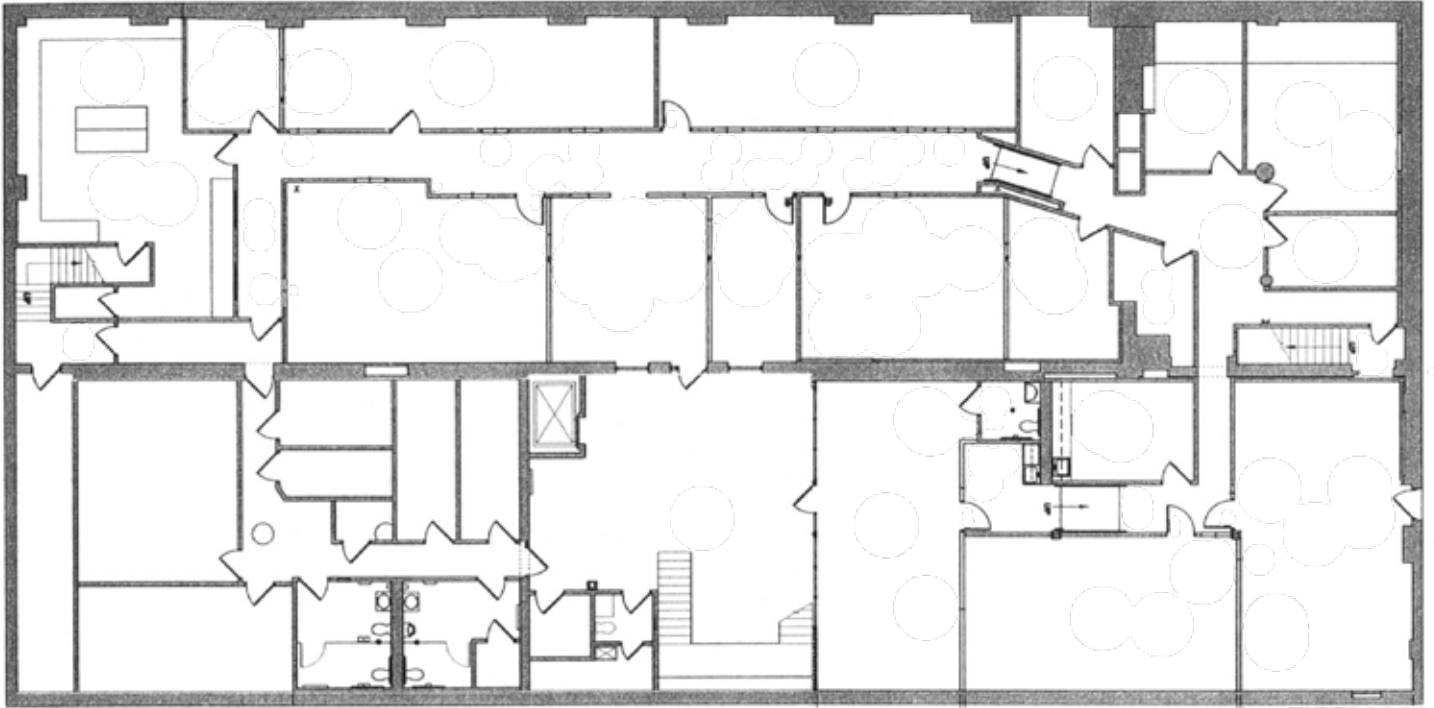
- > Creative, high-image office space
- > Interior features include hardwood floors, skylights and charming architectural details
- > Easy access to I-394, I-94 and I-35W
- > Attached parking ramp
- > Located close to Hennepin Avenue and several public transit options
- > Conveniently close to Lunds/Byerlys on Hennepin Avenue
- > Nearby restaurants: Buca di Beppo, Davanni's, Subway, Eli's, Joe's Garage, The Butcher and the Boar, Café Lurcat, 4 Bells, Dunn Bros Coffee
- > Located in close proximity to University of St. Thomas campus and the green spaces of Loring Park
- > Walking distance to numerous area attractions and amenities

## CONTACT US

Jim Kenney  
952 897 7822  
[jim.kenney@colliers.com](mailto:jim.kenney@colliers.com)

Just two blocks off Nicollet Mall, skyway-connected Harmon Court has the convenience of downtown and the neighborhood charm of Loring Park.

## HARMON COURT > LOWER LEVEL FLOOR PLAN



### AVAILABLE SPACE

Address	1128 Harmon Place Minneapolis, MN 55403
Building Size	31,288 SF
Number of Floors	2
Year Built	1910
Parking	Attached parking ramp
Availability	10,000 SF on lower level
Net Rental Rates	\$5.00 PSF Net
2019 Est. CAM & Taxes	\$11.50 PSF

### CONTACT US >

Jim Kenney  
952 897 7822  
[jim.kenney@colliers.com](mailto:jim.kenney@colliers.com)



Accelerating success.