



Investment
Properties
Corporation

F O R L E A S E

POINCIANA PROFESSIONAL PARK CLASS A OFFICE SUITES

📍 Located at the intersection of Golden Gate Parkway & Airport Pulling Road

2590 Golden Gate Parkway | Naples, FL 34105



click here!



Google
Maps

CONTACT (239) 261-3400

Clint Sherwood, CCIM, ext. 179
clint@ipcnaples.com

Tara Stokes, ext. 176
tara@ipcnaples.com

Investment Properties Corporation of Naples
3838 Tamiami Trail North Suite 402
Naples Florida 34103-3586

Tel: 239-261-3400 Fax: 249-261-7579 www.ipcnaples.com

Licensed Real Estate Broker

The statement and figures presented herein, while not guaranteed, are secured from sources we believe authoritative. Subject to prior sale, lease, withdrawal and price change without notice.



**Investment
Properties
Corporation**

POINCIANA PROFESSIONAL PARK

📍 Located at the intersection of Golden Gate Parkway & Airport Pulling Road

2590 Golden Gate Parkway | Naples, FL 34105



<u>SUITE #</u>	<u>SQUARE FOOTAGE</u>	<u>BASE RENT</u>	<u>EST. 2024 CAM</u>	<u>AVAILABILITY</u>
103-104	965.5 SF	\$28 NNN	\$12.76 PSF	1/01/2025

Beautiful professional office park in wooded parcel located at the intersection of Golden Gate Parkway and Airport Pulling Road. Two miles from I-75 interchange and four miles from 5th Avenue South. Single-story building offers convenient, direct access. Newly-completed renovations, interior and exterior. Efficient layout. Walking path. Outdoor lunch areas.





**Investment
Properties
Corporation**

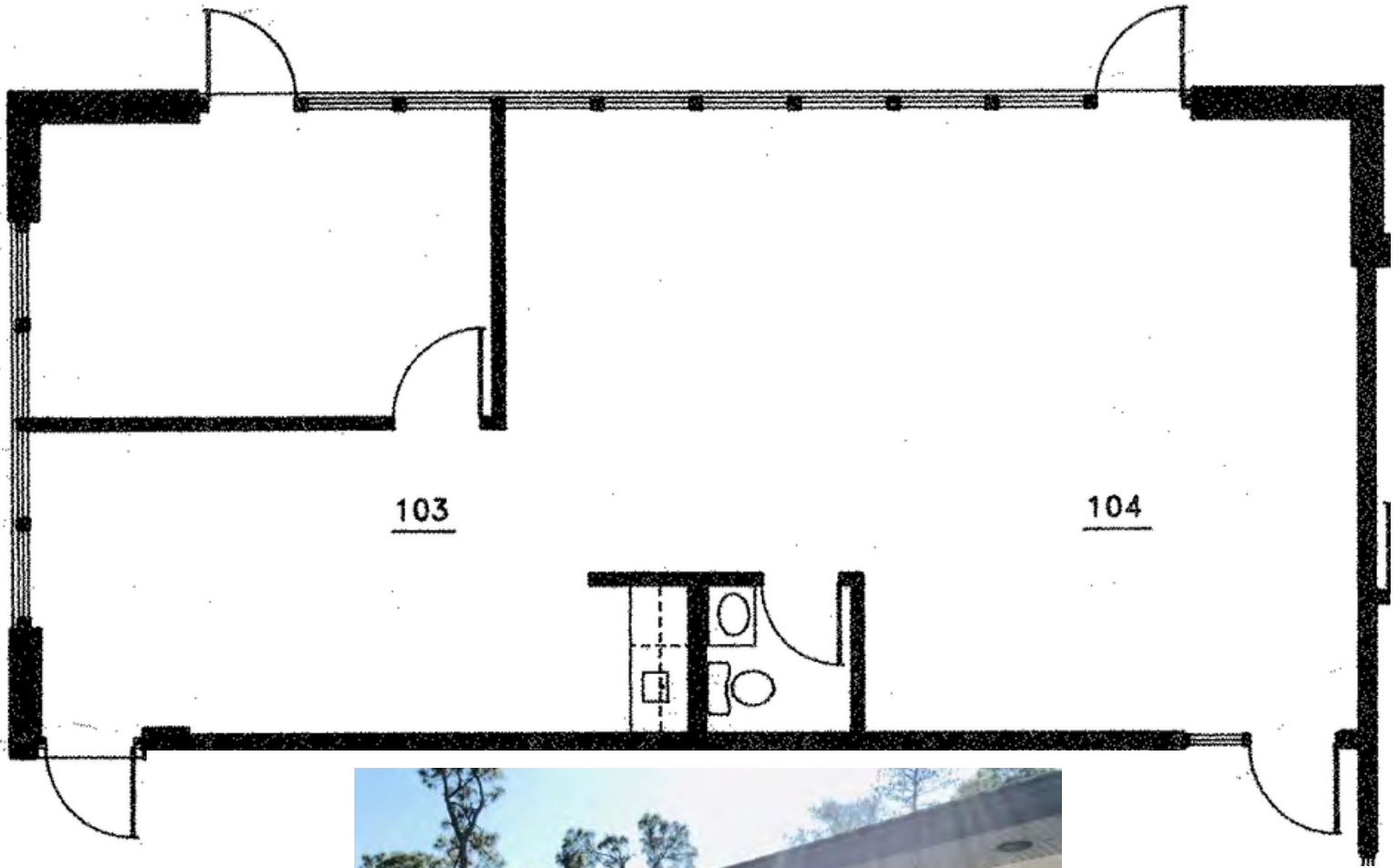
POINCIANA PROFESSIONAL PARK

📍 Located at the intersection of Golden Gate Parkway & Airport Pulling Road

2590 Golden Gate Parkway | Naples, FL 34105

SUITE 103-104

965.5 SF





**Investment
Properties
Corporation**

POINCIANA PROFESSIONAL PARK

📍 Located at the intersection of Golden Gate Parkway & Airport Pulling Road

2590 Golden Gate Parkway | Naples, FL 34105



click here! ↘



Google
Maps

CONTACT (239) 261-3400

Clint Sherwood, CCIM, ext. 179
clint@ipcnaples.com

Tara Stokes, ext. 176
tara@ipcnaples.com