
1001 W 31ST STREET, DOWNERS GROVE, IL

47,384 SF Office Building Available for Sale



Contact:

Dan O'Neill

630 691 0610

doneill@hiffman.com

NAIHiffman
Commercial Real Estate Services, Worldwide

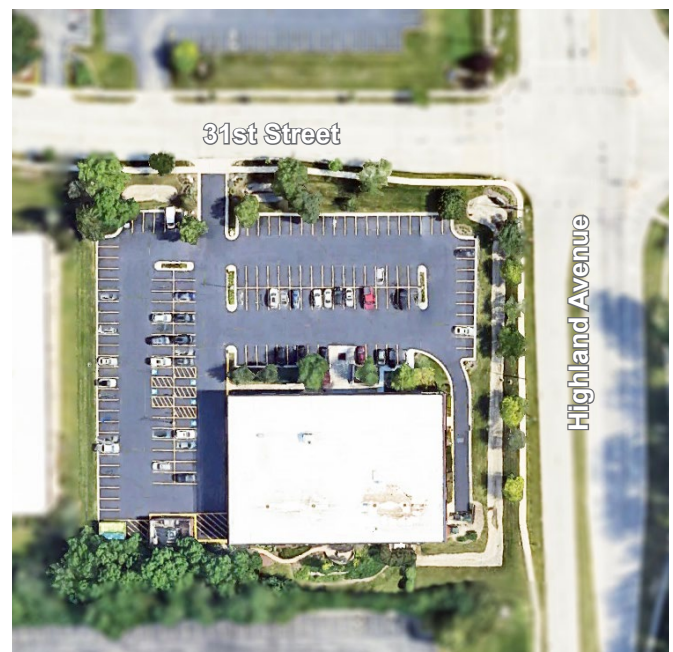


PROPERTY SPECS

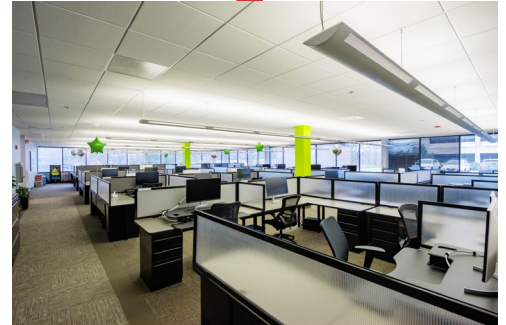
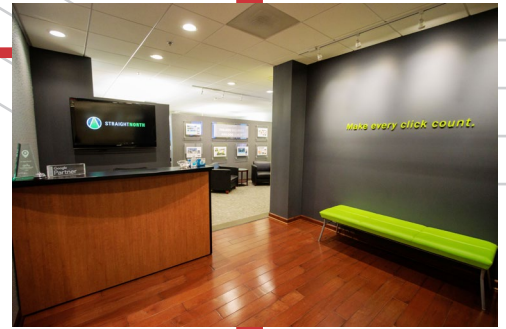
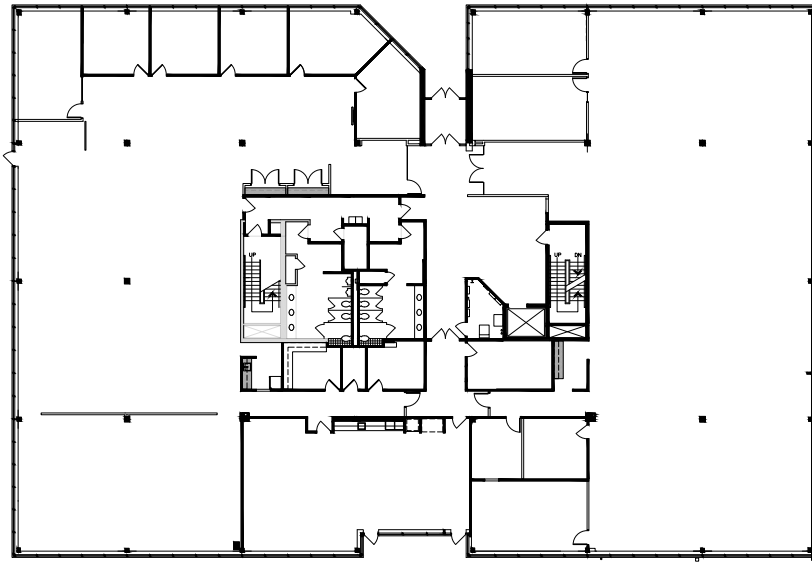
Year Built	1981
# Stories/SF	3-story including lower level
Site Pin/SF	06-32-100-012/122,822 SF
HVAC	<ul style="list-style-type: none">• Cooling Tower• Two (2) Redundant condenser loop pumps• Two (2) 8-ton 100% make-up air units• 43 Water source heat pumps• Boiler
Elevators	One (1) / 2-Passenger
Sprinklers	Wet-pipe sprinkler system
Site Access	Access drive from 31st Street provides access to the parking lot
Zoning	O-R (Office-Research)
Parking	Surface parking for 85 vehicles

47,384 SF Office Building Available for Sale

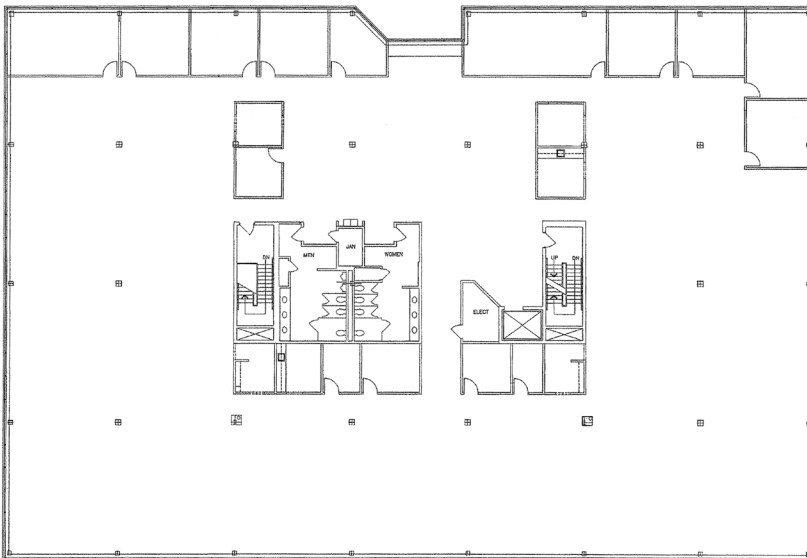
**1001 W 31ST STREET
DOWNERS GROVE, IL**



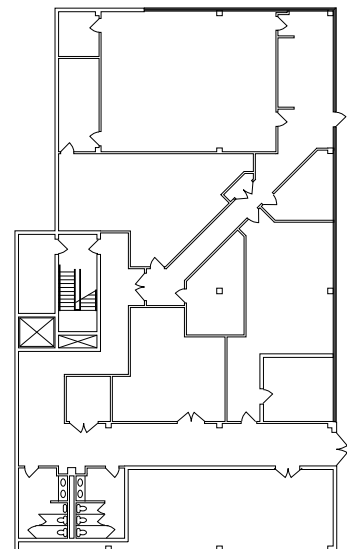
1st Floor - Fully Leased

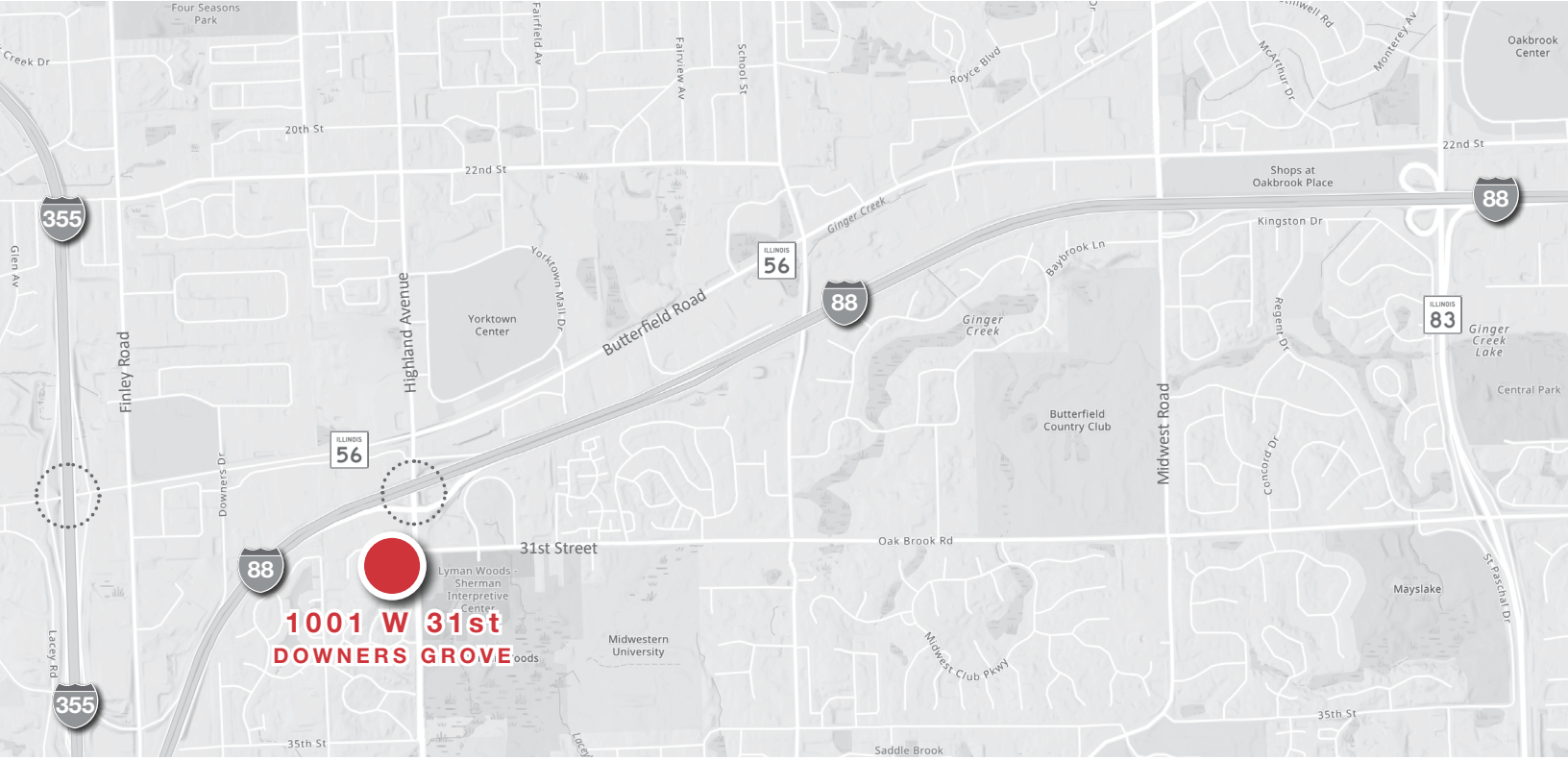


2nd Floor - 22,707 SF Available



Lower Level





- 47,384 SF 3-Story office building with first two floors above grade, and a lower level.
- 22,707 SF 2nd floor available with building signage opportunity.
- Located immediately off the Highland Avenue exit of I-88 (one-quarter mile) and in close proximity to the Butterfield Road exit on I-355 (one mile east) in the busy Butterfield Road Corridor.
- The building is situated near numerous restaurant and shopping opportunities such as Yorktown Center, Buca di Beppo, Portillo's, Potbelly Sandwich Shop, PGA Tour Superstore, Best Buy, and so much more!



For More Information Contact

Dan O'Neill

630 691 0610

doneill@hiffman.com

NAI Hiffman

Commercial Real Estate Services, Worldwide

NAI HIFFMAN / HIFFMAN NATIONAL
ONE OAKBROOK TERRACE SUITE 400
OAKBROOK TERRACE IL 60181
630 932 1234 **HIFFMAN.COM**