

151 Heartland Boulevard Edgewood NY

151 Heartland Blvd is Located in the 400 Acre Heartland Business Center just north of the Deer Park LIRR Station

Just a 60 minutes to Manhattan

Near all major roads:
Long Island Expressway, Northern, Southern & Sagtikos Parkways

Heartland Golf Park, Driving Range, Mini Golf Course & 3 Par Course

Available August 2024

Size 41,288 SF

Office/R&D: approx. 12,900 SF

Truck Docks: 2

Drive in: 1

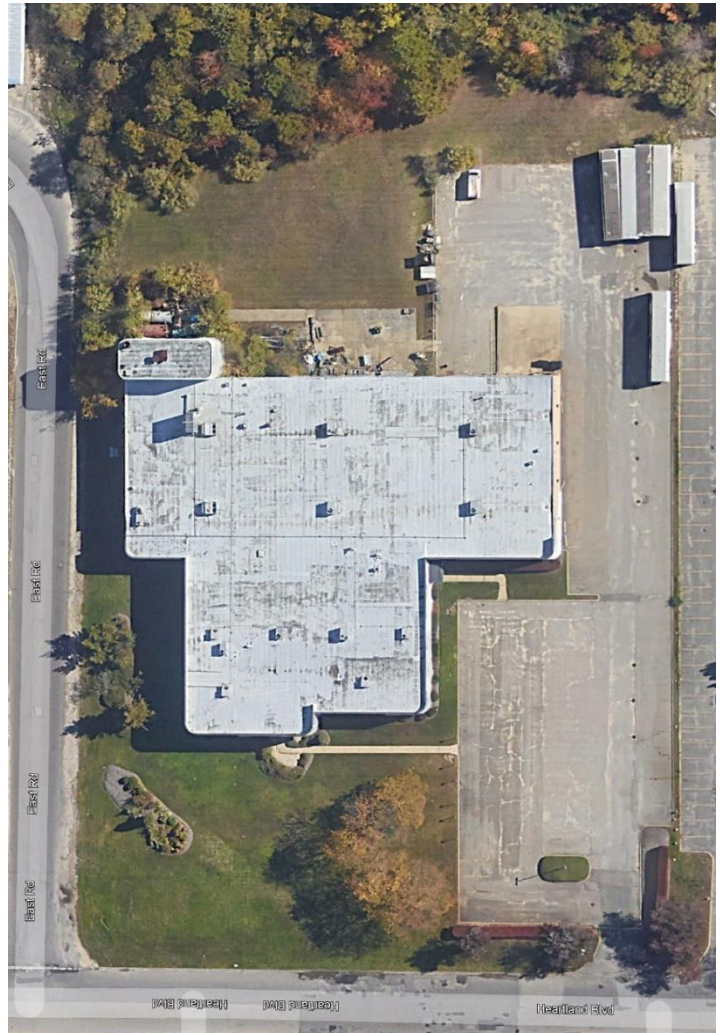
Heat: Gas A/C: 100%

Height: 18'+ clear

Power: 440 Volts 2,500 Amps

Parking: Over 100 cars

May Divide: 20,288 SF & 21,000 SF



Nick Pizzardi

Director of Leasing

631 242-6300 office

516 480-4701 cell

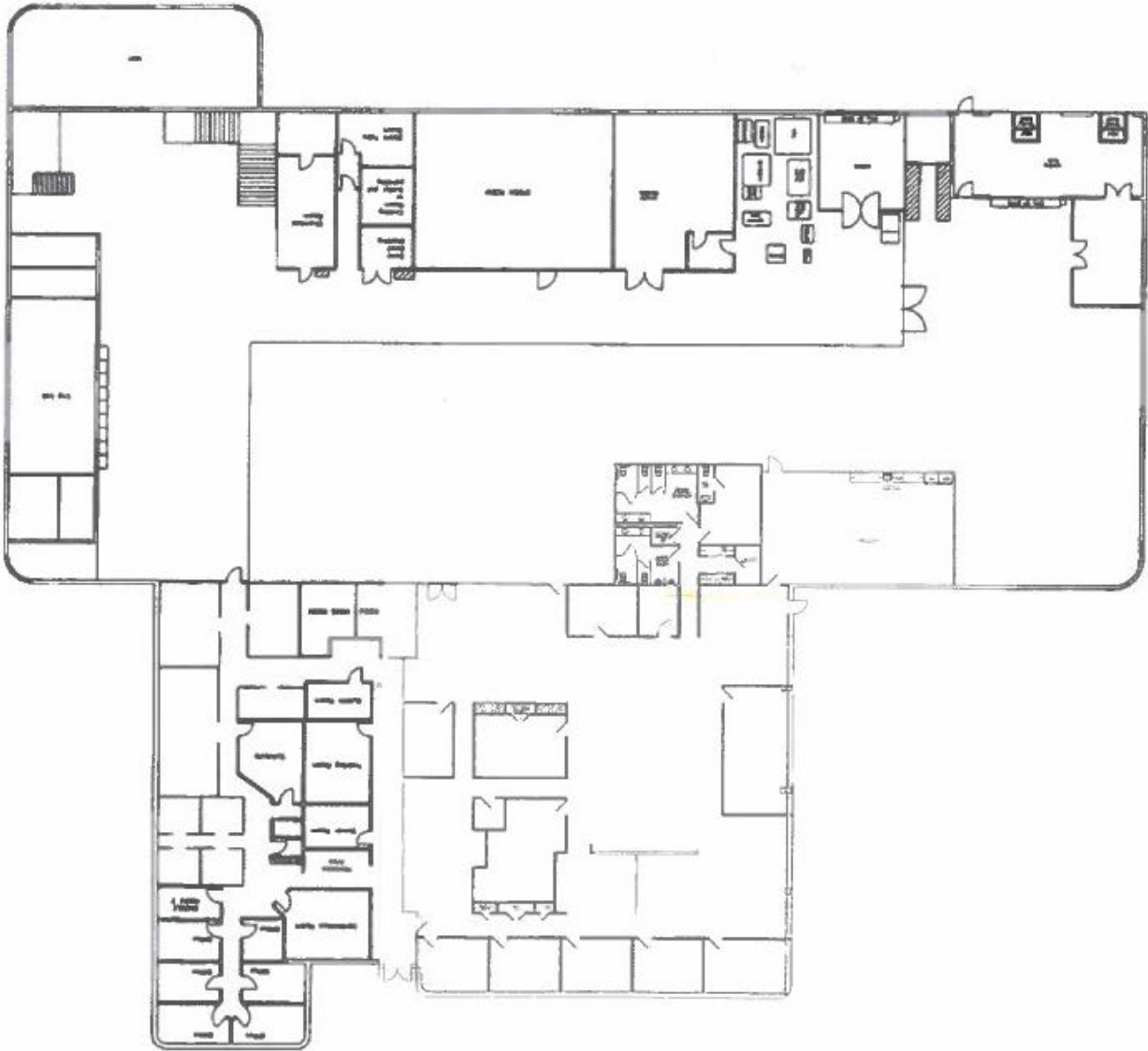
631 242-2820 fax

NPizzardi@hrtld.com

**HEARTLAND
BUSINESS CENTER**
"BUILDING FOR INDUSTRY THE BETTER WAY"

151 Heartland Boulevard Edgewood NY

Size 41,288 SF Available August 2024



Front Entrance

Parking Area

Office/R&D: approx. 12,900 SF

Truck Docks: 2

Drive in: 1

Heat: Gas A/C: 100%

Height: 18'+ clear

Power: 440 Volts 2,500 Amps

Parking: Over 100 cars

May Divide: 20,288 SF

21,000 SF

**HEARTLAND
BUSINESS CENTER**
"BUILDING FOR INDUSTRY THE BETTER WAY"

Nick Pizzardi

Director of Leasing

631 242-6300 office

516 480-4701 cell

631 242-2820 fax

NPizzardi@hrtld.com