

1014 E. DRAPER PKWY.

**FOR LEASE**  
**RATE: \$1.15/SF NNN**



## PROPERTY DETAILS

1014 E. Draper Pkwy., Draper, UT 84020

- 5,524 SF available
  - » 4,170 SF warehouse/shop
  - » 1,354 SF office
- Dedicated reception area
- Bar-style break area
- Small storage room
- Climate-controlled (heating and air)
- Draper Towne Center zone
- Variety of commercial uses approved such as:
  - » General retail
  - » Recreation/entertainment
  - » Manufacturing
- Ground level loading:
  - » One (1) private 8'x10' roll-up
  - » One (1) shared 14'x16' roll-up
- Power: 3-phase, 480V
- Clear height: 12'
- Industrial sink
- Dry sprinklered
- Only building of its kind in the area!

## 2025 DEMOS



### EST. POPULATION

1 MILE » **10,608**  
3 MILE » **76,387**  
5 MILE » **181,174**



### EST. HOUSEHOLDS

1 MILE » **3,259**  
3 MILE » **25,105**  
5 MILE » **60,395**



### EST. AVERAGE HH INCOME

1 MILE » **\$219,290**  
3 MILE » **\$177,953**  
5 MILE » **\$162,808**

**NEWMARK**



**MOUNTAIN WEST**

### TAYLOR OGDEN

togden@newmarkmw.com  
direct 801.750.6342  
[View Profile](#)

### DANNY SANDER

dsander@newmarkmw.com  
direct 717.512.4195  
[View Profile](#)

### JEFFERY SORENSON

jsorensen@newmarkmw.com  
direct 636.219.5642  
[View Profile](#)

**FULL SERVICE  
COMMERCIAL REAL ESTATE**  
2015 West Grove Parkway, Suite J  
Pleasant Grove, UT 84062  
Office 385.233.9140  
[www.newmarkmw.com](http://www.newmarkmw.com)





# NEWMARK

---

 **MOUNTAIN WEST**

**TAYLOR OGDEN**  
 togden@newmarkmw.com  
 direct 801.750.6342  
[View Profile](#)

**DANNY SANDER**  
 dsander@newmarkmw.com  
 direct 717.512.4195  
[View Profile](#)

**JEFFERY SORENSON**  
 jsorenson@newmarkmw.com  
 direct 636.219.5642  
[View Profile](#)



**FULL SERVICE  
 COMMERCIAL REAL ESTATE**  
 2015 West Grove Parkway, Suite J  
 Pleasant Grove, UT 84062  
 Office 385.233.9140  
[www.newmarkmw.com](http://www.newmarkmw.com)





# NEWMARK

## MOUNTAIN WEST

**TAYLOR OGDEN**  
 togden@newmarkmw.com  
 direct 801.750.6342  
[View Profile](#)

**DANNY SANDER**  
 dsander@newmarkmw.com  
 direct 717.512.4195  
[View Profile](#)

**JEFFERY SORENSON**  
 jsorenson@newmarkmw.com  
 direct 636.219.5642  
[View Profile](#)



**FULL SERVICE  
 COMMERCIAL REAL ESTATE**  
 2015 West Grove Parkway, Suite J  
 Pleasant Grove, UT 84062  
 Office 385.233.9140  
[www.newmarkmw.com](http://www.newmarkmw.com)





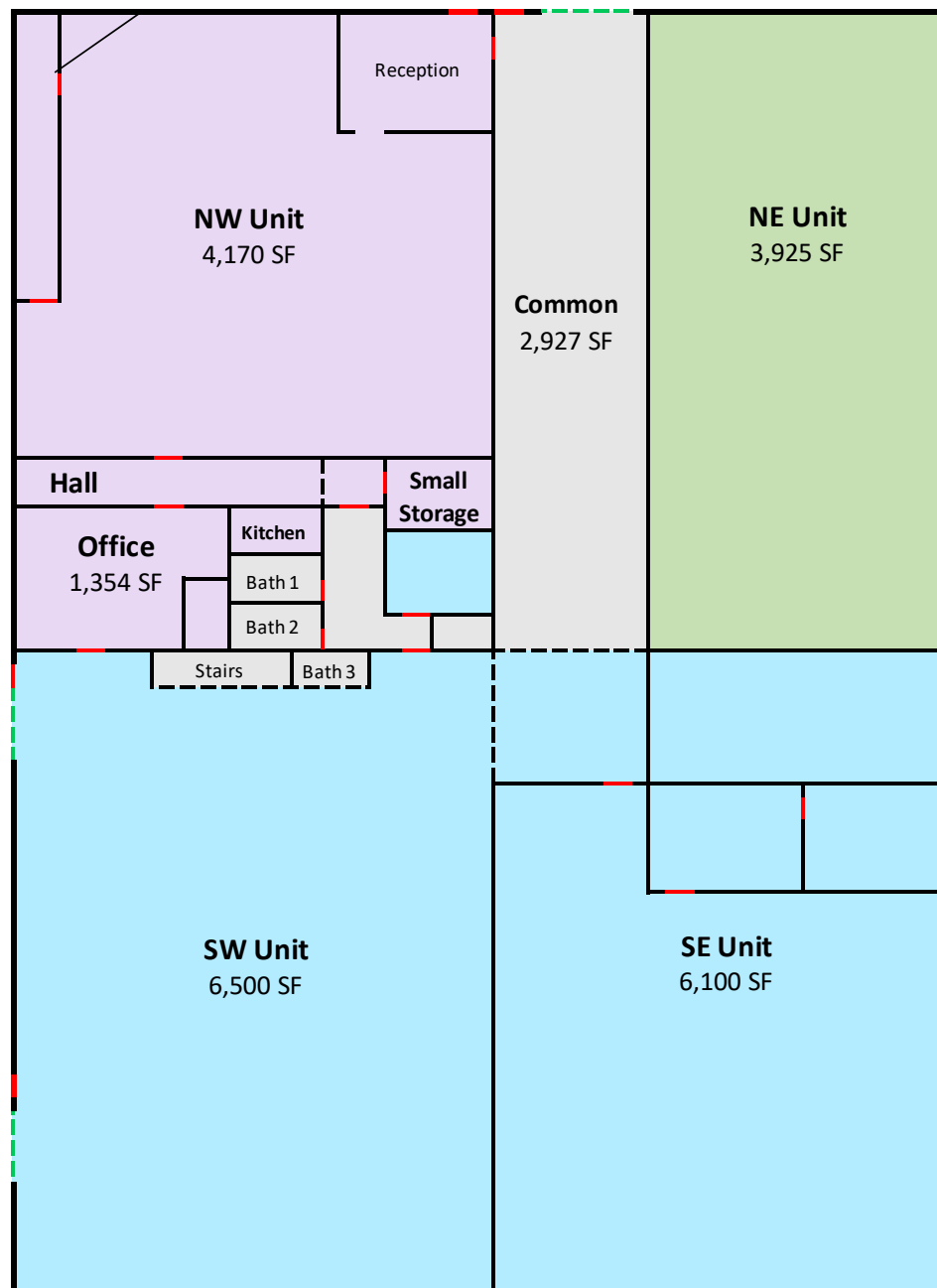
**TAYLOR OGDEN**  
togden@newmarkmw.com  
direct 801.750.6342  
[View Profile](#)

**DANNY SANDER**  
dsander@newmarkmw.com  
direct 717.512.4195  
[View Profile](#)

**JEFFERY SORENSON**  
jsorenson@newmarkmw.com  
direct 636.219.5642  
[View Profile](#)

**FULL SERVICE  
COMMERCIAL REAL ESTATE**  
2015 West Grove Parkway, Suite J  
Pleasant Grove, UT 84062  
Office 385.233.9140  
[www.newmarkmw.com](http://www.newmarkmw.com)

## FLOOR PLAN



NEWMARK



MOUNTAIN WEST

## TAYLOR OGDEN

togden@newmarkmw.com

direct 801.750.6342

[View Profile](#)

## DANNY SANDER

dsander@newmarkmw.com

direct 717.512.4195

[View Profile](#)

## JEFFERY SORENSON

jsorenson@newmarkmw.com

direct 636.219.5642

[View Profile](#)

## FULL SERVICE

## COMMERCIAL REAL ESTATE

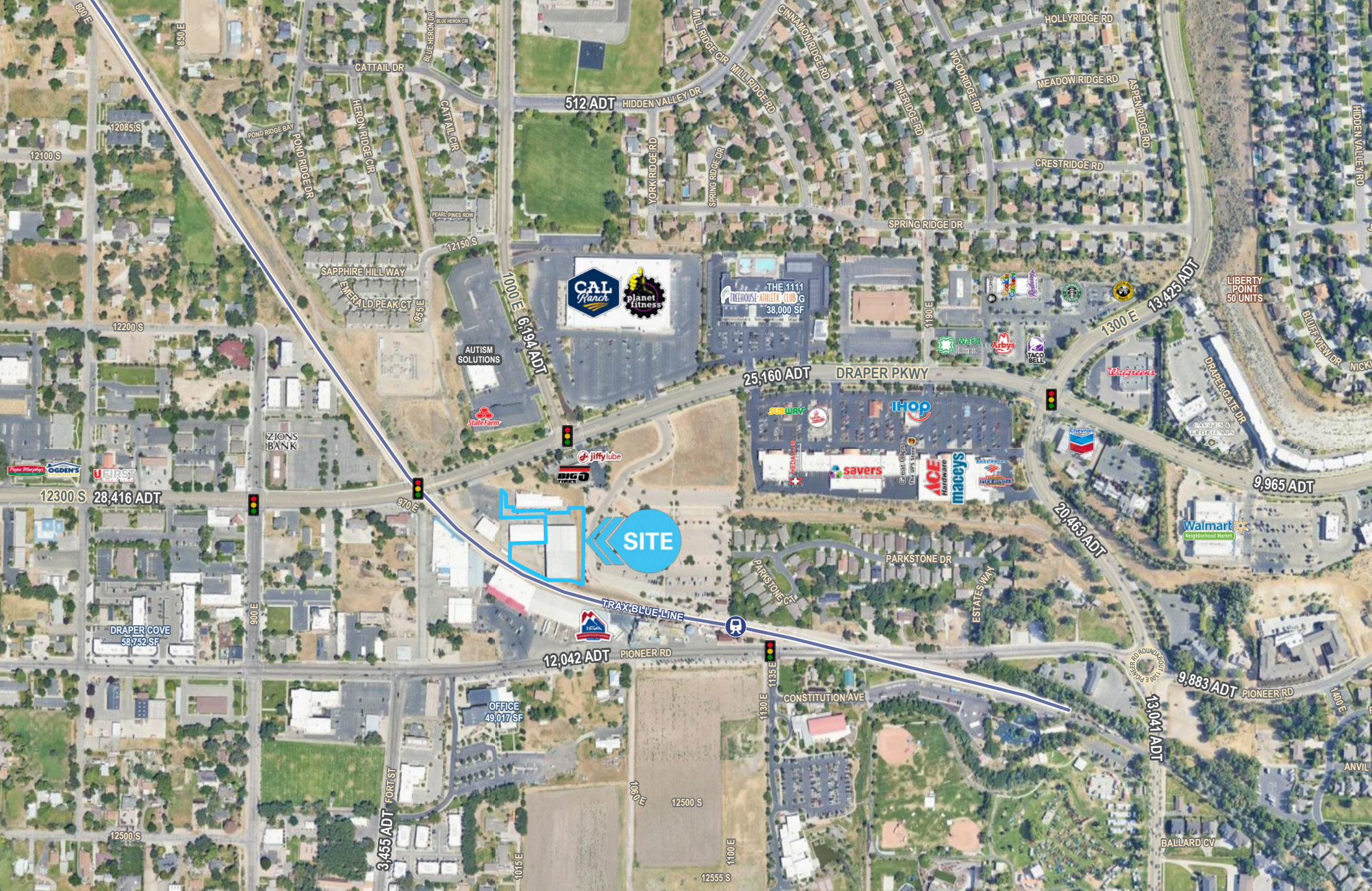
2015 West Grove Parkway, Suite J

Pleasant Grove, UT 84062

Office 385.233.9140

[www.newmarkmw.com](http://www.newmarkmw.com)





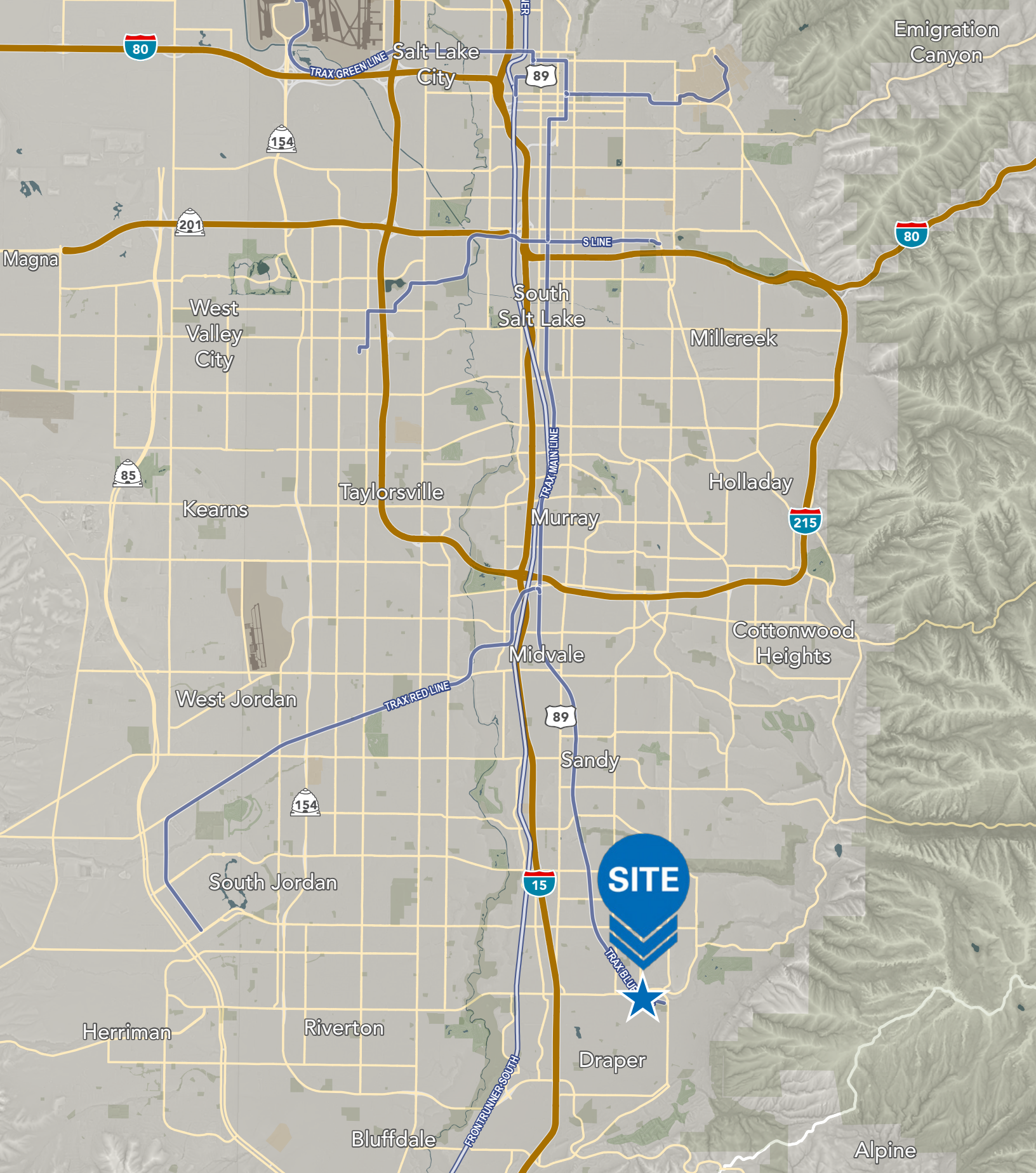
**TAYLOR OGDEN**  
togden@newmarkmw.com  
direct 801.750.6342  
[View Profile](#)

**DANNY SANDER**  
dsander@newmarkmw.com  
direct 717.512.4195  
[View Profile](#)

**JEFFERY SORENSON**  
jsorensen@newmarkmw.com  
direct 636.219.5642  
[View Profile](#)

**FULL SERVICE  
COMMERCIAL REAL ESTATE**  
2015 West Grove Parkway, Suite J  
Pleasant Grove, UT 84062  
Office 385.233.9140  
[www.newmarkmw.com](http://www.newmarkmw.com)





**TAYLOR OGDEN**  
togden@newmarkmw.com  
direct 801.750.6342  
[View Profile](#)

**DANNY SANDER**  
dsander@newmarkmw.com  
direct 717.512.4195  
[View Profile](#)

**JEFFERY SORENSON**  
jsorensen@newmarkmw.com  
direct 636.219.5642  
[View Profile](#)

**FULL SERVICE  
COMMERCIAL REAL ESTATE**  
2015 West Grove Parkway, Suite J  
Pleasant Grove, UT 84062  
Office 385.233.9140  
[www.newmarkmw.com](http://www.newmarkmw.com)