



Retail building for lease
645 Ellis Street, Mountain View
 ±5,336 sq ft, divisible for two tenants

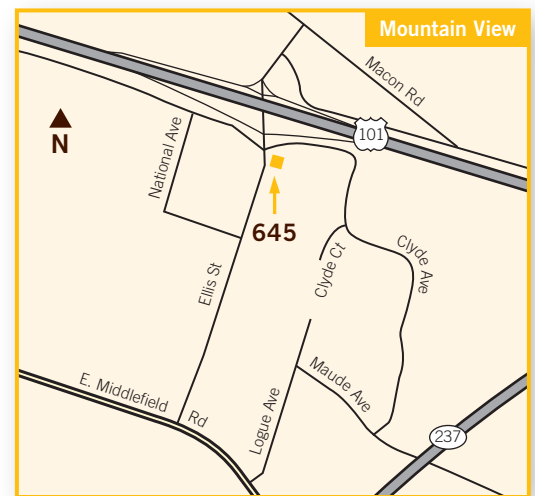
- Prominent high-visibility, freeway-accessible corner location at US 101 and Ellis Street
- Award-winning architecture, expansive window line
- Designed to accommodate food service uses, including large outdoor dining area
- Over-standard parking and reciprocal parking easement with adjacent office building
- Available Q1 2026

Permitted Uses:

- Food service
- Grocery stores
- Personal services
- Office

Provisional Use Permit Required:

- Child day-care facilities
- Indoor recreation/fitness centers
- Private schools
- Medical services

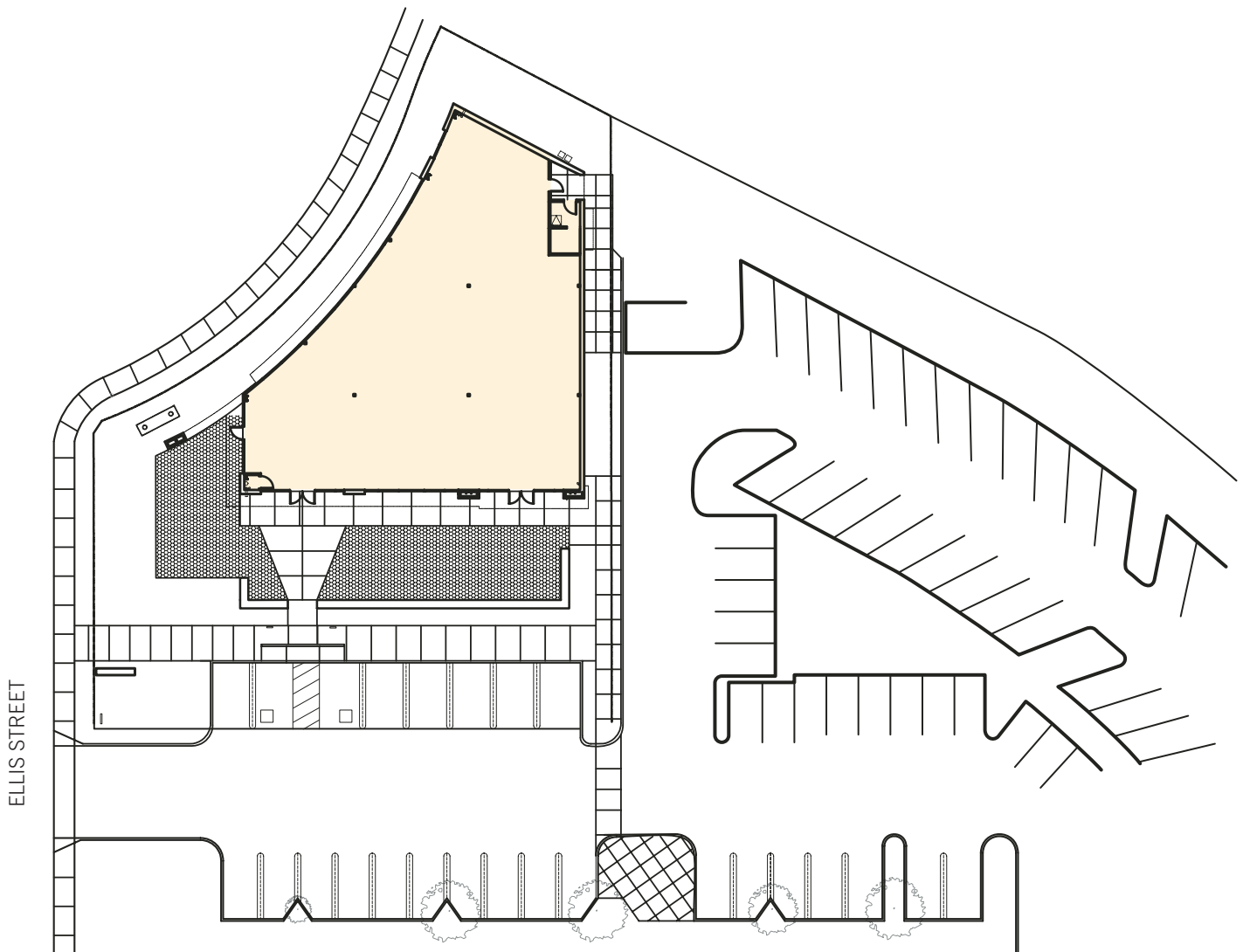


Dave Conklin · Geordie McKee 650.321.3040
 Lic. 01036562 Lic. 01257296

Retail building for lease

645 Ellis Street, Mountain View

±5,336 sq ft, divisible for two tenants



Floor plans may not be to scale.
The information contained herein has been obtained from sources we deem reliable. We have no reason to doubt its accuracy, but we do not guarantee it. All information should be verified prior to lease.

Dave Conklin · Geordie McKee 650.321.3040
Lic. 01036562 Lic. 01257296