

# BHHS MULTI-TENANT In ANSON, IN

6015 Perry Worth Rd, Whitestown, IN 46075

FOR LEASE

Property Summary



UPDATED DESIGN  
09.13.24  
NOT TO SCALE  
PROJECT #240103  
BERKSHIRE HATHAWAY MULTI-TENANT ANSON



## Property Description

Introducing a prime leasing opportunity at Perry Worth Rd, Whitestown, IN, 46075.

This contemporary new construction building boasts three distinct retail or office units, offering between 1800 sqft and just over 5468 sqft of leasable space. With sleek, modern design and high visibility, the property presents an ideal setting for retailers and offices to establish their presence in this thriving location.

Ample parking, convenient access, and customizable floor plans make this a versatile and attractive option for businesses seeking a prominent, well-equipped space to captivate customers and drive success. Explore the potential of this exceptional property for your business today. Projected building completion of late summer 2025.

## Offering Summary

Lease Rate:	Negotiable for the first 60 days
Available SF:	1,800 up to 5,468
Lot Size:	1.136 Acres
Building Size:	8,102 SF

Demographics	0.3 Miles	0.5 Miles	1 Mile
Total Households	79	353	1,143
Total Population	197	934	3,108
Average HH Income	\$137,358	\$153,914	\$156,842

## Property Highlights

- Modern new construction building
- Ranging from 1800 sqft to over 5468 sqft
- High visibility location from I-65
- Ample parking for customers and tenants
- Convenient and easily accessible location
- Customizable floor plans
- Prime opportunity for retail or office (professional users)
- Sleek, contemporary design
- Ideal setting for establishing retail or office presence

Dan O'Neil  
Broker  
317 560 1323  
doneil@bhhsin.com

Indiana Realty  
3801 E. 82nd St  
Indianapolis, IN 46240  
317.595.2100  
<https://www.bhhs.com/indiana-realty-...>

**BERKSHIRE  
HATHAWAY**  
HOMESERVICES | INDIANA  
REALTY

# BERKSHIRE HATHAWAY MULTI-TENANT ANSON

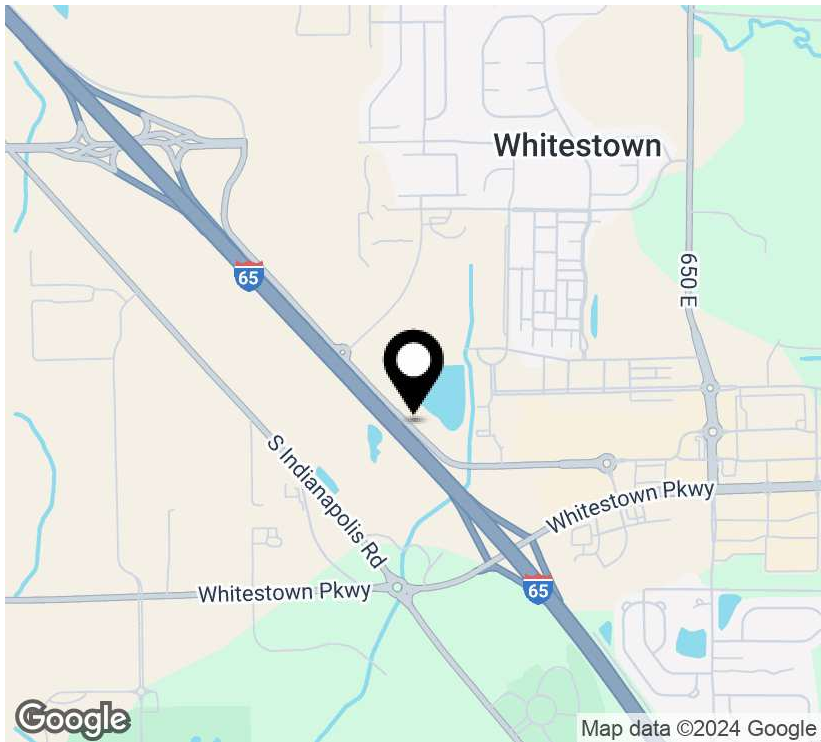
6015 Perry Worth Rd, Whitestown, IN 46075

FOR LEASE

Executive Summary



ED DESIGN  
LE  
40103  
HIRE HATHAWAY MULTI-TENANT ANSON



## Offering Summary

Lease Rate	Negotiable for the first 60 days
Parking Spaces / Ratio	4.43/1000 sqft
Site Size	1.136 Acres
Year Built	2025
# of Floors	1

## Property Overview

Introducing a prime leasing opportunity at Perry Worth Rd, Whitestown, IN, 46075. This contemporary new construction building boasts three distinct retail or office units, offering between 1800 sqft and just over 5468 sqft of leasable space. With sleek, modern design and high visibility, the property presents an ideal setting for retailers and offices to establish their presence in this thriving location. Ample parking, convenient access, and customizable floor plans make this a versatile and attractive option for businesses seeking a prominent, well-equipped space to captivate customers and drive success. Explore the potential of this exceptional property for your business today. Projected building completion of late summer 2025.

## Property Highlights

- Modern new construction building
- Ranging from 1800 sqft to over 5468 sqft
- High visibility location and near I-65
- Ample parking for customers and tenants
- Convenient and easily accessible location
- Customizable floor plans
- Prime opportunity for retail or office (professional users)

Dan O'Neil  
Broker  
317 560 1323  
doneil@bhhsin.com

Indiana Realty  
3801 E. 82nd St  
Indianapolis, IN 46240  
317.595.2100  
<https://www.bhhs.com/indiana-realty-...>

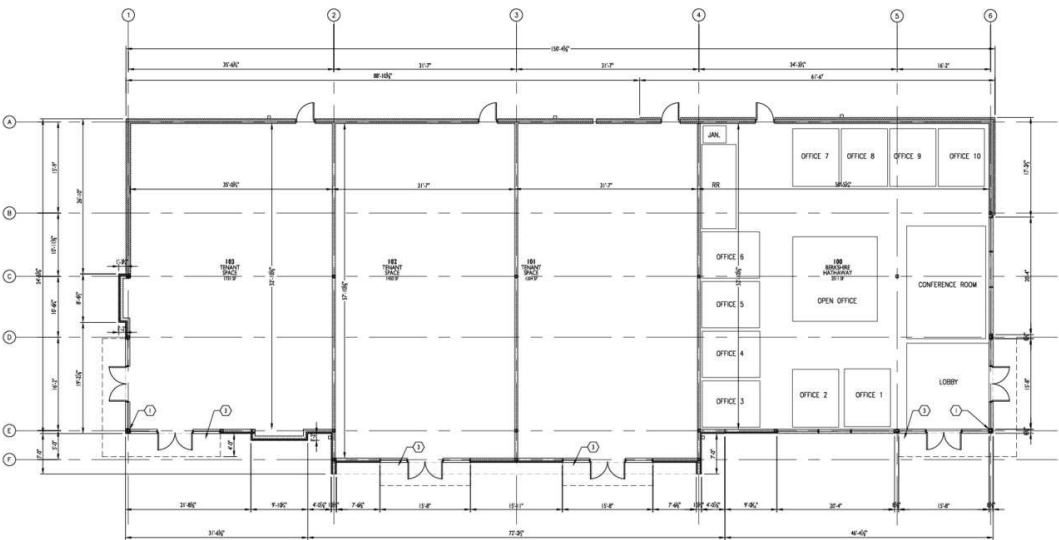
BERKSHIRE  
HATHAWAY  
HOMESERVICES | INDIANA  
REALTY

BERKSHIRE HATHAWAY MULTI-TENANT ANSON

6015 Perry Worth Rd, Whitestown, IN 46075

FOR LEASE

Lease Spaces



1. ALL MATERIALS LOCATED IN CEILING PLUMB SHALL BE RATED FOR SOUND INSULATION OR MOTIFIED TO PROVIDE COMPLIANCE. THE FOLLOWING ARE NOT PERMITTED TO INSULATION (PVC DRAIN PIPING AND LOW VOLTAGE WIRING, TELECOMMUNICATION CABLES, PLUMBING SUPPLY AND DRAIN LINES AND SUPPORTING BRACKETS AND/OR BLOCKING FOR CEILING HANGERS).
2. PRIOR TO ORDERING ANY PRODUCTS CONTRACTOR SHALL SUBMIT SAMPLES TO THE ARCHITECT OF ALL FINISH MATERIALS TO BE USED ON THIS PROJECT. THE CONTRACTOR SHALL BEAR SOLE RESPONSIBILITY FOR ANY MATERIALS ORDERED INCORRECTLY WHEN THAT MATERIAL WAS NOT REVIEWED BY THE ARCHITECT.
3. PROVIDE CONCRETE FILLER, WPI INSULANTS AT ALL REQUIRED UTILITY EQUIPMENT LOCATIONS SUCH AS GAS METERS, ELECTRICAL TRANSFORMER PANELS, ETC. COORDINATE WITH UTILITY COMPANY AND CONTRACTOR WHEN APPLICABLE FOR NECESSARY LOCATIONS. REFER TO CIVIL DRAWINGS FOR INSULANT PROTECTION AND ADDITIONAL INFORMATION.
4. ALL DOORS, UNLESS OTHERWISE NOTED, TO HAVE HINGE SIDE SET IF FROM CORNER KNOCK TO OUTSIDE OF FRAME.
5. UNLESS SPECIFIED OTHERWISE, ALL INTERIOR SLAB AND SLAB PARTS TO BE 4" MIN. 150# DOWEL AND 150# 15 LOCAL.
6. ALL DOOR DOORS TO HAVE TACTILE DET. 150# PER 10' OF THE AND 11' 3" 200.

KEYED NOTES

1. STRUCTURAL STEEL COLUMNS: REFER TO STRUCTURAL DRAWINGS FOR SIZES AND TOLERANCES.
2. ROOF ACCESS LOCATIONS: REFER TO WALL SECTION FOR MORE INFORMATION.
3. INSULATED CONCRETE MASONRY ABOVE.
4. ADA COMPLIANT WALL MOUNTED LAVATORY: PROVIDE SCALD GUARD ON SHOWER PANTRY LINE. REFER TO PLUMBING DRAWING. SEE TYPICAL ACCESSIBILITY DETAILS FOR ACCESSIBLE PLUMBING INFORMATION.
5. ADA COMPLIANT TANK TOLUET: REFER TO PLUMBING DRAWING. SEE TYPICAL ACCESSIBILITY DETAILS FOR ACCESSIBLE PLUMBING INFORMATION.
6. ADA COMPLIANT WALL MOUNTED URINAL: PROVIDE VALVE CONTROLS. CENTER IN WIDTH OF WALL. REFER TO PLUMBING DRAWING. SEE TYPICAL ACCESSIBILITY DETAILS FOR ACCESSIBLE PLUMBING INFORMATION.
7. STANDARD HEIGHT TANK TOLUET: CENTER IN WIDTH OF WALL.
8. STANDARD HEIGHT URINAL: CENTER IN WIDTH OF PARTITION (FOR WALL).
9. REPAIR EXISTING OPENINGS AS REQUIRED WHERE FOREMONT HAS BEEN REMOVED.
10. REPAIR OPENINGS IN EXISTING WALL IN METAL STUD & 1/2" GYP. DO NOT PATCH EXISTING WALL. FINISHES: REFER TO PLUMBING DRAWING.
11. REPLACE GLASS OF SPIDERGLASS IN INSULATED SPANDREL GLASS.
12. ADDITIONAL FINISHES OF WALL, BOTH SIDES.
13. 2" METAL STUDS IN BATT INSULATION W/ VAPOR BARRIER AND 5/8" GYP. BOARD OVER WALL.

5745 LAWTON LOOP EAST DR #200  
INDIANAPOLIS, IN 46216  
P : 317.289.0681



MARTEN CONSTRUCTION  
MANAGEMENT

5719 LAWTON LOOP EAST DR #21  
INDIANAPOLIS, IN 46216  
P : 317.475.0055

CERTIFICATION

PRELIMINARY  
NOT FOR CONSTRUCTION

00.00.00

THIS DRAWING AND THE DESIGNER'S WORK  
AND THE CONTRACTOR'S WORK SHALL BE  
THE PROPERTY OF THE DESIGNER. IT IS NOT  
TO BE REPRODUCED, COPIED, OR  
IN ANY MANNER, WITHOUT THE  
WRITTEN CONSENT OF THE DESIGNER.  
© COPYRIGHT 2024 COLUMBIA INSURANCE

PROJECT INFORMATION



BERKSHIRE HATHAWAY  
HOME SERVICES  
NEW MULTI-TENANT  
BUILDING

XXXX PERRY WORTH RD  
WHITESTOWN, IN 46075

ISSUE DATES

ISSUE DATE

Lease Information

Lease Type:	NNN	Lease Term:	Negotiable
Total Space:	3	Lease Rate:	Negotiable for the first 60 days

Available Spaces

Suite	Tenant	Size (SF)	Lease Type	Lease Rate	Description
101 Perry Worth Rd, Whitestown, IN 46075	-	1,800 SF	NNN	Negotiable for the first 60 days	-
102 Perry Worth Rd, Whitestown, IN 46075	-	1,800 SF	NNN	Negotiable for the first 60 days	-
103 Perry Worth Rd, Whitestown, IN 46075	-	1,800 SF	NNN	Negotiable for the first 60 days	-

Dan O'Neil  
Broker  
317 560 1323  
doneil@bhhsin.com

Indiana Realty  
3801 E. 82nd St  
Indianapolis, IN 46240  
317.595.2100  
<https://www.bhhs.com/indiana-realty-...>

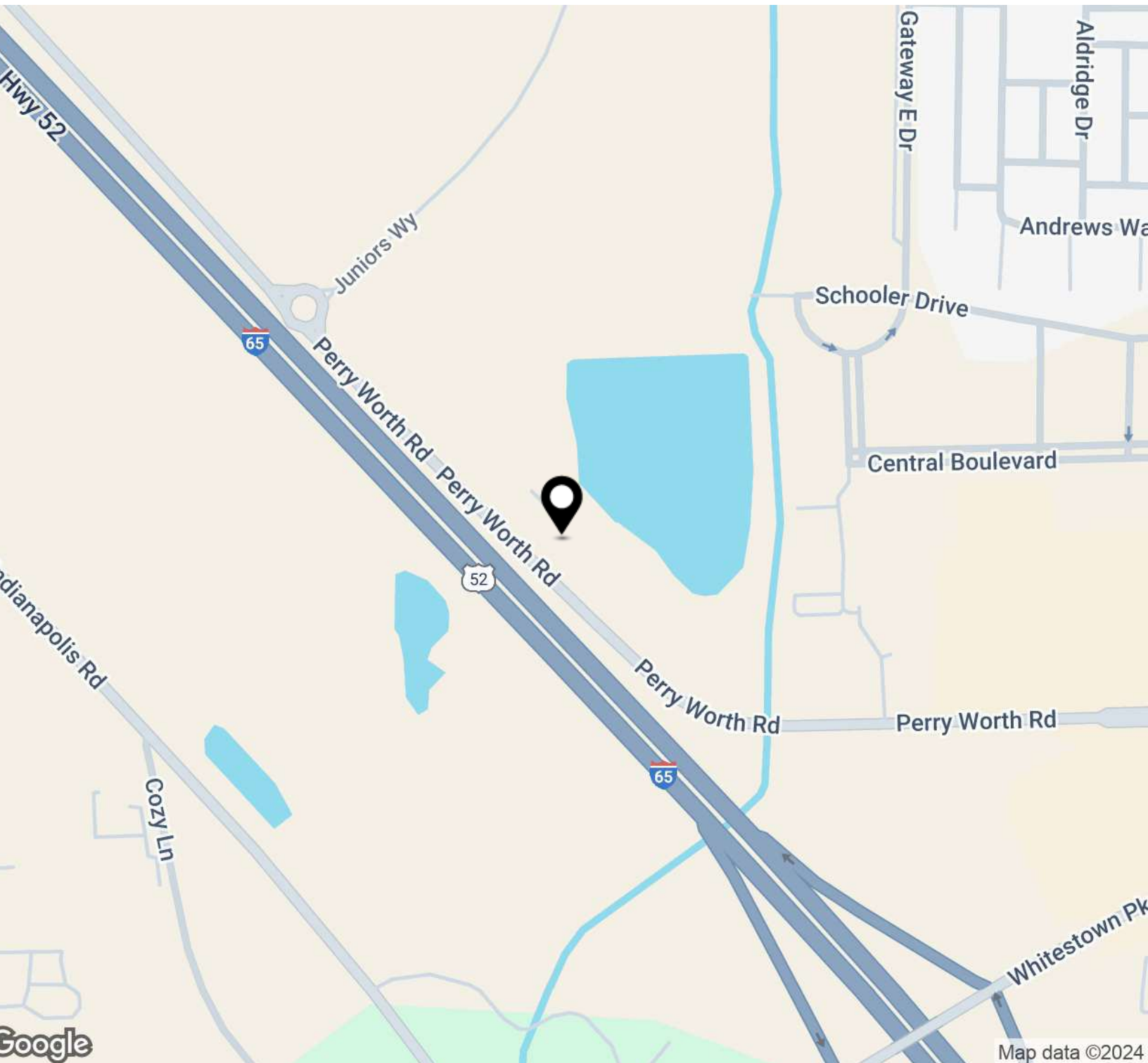


# BERKSHIRE HATHAWAY MULTI-TENANT ANSON

6015 Perry Worth Rd, Whitestown, IN 46075

FOR LEASE

Location Map



Dan O'Neil  
Broker  
317 560 1323  
doneil@bhhsin.com

Indiana Realty  
3801 E. 82nd St  
Indianapolis, IN 46240  
317.595.2100  
<https://www.bhhs.com/indiana-realty-...>

**BERKSHIRE  
HATHAWAY**  
HOMESERVICES

INDIANA  
REALTY

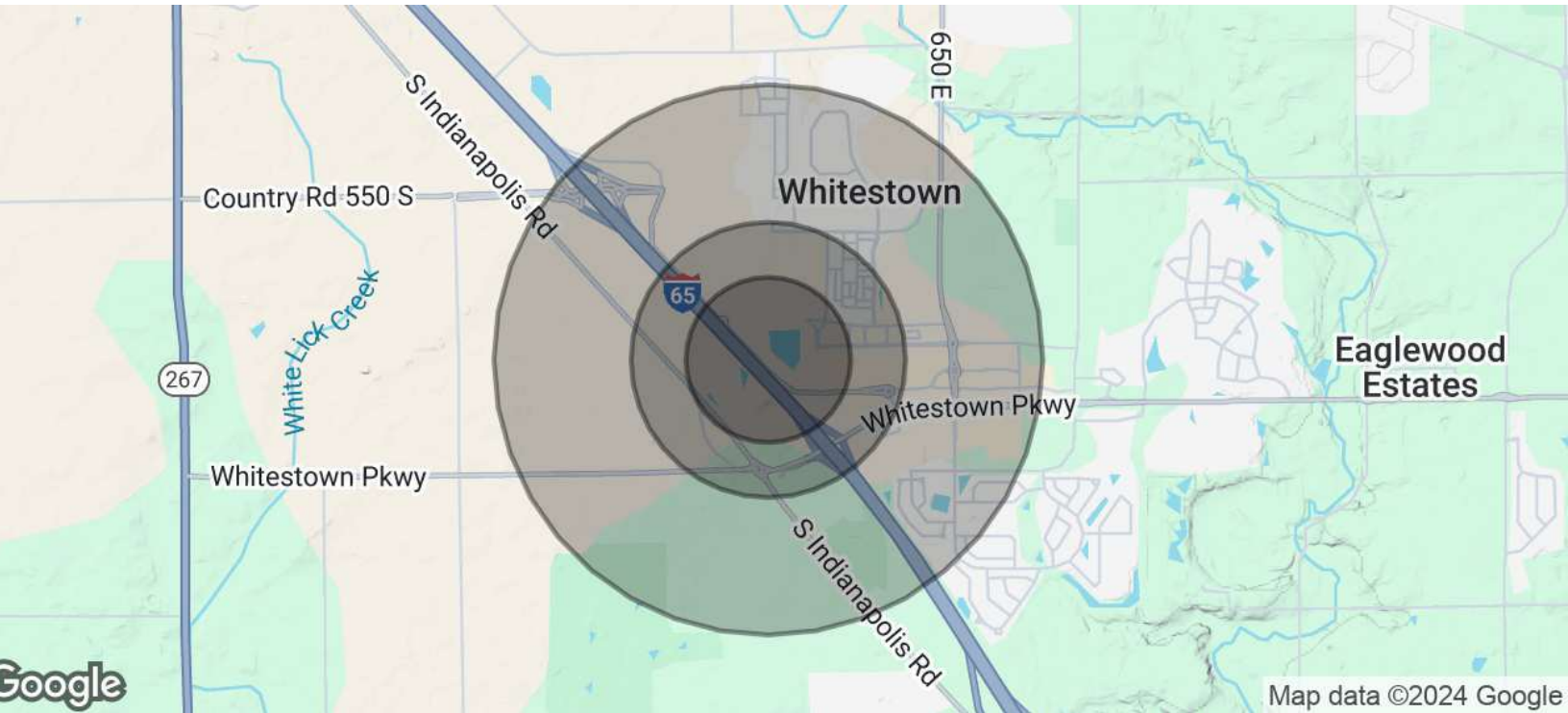


# Berkshire Hathaway Multi-Tenant Anson

6015 Perry Worth Rd, Whitestown, IN 46075

FOR LEASE

Demographics Map & Report



Population	0.3 Miles	0.5 Miles	1 Mile
Total Population	197	934	3,108
Average Age	37	35	35
Average Age (Male)	37	35	34
Average Age (Female)	38	36	35

Households & Income	0.3 Miles	0.5 Miles	1 Mile
Total Households	79	353	1,143
# of Persons per HH	2.5	2.6	2.7
Average HH Income	\$137,358	\$153,914	\$156,842
Average House Value	\$522,190	\$602,430	\$591,614

Demographics data derived from AlphaMap

Dan O'Neil  
Broker  
317 560 1323  
doneil@bhhsin.com

Indiana Realty  
3801 E. 82nd St  
Indianapolis, IN 46240  
317.595.2100  
<https://www.bhhs.com/indiana-realty-...>

Berkshire Hathaway HomeServices

Indiana Realty