

Available Medical Office Space for Lease

# San Gabriel Valley Medical Plaza

207 South Santa Anita Street, San Gabriel, CA 91776

For leasing information:

*Trey Trask*

Senior Director, Leasing

Phone: 858-794-1900

Fax: 858-794-1910

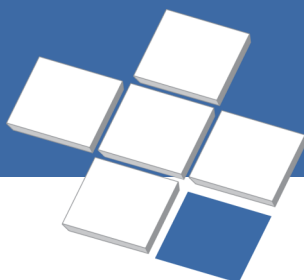
trask@pmbres.com

www.pmbres.com

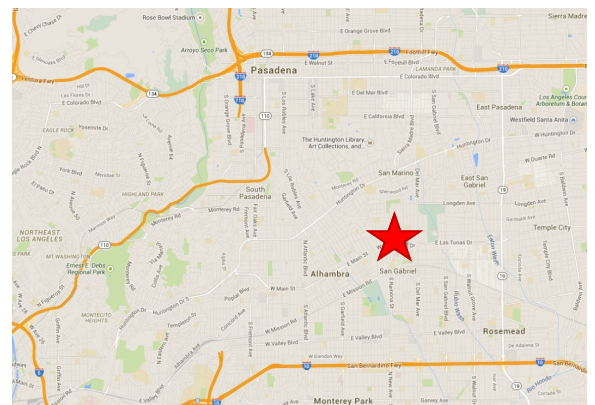
CA Lic. 01304141



- **BUILD-TO-SUIT & MOVE-IN READY SPACE AVAILABLE**
- 58,000 Square Feet Four-Story Medical Office Building
- Conveniently located on the San Gabriel Valley Medical Center campus
- Surface parking adjacent to building
- Full-service maintenance
- Convenient access to the 10 & 210 freeways
- Surgery Center, Lab & Pharmacy located in building



**PMB**  
Real Estate Services  
*Real Estate Management Solutions for Healthcare*



# First Floor Availabilities



Suite G16  
11,945 RSF



# Third Floor Availabilities

Suite 335  
3,453 RSF

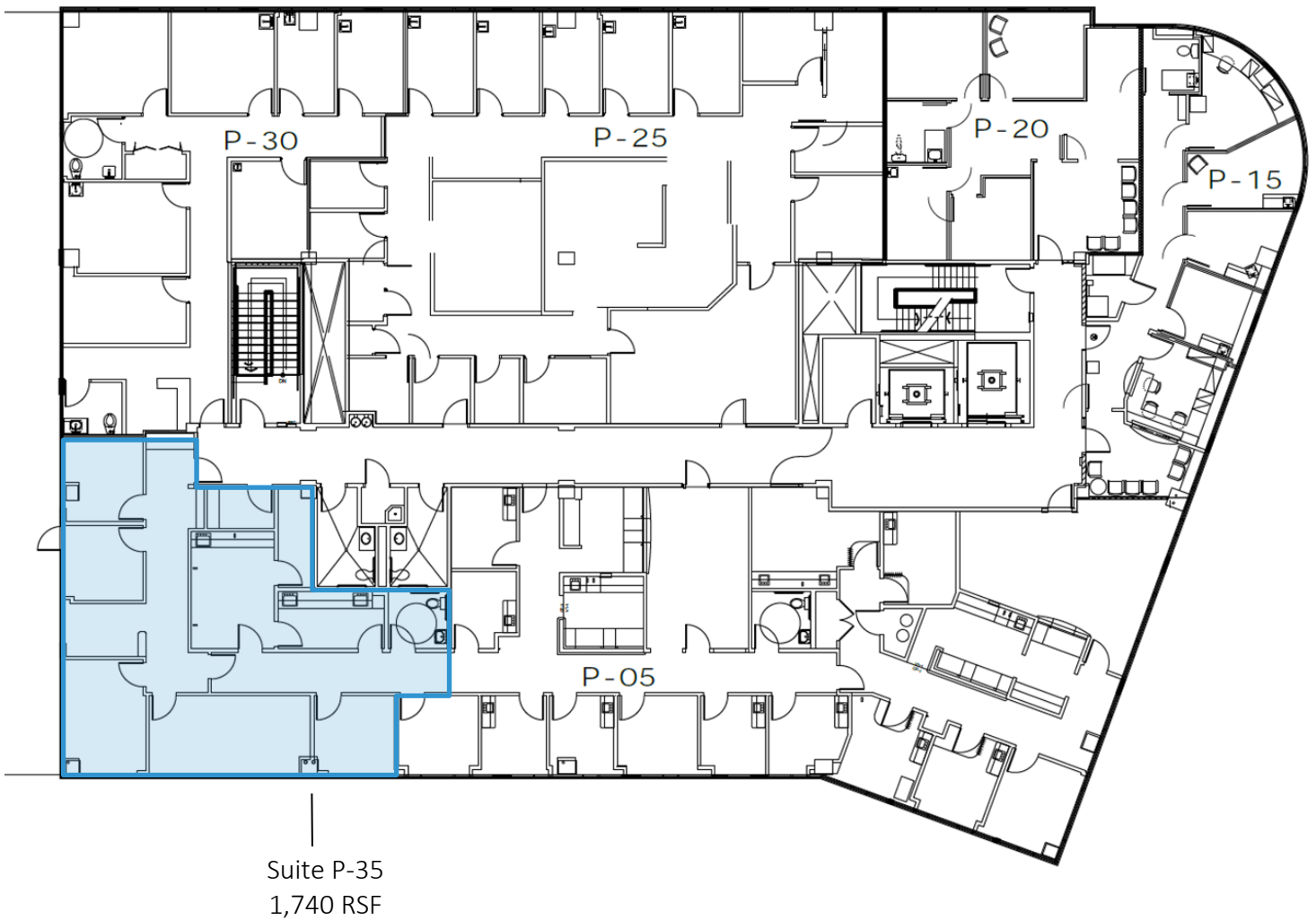
\*Available November 2024



**PMB Real Estate Services**  
*Real Estate Management Solutions for Healthcare*

San Gabriel Valley Medical Plaza

# Fourth Floor Availabilities



Suite P-35  
1,740 RSF



**PMB Real Estate Services**  
*Real Estate Management Solutions for Healthcare*

San Gabriel Valley Medical Plaza