

# Trenton Square Development

Trenton, Ohio

## Property Highlights

- + New 110+ acre mixed-use development
  - Proposed 400+ new residential units
  - 172 single family homes
  - 150 town-homes
  - 72 Duplexes
  - New city administration building with 25,000 SF state of the art YMCA
- + Traffic counts of 13,383 VPD on W State St
- + High growth area
- + 10 commercial lots available
  - Ideal for: QSR, Bank, Restaurant, Retail, Medical, Daycare
  - New traffic signal to be installed at main entrance to development
  - Great visibility and easy access on W State Street
  - Less than one mile from Edgewood High School and Intermediate School (2,840 students)

W State Street  
Trenton, Ohio 45067

[Click here for drone video](#)



## Contact Us

### John Abraham

First Vice President  
+1 513 369 1315  
[john.abraham@cbre.com](mailto:john.abraham@cbre.com)

### Lacey Kelly

Associate  
+1 513 369 1640  
[lacey.kelly@cbre.com](mailto:lacey.kelly@cbre.com)

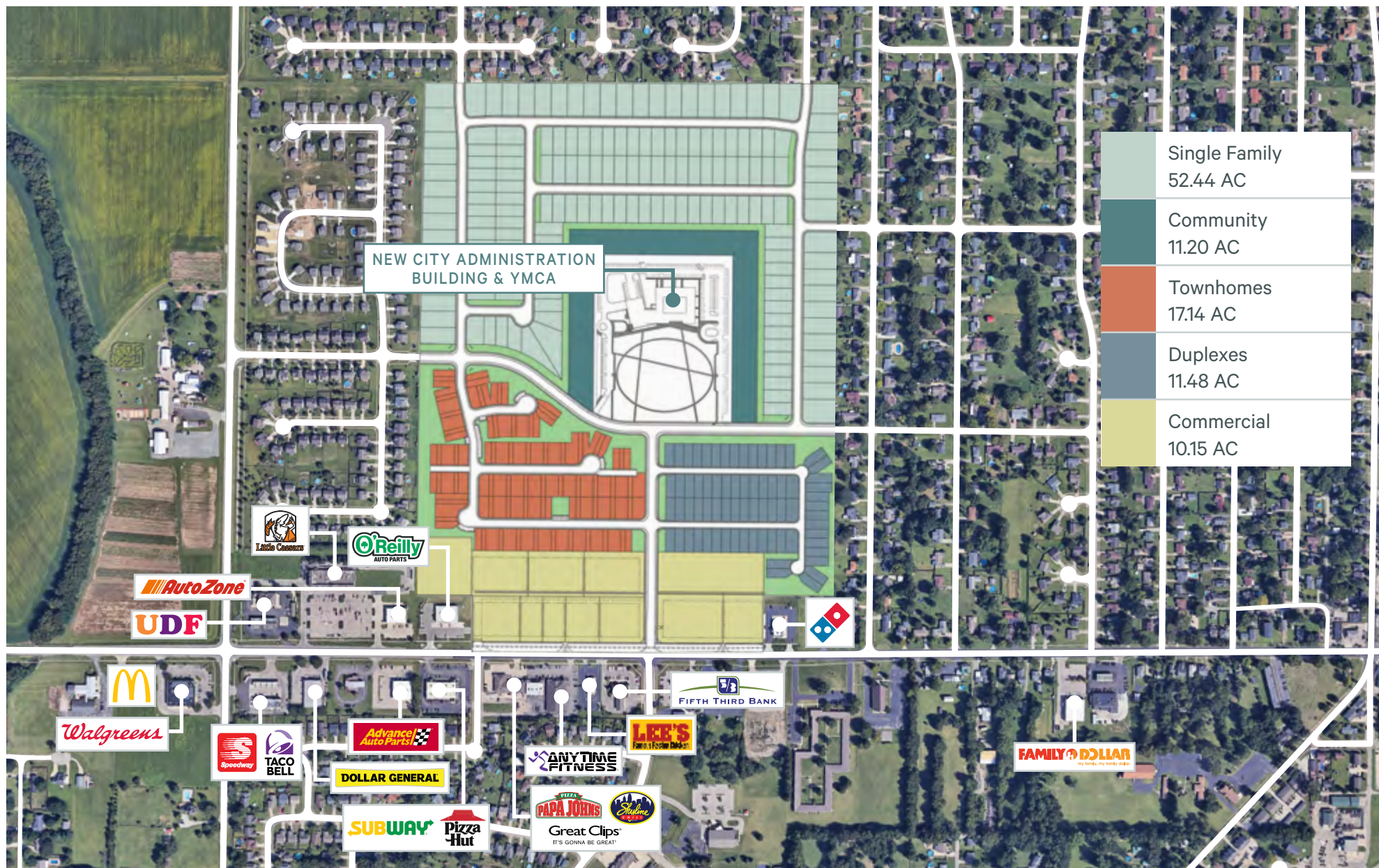
# Housing Development Map



- |   |  |
|---|--|
| 1 | Arlington Parke (Todd Homes)<br>Proposed 89 lots                 |
| 2 | Madison Manor (Cristo Homes)<br>27 lots                          |
| 3 | Mapleview Section 4 (Todd Homes)<br>89 lots                      |
| 4 | Riverview Estates (Todd Homes)<br>60 lots                        |
| 5 | Trenton Square<br>172 single family, 152 town-homes, 72 duplexes |
| 6 | Elk Creek (DR Horton)<br>189 lots                                |
| 7 | Reserve at Elk Creek (DR Horton)<br>60 homes recently completed  |



# Site Aerial



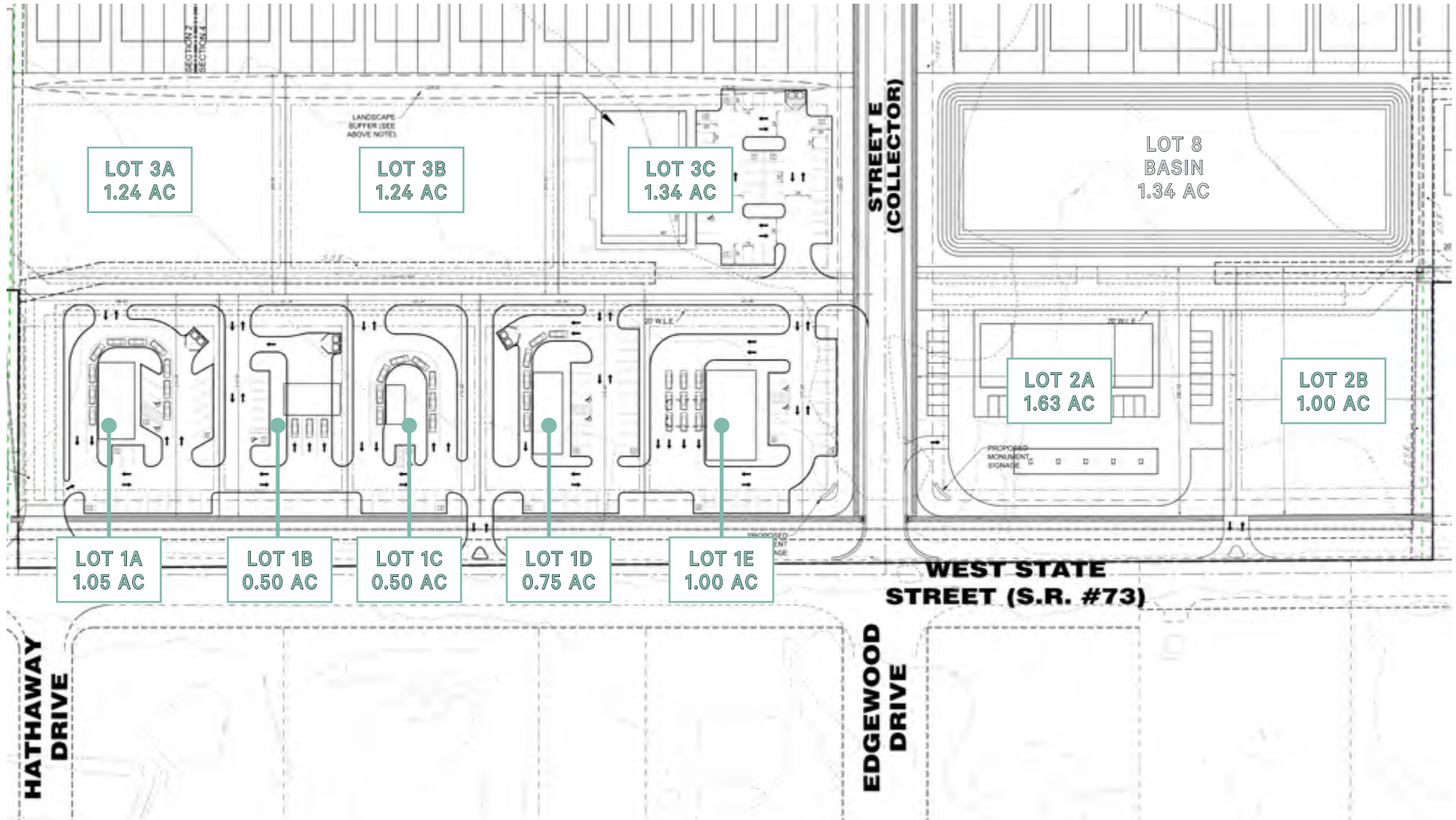


# Market Aerial



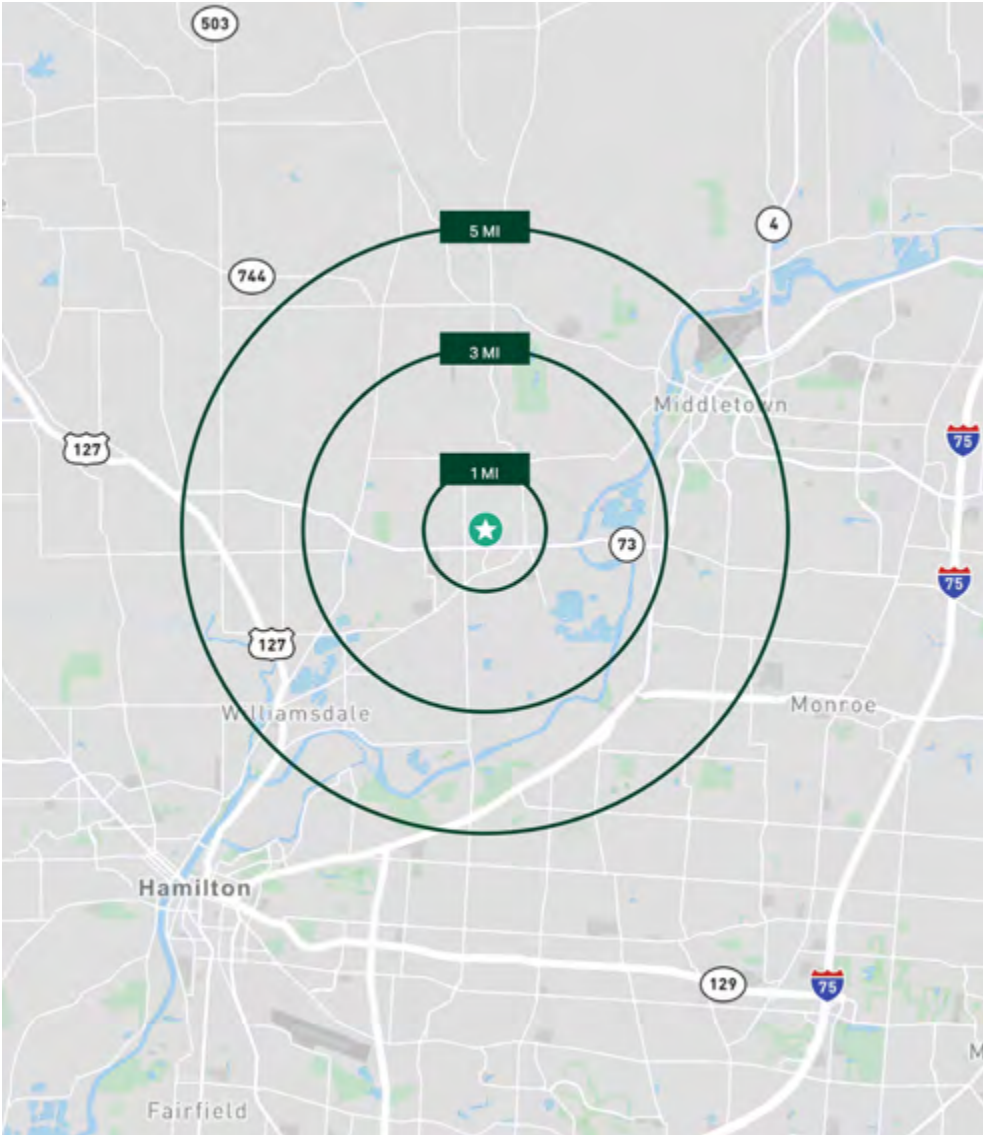


# Preliminary Concept Plan



# Market Insights

Demographics	1 Mile	3 Mile	5 Mile
Population	9,934	18,837	57,098
Daytime Population	6,226	14,220	46,912
Median Age	35.7	36.0	37.1
Households	3,591	6,721	20,759
Median Household Income	\$94,418	\$84,199	\$78,167



## Contact Us

**John Abraham**  
First Vice President  
+1 513 369 1315  
john.abraham@cbre.com

**Lacey Kelly**  
Associate  
+1 513 369 1640  
lacey.kelly@cbre.com

© 2025 CBRE, Inc. All rights reserved. This information has been obtained from sources believed reliable, but has not been verified for accuracy or completeness. You should conduct a careful, independent investigation of the property and verify all information. Any reliance on this information is solely at your own risk. CBRE and the CBRE logo are service marks of CBRE, Inc. All other marks displayed on this document are the property of their respective owners, and the use of such logos does not imply any affiliation with or endorsement of CBRE. Photos herein are the property of their respective owners. Use of these images without the express written consent of the owner is prohibited.

