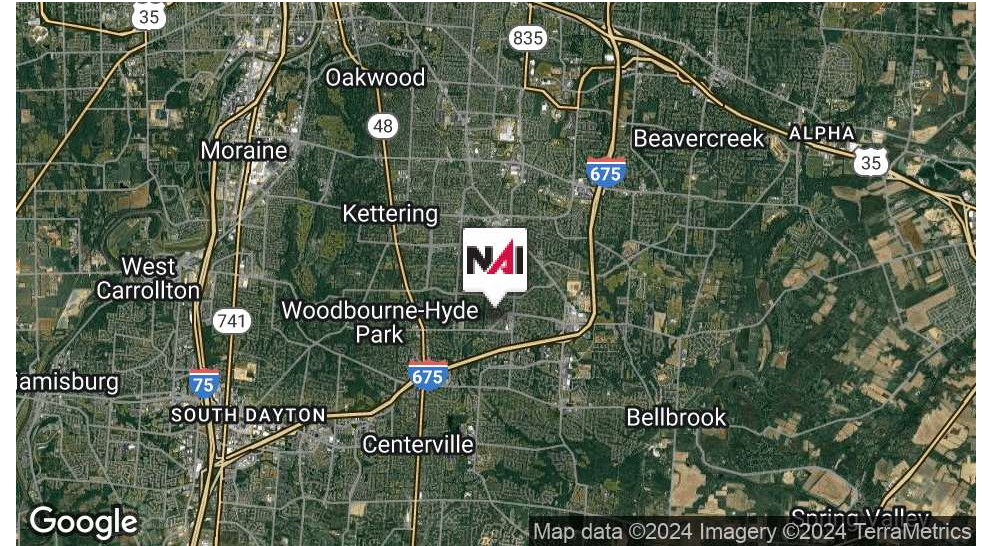


For Sale

2,800 SF/.98 Acres | \$550,000
Office Space/Land



1932 East Whipp Road

Dayton, Ohio 45440

Property Highlights

- 24 Hour Security System
- .98 Acres of Land
- Telephone System With 9 Lines
- 2 Car Garage

Property Overview

This well maintained building was built by ownership in 1980 and sits on .98 acres of developable land. The property's location delivers lasting value for office investors looking to make a strategic investment in the booming Dayton market or an owner/operator who is looking to establish their business in this thriving area.

Offering Summary

Sale Price:	\$550,000
Building Size:	2,800 SF
Available SF:	2,800 SF
Lot Size:	.98 Acres

[View Property Video](#)

For More Information

Ryan Van Dulman

O: 513 322 8328

rvandulman@bergman-group.com | OH #SAL.2023000419

For Sale

2,800 SF/.98 Acres | \$550,000

Office Space/Land



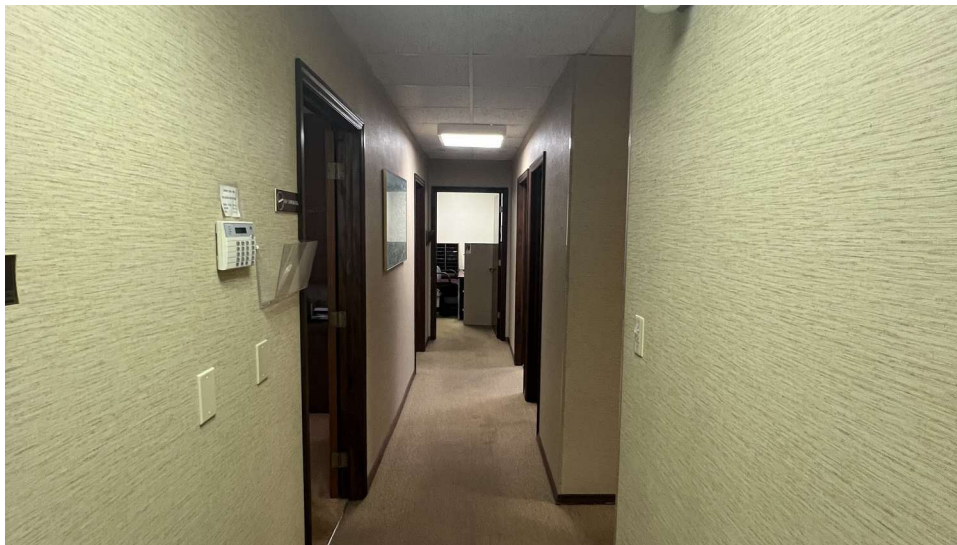
For Sale
2,800 SF/.98 Acres | \$550,000
Office Space/Land



For Sale
2,800 SF/.98 Acres | \$550,000
Office Space/Land



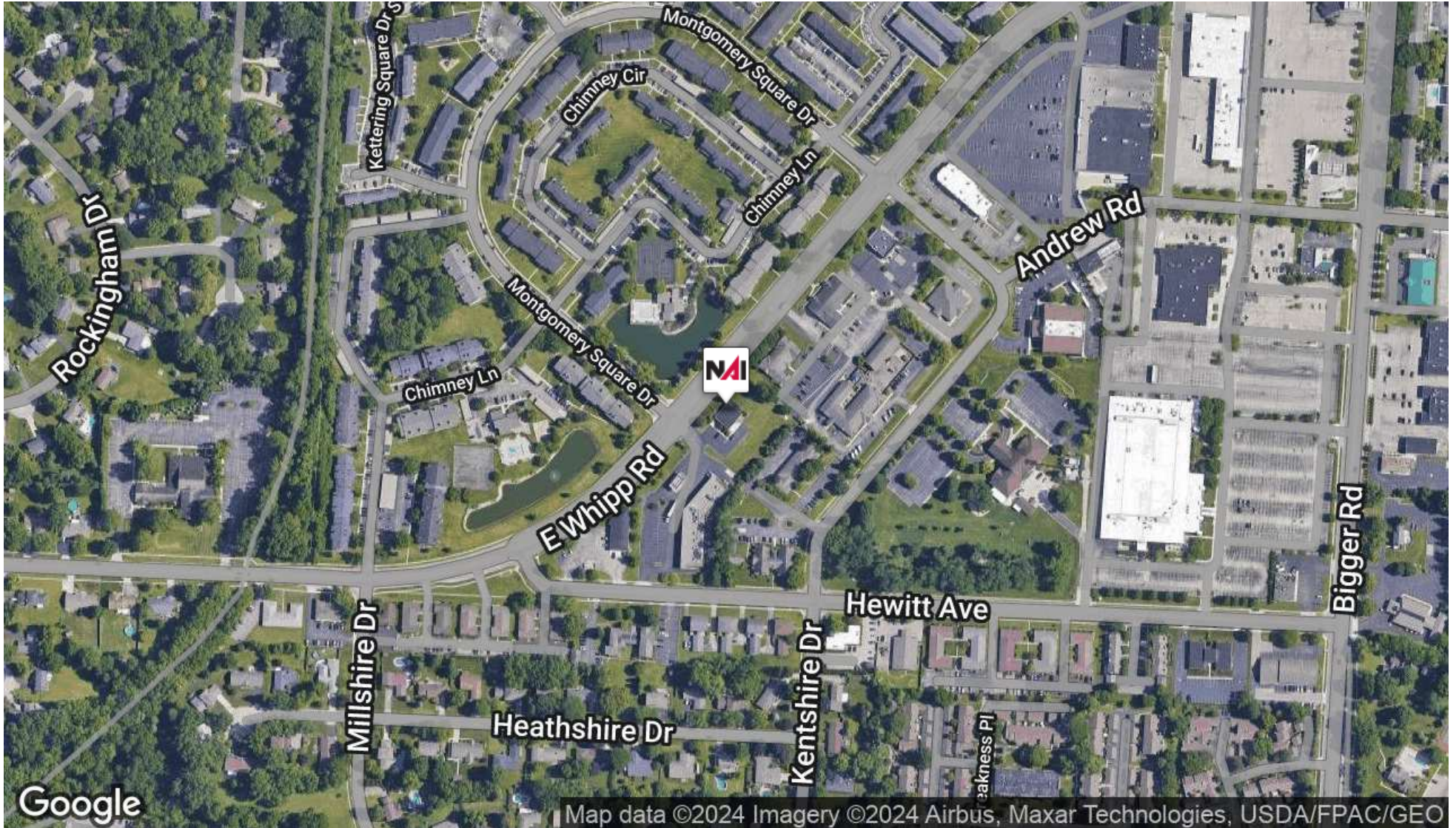
For Sale
2,800 SF/.98 Acres | \$550,000
Office Space/Land



For Sale

2,800 SF/.98 Acres | \$550,000

Office Space/Land



Google

Map data ©2024 Imagery ©2024 Airbus, Maxar Technologies, USDA/FPAC/GEO

For Sale
 2,800 SF | \$550,000
 Office Space

Population	0.3 Miles	0.5 Miles	1 Mile
Total Population	1,434	3,982	10,797
Average Age	35	38	43
Average Age (Male)	34	37	41
Average Age (Female)	35	39	44

Households & Income	0.3 Miles	0.5 Miles	1 Mile
Total Households	642	1,817	5,066
# of Persons per HH	2.2	2.2	2.1
Average HH Income	\$74,046	\$81,645	\$91,252
Average House Value	\$236,460	\$252,017	\$261,360

Demographics data derived from AlphaMap

