

190 HWY 641 N
CAMDEN, TN 38320



36,104 SF AVAILABLE
OUT-PARCELS AVAILABLE

FOR LEASE

JABE
COMPANIES

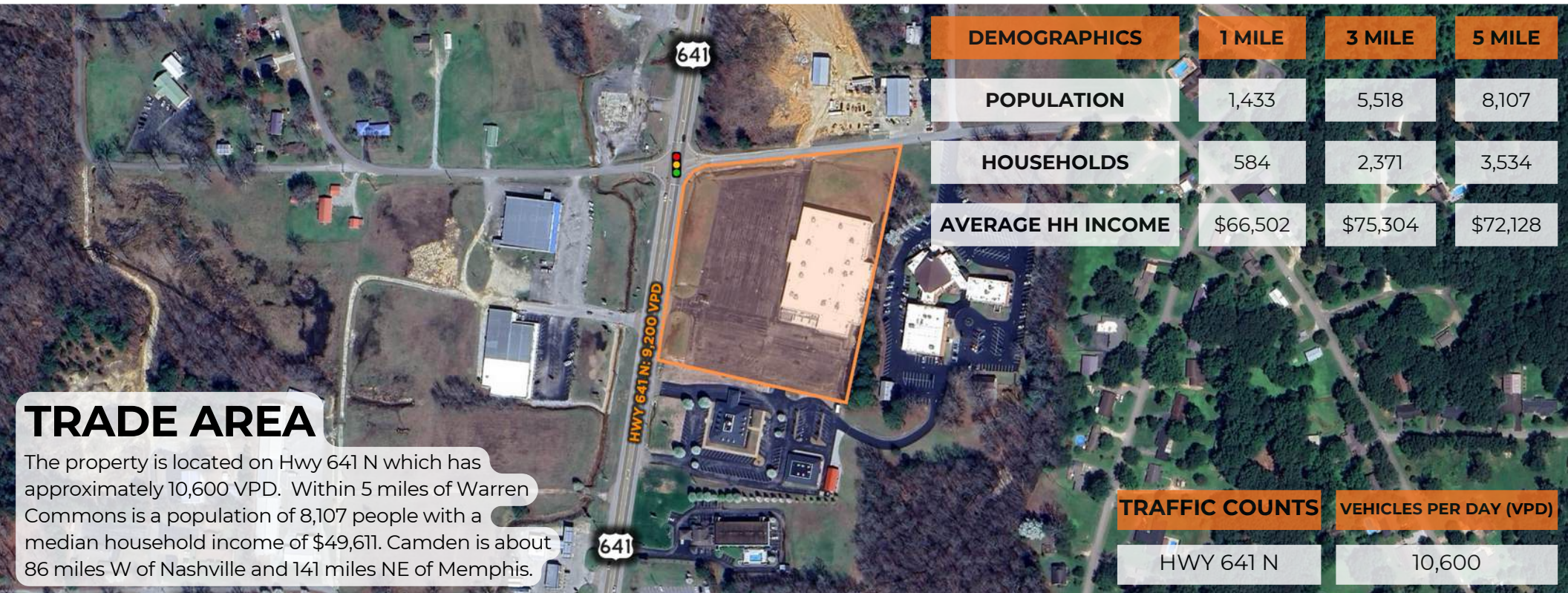
James Wilding Jr.
(412) 606-9795
jw@jabecompanies.com

(412) 212-1270
www.jabecompanies.com

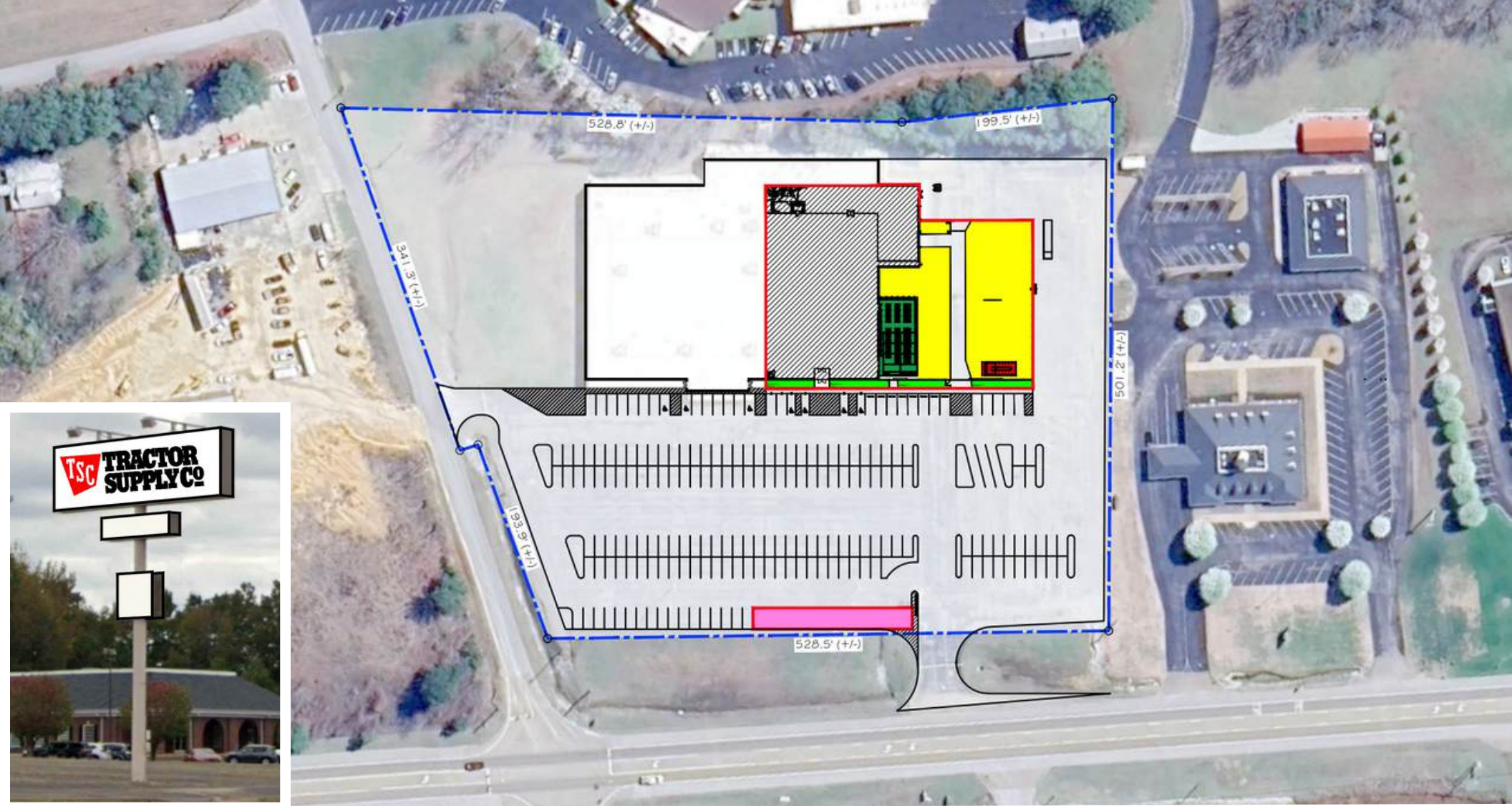


PROPERTY OVERVIEW

This 60,000 SF shopping center is situated amongst numerous other retailers including Dollar General, Family Dollar, AutoZone, and O'Reilly Auto Parts. Nearby food and convenience include Casey's, Taco Bell, Burger King, Wendy's, and McDonald's. There is 38,000 SF available for lease and out-parcels available for ground lease.







JABE COMPANIES

COMMERCIAL REAL ESTATE

LOCATIONS

PITTSBURGH OFFICE

739 Washington Avenue
Carnegie, PA 15106

MORGANTOWN OFFICE

235 High Street, Suite 501
Morgantown, WV 26505

LISTING AGENTS



JAMES WILDING JR.



O: (412) 212-1270 ext. 101
M: (412) 606-9795

PRESIDENT



jw@jabecompanies.com



RICH CHURCHFIELD



O: (412) 212-1270 ext. 105
M: (412) 401-3996

VICE PRESIDENT



rc@jabecompanies.com



MICHELE SIPE



O: (412) 212-1270 ext. 110
M: (412) 430-1796

SALES & LEASING



msipe@jabecompanies.com

CONTACT US

(412) 212-1270 | admin@jabecompanies.com | www.jabecompanies.com

ACQUISITIONS
& DISPOSITIONS

TENANT & LANDLORD
REPRESENTATION

SITE SELECTION
& DEVELOPMENT



Founded in 2001, Jabe Companies LLC has been working with prominent retailers and developers nationwide for over 20 years. Based out of Carnegie, just outside of Pittsburgh, Pennsylvania, Jabe Companies pairs cutting-edge technology with an old-school, boots-on-the-ground model.

Jabe Companies deals in acquisitions, dispositions, brokerage, site selection, consultation, and development. Our brokers and leasing agents strive to find the perfect solution for each and every unique client.

As a member of TCN Worldwide, Jabe Companies is part of an alliance of top independent brokerage firms serving more than 200 markets across the country, allowing our reach to expand far beyond just Western Pennsylvania.

JABE
COMPANIES

TCN
WORLDWIDE
REAL ESTATE SERVICES

Cicsc