

FOR LEASE



METROPOLITAN PACIFIC
REAL ESTATE GROUP



225 Arizona Avenue, PH 450

Prime Space with Large Private Terrace Downtown Santa Monica

- 2,645 rsf AVAILABLE IMMEDIATELY
- Large private terrace overlooking Third Street Promenade and the Santa Monica Mountains
- NW Corner of Third Street Promenade and Arizona Avenue
- Walkscore 94/100 'Walker's Paradise'
- Outstanding local amenities, including world-class restaurants, retail, and hotels nearby
- 5 min walk to Expo Line's Downtown Santa Monica station
- In-building and ample nearby public parking available
- 2-3 year lease term preferred (shorter terms will be considered)
- Rental Rate: Call

CONTACT

310 395 7300

METROPOLITAN PACIFIC

DRE #01395401

Gary Steinhardt

DRE #02151907

gsteinhardt@metpac.com

John Warfel

DRE# 01184386

jwarfel@metpac.com

REPRESENTED BY METROPOLITAN COMMERCIAL REAL ESTATE SERVICES

Please do not disturb existing tenant. Shown by appointment only.

225 Arizona Avenue, PH 450

Prime High Image Office Space in Downtown Santa Monica



CONTACT

310 395 7300

METROPOLITAN PACIFIC

DRE #01395401

Gary Steinhardt

DRE #02151907

gsteinhardt@metpac.com

John Warfel

DRE# 01184386

jwarfel@metpac.com

REPRESENTED BY METROPOLITAN COMMERCIAL REAL ESTATE SERVICES

Please do not disturb existing tenant. Shown by appointment only.

**225 Arizona
Avenue,
PH 450**

**Turnkey Prime
Office Space**

3 Private Offices

**2 Conference
Rooms or
bullpens**



MP METROPOLITAN PACIFIC
REAL ESTATE GROUP

CONTACT

310 395 7300

METROPOLITAN PACIFIC

DRE #01395401

Gary Steinhardt

DRE #02151907

gsteinhardt@metpac.com

John Warfel

DRE# 01184386

jwarfel@metpac.com

REPRESENTED BY METROPOLITAN COMMERCIAL REAL ESTATE SERVICES

Please do not disturb existing tenant. Shown by appointment only.

225 Arizona Avenue, PH 450

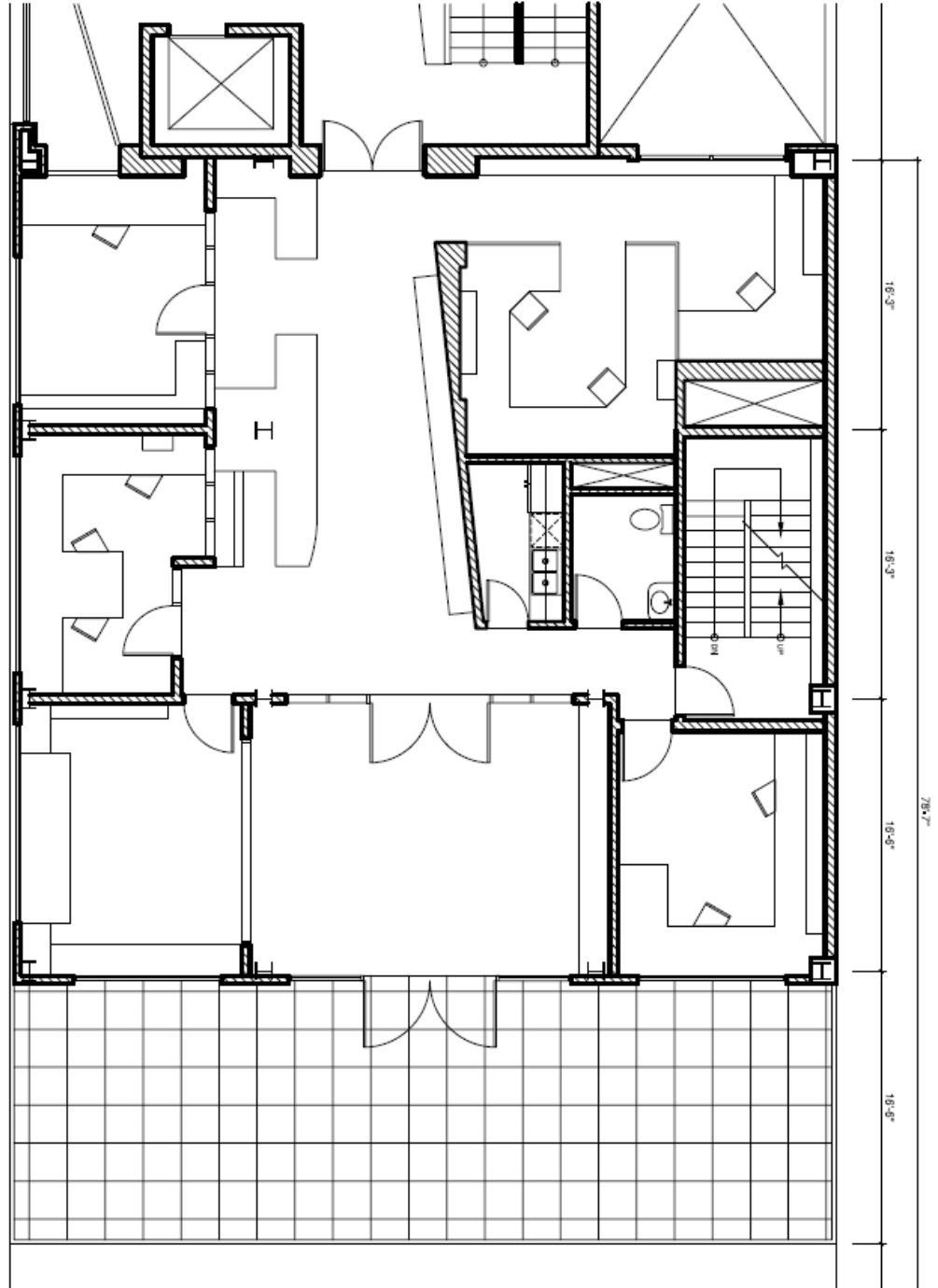
**Turnkey Prime
Office Space**

**Wood and
carpet flooring**

Private Bath

Terrace

**Ocean breezes
and Third Street
Promenade
views**



CONTACT

310 395 7300

METROPOLITAN PACIFIC

DRE #01395401

Gary Steinhardt

DRE #02151907

gsteinhardt@metpac.com

John Warfel

DRE# 01184386

jwarfel@metpac.com

REPRESENTED BY METROPOLITAN COMMERCIAL REAL ESTATE SERVICES

Please do not disturb existing tenant. Shown by appointment only.