



FOR LEASE 13,288 SF

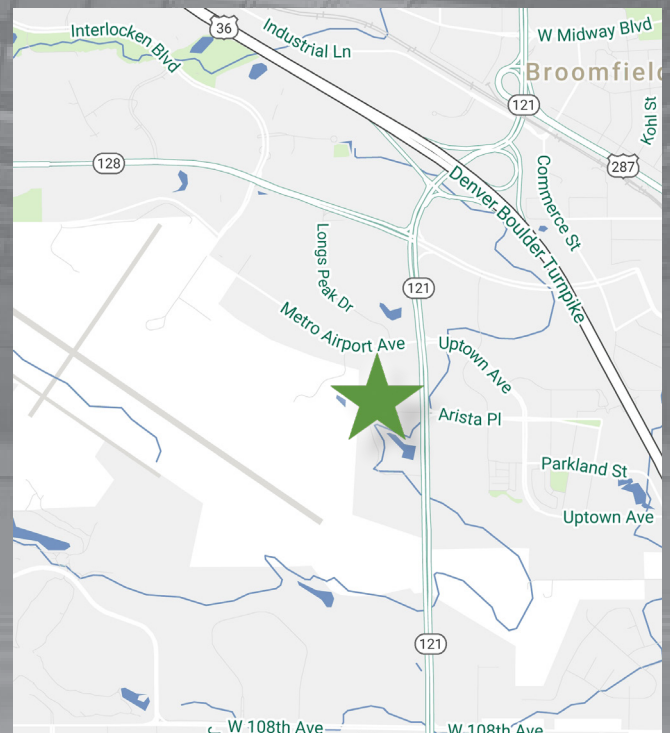
Skyway Corporate Center - Building B

8820 W. 116th Circle, Suites C & D, Broomfield, Colorado 80021

Skyway Corporate Center is a master planned business park located on Wadsworth Blvd. in the heart of metro Denver's dynamic northwest market. The project offers contemporary architectural design in a beautiful natural setting for a broad mix of professional, technical, light industrial and showroom commercial users. This project is strategically located off of US Highway 36 (Denver-Boulder Turnpike) and adjacent to Arista, the Broomfield Event Center, Rocky Mountain Metropolitan Airport (formerly Jeffco) and Interlocken.

Highlights

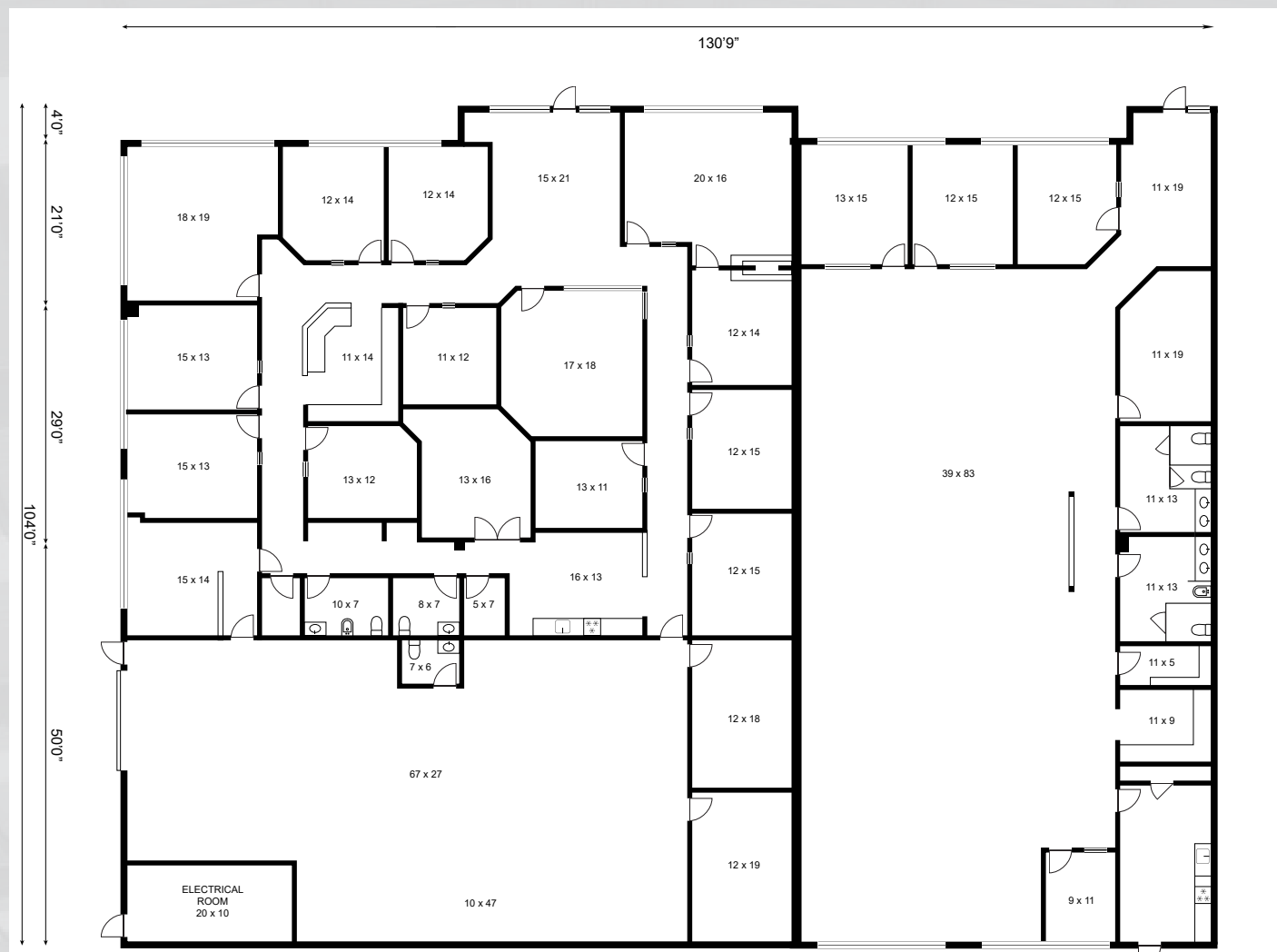
Available SF:	±13,288 SF
Office SF:	±10,452 SF
Loading:	(1) Drive-in door
Clear Height:	±16'
Sprinkler:	Yes
Power:	200A; 480V (To be verified by an electrician)
Zoning:	I-1 PUD (City of Broomfield)
2024 CAM:	\$7.40/SF (estimate)
Base Rent:	\$11.95/SF NNN



Skyway Corporate Center - Building B

8820 W. 116th Circle, Suites C & D, Broomfield, Colorado 80021

Space Plan



Skyway Corporate Center - Building B Boulder, Colorado

8820 W. 116th Circle, Suites C & D, Broomfield, Colorado 80021



Broker Contact

Bill Thompson
(720) 528-6373
bill.thompson@cbre.com

Tyler Carner
(303) 264-1903
tyler.carner@cbre.com

Jeremy Kroner
(303) 264-1916
jeremy.kroner@cbre.com

CBRE www.cbre.com

Owner Contact

John Strabel
Regional Director
8200 Park Meadows Drive, Unit 8226
Lone Tree, CO 80124
Direct: (248) 894-3974
jstrabel@firstindustrial.com



www.firstindustrial.com