

For Sale

Prime Magic Valley
Development Opportunity

21371 Hwy 30 | Twin Falls, ID

Tami Walker

208 420 4601

tami.walker@colliers.com

Jerrika Gonzalez

208 344 6516

jerrika.gonzalez@colliers.com

Colliers

Accelerating success.



Property Overview

Property Type	Land
Land Size	6.0 Acres
Building Size	2,336 SF Warehouse
Parcel #	RP10S16E140755A and a portion of RP10S16E140620A
Location	Just to the east of A Dog's Den
Zoning	Commercial

Demos

	1 Miles	3 Miles	5 Miles
Population	411	11,481	52,304
Households	170	4,132	19,501
Avg. HH Income	\$103,341	\$76,832	\$77,158

Price \$1,390,000.00

Key Highlights

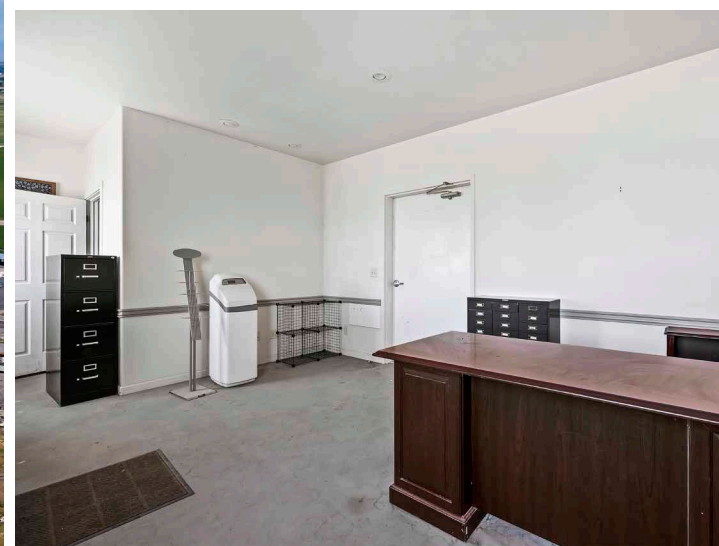
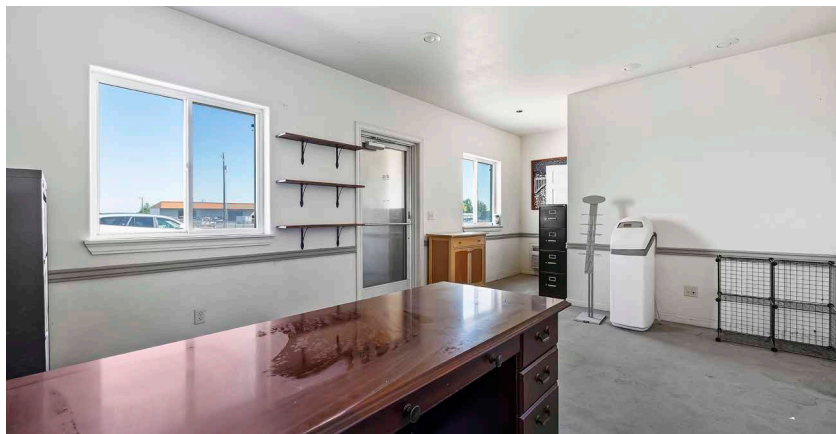
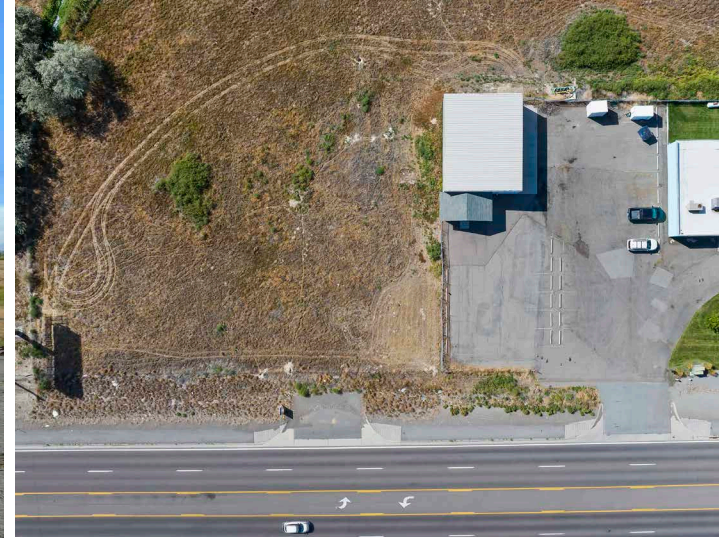
Land

- Property located between Twin Falls and Filer - great development property
- Truck route with easy access to Hwy 93 and I-84
- Buyer may purchase between 6 - 11 acres - price reflects 6 acres with warehouse
- 10,500 VPD on Hwy 30

2,336 SF Warehouse

- 18 FT clearspan
- 3 overhead doors; 2-8 ft doors and 1-10 ft door
- Office

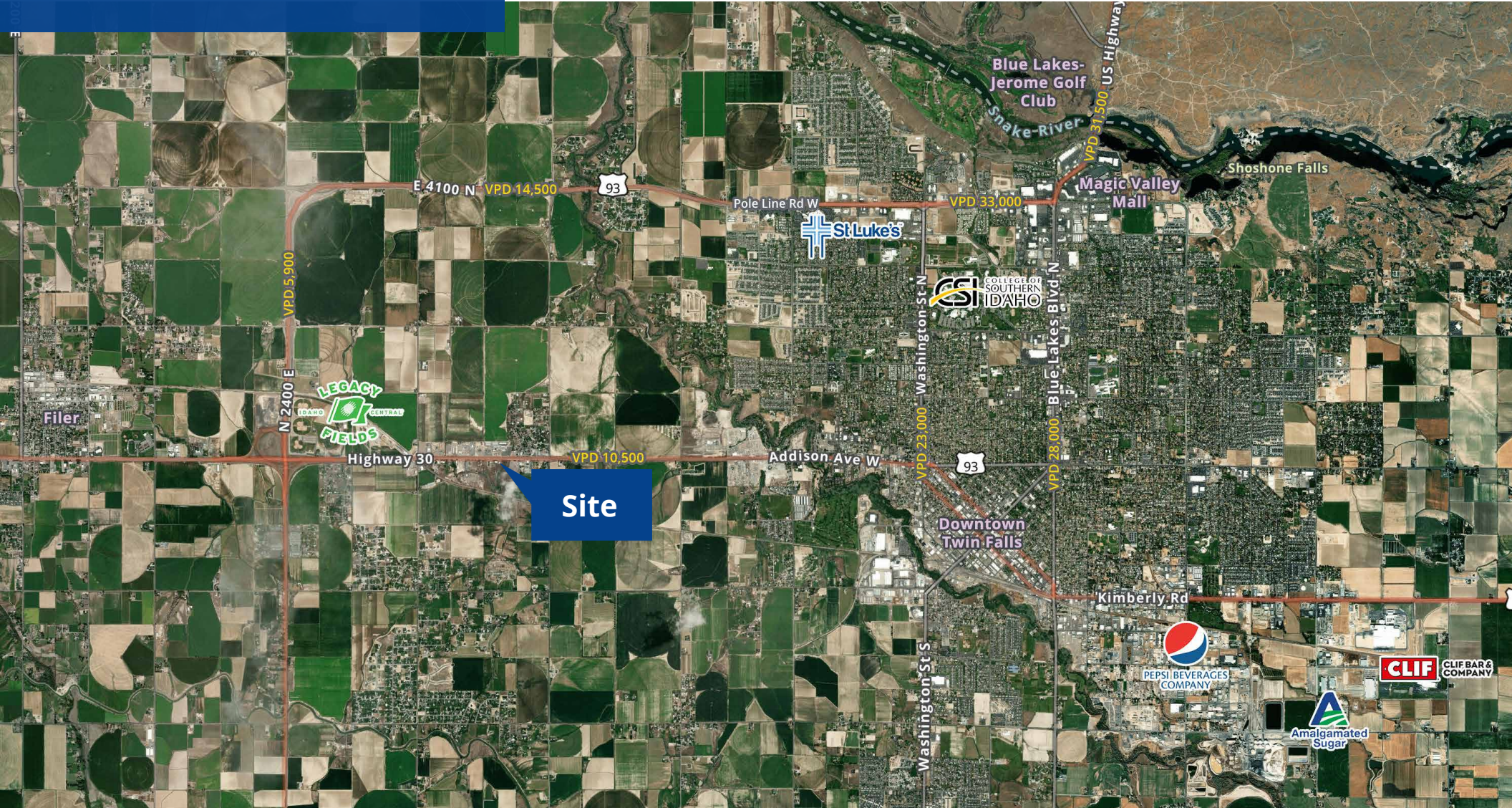
Property Photos



Location

 [Google Map](#)

 [Street View](#)



205 Shoshone Street N, Suite 201
Twin Falls, Idaho 83301
208 910 2006
colliers.com/idaho

This document has been prepared by Colliers for advertising and general information only. Colliers makes no guarantees, representations or warranties of any kind, expressed or implied, regarding the information including, but not limited to, warranties of content, accuracy and reliability. Any interested party should undertake their own inquiries as to the accuracy of the information. Colliers excludes unequivocally all inferred or implied terms, conditions and warranties arising out of this document and excludes all liability for loss and damages arising there from. This publication is the copyrighted property of Colliers and/or its licensor(s). © 2024. All rights reserved. This communication is not intended to cause or induce breach of an existing listing agreement. Colliers Magic Valley, LLC.