



For Lease

# Pease Office Space

## Tim Braseth

Associate  
+1 310 720 9994  
tim.braseth@colliers.com



210 Commerce Way, Suite 350  
Portsmouth, NH 03801  
+1 603 433 7100  
colliersnh.com

## 282 Corporate Dr, Suites 1 & 2 Portsmouth, NH

### Property Highlights

- 2 newly refurbished office suites are available for lease in the former Pease Officers Club and law office of Shaines & McEachern building
- Suite 1 is 3,250± SF consisting of 7 offices (1 with a non-working fireplace), 2 conference rooms, a kitchenette, and 2 private restrooms; a side entrance leads to an outdoor patio
- Suite 2 is 3,365± SF consisting of a large open area, reception, 7 offices, common conference room, and 2 private restrooms
- Building will be the new home of Great Circle Catering, a food provider for Port City Air and other corporate customers
- Located by the rear entrance to the Pease International Tradeport, close to all of the amenities that Pease has to offer, and just a short 10 minute drive to downtown Portsmouth, NH

Information herein has been obtained from sources deemed reliable, however its accuracy cannot be guaranteed by Colliers International | New Hampshire & Maine. The user is required to conduct their own due diligence and verification. Colliers International | New Hampshire & Maine is independently owned and operated.

The Crossing

Portsmouth & Traffic Circle

For Lease

Mall at Fox Run

EXIT 1

16

4

95

Corporate Drive

EXIT 4



LONZA



Newington Street



New Hampshire Avenue



## Specifications

Address:	282 Corporate Drive
Location:	Portsmouth, NH 03801
Building Type:	Office/mixed-use
Total Building SF:	15,208±
Available SF:	Suite 1: 3,250± Suite 2: 3,365±
Utilities:	Municipal water & sewer Natural gas
Zoning:	ABC
Parking:	Ample on-site
2024 NNN Expenses:	\$13.52 PSF • CAM: \$11.36 • Taxes: \$2.16
Accessibility:	By the rear entrance of the Pease International Tradeport, close to all of the amenities of Pease & just a 10 minute drive to downtown
Lease Rate:	\$7.00 NNN



Suite 1

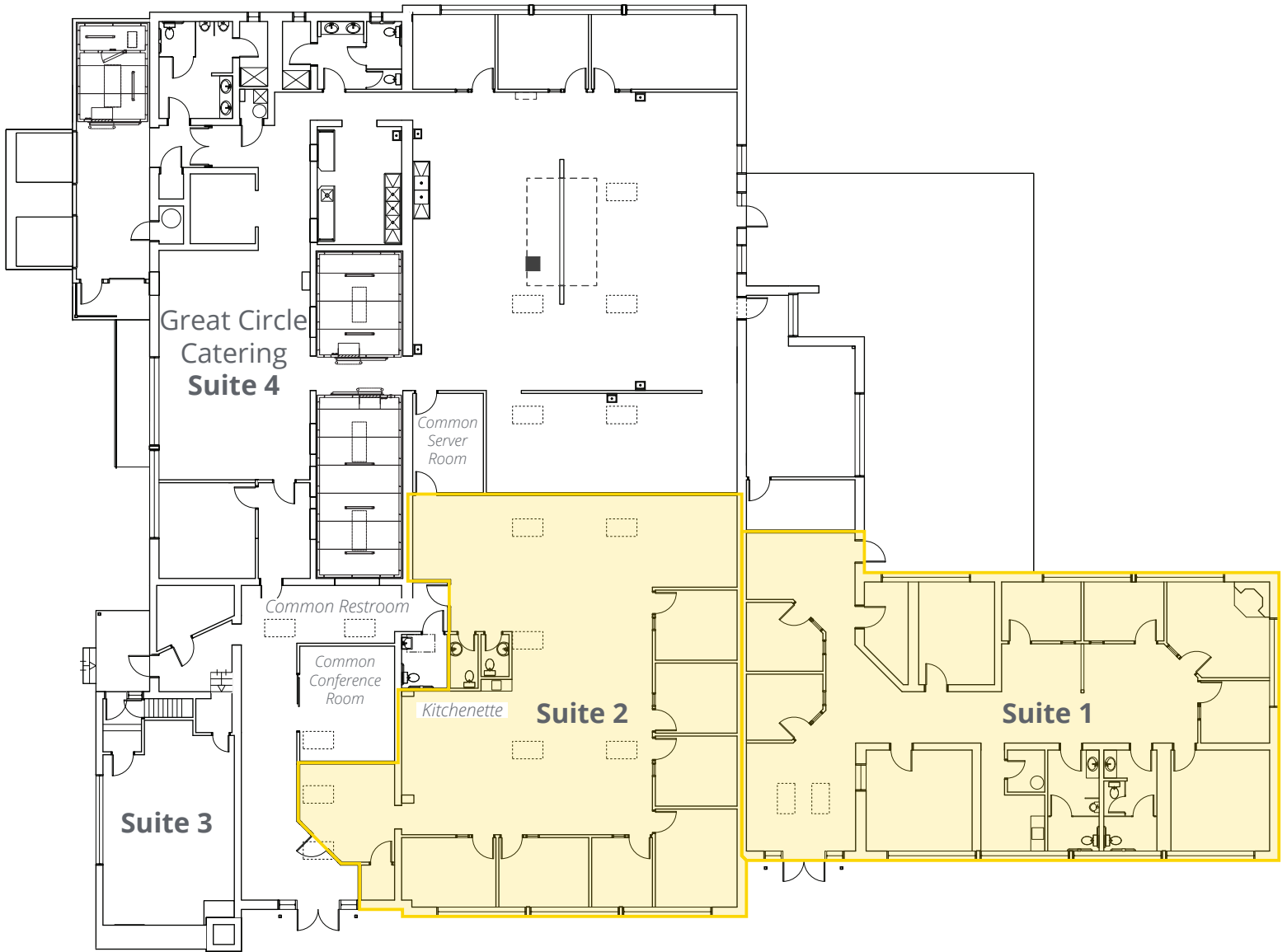
### Contact us:

**Tim Braseth**  
Associate  
+1 310 720 9994  
tim.braseth@colliers.com



210 Commerce Way, Suite 350, Portsmouth, NH 03801  
+1 603 433 7100 | colliersnh.com

# Floor Plan



2 GROUND FLOOR  
SCALE: 1/8" = 1'-0"

Available Space