

Occidental BUSINESS PARK

2454 Occidental Ave S Seattle, WA

FOR LEASE
20,400 SF



THE ANDOVER
COMPANY, INC.

CORFAC INTERNATIONAL



GEORGE ROCKWELL, SIOR
(206) 336-5328
grockwell@andoverco.com

SHANE MAHVI
(206) 336-5338
smahvi@andoverco.com

Occidental Business Park Building 1 - Office

2454 Occidental Ave S
Seattle, WA

20,400 SF of built-out office space

High car parking ratio

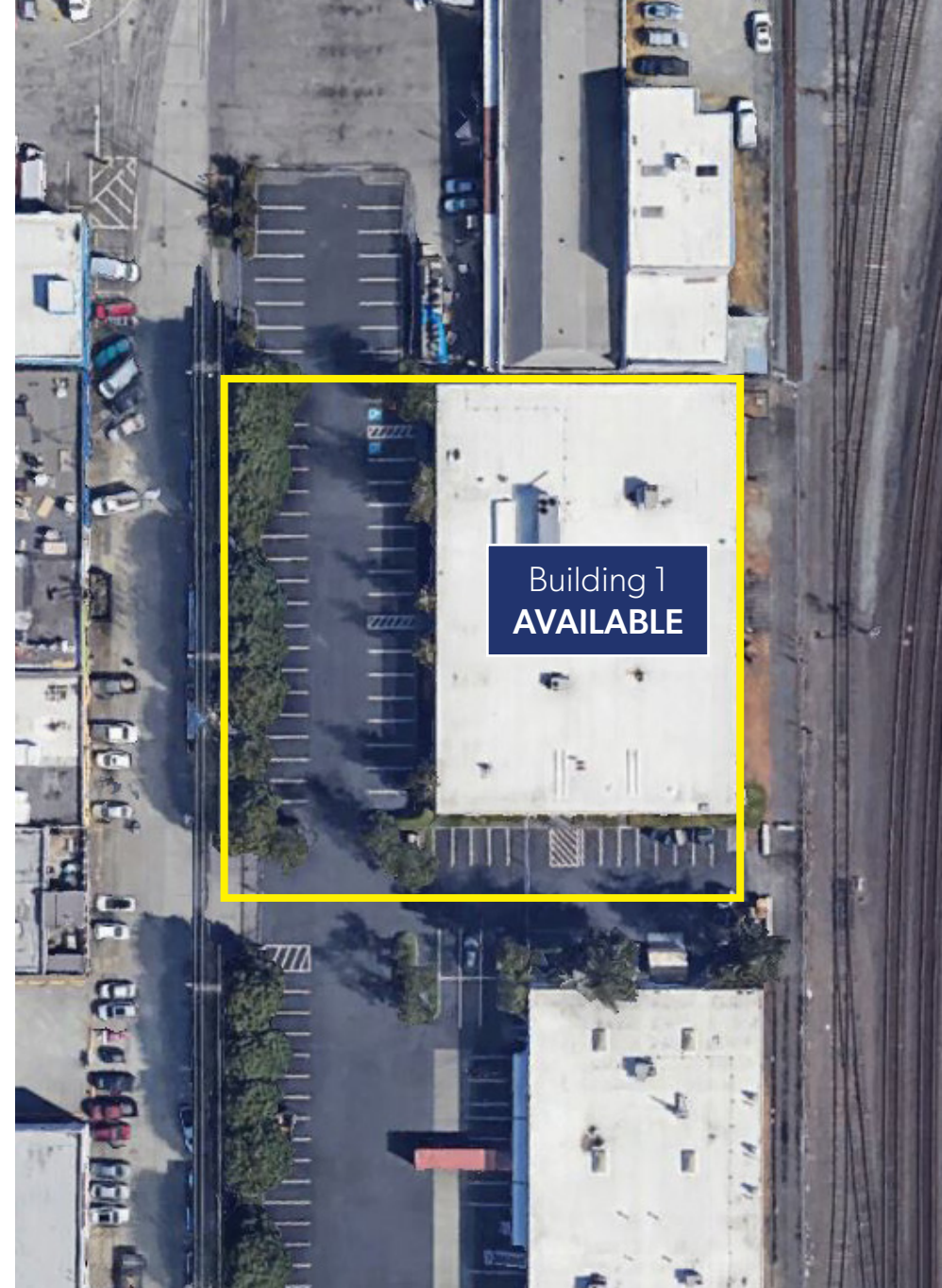
Flexible building modifications, landlord
can reconfigure the interior to suit tenant
requirements

16' - 18' clear height to the underside of the roof

Fenced/secured building and parking area

Available now

\$0.70/SF/Mo + NNN



The information contained herein has been obtained from reliable sources, but is not guaranteed. A prospective buyer/tenant should verify each item relating to this property and all information contained herein.

George Rockwell, SIOR
(206) 336-5328
grockwell@andoverco.com

Shane Mahvi
(206) 336-5338
smahvi@andoverco.com

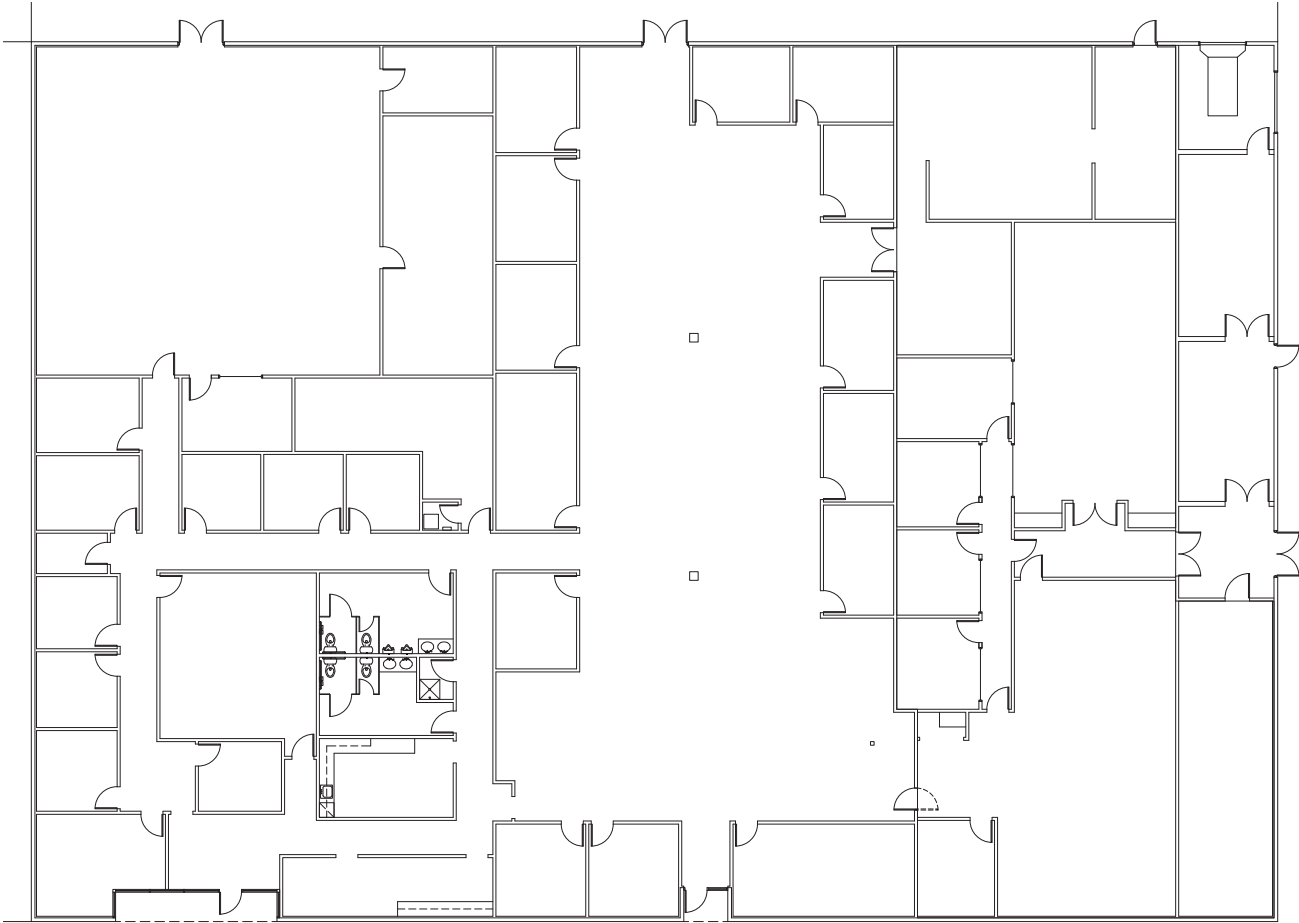
 **THE ANDOVER
COMPANY, INC.**
CORFAC INTERNATIONAL



Occidental Business Park

Building 1 - Office

2454 Occidental Ave S
Seattle, WA



Flexible building modifications, landlord can reconfigure the interior to suit tenant requirements

The information contained herein has been obtained from reliable sources, but is not guaranteed. A prospective buyer/tenant should verify each item relating to this property and all information contained herein.

George Rockwell, SIOR
(206) 336-5328
grockwell@andoverco.com

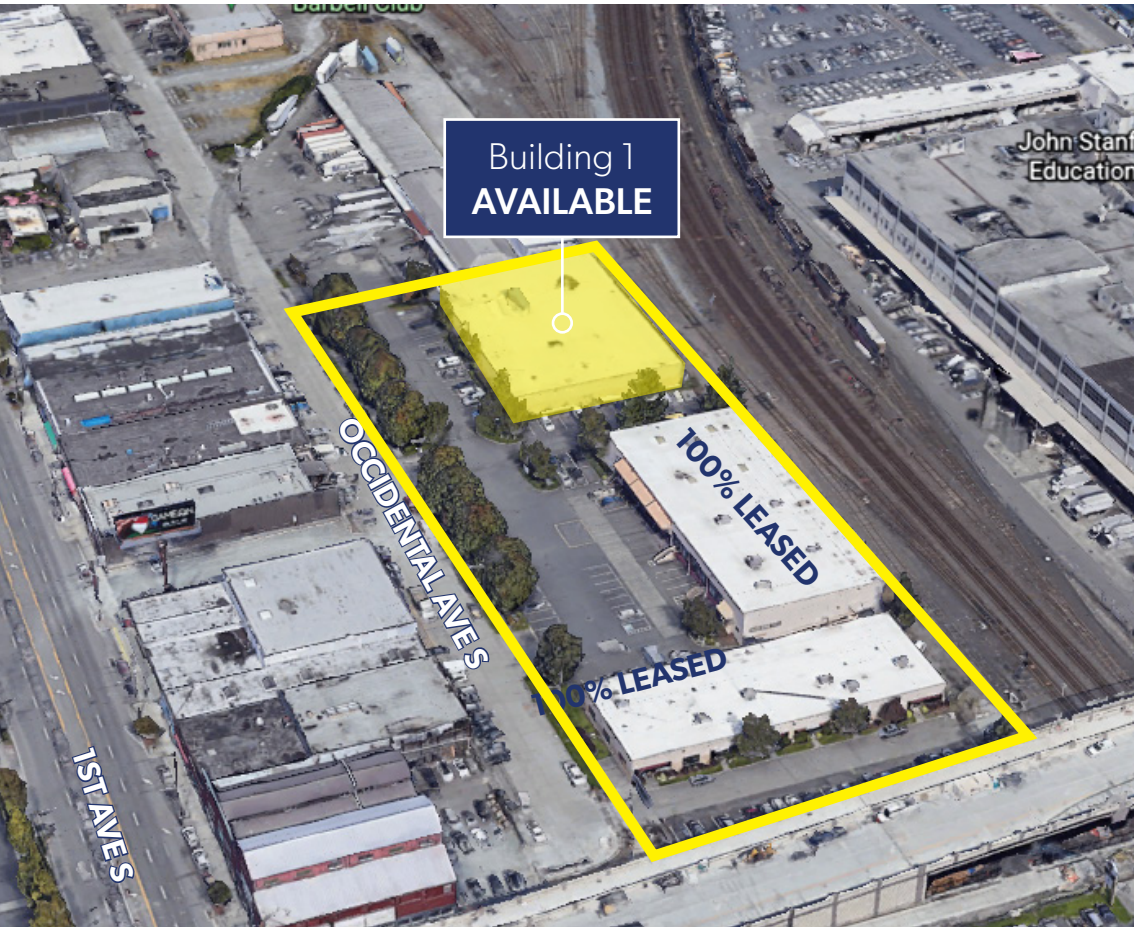
Shane Mahvi
(206) 336-5338
smahvi@andoverco.com

**THE ANDOVER
COMPANY, INC.**
CORFAC INTERNATIONAL



Occidental Business Park Building 1 - Office

2454 Occidental Ave S
Seattle, WA



The information contained herein has been obtained from reliable sources, but is not guaranteed. A prospective buyer/tenant should verify each item relating to this property and all information contained herein.

George Rockwell, SIOR
(206) 336-5328
grockwell@andoverco.com

Shane Mahvi
(206) 336-5338
smahvi@andoverco.com

**THE ANDOVER
COMPANY, INC.**
CORFAC INTERNATIONAL

