

**SELLER FINANCING
AVAILABLE**



AVAILABLE FOR SALE

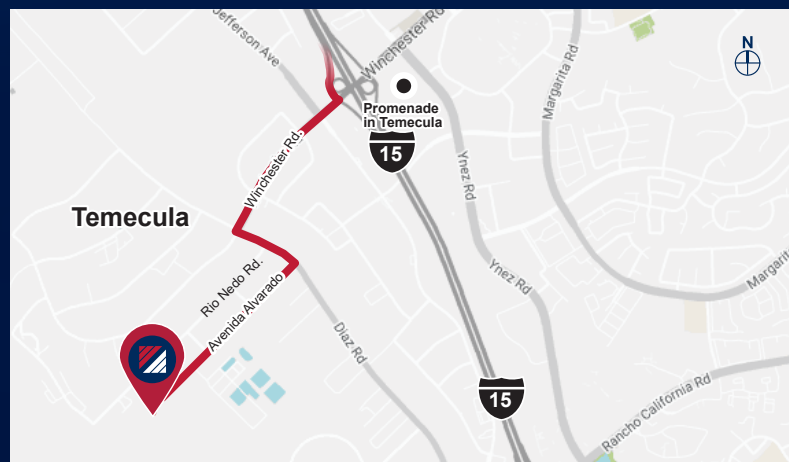
MS MOUNTAIN VIEW BUSINESS PARK

BLDG. **19**
NINETEEN

4 2 6 6 1 A V E N I D A A L V A R A D O | T E M E C U L A | C A

PROPERTY HIGHLIGHTS

- ±22,679 SF Freestanding Industrial Building For Sale
- Office = ±1,536 SF
- Warehouse = ±21,143 SF
- 27 Parking Spaces
- 277/480 volts, 800 AMPS
- ±24' Clear Height
- ESFR K25/20-PSI Sprinklers
- 2 Dock High Doors (9'x10')
- 1 Ground Level Door (12'x15')
- Zoned: Light Industrial
- Secured Yard
- Ready for Immediate Occupancy



FOR MORE INFORMATION, CONTACT:

NOAH SAMARIN

P: 909.912.0007 | M: 714.812.1289
noah.samarin@daumcommercial.com
CADRE #01755814

NICK CANTU

P: 909.652.9054 | M: 714.787.9454
ncantu@daumcommercial.com
CADRE #02016719



Although all information is furnished regarding for sale, rental or financing is from sources deemed reliable, such information has not been verified and no express representation is made nor is any to be implied as to the accuracy thereof, and it is submitted subject to errors, omissions, changes of price, rental or other conditions, prior sale, lease or financing, or withdrawal without notice. All Maps provided courtesy of Google Maps, Bing Maps, and Google Earth. D/AQ Corp. # 01129558

AVAILABLE FOR SALE

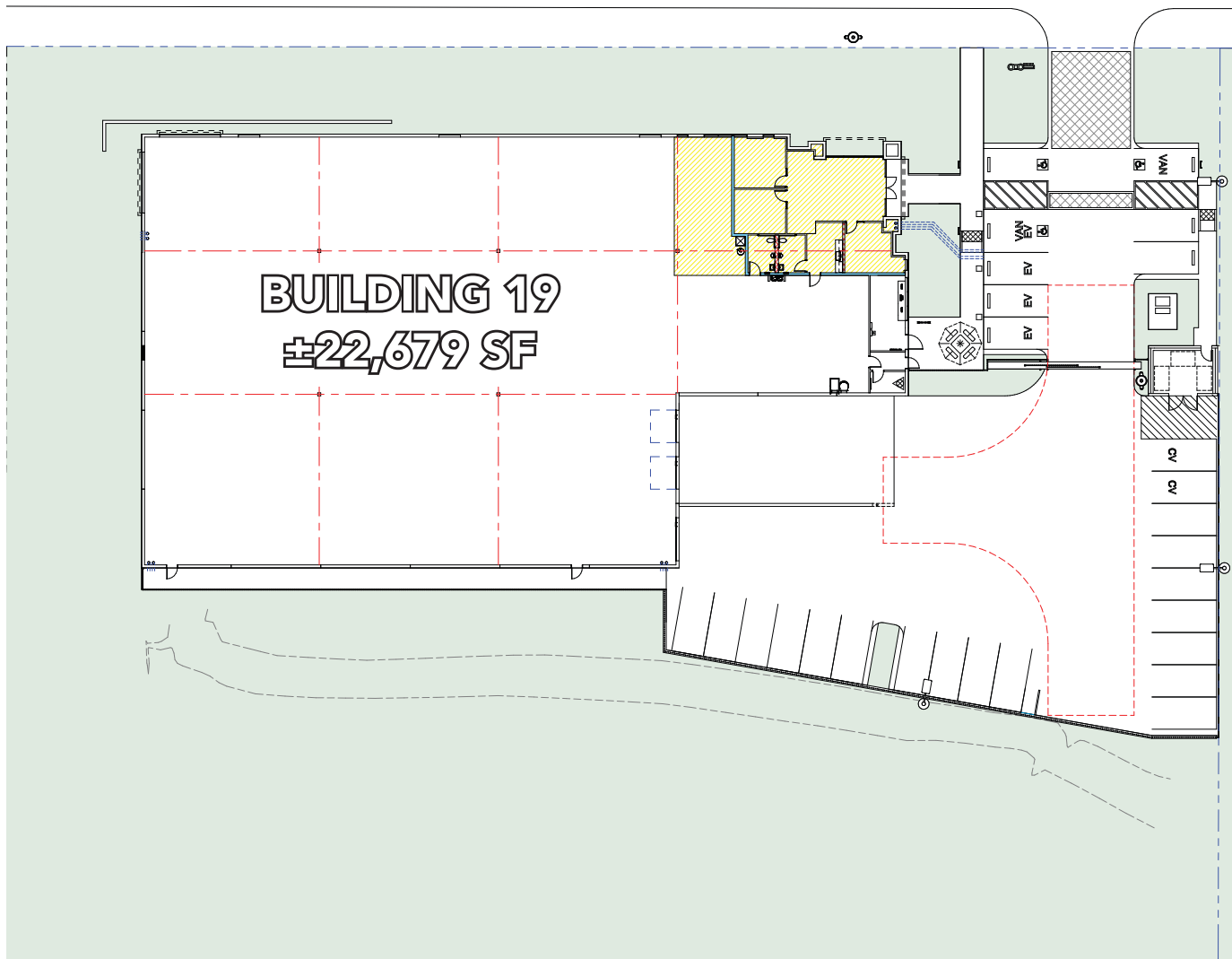
MS MOUNTAIN VIEW BUSINESS PARK

BLDG.
NINETEEN

SITE & OFFICE PLAN

4 2 6 6 1 A V E N I D A A L V A R A D O | T E M E C U L A | C A

AVENIDA ALVARADO



FOR MORE INFORMATION, CONTACT:

NOAH SAMARIN

P: 909.912.0007 | M: 714.812.1289
noah.samarin@daumcommercial.com
CADRE #01755814

NICK CANTU

P: 909.652.9054 | M: 714.787.9454
ncantu@daumcommercial.com
CADRE #02016719



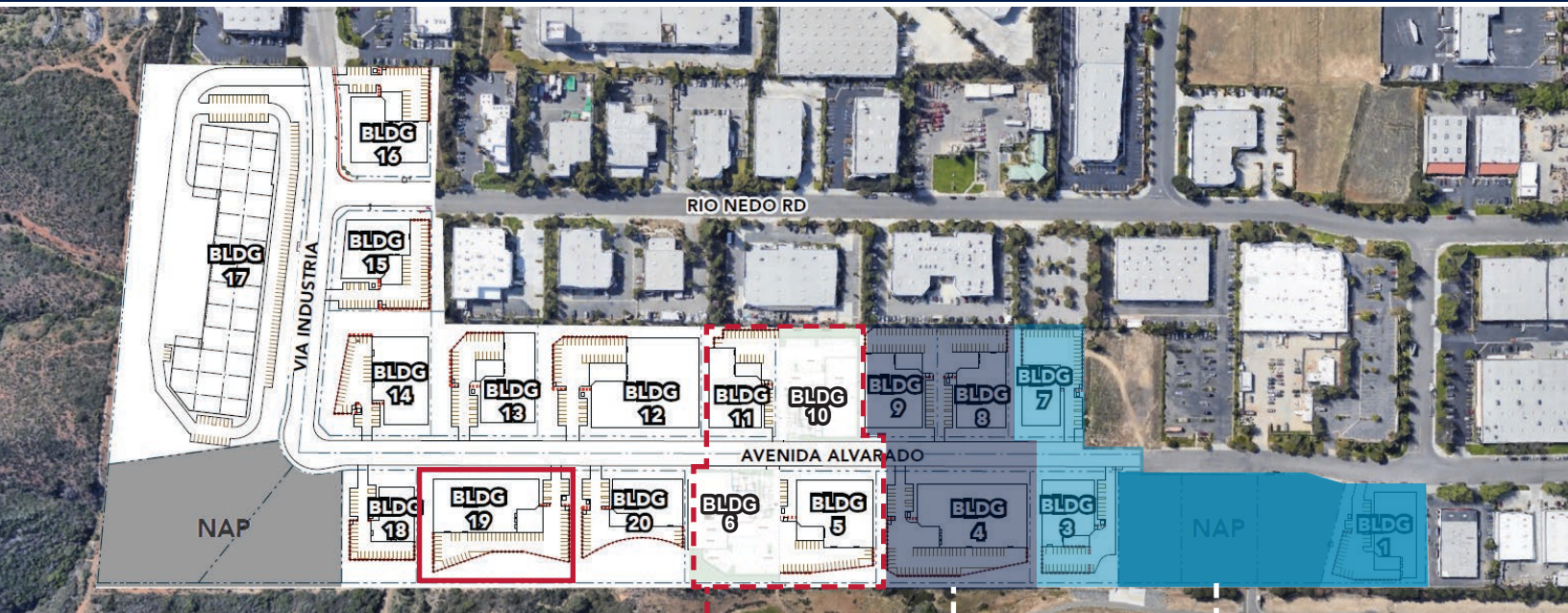
Although all information is furnished regarding for sale, rental or financing is from sources deemed reliable, such information has not been verified and no express representation is made nor is any to be implied as to the accuracy thereof, and it is submitted subject to errors, omissions, changes of price, rental or other conditions, prior sale, lease or financing, or withdrawal without notice. All Maps provided courtesy of Google Maps, Bing Maps, and Google Earth. D/AQ Corp. # 01129558

AVAILABLE FOR SALE

MS MOUNTAIN VIEW BUSINESS PARK

BLDG. NINETEEN

42661 AVENIDA ALVARADO | TEMECULA | CA

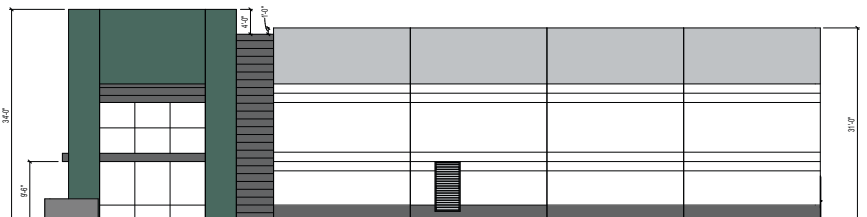


PHASE III

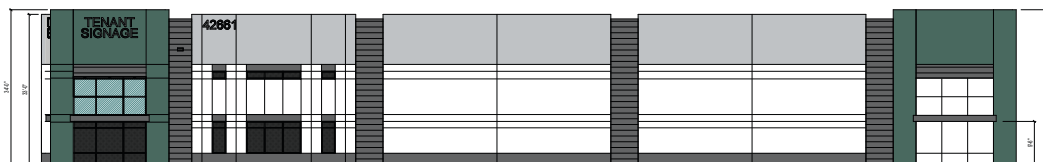
PHASE II

PHASE I

WEST ELEVATION



NORTH ELEVATION



FOR MORE INFORMATION, CONTACT:

NOAH SAMARIN

P: 909.912.0007 | M: 714.812.1289
noah.samarin@daumcommercial.com
CADRE #01755814

NICK CANTU

P: 909.652.9054 | M: 714.787.9454
ncantu@daumcommercial.com
CADRE #02016719



Although all information is furnished regarding for sale, rental or financing is from sources deemed reliable, such information has not been verified and no express representation is made nor is any to be implied as to the accuracy thereof, and it is submitted subject to errors, omissions, changes of price, rental or other conditions, prior sale, lease or financing, or withdrawal without notice. All Maps provided courtesy of Google Maps, Bing Maps, and Google Earth. D/AQ Corp. # 01129558

AVAILABLE FOR SALE

MS MOUNTAIN VIEW BUSINESS PARK

BLDG.
NINETEEN

19

4 2 6 6 1 A V E N I D A A L V A R A D O | T E M E C U L A | C A



FOR MORE INFORMATION, CONTACT:

NOAH SAMARIN

P: 909.912.0007 | M: 714.812.1289
noah.samarin@daumcommercial.com
CADRE #01755814

NICK CANTU

P: 909.652.9054 | M: 714.787.9454
ncantu@daumcommercial.com
CADRE #02016719



Although all information is furnished regarding for sale, rental or financing is from sources deemed reliable, such information has not been verified and no express representation is made nor is any to be implied as to the accuracy thereof, and it is submitted subject to errors, omissions, changes of price, rental or other conditions, prior sale, lease or financing, or withdrawal without notice. All Maps provided courtesy of Google Maps, Bing Maps, and Google Earth. D/AQ Corp. # 01129558

AVAILABLE FOR SALE

MS MOUNTAIN VIEW

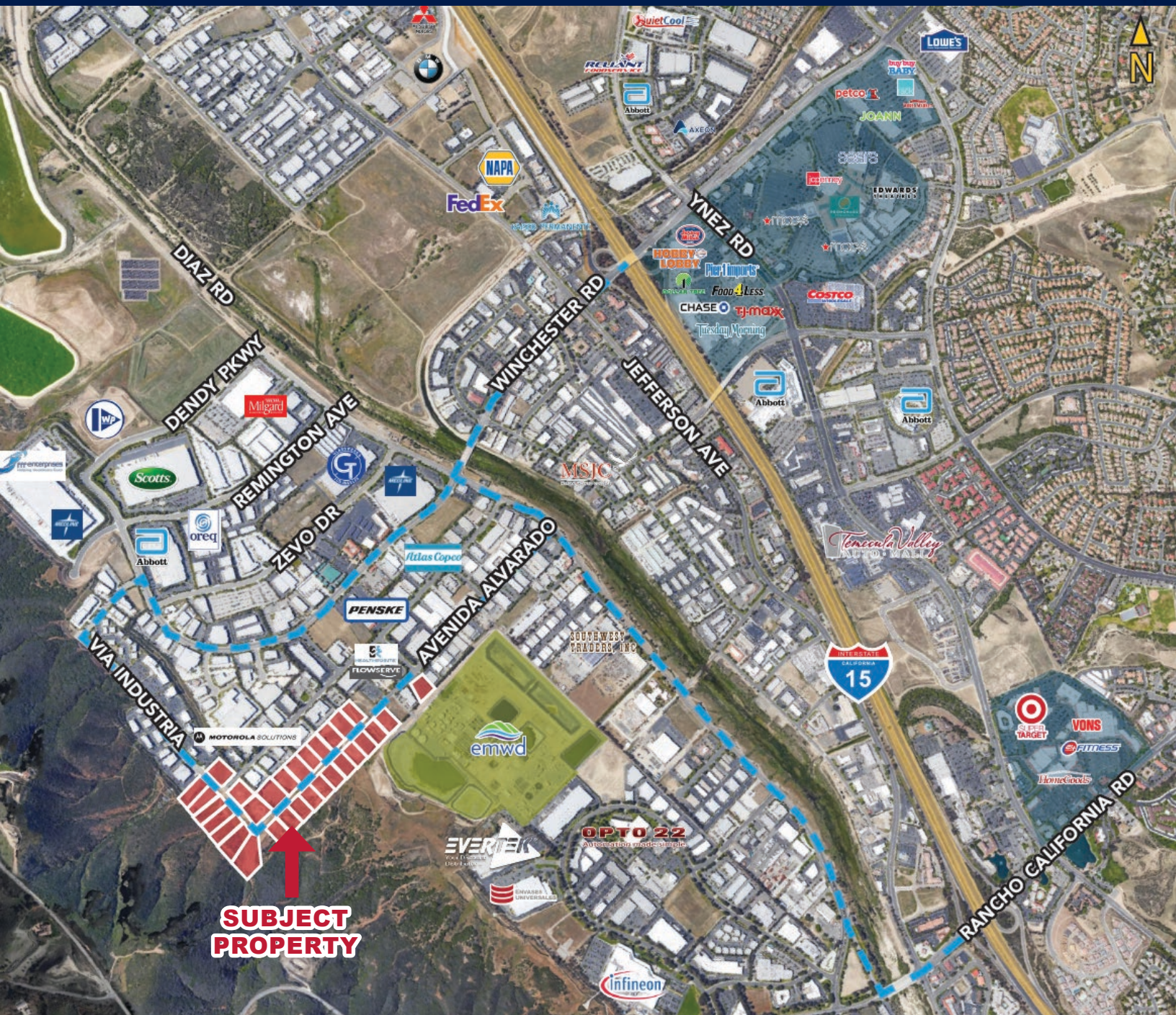
BUSINESS PARK

BLDG. NINETEEN

19

AMENITIES MAP

42661 AVENIDA ALVARADO | TEMECULA | CA



**SUBJECT
PROPERTY**

FOR MORE INFORMATION, CONTACT:

NOAH SAMARIN

P: 909.912.0007 | M: 714.812.1289
noah.samarin@daumcommercial.com
CADRE #01755814

NICK CANTU

P: 909.652.9054 | M: 714.787.9454
ncantu@daumcommercial.com
CADRE #02016719



Although all information is furnished regarding for sale, rental or financing is from sources deemed reliable, such information has not been verified and no express representation is made nor is any to be implied as to the accuracy thereof, and it is submitted subject to errors, omissions, changes of price, rental or other conditions, prior sale, lease or financing, or withdrawal without notice. All Maps provided courtesy of Google Maps, Bing Maps, and Google Earth. D/AQ Corp. # 01129558