

SALE

1.9 ACRES PRIME COMMERCIAL LAND

Charles M. Lankford Jr. Memorial Hwy, Onley, VA 23418

SALE PRICE \$250,000.00

Brian Swafford

ZREC Advisor Group

Coldwell Banker Realty

1131 S. Salisbury Blvd Ste B

Salisbury, MD 21801

brian.swafford@cbrealty.com

Lic. #0225258063



COLDWELL BANKER
REALTY



Affiliated real estate agents are independent contractor sales associates, not employees. The property information herein is derived from various sources that may include, but not be limited to, county records and the Multiple Listing Service, and it may include approximations. Although the information is believed to be accurate, it is not warranted and you should not rely upon it without personal verification. ©2022 Coldwell Banker. All Rights Reserved. Coldwell Banker and the Coldwell Banker logos are trademarks of Coldwell Banker Real Estate LLC. The Coldwell Banker® System is comprised of company owned offices which are owned by a subsidiary of Anywhere Advisors LLC and franchised offices which are independently owned and operated. The Coldwell Banker System fully supports the principles of the Fair Housing Act and the Equal Opportunity Act.



SALE

1.9 ACRES PRIME COMMERCIAL LAND

Charles M. Lankford Jr. Memorial Hwy, Onley, VA 23418



PROPERTY DESCRIPTION

1.9 Acres of undeveloped commercial land in the heart of Accomack County, Virginia. This property is located approximately 100 yards from a signalized intersection and has average daily traffic counts over 22,000. With 300 feet of frontage on busy Lankford Hwy (US Rt.13) , this property is positioned to provide maximum exposure to traffic for your business.

PROPERTY HIGHLIGHTS

- Over 300 ft of highway frontage along busy US Rt.13
- Deeded access via CVS providing direct Rt.13 Ingress / Egress

OFFERING SUMMARY

Sale Price	\$250,000.00
Number of Parcels	1
Lot Size	1.9 AC



COLDWELL BANKER
REALTY

Brian Swafford
443.614.8983



SALE

1.9 ACRES PRIME COMMERCIAL LAND
Charles M. Lankford Jr. Memorial Hwy, Onley, VA 23418



Brian Swafford
443.614.8983

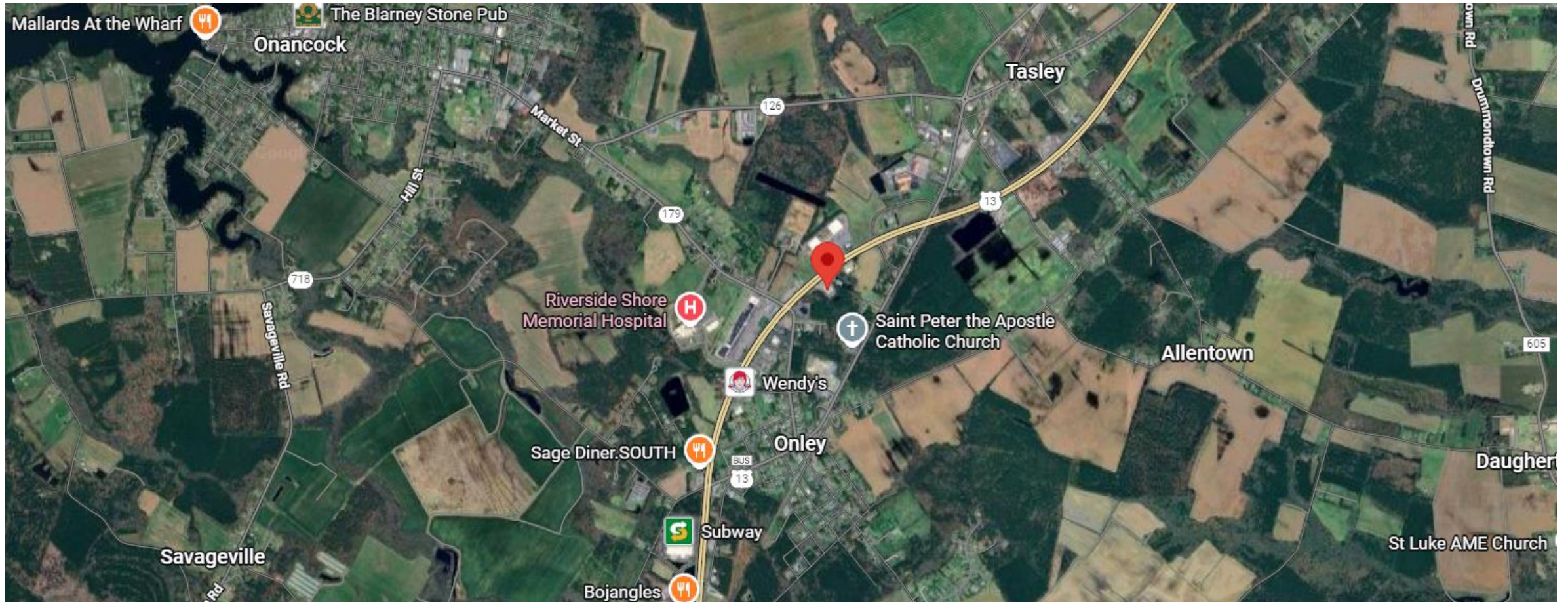


COLDWELL BANKER
REALTY

SALE

1.9 ACRES PRIME COMMERCIAL LAND

Charles M. Lankford Jr. Memorial Hwy, Onley, VA 23418



Brian Swafford
443.614.8983



COLDWELL BANKER
REALTY