

**27651 HILDEBRANDT, ROMULUS, MI 48174**

**228,067 SF**



**LOCATION  
DETAILS**

- 302,832 SF Total Building Size
- Adjacent to Detroit Metro Airport
- Immediate Access to Major Freeways

**PROPERTY  
HIGHLIGHTS**

- 228,067 SF Available
- Cross-Dock Loading
- 30' - 32' Ceiling Heights
- 40 (9' X 10') Dock Doors, More Possible
- 6 (12' X 14') Drive-In Doors
- ESFR Sprinkler System
- Plentiful On-Site Trailer Staging



**LEASING**

Dan Labes  
248-357-6578  
dan.labes@nrmk.com

**27651 HILDEBRANDT, ROMULUS, MI 48174**

**228,067 SF**



PROPERTY  
**DETAILS**

<b>Total Building Area</b>	302,832 SF	<b>Parcel ID</b>	80-052-99-0026-702
<b>Min/Max Available</b>	228,067 SF	<b>Parking Description</b>	257 cars
<b>Office Area</b>	16,626 SF	<b>Rail Serverd</b>	No
<b>Property Type</b>	Warehouse/Distribution	<b>Cranes</b>	No
<b>Tenancy</b>	Multi-tenant	<b>Heat</b>	Air Rotation
<b>Year Built</b>	2006	<b>Clear Height Min/Max</b>	32.0'
<b>Year Renovated</b>	2022	<b>Grade/Dock Doors</b>	6 / 40, more possible
<b>Zoning</b>	MT-2	<b>Sprinkler</b>	Yes, ESFR
<b>Site/Parcel Area</b>	20.50 acres	<b>Power</b>	1,000 amps, 480 volts

**27651 HILDEBRANDT, ROMULUS, MI 48174**

**228,067 SF**

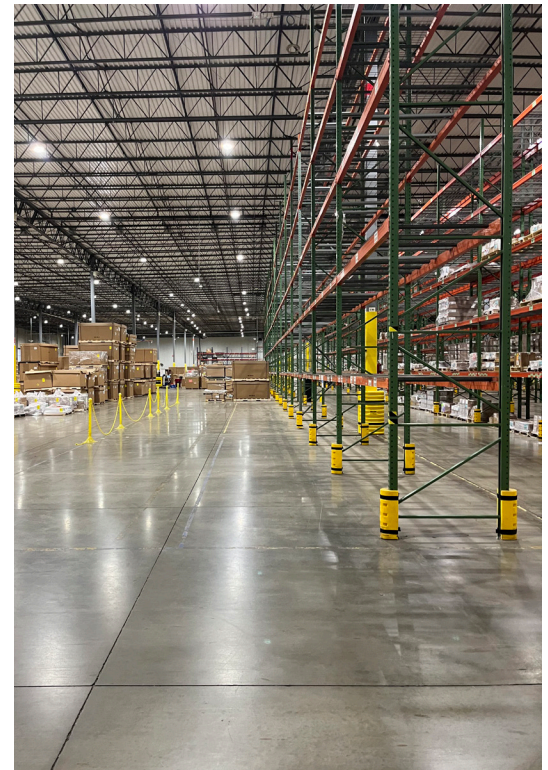
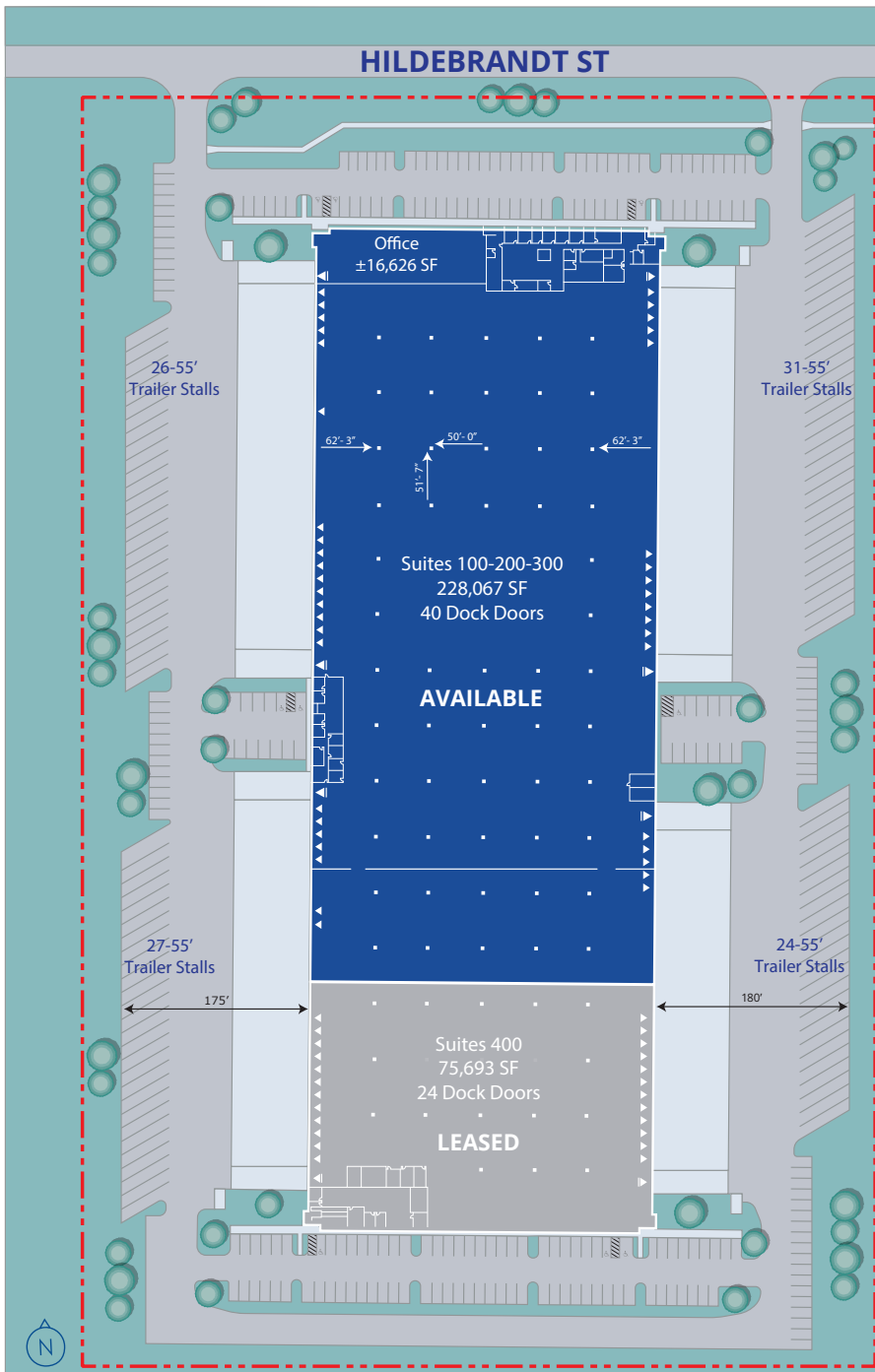
**AERIAL MAP**



**27651 HILDEBRANDT, ROMULUS, MI 48174**

**228,067 SF**

**FLOOR PLAN**



- ▲ DOCK DOORS
- ▲ DRIVE IN DOORS

**LEASING**

Dan Labes  
248-357-6578  
dan.labes@nrmk.com