

1,049 - 4,657 SF OFFICE/MEDICAL



FOR LEASE



44344 Dequindre Road

Sterling Heights, Michigan 48314

Property Highlights

- Beautiful Turn-Key Medical Suites from 1,049-4,657 SF
- Connected to Troy Beaumont Hospital
- Pharmacy, Lab, Restaurant and Many Specialties are part of this Full Service Medical Campus
- Covered Drop-Off
- Located Off M-59 and Dequindre
- New Ownership
- Tenant Improvement Packages

OFFERING SUMMARY

Lease Rate:	Contact Listing Agent(s)
Available SF:	1,049 - 4,657 SF
Building Size:	100,490 SF

SPACES

SPACES	SPACE SIZE
Suite 210	2,796 SF
Suite 220	1,535 SF
Suite 240	1,049 SF
Suite 340	2,826 SF
Suite 410	3,993 SF
Suite 460	3,149 SF
Suite 480	2,759 SF
Suite 520	1,449 SF
Suite 590	4,657 SF

NAI Farbman

Commercial Real Estate Services, Worldwide.

www.naifarbman.com

Jeff Cavazos

Senior Vice President | 248.613.6457
jcavazos@farbman.com

Kristi Lawton

Vice President | 248.798.9828
lawton@farbman.com

John Harwood

Vice President | 734.755.0488
harwood@farbman.com

Healthpeak®

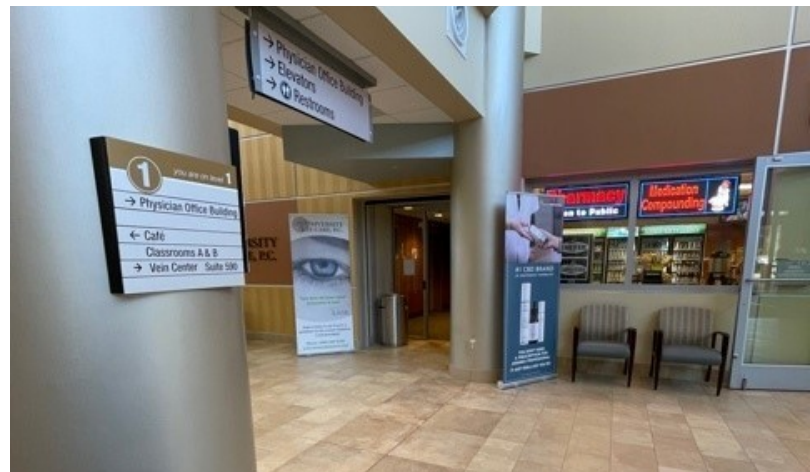
DOC
LISTED
NYSE

NO WARRANTY, EXPRESS OR IMPLIED, IS MADE AS TO THE ACCURACY OF THE INFORMATION CONTAINED HEREIN. THIS INFORMATION IS SUBMITTED SUBJECT TO ERRORS, OMISSIONS, CHANGE OF PRICE, RENTAL OR OTHER CONDITIONS, WITHDRAWAL WITHOUT NOTICE, AND IS SUBJECT TO ANY SPECIAL LISTING CONDITIONS IMPOSED BY OUR PRINCIPALS. COOPERATING BROKERS, BUYERS, TENANTS AND OTHER PARTIES WHO RECEIVE THIS DOCUMENT SHOULD NOT RELY ON IT, BUT SHOULD USE IT AS A STARTING POINT OF ANALYSIS, AND SHOULD INDEPENDENTLY CONFIRM THE ACCURACY OF THE INFORMATION CONTAINED HEREIN THROUGH A DUE DILIGENCE REVIEW OF THE BOOKS, RECORDS, FILES AND DOCUMENTS THAT CONSTITUTE RELIABLE SOURCES OF THE INFORMATION DESCRIBED HEREIN. LOGOS ARE FOR IDENTIFICATION PURPOSES ONLY AND MAY BE TRADEMARKS OF THEIR RESPECTIVE COMPANIES. NAI Farbman, INC. CA BRE LIC. #01990696.

1,049 - 4,657 SF OFFICE/MEDICAL



FOR LEASE



1,049 - 4,657 SF OFFICE/MEDICAL



FOR LEASE



Beaumont

Professional
Office Building

Subject Property

Rd

Dequindre Rd

Dequindre Rd

Dequindre Rd

Map data © 2021 Imagery © 2021, Maxar Technologies, U.S. Geological Survey, USDA Farm Service Agency



Commercial Real Estate Services, Worldwide.
www.naifarbman.com

Jeff Cavazos
Senior Vice President | 248.613.6457
jcavazos@farbman.com

Kristi Lawton
Vice President | 248.798.9828
lawton@farbman.com

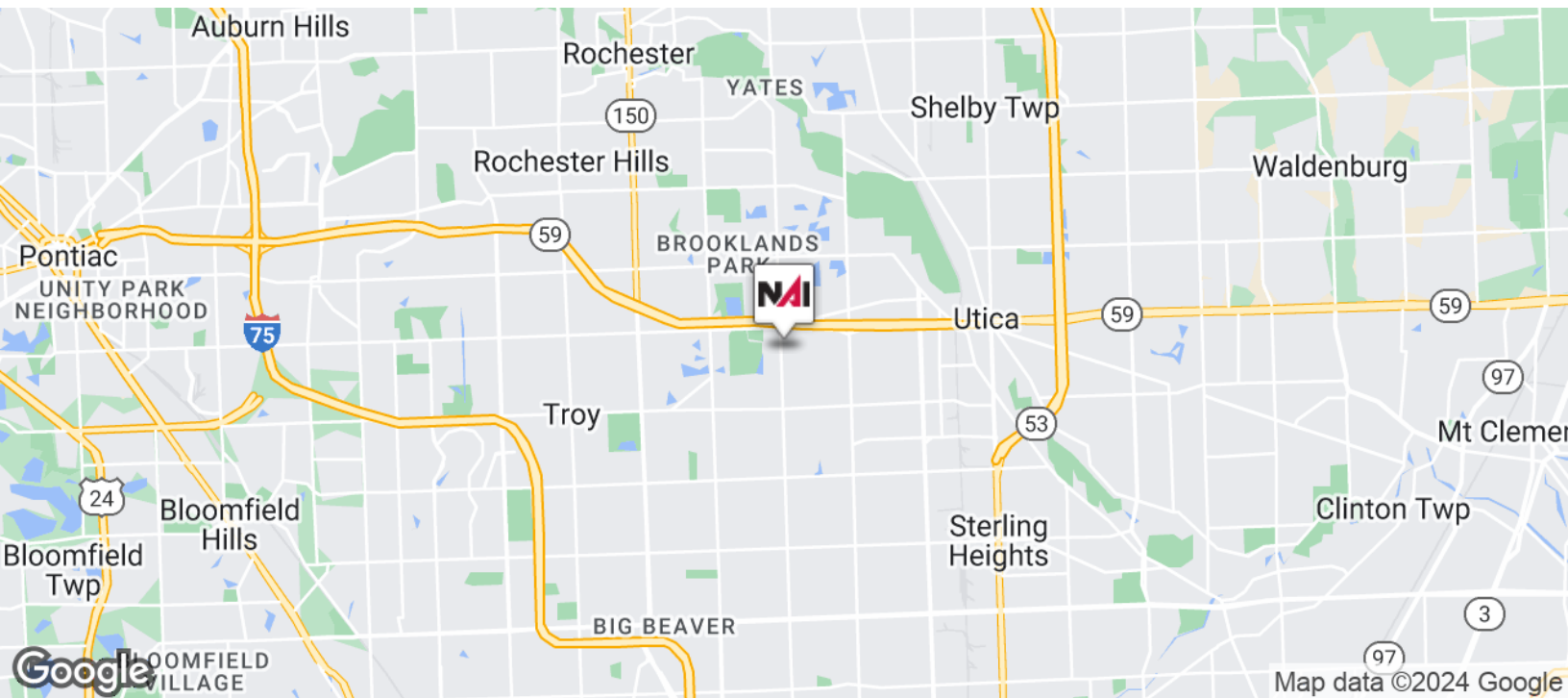
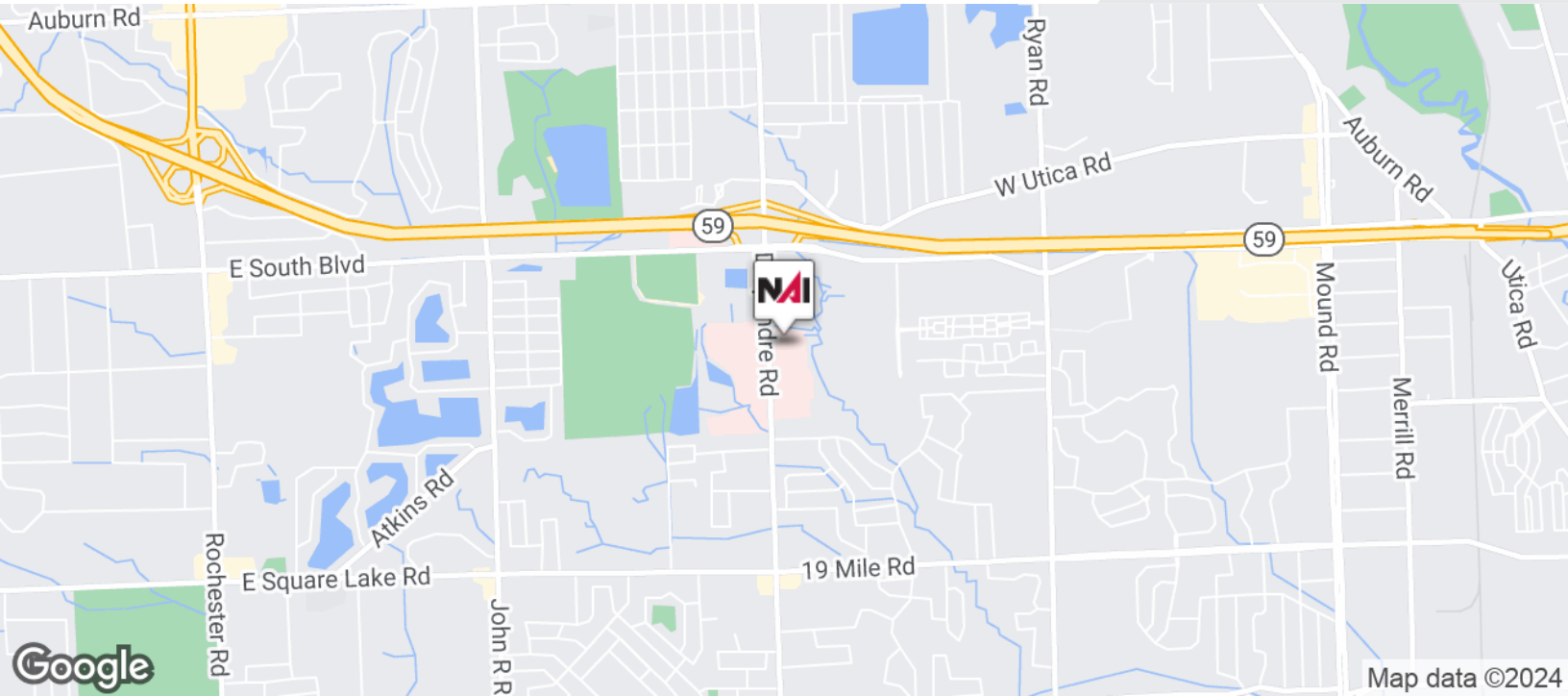
John Harwood
Vice President | 734.755.0488
harwood@farbman.com

NO WARRANTY, EXPRESS OR IMPLIED, IS MADE AS TO THE ACCURACY OF THE INFORMATION CONTAINED HEREIN. THIS INFORMATION IS SUBMITTED SUBJECT TO ERRORS, OMISSIONS, CHANGE OF PRICE, RENTAL OR OTHER CONDITIONS, WITHDRAWAL WITHOUT NOTICE, AND IS SUBJECT TO ANY SPECIAL LISTING CONDITIONS IMPOSED BY OUR PRINCIPALS. COOPERATING BROKERS, BUYERS, TENANTS AND OTHER PARTIES WHO RECEIVE THIS DOCUMENT SHOULD NOT RELY ON IT, BUT SHOULD USE IT AS A STARTING POINT OF ANALYSIS, AND SHOULD INDEPENDENTLY CONFIRM THE ACCURACY OF THE INFORMATION CONTAINED HEREIN THROUGH A DUE DILIGENCE REVIEW OF THE BOOKS, RECORDS, FILES AND DOCUMENTS THAT CONSTITUTE RELIABLE SOURCES OF THE INFORMATION DESCRIBED HEREIN. LOGOS ARE FOR IDENTIFICATION PURPOSES ONLY AND MAY BE TRADEMARKS OF THEIR RESPECTIVE COMPANIES. NAI Farbman, INC. CA BRE LIC. #01990696.

1,049 - 4,657 SF OFFICE/MEDICAL



FOR LEASE



Commercial Real Estate Services, Worldwide.

www.naifarbman.com

Jeff Cavazos

Senior Vice President | 248.613.6457
jcavazos@farbman.com

Kristi Lawton

Vice President | 248.798.9828
lawton@farbman.com

John Harwood

Vice President | 734.755.0488
harwood@farbman.com

NO WARRANTY, EXPRESS OR IMPLIED, IS MADE AS TO THE ACCURACY OF THE INFORMATION CONTAINED HEREIN. THIS INFORMATION IS SUBMITTED SUBJECT TO ERRORS, OMISSIONS, CHANGE OF PRICE, RENTAL OR OTHER CONDITIONS, WITHDRAWAL WITHOUT NOTICE, AND IS SUBJECT TO ANY SPECIAL LISTING CONDITIONS IMPOSED BY OUR PRINCIPALS. COOPERATING BROKERS, BUYERS, TENANTS AND OTHER PARTIES WHO RECEIVE THIS DOCUMENT SHOULD NOT RELY ON IT, BUT SHOULD USE IT AS A STARTING POINT OF ANALYSIS, AND SHOULD INDEPENDENTLY CONFIRM THE ACCURACY OF THE INFORMATION CONTAINED HEREIN THROUGH A DUE DILIGENCE REVIEW OF THE BOOKS, RECORDS, FILES AND DOCUMENTS THAT CONSTITUTE RELIABLE SOURCES OF THE INFORMATION DESCRIBED HEREIN. LOGOS ARE FOR IDENTIFICATION PURPOSES ONLY AND MAY BE TRADEMARKS OF THEIR RESPECTIVE COMPANIES. NAI Farbman, INC. CA BRE LIC. #01990696.

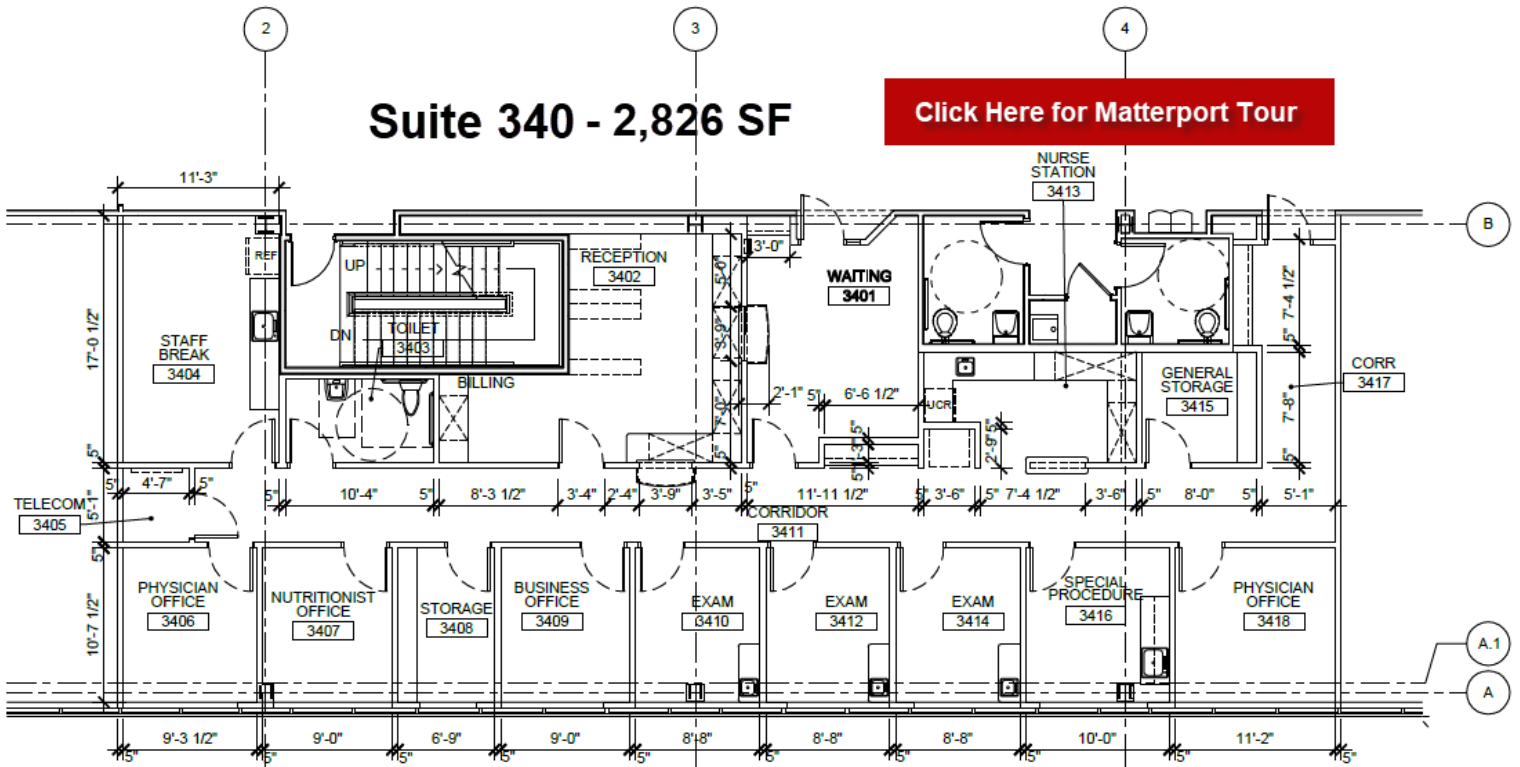
1,049 - 4,657 SF OFFICE/MEDICAL



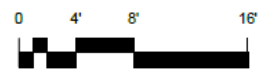
FOR LEASE

Suite 340 - 2,826 SF

[Click Here for Matterport Tour](#)



1 PARTIAL THIRD FLOOR PLAN - DIMENSION
SCALE: 1/8" = 1'-0"

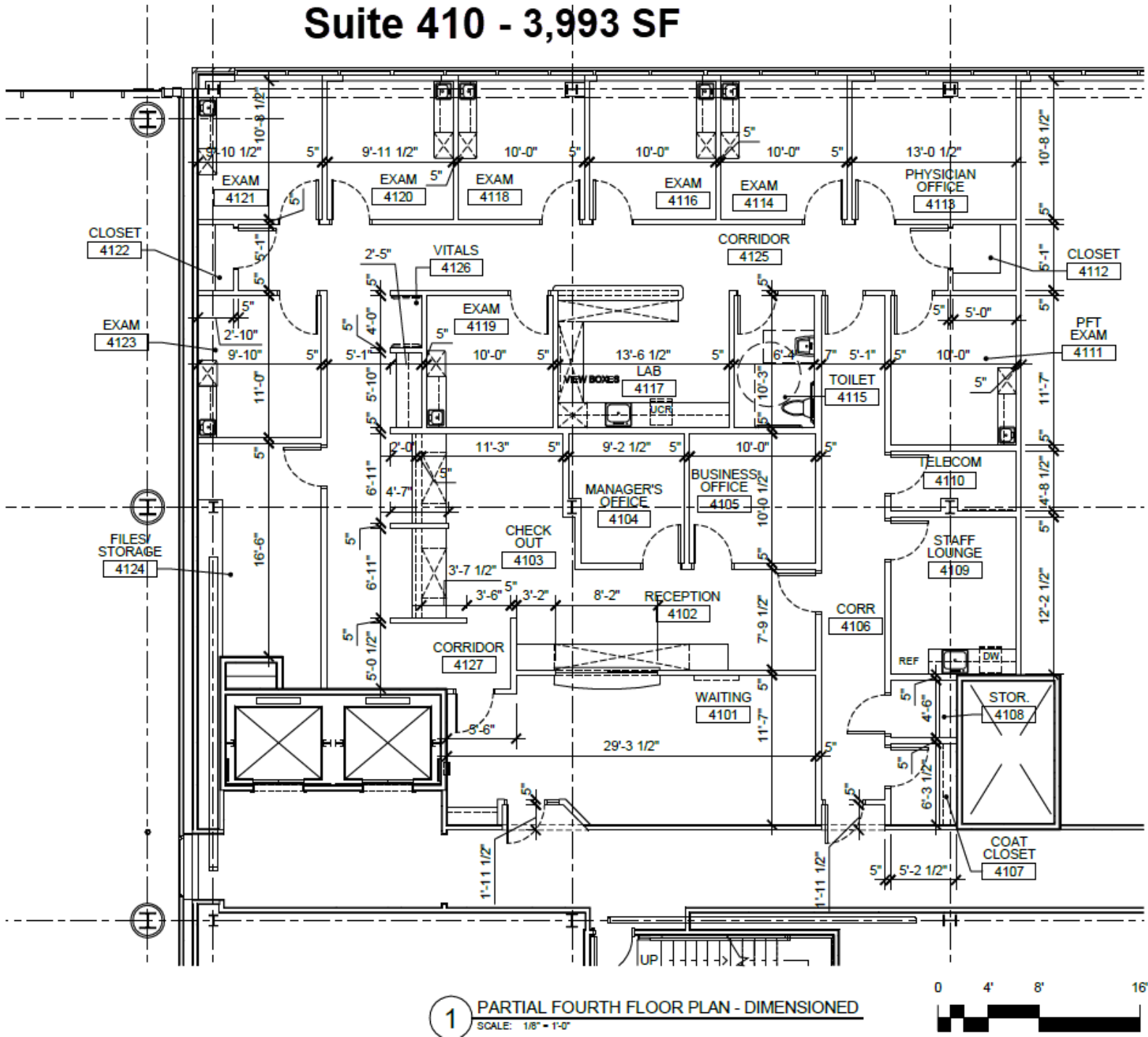


1,049 - 4,657 SF OFFICE/MEDICAL



FOR LEASE

Suite 410 - 3,993 SF



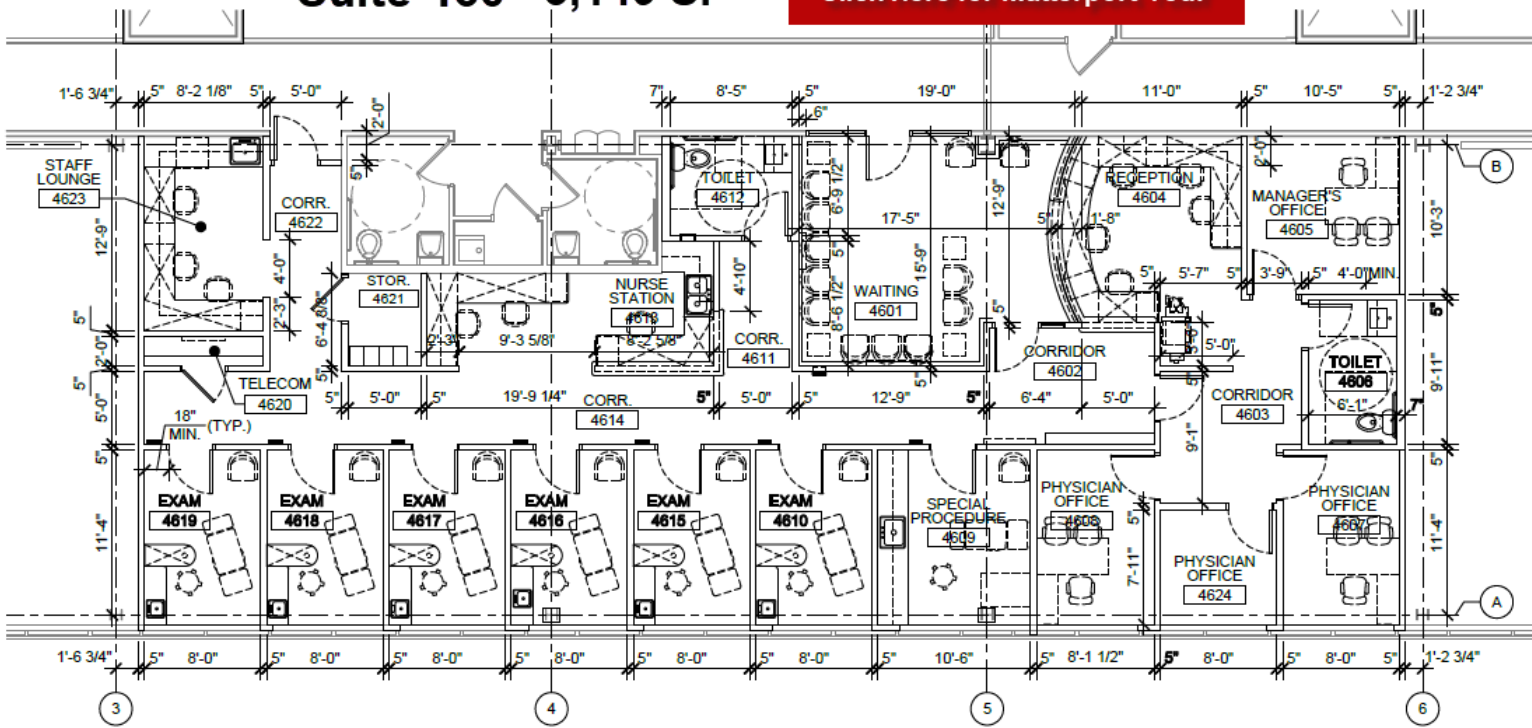
1,049 - 4,657 SF OFFICE/MEDICAL



FOR LEASE

Suite 460 - 3,149 SF

[Click Here for Matterport Tour](#)



1 PARTIAL FOURTH FLOOR PLAN - DIMENSIONED
SCALE: 1/8" = 1'-0"



Commercial Real Estate Services, Worldwide.

www.naifarbman.com

Jeff Cavazos
Senior Vice President | 248.613.6457
jcavazos@farbman.com

Kristi Lawton
Vice President | 248.798.9828
lawton@farbman.com

John Harwood
Vice President | 734.755.0488
harwood@farbman.com

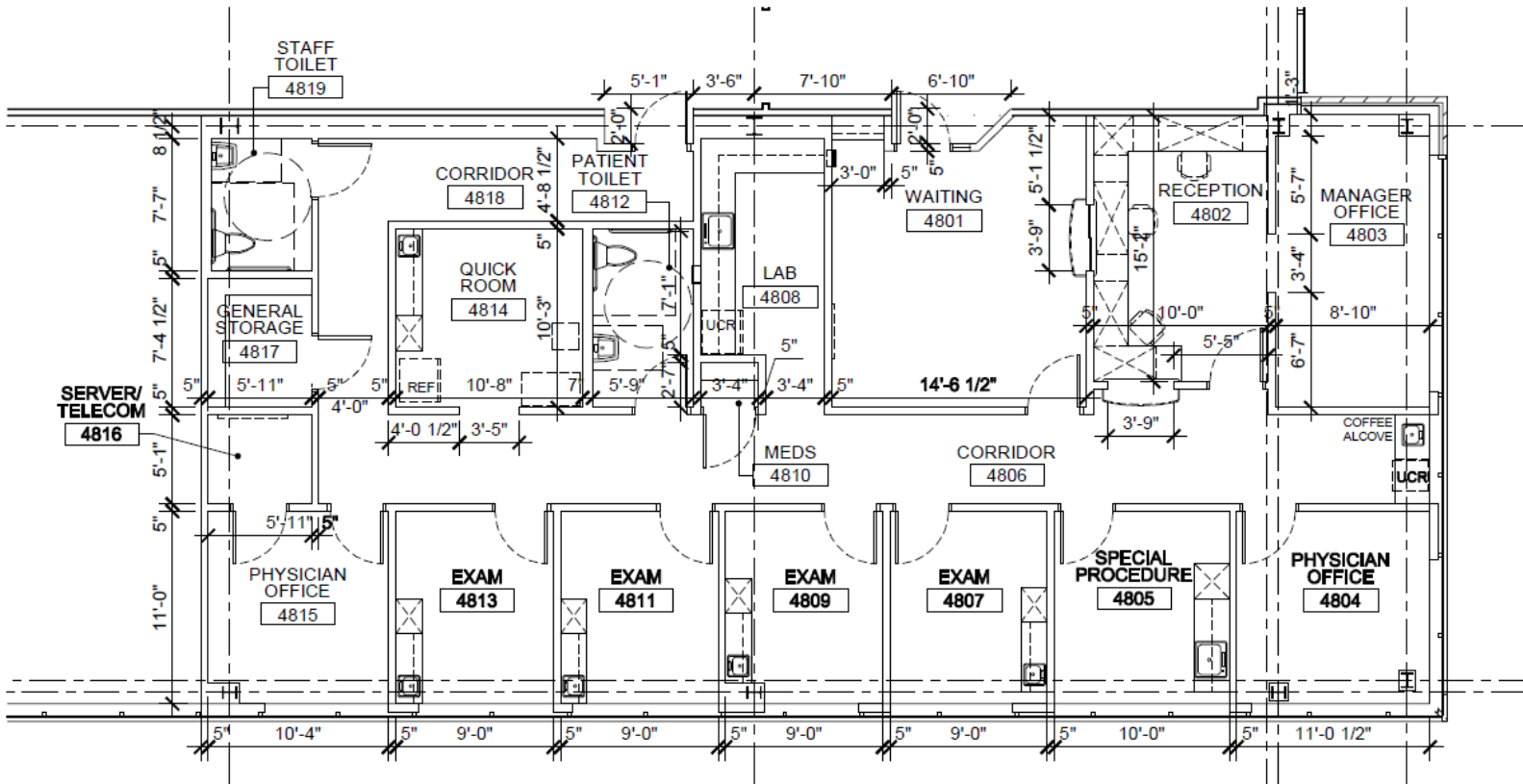
NO WARRANTY, EXPRESS OR IMPLIED, IS MADE AS TO THE ACCURACY OF THE INFORMATION CONTAINED HEREIN. THIS INFORMATION IS SUBMITTED SUBJECT TO ERRORS, OMISSIONS, CHANGE OF PRICE, RENTAL OR OTHER CONDITIONS, WITHDRAWAL WITHOUT NOTICE, AND IS SUBJECT TO ANY SPECIAL LISTING CONDITIONS IMPOSED BY OUR PRINCIPALS. COOPERATING BROKERS, BUYERS, TENANTS AND OTHER PARTIES WHO RECEIVE THIS DOCUMENT SHOULD NOT RELY ON IT, BUT SHOULD USE IT AS A STARTING POINT OF ANALYSIS, AND SHOULD INDEPENDENTLY CONFIRM THE ACCURACY OF THE INFORMATION CONTAINED HEREIN THROUGH A DUE DILIGENCE REVIEW OF THE BOOKS, RECORDS, FILES AND DOCUMENTS THAT CONSTITUTE RELIABLE SOURCES OF THE INFORMATION DESCRIBED HEREIN. LOGOS ARE FOR IDENTIFICATION PURPOSES ONLY AND MAY BE TRADEMARKS OF THEIR RESPECTIVE COMPANIES. NAI Farbman, INC. CA BRE LIC. #01990696.

1,049 - 4,657 SF OFFICE/MEDICAL



FOR LEASE

Suite 480 - 2,759 SF



1 PARTIAL FOURTH FLOOR PLAN - DIMENSIONED
SCALE: 1/8" = 1'-0"



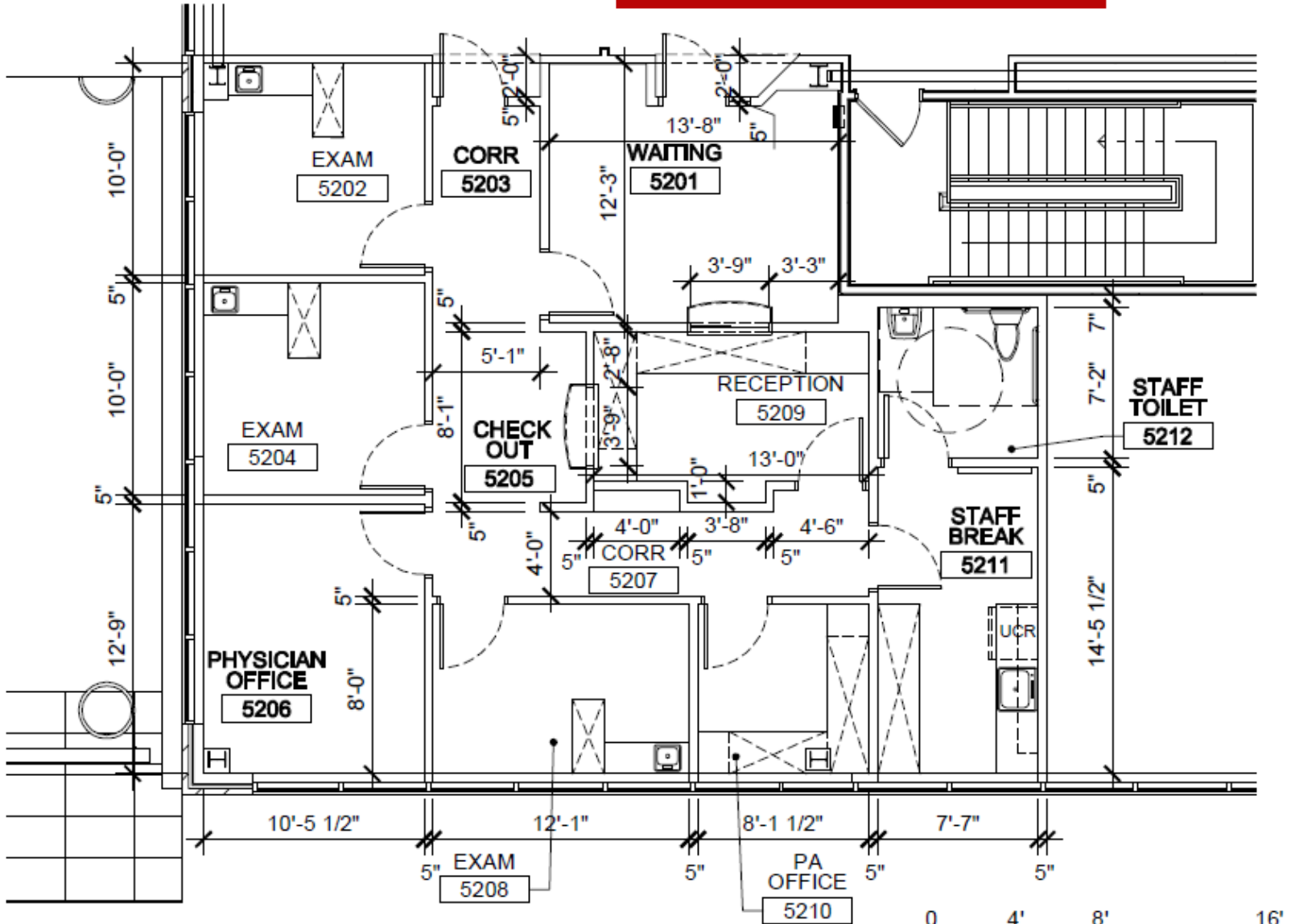
1,049 - 4,657 SF OFFICE/MEDICAL



FOR LEASE

Suite 520 -1,449 SF

[Click Here for Matterport Tour](#)



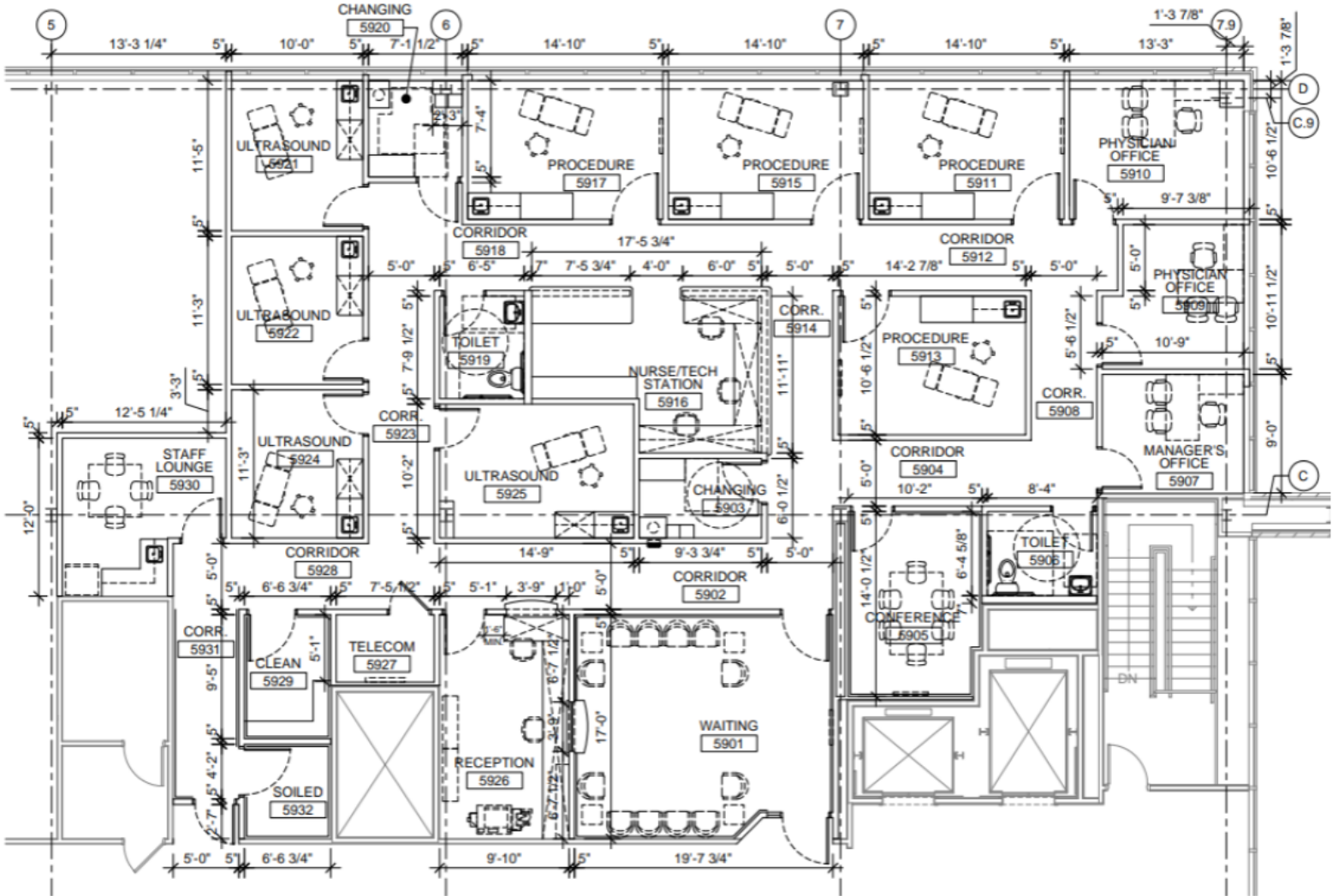
1 PARTIAL FIFTH FLOOR PLAN - DIMENSIONED
SCALE: 1/8" = 1'-0"

1,049 - 4,657 SF OFFICE/MEDICAL



FOR LEASE

Suite 590 - 4,657 SF



Commercial Real Estate Services, Worldwide.
www.naifarberman.com

Jeff Cavazos
Senior Vice President | 248.613.6457
jcavazos@farberman.com

Kristi Lawton
Vice President | 248.798.9828
lawton@farberman.com

John Harwood
Vice President | 734.755.0488
harwood@farberman.com

Healthpeak [®] | **DOC LISTED NYSE**

NO WARRANTY, EXPRESS OR IMPLIED, IS MADE AS TO THE ACCURACY OF THE INFORMATION CONTAINED HEREIN. THIS INFORMATION IS SUBMITTED SUBJECT TO ERRORS, OMISSIONS, CHANGE OF PRICE, RENTAL OR OTHER CONDITIONS, WITHDRAWAL WITHOUT NOTICE, AND IS SUBJECT TO ANY SPECIAL LISTING CONDITIONS IMPOSED BY OUR PRINCIPALS, COOPERATING BROKERS, BUYERS, TENANTS AND OTHER PARTIES WHO RECEIVE THIS DOCUMENT SHOULD NOT RELY ON IT, BUT SHOULD USE IT AS A STARTING POINT OF ANALYSIS, AND SHOULD INDEPENDENTLY CONFIRM THE ACCURACY OF THE INFORMATION CONTAINED HEREIN THROUGH A DUE DILIGENCE REVIEW OF THE BOOKS, RECORDS, FILES AND DOCUMENTS THAT CONSTITUTE RELIABLE SOURCES OF THE INFORMATION DESCRIBED HEREIN. LOGOS ARE FOR IDENTIFICATION PURPOSES ONLY AND MAY BE TRADEMARKS OF THEIR RESPECTIVE COMPANIES. NAI Farberman, INC. CA BRE LIC. #01990896.