

CORNER CENTER



VERTIGO
PARIS

PARIS BAGUETTE

PARIS BAGUETTE

Los Angeles

ONE WAY



Property Information

RENT: \$2.25/MG

**AVAILABILITY: 2nd Floor 3,500 - 8,000 SF
3rd Floor 3,500 - 8,000 SF**

TERM: 2-5 Years

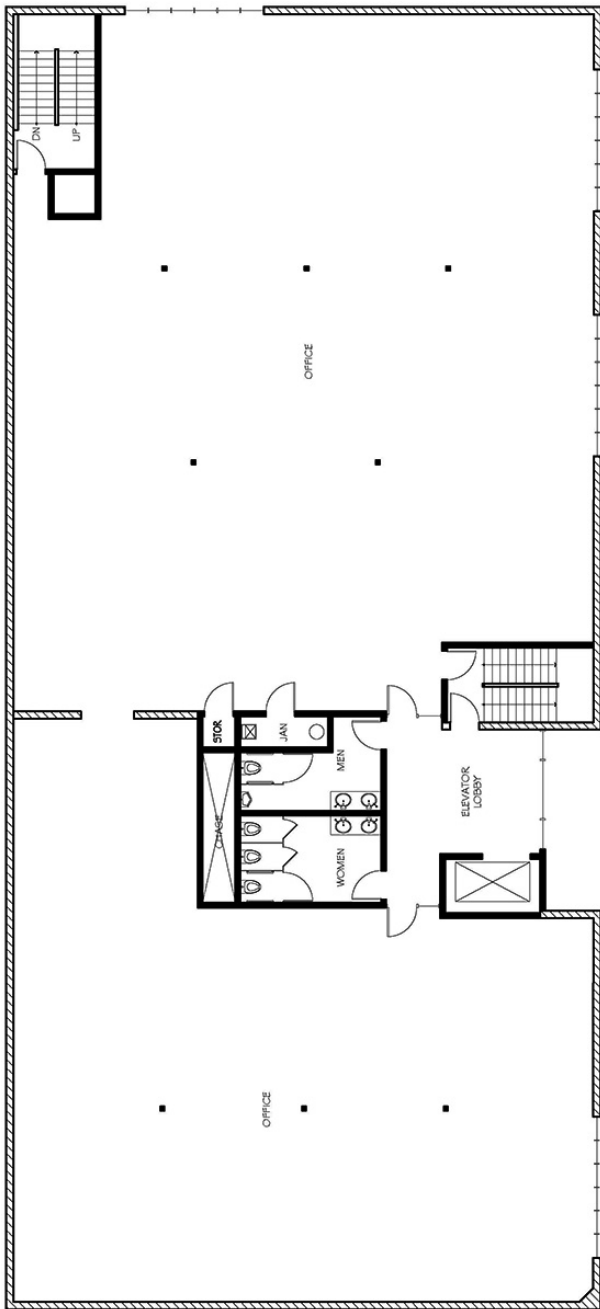
**PARKING: As available / 3 Monthly Lots
within One Block Radius**

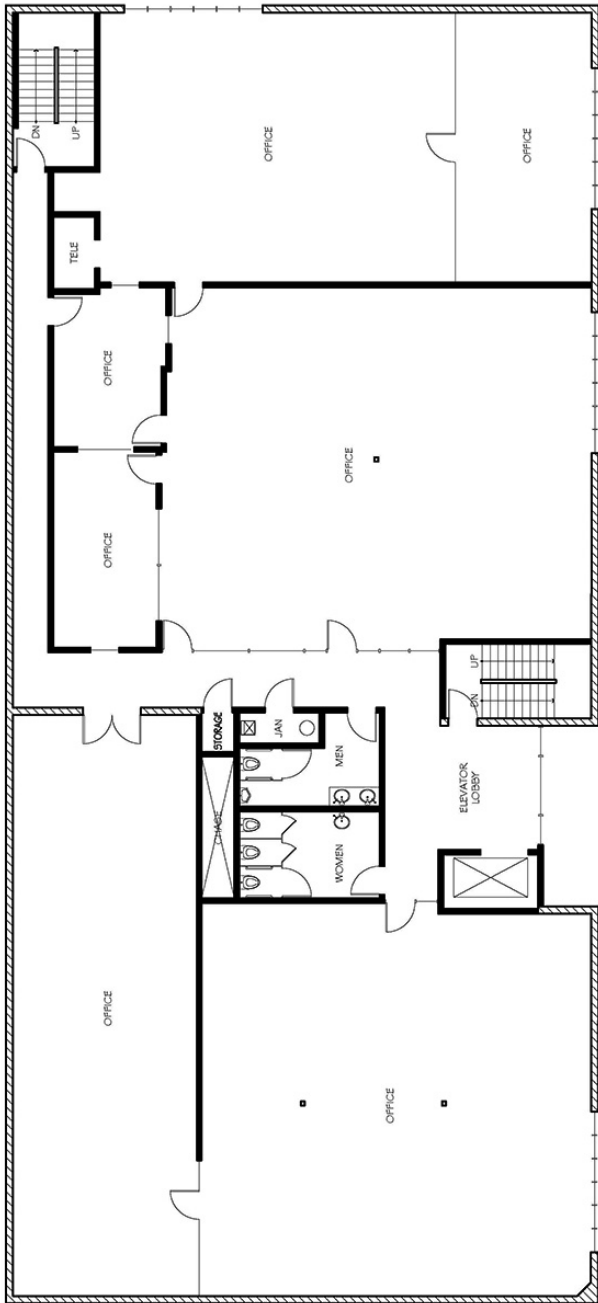
NUMBER OF STORIES: 3

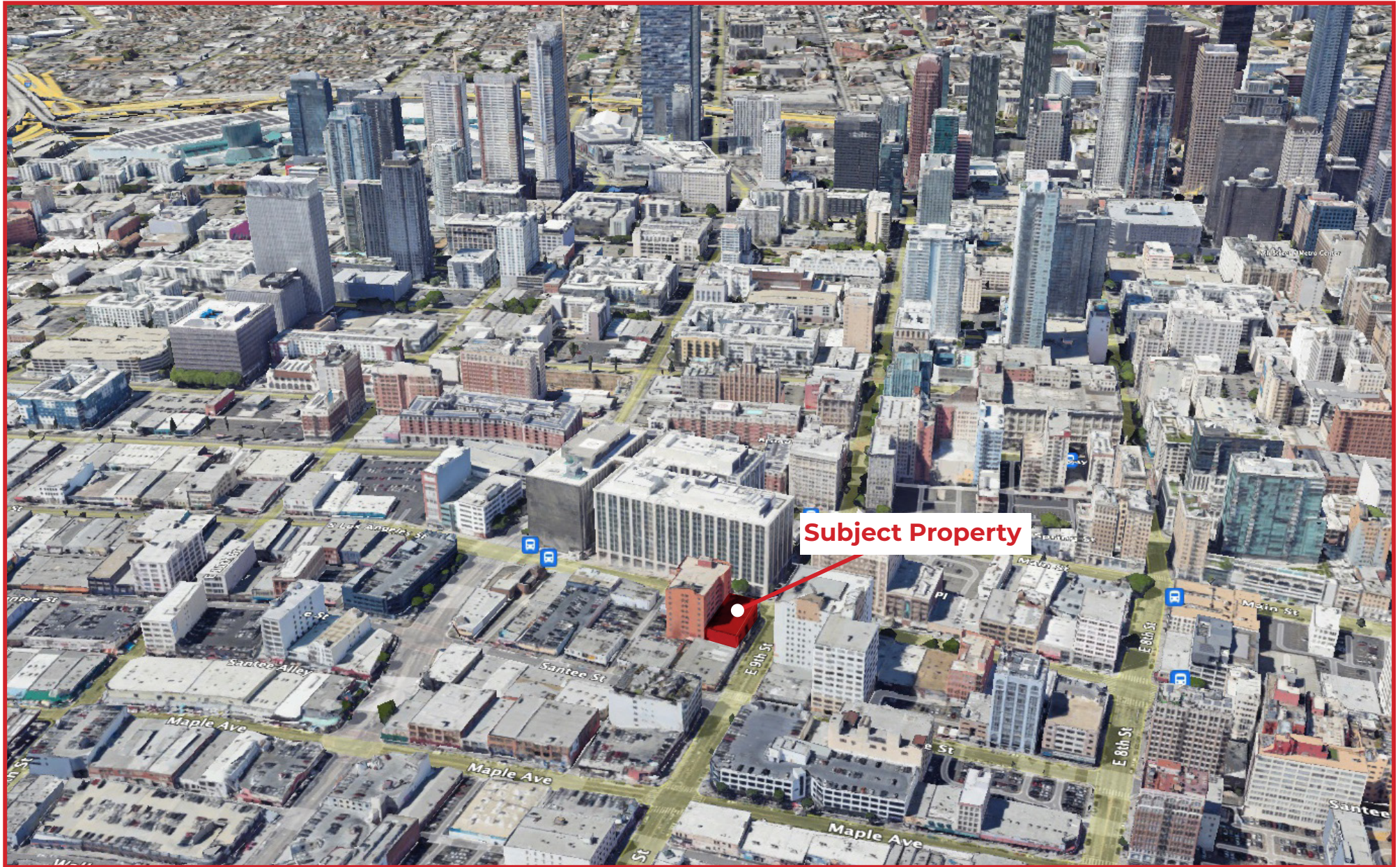
No warranty or representation is made to the accuracy of the foregoing information.
Terms of sale or lease are subject to change or withdrawal without notice.

**200 E 9th St.,
Los Angeles, CA 90015**









Amenities Map



CORNER CENTER

CORNER CENTER



**FOR MORE INFORMATION,
PLEASE CONTACT:**

Aleks Trifunovic, SIOR

President

310.899.2721

atrifunovic@leewestla.com

BKR DRE 01363109

Serge Sarkissian

Vice President

310.899.2739

ssarkissian@leewestla.com

AGT DRE 01929449

Tommy Isola

Principal

310.899.2709

tisola@leewestla.com

AGT DRE 01974024

Adam Levine

Associate

310.899.2703

alevine@leewestla.com

AGT DRE 02104830



**LEE &
ASSOCIATES**
COMMERCIAL REAL ESTATE SERVICES

Lee & Associates Los Angeles West, Inc.
1508 17th Street, Santa Monica, CA
310.899.2700 | www.leewestla.com | DRE 01222000
No warranty or representation is made to the accuracy of the foregoing information.