



For Lease / Sale

**Talor Okada**  
Executive Vice President  
+1 425 453 3127  
talor.okada@colliers.com

**Rich Sander**  
Associate Vice President  
+1 360 981 2543  
rich.sander@colliers.com

**Colliers International WA**  
11225 SE 6th St, Suite 240  
Bellevue, WA 98004  
colliers.com

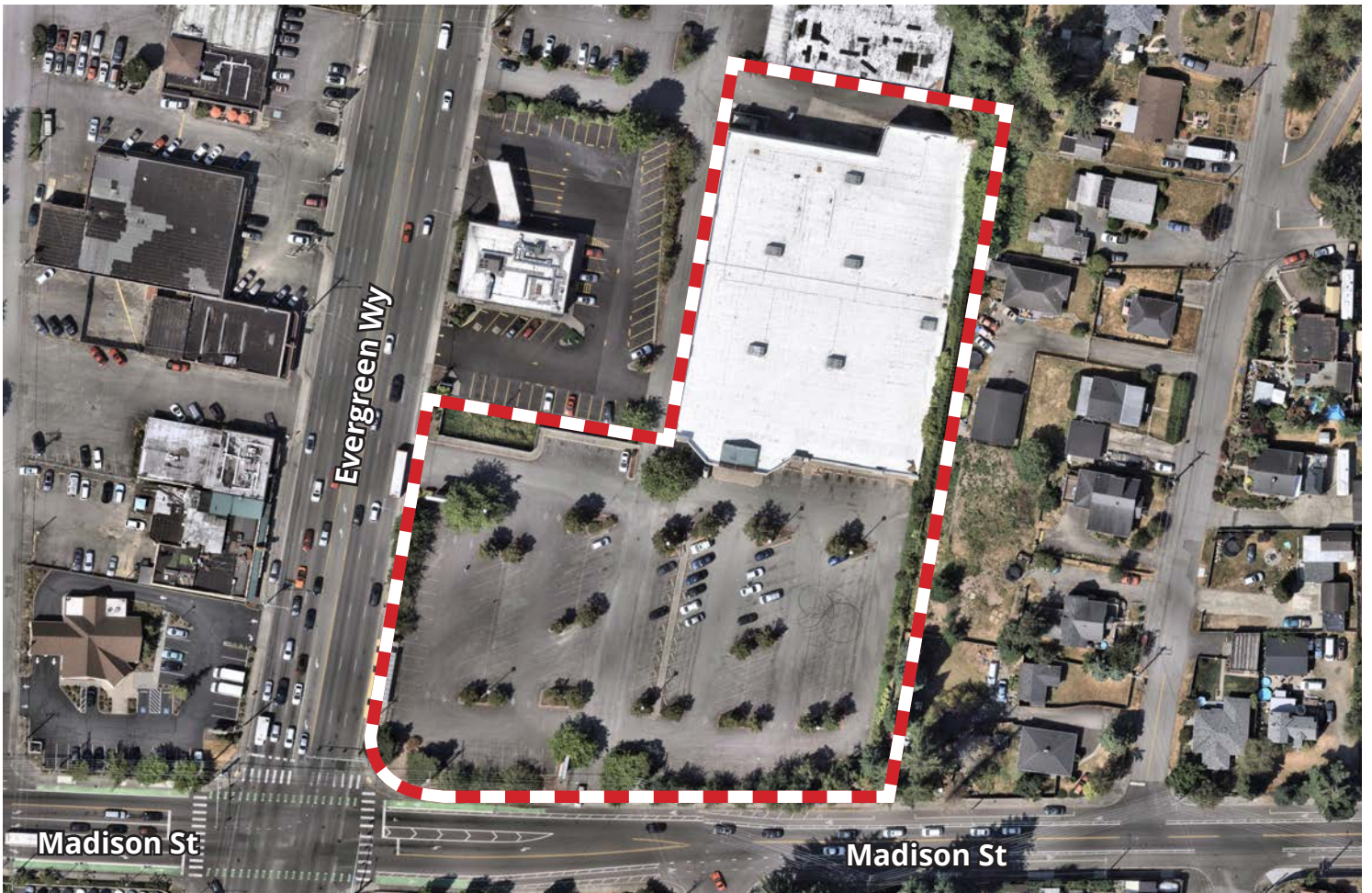
# 6727 Evergreen Way

Everett, WA 99203

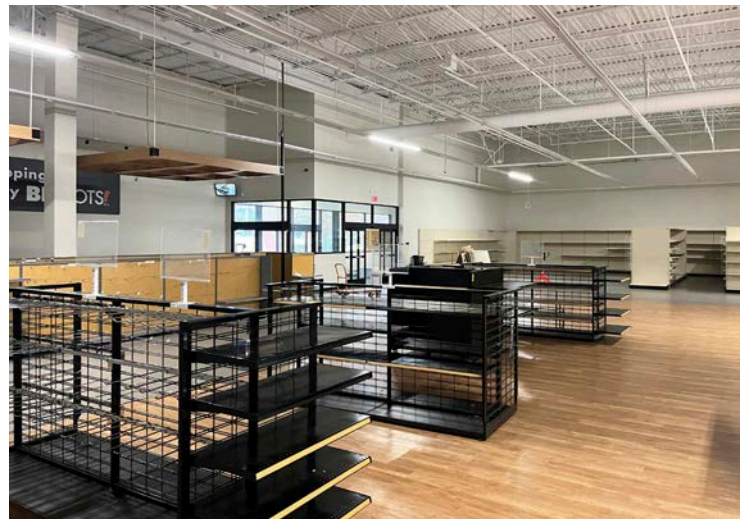
## Property Features

- 47,511 SF freestanding building on 3.71 acres
- Highly visible along Evergreen Way with prominent signage available
- Easy access to I-5 and SR-526
- Fully sprinklered and climate controlled space
- Recently updated roof and HVAC systems
- ±20' clear height
- Two dock-high loading doors in rear (north) side of building
- Generous on-site parking with ingress/egress to both Evergreen Way and Madison St
- Zoning: Mixed Urban, City of Everett
- Asking Rent: \$15.50/SF/Year, NNN
- Sale Price: Please inquire with listing brokers

For Lease / Sale



For Lease / Sale



For Lease / Sale



**Talor Okada**  
Executive Vice President  
+1 425 453 3127  
talor.okada@colliers.com

**Rich Sander**  
Associate Vice President  
+1 360 981 2543  
rich.sander@colliers.com

**Colliers International WA**  
11225 SE 6th St., Ste. 240  
Bellevue, WA 98004  
+1 425 453 4545

This document/email has been prepared by Colliers for advertising and general information only. Colliers makes no guarantees, representations or warranties of any kind, expressed or implied, regarding the information including, but not limited to, warranties of content, accuracy and reliability. Any interested party should undertake their own inquiries as to the accuracy of the information. Colliers excludes unequivocally all inferred or implied terms, conditions and warranties arising out of this document and excludes all liability for loss and damages arising there from. This publication is the copyrighted property of Colliers and/or its licensor(s). © 2026. All rights reserved. This communication is not intended to cause or induce breach of an existing listing agreement.