



FOR LEASE

LINCOLN PLAZA
2310 PASADENA AVENUE, LOS ANGELES

DAVID RAVANSHENAS

tel - 323-782-1205 | David@southparkgroup.com
DRE LICENSE #01869082

ERICK URIBE

tel - 323-216-2168 | Erick@southparkgroup.com
DRE LICENSE #02106084

LINCOLN PLAZA

2310 PASADENA AVENUE, LOS ANGELES



TWO STORY MALL WITH RETAIL AND OFFICE SPACES.

Property Overview



**Retail with
Creative Offices**

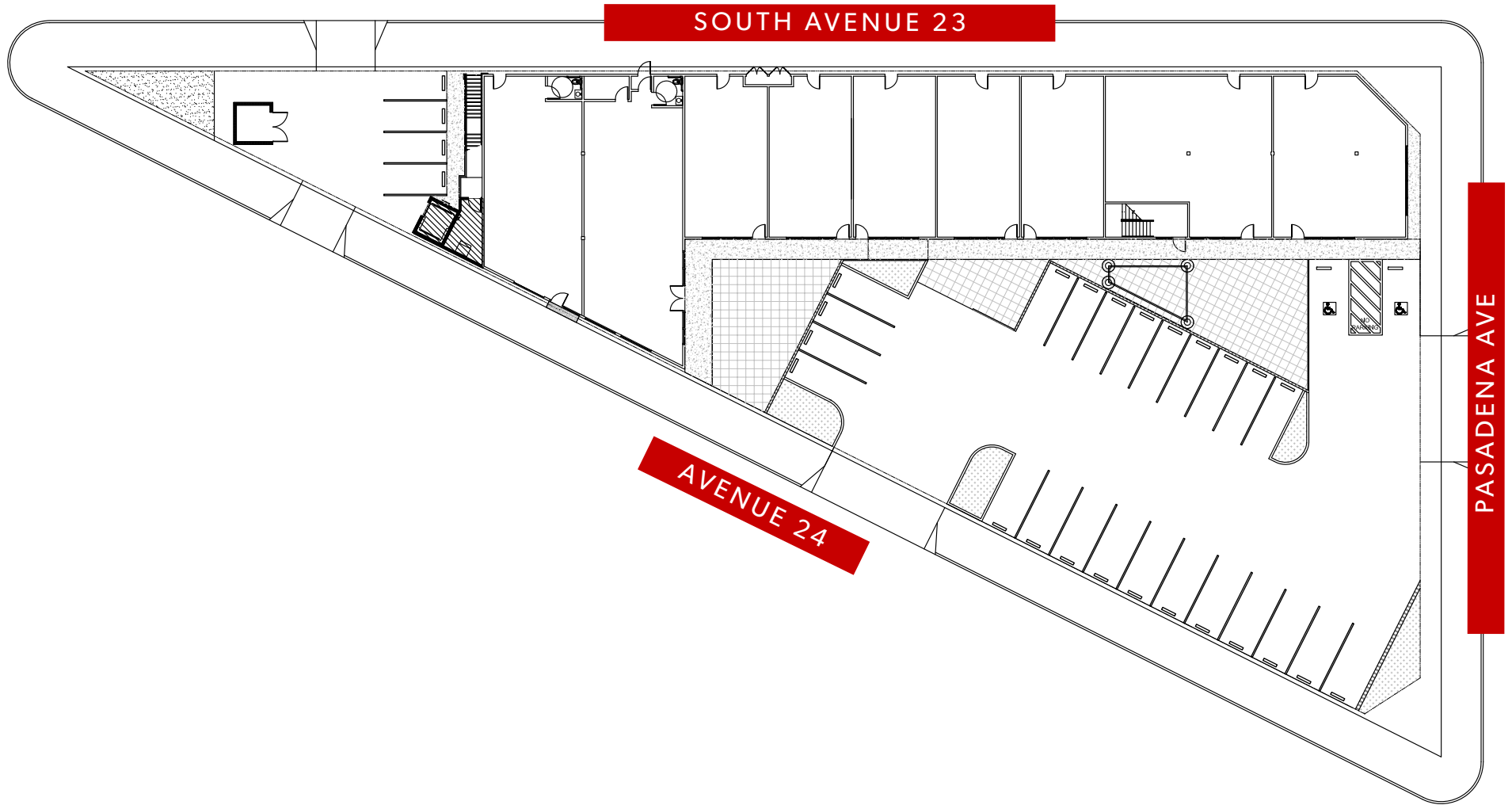
**Newly Remodelled
Retail Center**

Tastefully remodelled retail center with great parking and visibility. Second floor creative office with high ceilings, polished concrete floors and modern finishes.

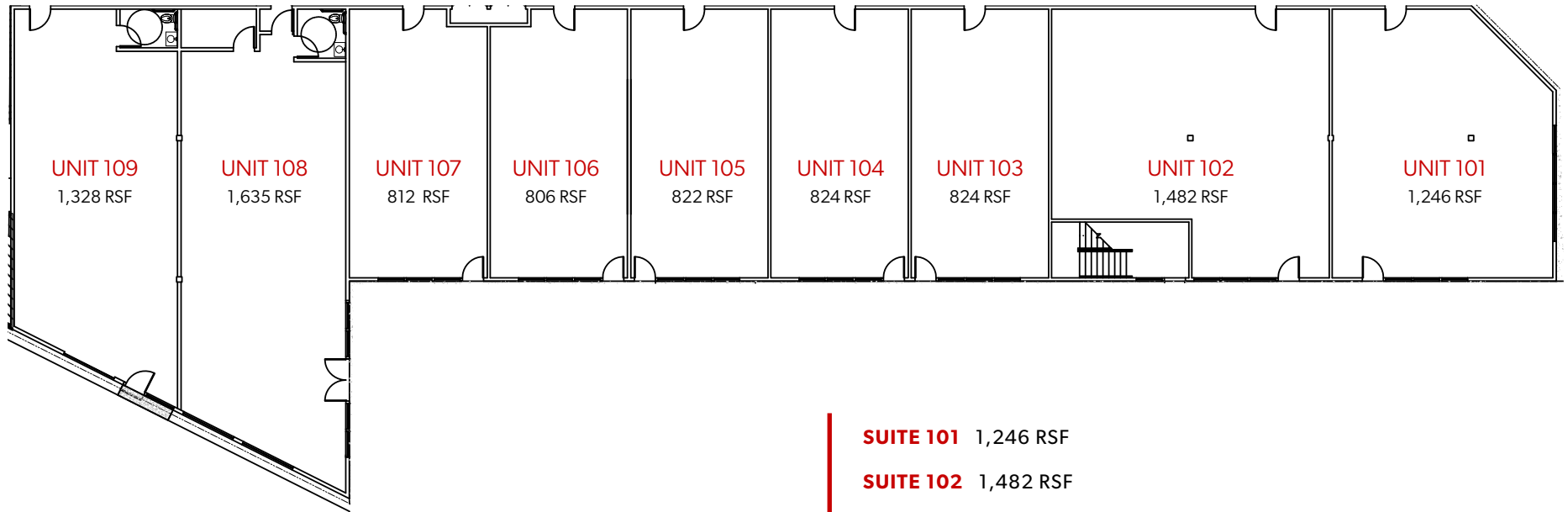
Newly Remodelled Retail Center



Site Plan



Floor Plan - Ground Floor - Retail Spaces



PARKING
AVAILABLE ON SITE

\$2.75 / SF MODIFIED GROSS

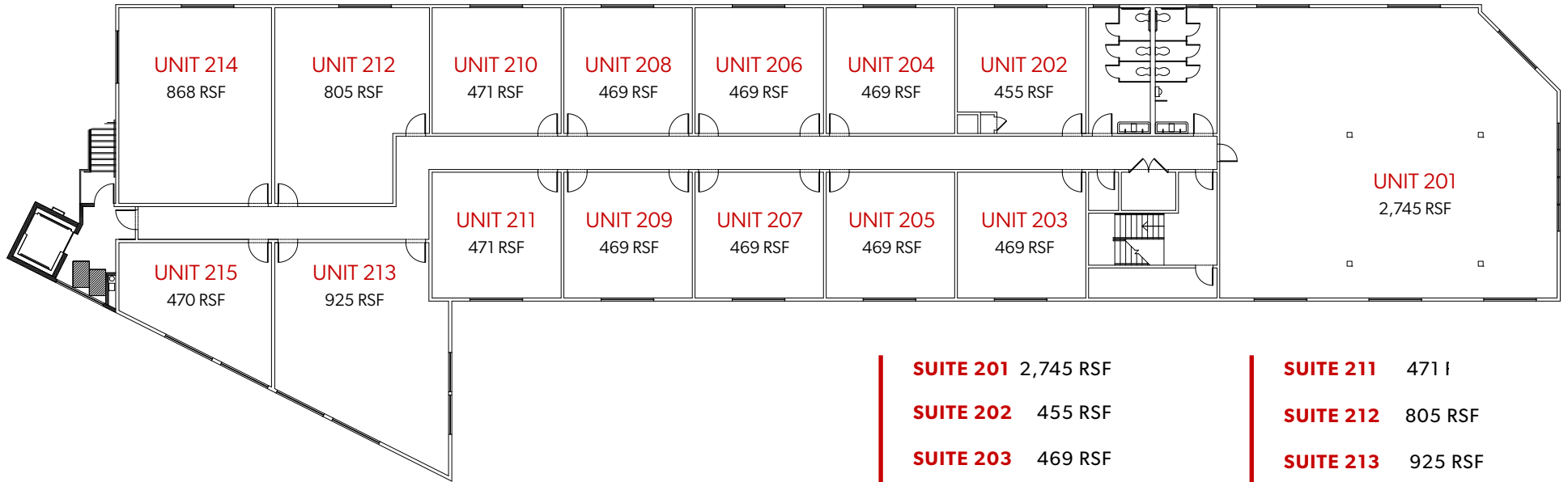
Ground Floor units
806 SF - 1,635 SF

- SUITE 101** 1,246 RSF
- SUITE 102** 1,482 RSF
- SUITE 103** 824 RSF
- SUITE 104** 824 RSF
- SUITE 105** 822 RSF
- SUITE 106** 806 RSF
- SUITE 107** 812 RSF
- SUITE 108** 1,635 RSF
- SUITE 109** 1,328 RSF

Creative Office



Floor Plan - Second Floor - Office Spaces



- SUITE 201** 2,745 RSF
- SUITE 202** 455 RSF
- SUITE 203** 469 RSF
- SUITE 204** 469 RSF
- SUITE 205** 469 RSF
- SUITE 206** 469 RSF
- SUITE 207** 469 RSF
- SUITE 208** 469 RSF
- SUITE 209** 469 RSF
- SUITE 210** 471 RSF

- SUITE 211** 471 RSF
- SUITE 212** 805 RSF
- SUITE 213** 925 RSF
- SUITE 214** 868 RSF
- SUITE 215** 470 RSF

PARKING
AVAILABLE ON SITE

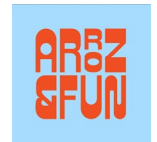
\$2.15 / SF MODIFIED GROSS

Second Floor units
455 SF - 2,745 SF

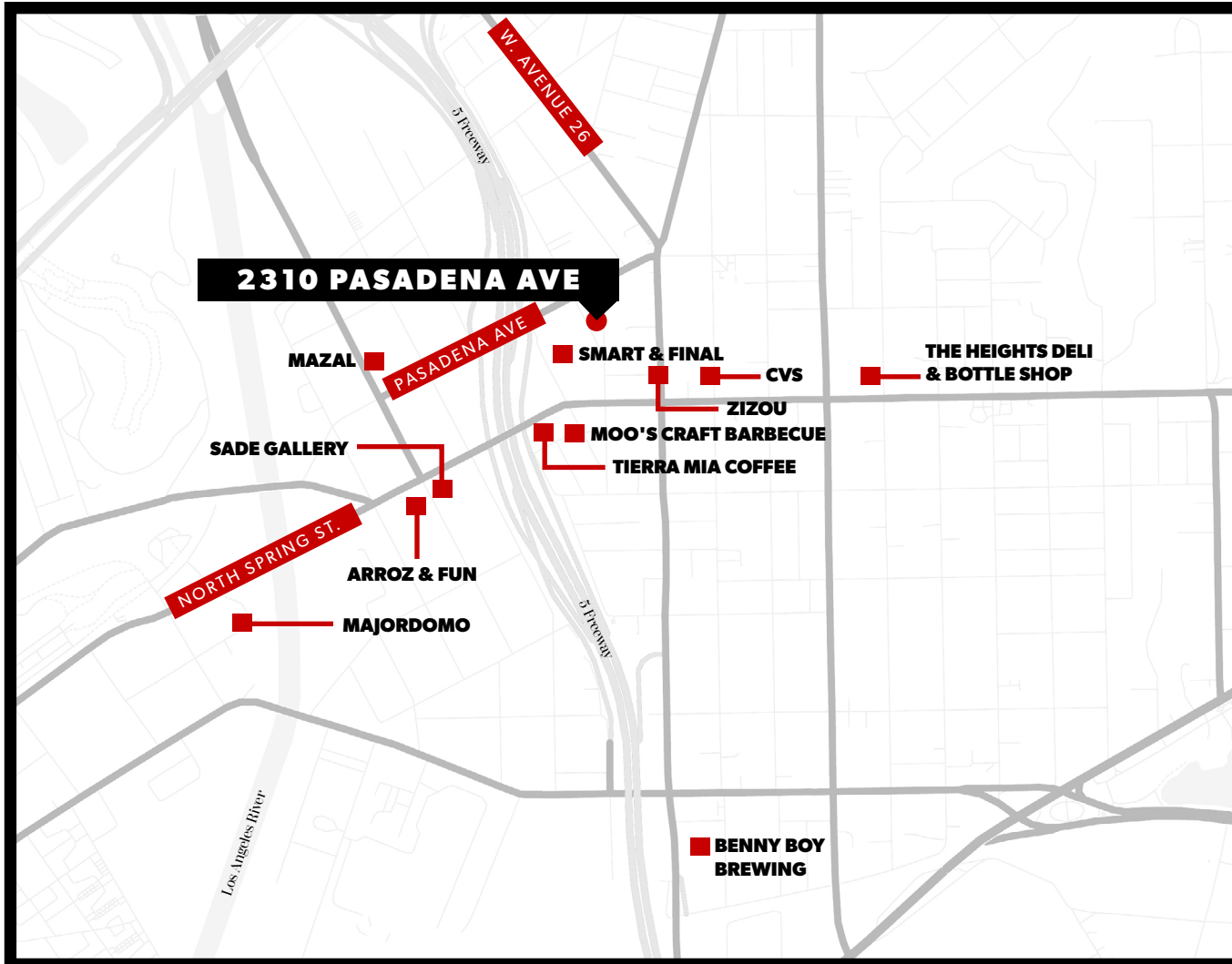
Area Overview : Current Neighborhood





Zizou
Restaurant





Map Overview: Tenants





























TENANTS

- MOO'S CRAFT BARBECUE
- TIERRA MIA COFFEE
- SMART & FINAL
- ARROZ & FUN
- SADE GALLERY
- CVS
- MAZAL
- THE HEIGHTS DELI & BOTTLE SHOP
- BENNY BOY BREWING
- MAJORDOMO
- ZIZOU

| *Contact*

DAVID RAVANSHENAS

TELEPHONE: (323) 782-1205

EMAIL: DAVID@SOUTHPARKGROUP.COM

ERICK URIBE

TELEPHONE: (323) 216-2168

EMAIL: ERICK@SOUTHPARKGROUP.COM

