

Welcome to JEFFERSON BOULEVARD



**11520 Jefferson Blvd
Culver City, CA 90230**



Property Overview

SF Lot: 8,651

SF Building: 13,158

Number of Floors: 2

Ground Floor Lease PSF: \$2.25 NNN

Zoning: Industrial General

APN: 4216-026-028

First Floor Property Details



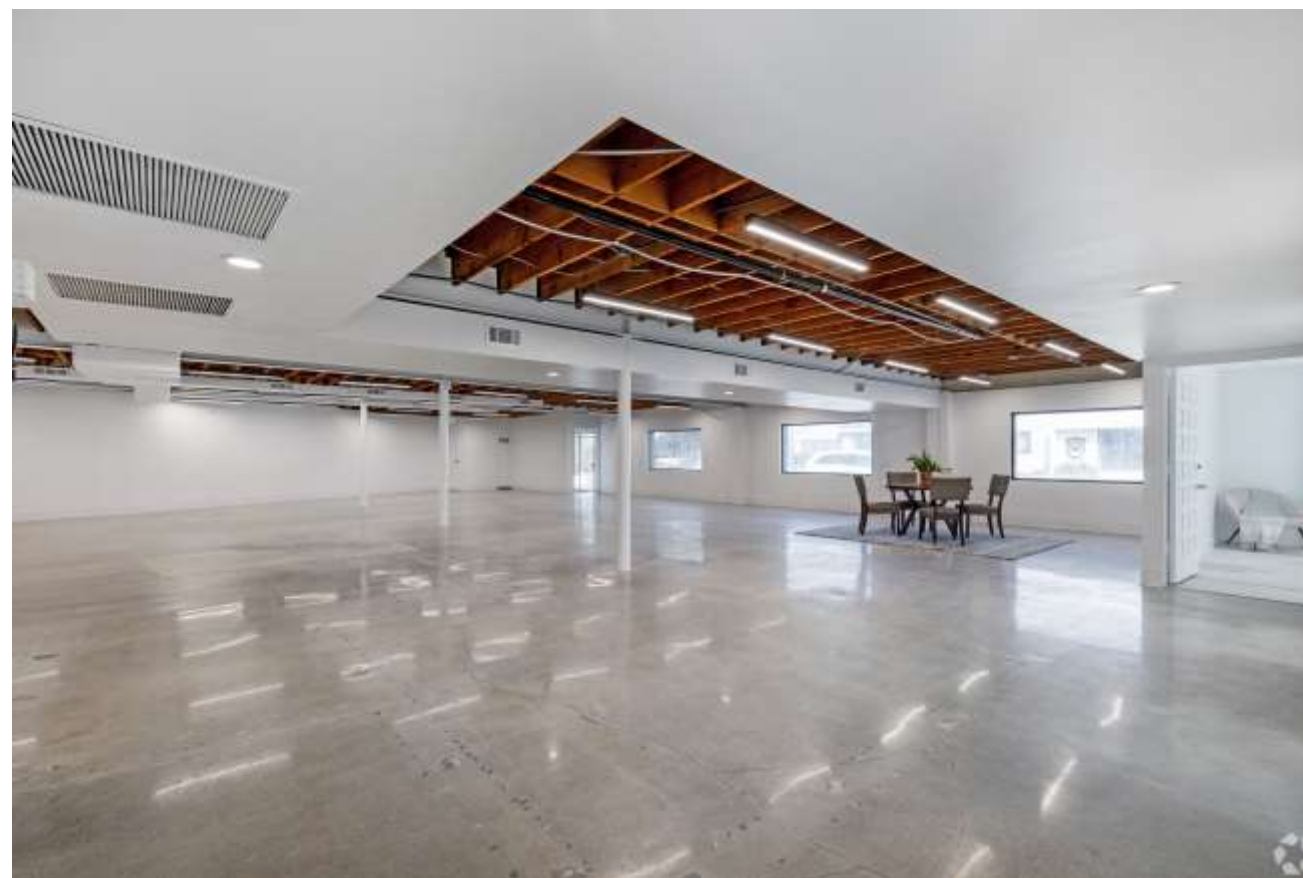
Beautiful Entrance & Lobby

6,675sq ft of Open Concept,
Industrial/Warehouse/ Retail

Space with
3 Private Offices

Brand New Kitchen, Restrooms
and HVAC

Garage Roll Up Door Leading to
The Gated Parking Lot
(Can accommodate
several vehicles)



Second Floor Property Details

Brand New Lobby, Kitchen and Restrooms

Unlimited Use of Our State-of-the- Conference Room

20 Offices ranging in size from 100 - 1600sq ft with the option to merge

Double Pane Perimeter Windows Offering Abundant Natural Light and Noise Cancelation



Building Amenities



- 24/7 Access
- Security System
- High Speed Fiber Internet Available
- Easy Access to the 405 and 90 Freeways
- Double Pane Windows with Noise Cancellation

For Leasing Inquires Contact:



Danielle Gerz

Silicon Beach Partners

DRE #02223577

213.364.0194

d.gerz@ownlallc.com