



The Terraces - 8660 College Pkwy.
Fort Myers, FL 33919

Cushman & Wakefield | Commercial Property Southwest Florida is pleased to present The Terraces Office Complex for lease. The property is located at the signalized corner of College Pkwy. and Winkler Rd. The Terraces Office Complex is an attractive and unique office building with an exceptional open air atrium with a fountain, waterfalls, and ponds. The excellent exposure and high traffic counts present a prime opportunity to grow your business!

Additional Highlights

- Monument and building signage facing College Pkwy
- Covered parking available
- Highly efficient floorplans
- Great visibility on College Pkwy.
- High profile south Fort Myers location
- Proximity to Cape Coral Pkwy. bridge to attract residents commuting to Fort Myers
- Well-maintained property

For more information:

Gary Tasman

Executive Vice President
+1 239 489 3600
gtasman@naiburnsscalo.com

Gretchen Smith

First Vice President
+1 239 464 5976
gsmith@naiburnsscalo.com

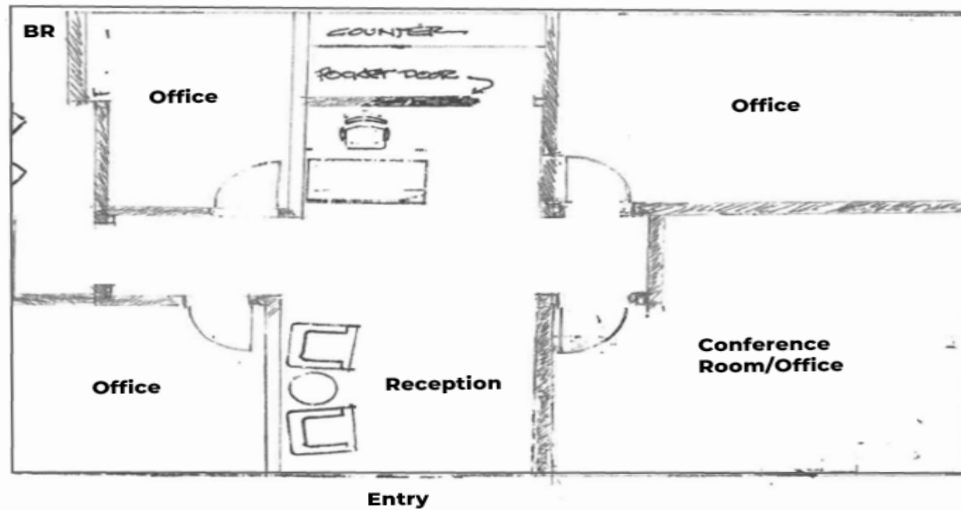
Property Highlights

Address	8660 College Pkwy Fort Myers, FL 33919
Year Built	1983
Total Bldg. SF	17,805 SF
Available SF	1,188 SF
Stories	3.54/1,000 SF (47 surface, 16 covered)
Lease Rate	\$16.00 SF / NNN
CAM (PSF)	\$10.33 PSF
Submarket	S Fort Myers / San Carlos
Zoning	CS-1
Signage	Pylon signage available

Lease Rate: \$16.00 / SF / NNN

CAM: \$10.33 / SF

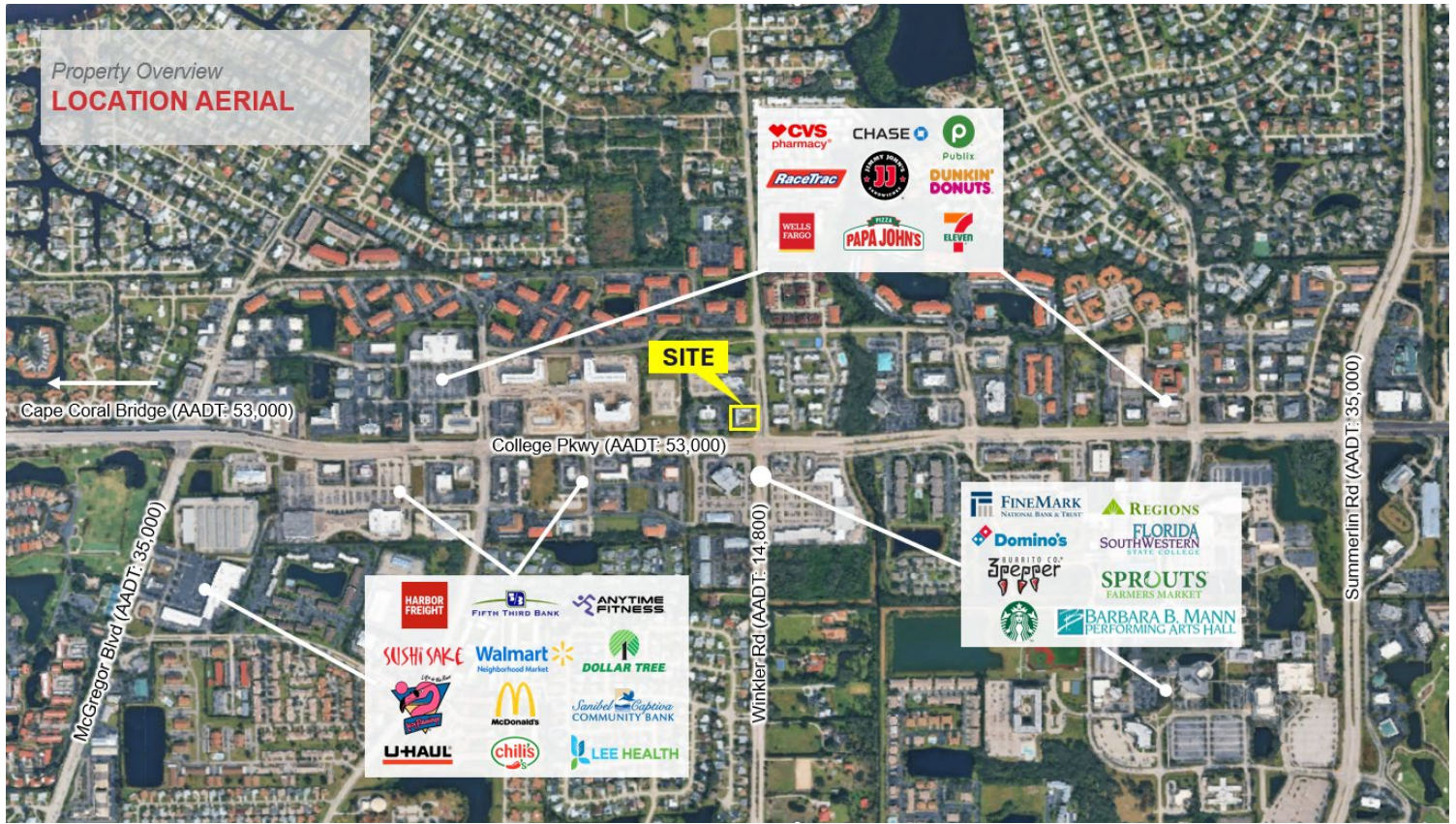
Unit	Size SF	Lease Rate	CAM (PSF)	Monthly Total	Available Date
Suite 150	1,188 SF	\$16.00 NNN	\$10.33	\$2,606.67	7/1/2026



NO WARRANTY OR REPRESENTATION, EXPRESS OR IMPLIED, IS MADE AS TO THE ACCURACY OF THE INFORMATION CONTAINED HEREIN, AND THE SAME IS SUBMITTED SUBJECT TO ERRORS, OMISSIONS, CHANGE OF PRICE, RENTAL OR OTHER CONDITIONS, PRIOR SALE, LEASE OR FINANCING, OR WITHDRAWAL WITHOUT NOTICE, AND OF ANY SPECIAL LISTING CONDITIONS IMPOSED BY OUR PRINCIPALS NO WARRANTIES OR REPRESENTATIONS ARE MADE AS TO THE CONDITION OF THE PROPERTY OR ANY HAZARDS CONTAINED THEREIN ARE ANY TO BE IMPLIED.

5220 Summerlin Commons Blvd Suite 500
 Fort Myers, FL 33907
 +1 239 489 3600
naiburnsscalo.com

Aerial / Location Map



Demographics

	2-Miles	3-Miles	10-Miles
Population	37,097	166,915	496,473
AVG. HH Income	\$72,462	\$80,961	\$84,109
Annual Growth 2024-2029	3.5%	3.7%	3.8%

Traffic Counts

College Pkwy.	53,000 AADT
McGregor Blvd.	35,000 AADT
Summerlin Rd.	35,000 AADT



For more information:

Gary Tasman

Executive Vice President

+1 239 489 3600

gtasman@naiburnsscalo.com

Gretchen Smith

First Vice President

+1 239 464 5976

gsmith@naiburnsscalo.com